

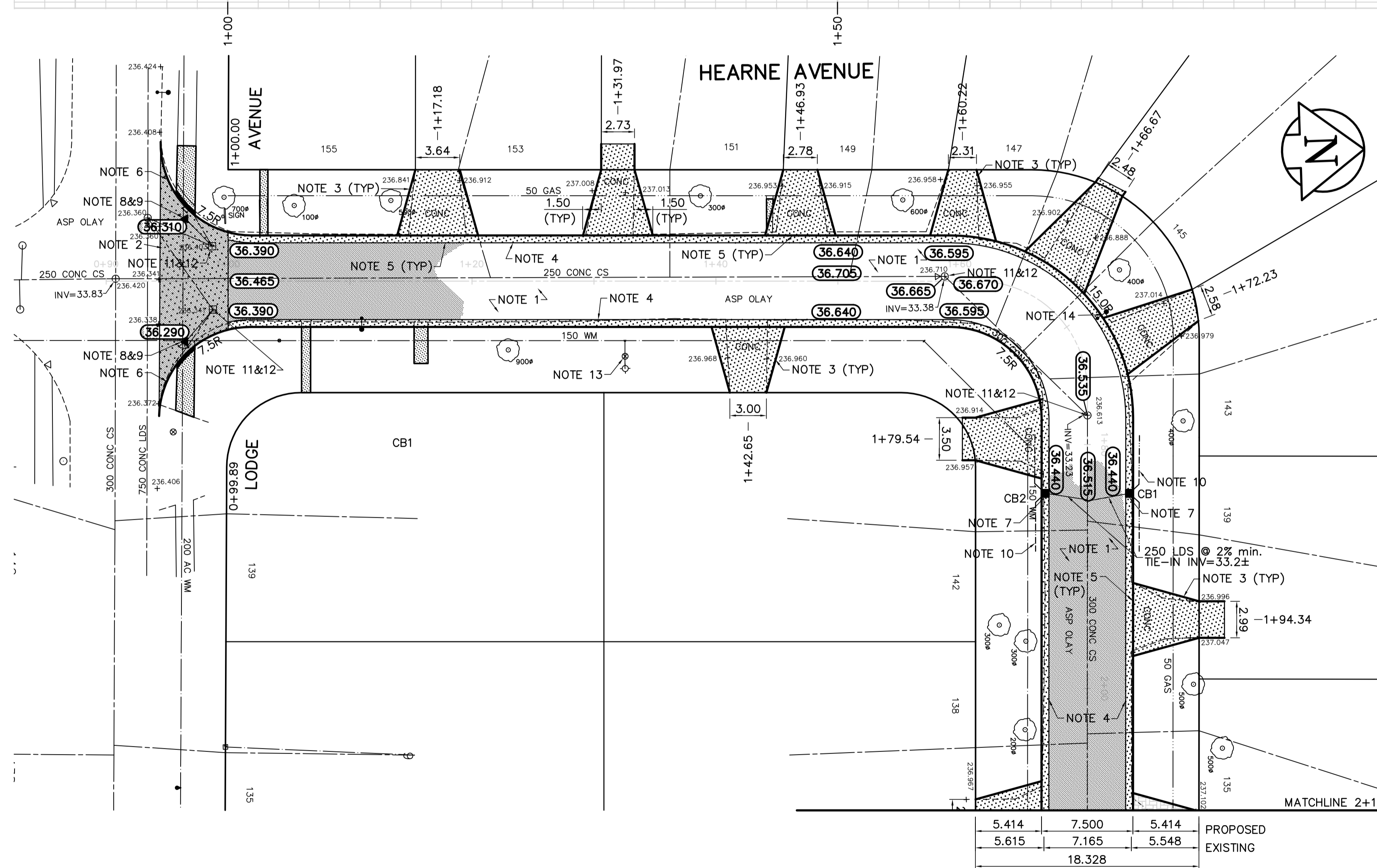
DESCRIPTION	RIM	INVERT			
		NORTH	SOUTH	EAST	WEST
CB 1	36.440		34.840		
CB 2	36.440	34.840			

REFERENCE NOTES

- A. PAVEMENT DIMENSIONS ARE TO BACK OF CURB
- B. ADD 200.000 TO DESIGN ELEVATIONS OBTAIN GEODETIC DATUM
- C. BASELINE IS CENTRE LINE RIGHT-OF-WAY
- D. PROPERTY LINES OBTAINED FROM CITY OF WINNIPEG L.B.I.S., AND NO SCALE FACTOR WAS APPLIED

CONSTRUCTION NOTES

1. REMOVE EXISTING PAVEMENT AND CONSTRUCT NEW 100mm ASPHALTIC PAVEMENT (TYPE 1A)
2. REMOVE EXISTING PAVEMENT AND CONSTRUCT NEW 150mm REINFORCED CONCRETE PAVEMENT c/w 50mm ASPHALT OVERLAY (TYPE 1A)
3. REMOVE EXISTING CONCRETE AND CONSTRUCT NEW 150mm REINFORCED CONCRETE PAVEMENT
4. CONSTRUCT NEW BARRIER CURB AND GUTTER (180mm HT)
5. CONSTRUCT NEW LIP CURB AND GUTTER (40mm HT)
6. CONSTRUCT NEW MODIFIED BARRIER CURB (180mm HT INTEGRAL)
7. INSTALL NEW CURB AND GUTTER INLET c/w CATCH BASIN (SD-024) AND CONNECT NEW 250mm LEAD TO EXISTING 300mm COMBINED SEWER
8. INSTALL NEW CATCHBASIN FRAME AND GRATED COVER c/w CATCH PIT (SD-023) AND CONNECT NEW 250mm LEAD TO EXISTING CATCH BASIN
9. REMOVE EXISTING CATCH PIT
10. INSTALL 150mm SUBDRAIN
11. ADJUST EXISTING MANHOLE/CATCHBASIN TO GRADE
12. INSTALL NEW CAST IRON RISER RING
13. ADJUST EXISTING WATER VALVE TO GRADE
14. RELOCATE EXISTING LIGHT STANDARD (BY OTHERS)



APEGM
Certificate of Authorization
Earth Tech Canada Inc.
No. 730 Expiry: April 30, 2007

EXISTING	LEGEND - PLAN	PROPOSED	EXISTING	LEGEND - PLAN	PROPOSED	EXISTING	LEGEND - PROFILE	PROPOSED
150 mm W.M.	WATERMAIN	150 mm W.M.	HYDRO	HYDRO	32.750	32.750	PROFILE	PROFILE
Hydrant	HYDRANT	Valve	M.T.S.	M.T.S.			NORTH/WEST GUTTER	
Valve	VALVE	Manhole	CONCRETE	CONCRETE			SOUTH/EAST GUTTER	
Land Drainage Sewer	LAND DRAINAGE SEWER	Catch Basin	ASPHALT	ASPHALT			N/W PROPERTY LINE	
Wastewater Sewer	WASTEWATER SEWER	Curb Inlet	PROPERTY LINE	PROPERTY LINE			S/E PROPERTY LINE	
Manhole	MANHOLE	Junctions	SURVEY BAR	SURVEY BAR				
Catch Basin	CATCH BASIN	Test Hole (07-R-03)	ELEVATION	ELEVATION				
Curb Inlet	CURB INLET	Gas	TREE	TREE				
Junctions	JUNCTIONS		SIDEWALK RAMP	SIDEWALK RAMP				
Test Hole (07-R-03)	TEST HOLE (07-R-03)		CONCRETE SIDEWALK	CONCRETE SIDEWALK				
Gas	GAS		FENCE	FENCE				

LOCATION APPROVED UNDERGROUND STRUCTURES

SUPV. U/G STRUCTURES DATE COMMITTEE

NOTE:

LOCATION OF UNDERGROUND STRUCTURES AS SHOWN ARE BASED ON THE BEST INFORMATION AVAILABLE, BUT NO GUARANTEE IS GIVEN THAT ALL EXISTING UTILITIES ARE SHOWN OR THAT THE GIVEN LOCATIONS ARE EXACT. CONFIRMATION OF EXISTENCE AND EXACT LOCATION OF ALL SERVICES MUST BE OBTAINED FROM THE INDIVIDUAL UTILITIES BEFORE PROCEEDING WITH CONSTRUCTION.

B.M. 39-061 N.E. Cor. Mount Royal Rd. and Bruce Ave., Tbl. on Top of 0.05m dia. x 2.4m Iron pipe, 4.5m W. of E.L. ELEV. 236.446
Top of 0.05m dia. x 2.4m Iron pipe, 4.5m W. of E.L. ELEV. 236.446

NO.	REVISIONS	DATE	BY
0	ISSUED FOR TENDER	07/03/14	BC
A	ISSUED FOR REVIEW	02/21/07	BC

EarthTech
A Tyco International Ltd. Company

DESIGNED BY	RC	CHECKED BY	BC
DRAWN BY	RC	APPROVED BY	
HOR. SCALE:	1:250	RELEASED FOR CONSTRUCTION BY:	
VERTICAL:	1:10	DATE	2007/02/16

ENGINEER'S SEAL
PROVINCE OF MANITOBA
ORIGINAL SIGNED
T.G. SMITH
MAR 14, 2007
REGISTERED PROFESSIONAL ENGINEER

THE CITY OF WINNIPEG
PUBLIC WORKS DEPARTMENT
ENGINEERING DIVISION

HEARNE AVENUE
LODGE AVENUE TO MOUNT ROYAL ROAD

PAVEMENT RECONSTRUCTION
PLAN/PROFILE
LODGE AVENUE TO STATION 2+10

CITY DRAWING NUMBER
SHEET 1 OF 2