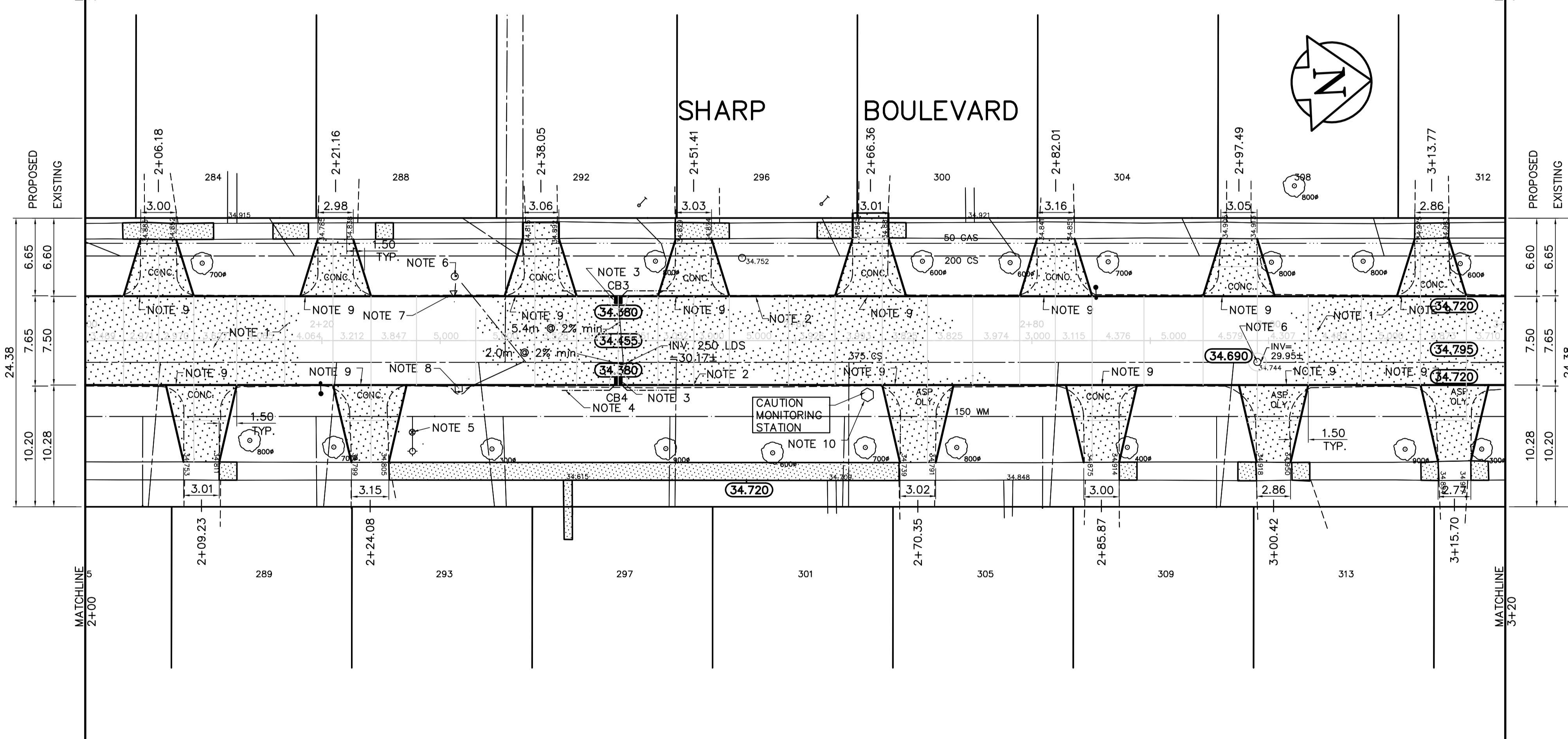


**PAVEMENT RECONSTRUCTION SECTION**  
NTS

DESCRIPTION	RIM	INVERT			
		NORTH	SOUTH	EAST	WEST
CB 3	34.380			32.780	
CB 4	34.380				32.780



- REFERENCE NOTES**
- PAVEMENT DIMENSIONS ARE TO BACK OF CURB
  - ADD 200.000 TO OBTAIN GEODETIC DATUM
  - BASELINE IS CENTRE LINE NEW PAVEMENT
  - PROPERTY LINES OBTAINED FROM CITY OF WINNIPEG L.B.I.S., AND NO SCALE FACTOR WAS APPLIED
  - EARTH TECH FIELD BOOK NO. 4527

- CONSTRUCTION NOTES**
- REMOVE EXISTING PAVEMENT AND CONSTRUCT 150mm REINFORCED CONCRETE PAVEMENT
  - CONSTRUCT NEW CONCRETE BARRIER CURB (SEPARATE)
  - INSTALL NEW CURB AND GUTTER INLET c/w 1800mm CATCH BASIN (SD024) AND CONNECT NEW 250mm LEAD TO EXISTING COMBINED SEWER
  - INSTALL 150mm SUBDRAIN
  - ADJUST EXISTING WATER VALVE TO GRADE
  - ADJUST EXISTING MANHOLE/CATCH BASIN TO GRADE
  - ABANDON EXISTING DRAINAGE INLET
  - REMOVE EXISTING CATCH BASIN
  - CONSTRUCT NEW CONCRETE LIP CURB (40mm HT, INTEGRAL)
  - ADJUST EXISTING CATHODIC PROTECTION MONITORING STATION BOX



150 mm W.M.	WATERMAIN	150 mm W.M.	HYDRO	M.T.S.	CONCRETE	ASPHALT	PROPERTY LINE	SURVEY BAR	ELEVATION	TREE	SIDEWALK RAMP	CONCRETE SIDEWALK	FENCE
○	HYDRANT	+	—	—	—	—	—	—	(32.750)	—	—	—	—
○	VALVE	+	—	—	—	—	—	—	—	—	—	—	—
○	LAND DRAINAGE SEWER	300mm L.D.S.	—	—	—	—	—	—	—	—	—	—	—
○	WASTEWATER SEWER	250mm W.W.S.	—	—	—	—	—	—	—	—	—	—	—
○	MANHOLE	—	—	—	—	—	—	—	—	—	—	—	—
○	CATCH BASIN	—	—	—	—	—	—	—	—	—	—	—	—
○	CURB INLET	—	—	—	—	—	—	—	—	—	—	—	—
○	JUNCTIONS	—	—	—	—	—	—	—	—	—	—	—	—
○	TEST HOLE (07-R-03)	—	—	—	—	—	—	—	—	—	—	—	—
○	GAS	—	—	—	—	—	—	—	—	—	—	—	—

**LOCATION APPROVED UNDERGROUND STRUCTURES**

SUPV. U/G STRUCTURES DATE COMMITTEE

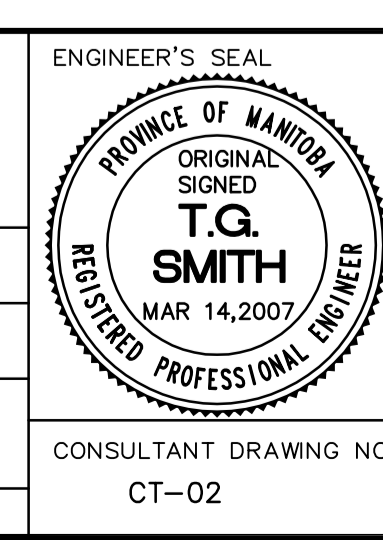
**NOTE:**  
LOCATION OF UNDERGROUND STRUCTURES AS SHOWN ARE BASED ON THE BEST INFORMATION AVAILABLE. BUT NO GUARANTEE IS GIVEN THAT ALL EXISTING UTILITIES ARE SHOWN OR THAT THE GIVEN LOCATIONS ARE EXACT. CONFIRMATION OF EXISTENCE AND EXACT LOCATION OF ALL SERVICES MUST BE OBTAINED FROM THE INDIVIDUAL UTILITIES BEFORE PROCEEDING WITH CONSTRUCTION.

B.M. 39-061 N.E. Cor. Mount Royal Rd. and Bruce Ave., Tpt. on top of 0.05m dia. x 2.4m iron pipe, 6.5m W. of E.L. ELEV. 236.446

NO.	REVISIONS	DATE	BY
0	ISSUED FOR TENDER	07/03/14	BC
A	ISSUED FOR REVIEW	02/21/07	BC

**EarthTech**  
A Tyco International Ltd. Company

DESIGNED BY	RC	CHECKED BY	BC/TGS
DRAWN BY	RC	APPROVED BY	
HOR. SCALE:	1:250	RELEASED FOR CONSTRUCTION BY:	
VERTICAL:	1:10		
DATE	2007/02/16	DATE	



**THE CITY OF WINNIPEG**  
PUBLIC WORKS DEPARTMENT  
ENGINEERING DIVISION

**SHARP BOULEVARD**  
LODGE AVENUE TO BRUCE AVENUE

PAVEMENT RECONSTRUCTION  
PLAN/PROFILE  
STATION 2+00 TO STATION 3+20

CITY DRAWING NUMBER  
SHEET 2 OF 3

CONSULTANT DRAWING NO.  
CT-02