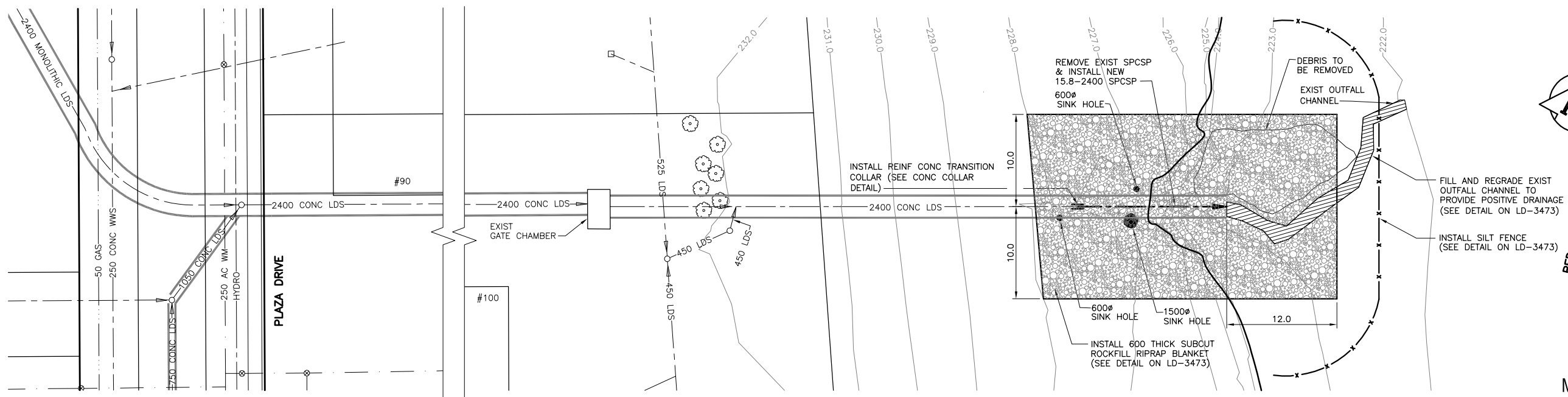
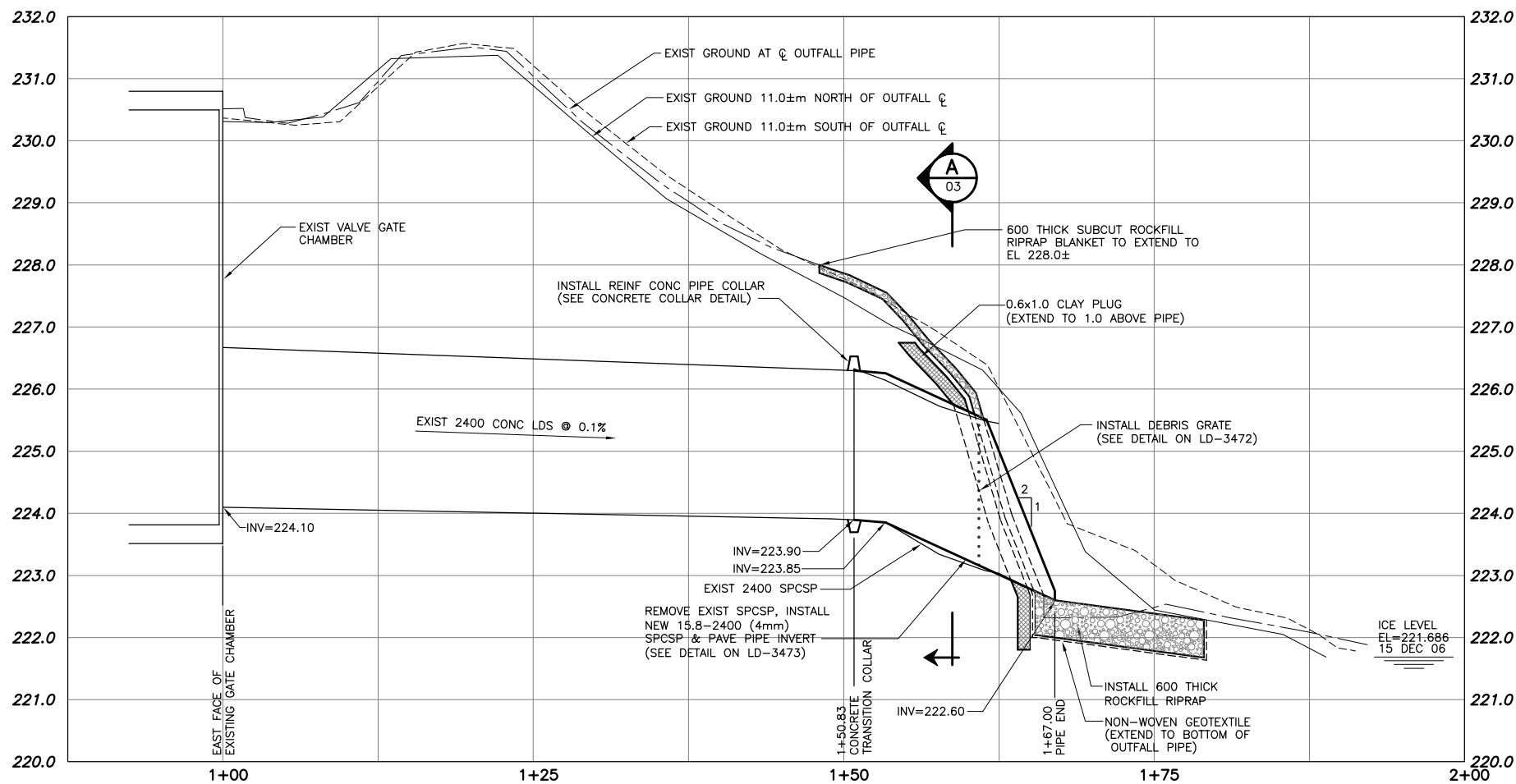
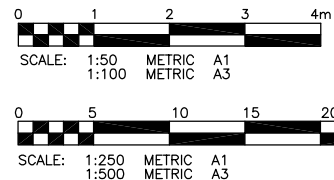


CONCRETE COLLAR DETAIL
SCALE: 1:25



WARNING
IF POWER EQUIPMENT OR EXPLOSIVES ARE TO BE USED FOR EXCAVATION ON THIS PROJECT THE CONTRACTOR MUST:
1) NOTIFY THE GAS COMPANY OF THE PROPOSED LOCATION OF EXCAVATION.
2) TAKE PRECAUTION TO AVOID DAMAGE TO GAS COMPANY INSTALLATIONS.
SEE PROVINCIAL REGULATION 210/72 FOR DETAILS.



METRIC
WHOLE NUMBERS INDICATE MILLIMETRES
DECIMALIZED NUMBERS INDICATE METRES

APEGM
Certificate of Authorization
KGS Group
No. 245 Expiry: April 30, 2007

2006\06-0107-23\MUN\DWGS\PLAZA OUTFALL (RR-22)\PLOT.DWG

150 WM	WATERMAIN	150 WM	HYDRO			
HYDRANT	HYDRANT	M.T.S.				
VALVE	VALVE	PROPERTY LINE				
300 LDS	LAND DRAINAGE SEWER	300 LDS	SURVEY BAR			
250 WWS	WASTE WATER SEWER	250 WWS	LIGHT STANDARD			
MANHOLE	MANHOLE	HYDRO POLE				
CATCH BASIN	CATCH BASIN	GUY WIRE				
CURB INLET	CURB INLET	SIGN				
JUNCTIONS	JUNCTIONS	BUSH LINE				
CULVERT	CULVERT	FENCE				
GAS	GAS	ELEVATION	231.334	32.231		
EXISTING	LEGEND-PLAN	PROPOSED	EXISTING	LEGEND-PLAN	PROPOSED	EXISTING

LOCATION APPROVED UNDERGROUND STRUCTURES

SUPV. U/G STRUCTURES COMMITTEE DATE

NOTE:
LOCATION OF UNDERGROUND STRUCTURES AS SHOWN ARE BASED ON THE BEST INFORMATION AVAILABLE BUT NO GUARANTEE IS GIVEN THAT ALL EXISTING UTILITIES ARE SHOWN OR THAT THE GIVEN LOCATIONS ARE EXACT. CONFIRMATION OF EXISTENCE AND EXACT LOCATION OF ALL SERVICES MUST BE OBTAINED FROM THE INDIVIDUAL UTILITIES BEFORE PROCEEDING WITH CONSTRUCTION.

B.M. XX-XXX	ELEV. XXX.XXX
ISSUED FOR CONSTRUCTION	12/01/07 RJH
NO. REVISIONS	DATE BY

KGS GROUP CONSULTING ENGINEERS & PROJECT MANAGERS
WINNIPEG (204) 896-1209
THUNDER BAY (807) 345-2233

DESIGNED BY RO CHECKED BY RJH
DRAWN BY DW APPROVED BY

HOR. SCALE: 1:250
VERTICAL: 1:50

RELEASED FOR CONSTRUCTION: DATE

ENGINEER'S SEAL
PROVINCE OF MANITOBA
R.J. HOUSTON
Member
4385
REGISTERED PROFESSIONAL ENGINEER

THE CITY OF WINNIPEG
WATER & WASTE DEPARTMENT

PLAZA DRIVE OUTFALL RENEWAL
OUTFALL (RR-22)
PLAN & PROFILE

SHEET 01 OF 03
CAD FILE DRAWING NUMBER 06-0107-23
CITY DRAWING NUMBER LD-3471

CONSULTANT DRAWING NO. 06-0107-23