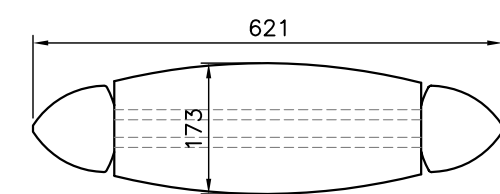
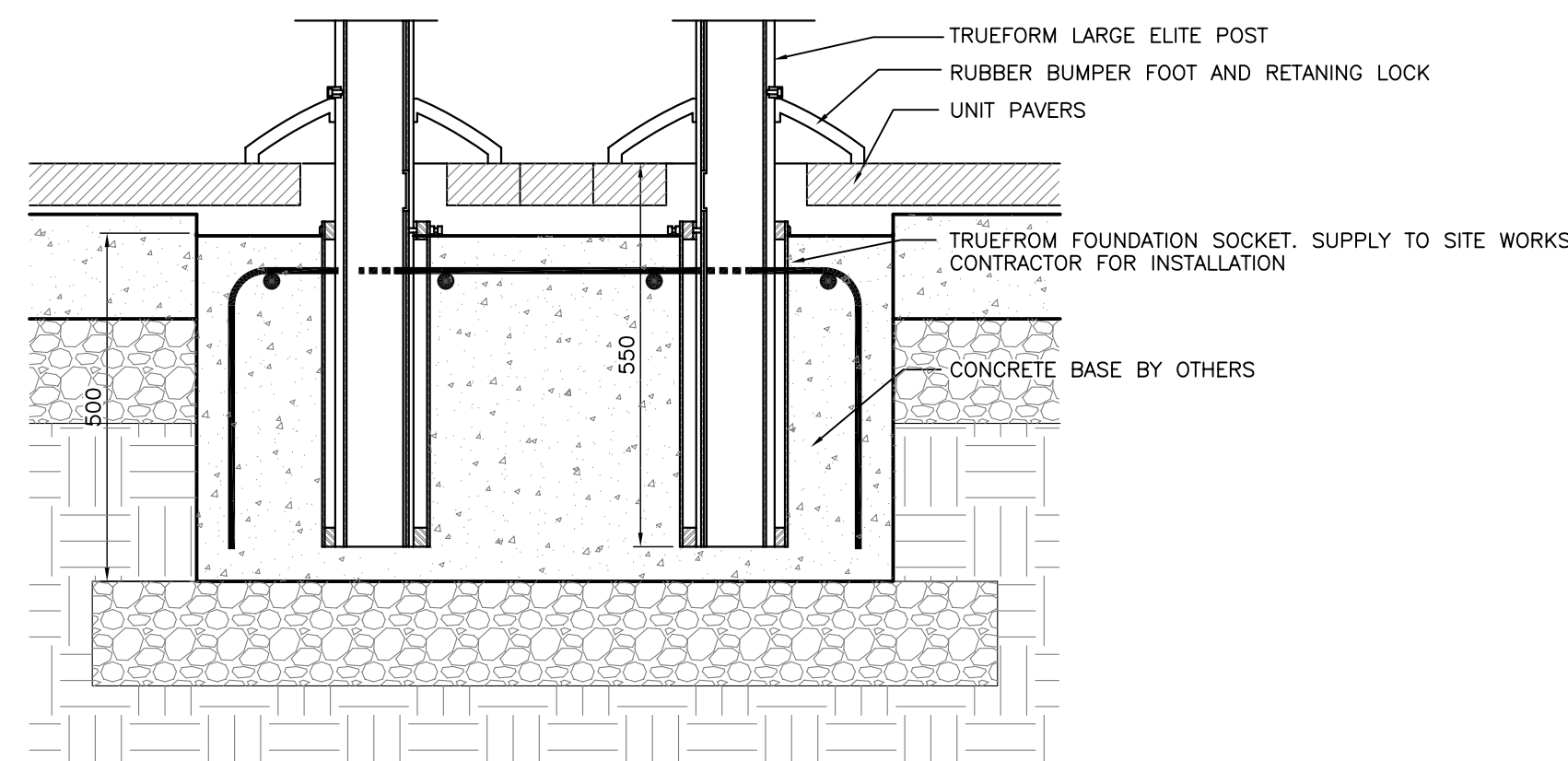


FRONT ELEVATION

SIDE ELEVATION



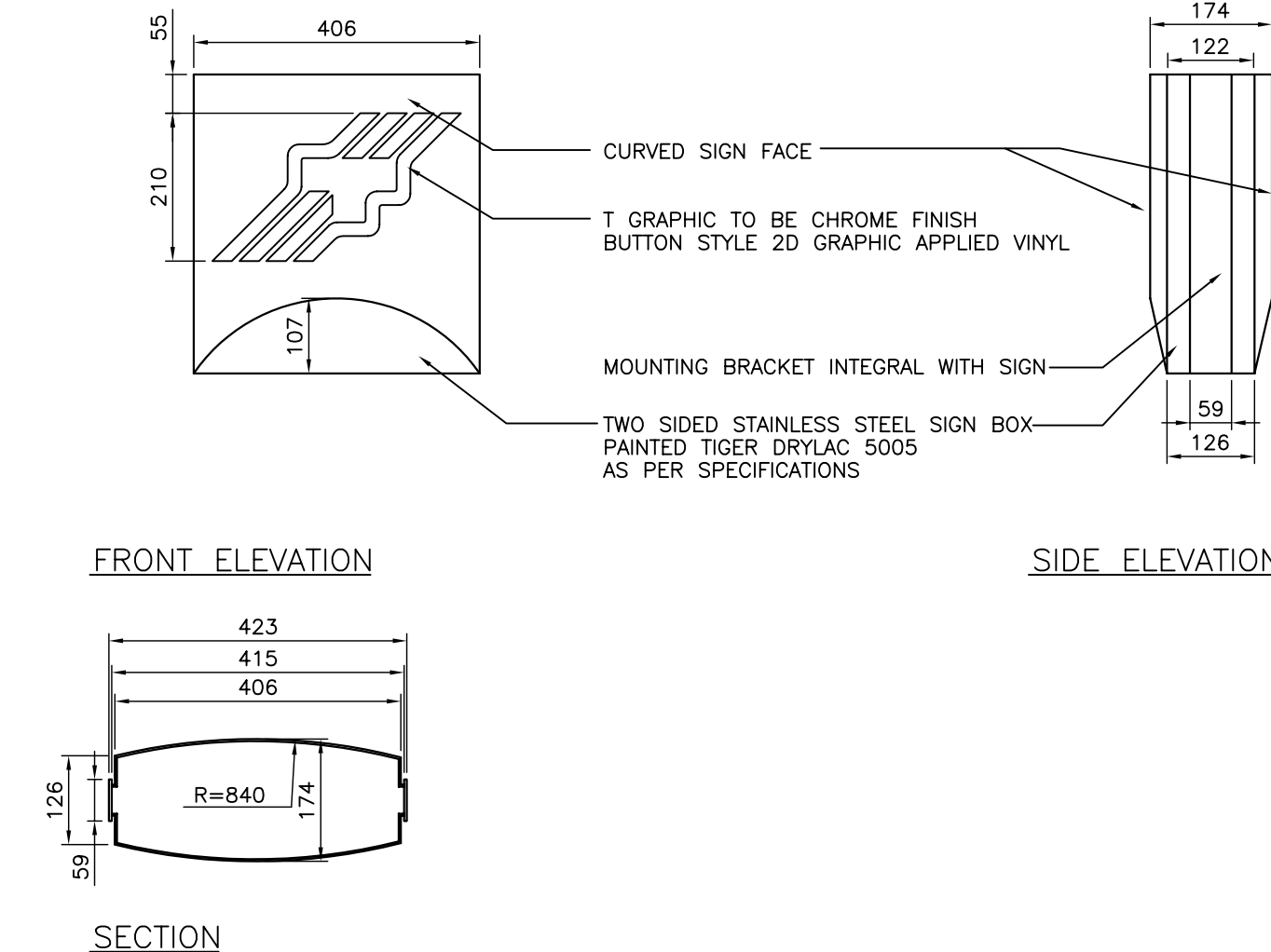
PLAN



SECTION

POSTS, SLEEVES, CONCRETE BASES, AND BUMPER FOOT MANUFACTURED AND INSTALLED AS PER TRUEFORM ENGINEERING, DETAILS AND SPECIFICATIONS MODIFIED AS REQUIRED TO SUITE MANITOBA CONDITIONS FOR TEMPERATURE EXTREMES, SALT, WIND LOADING AND SNOW CLEARING.

DETAIL 11 - BASE CONNECTION

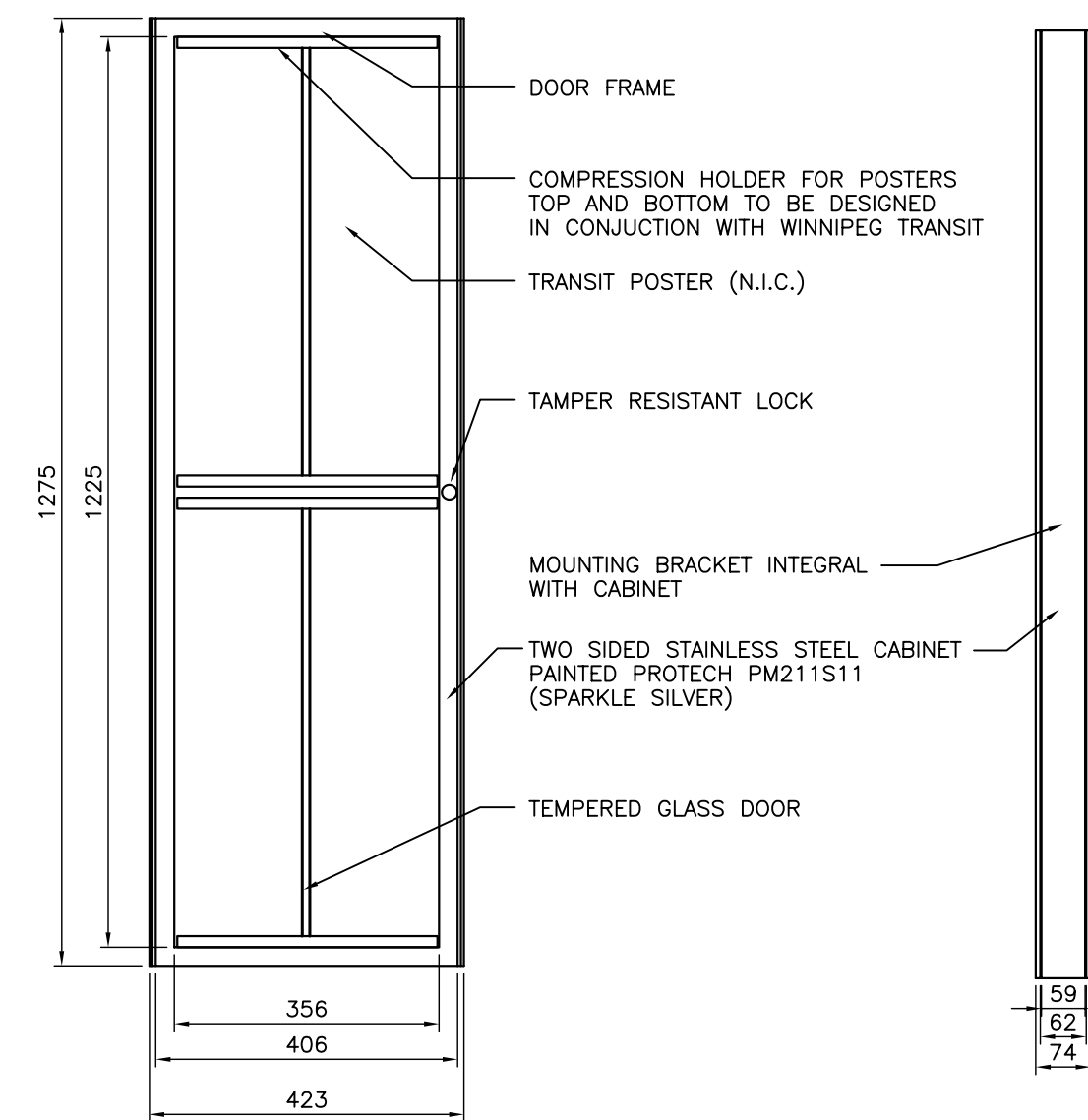


FRONT ELEVATION

SIDE ELEVATION

SECTION

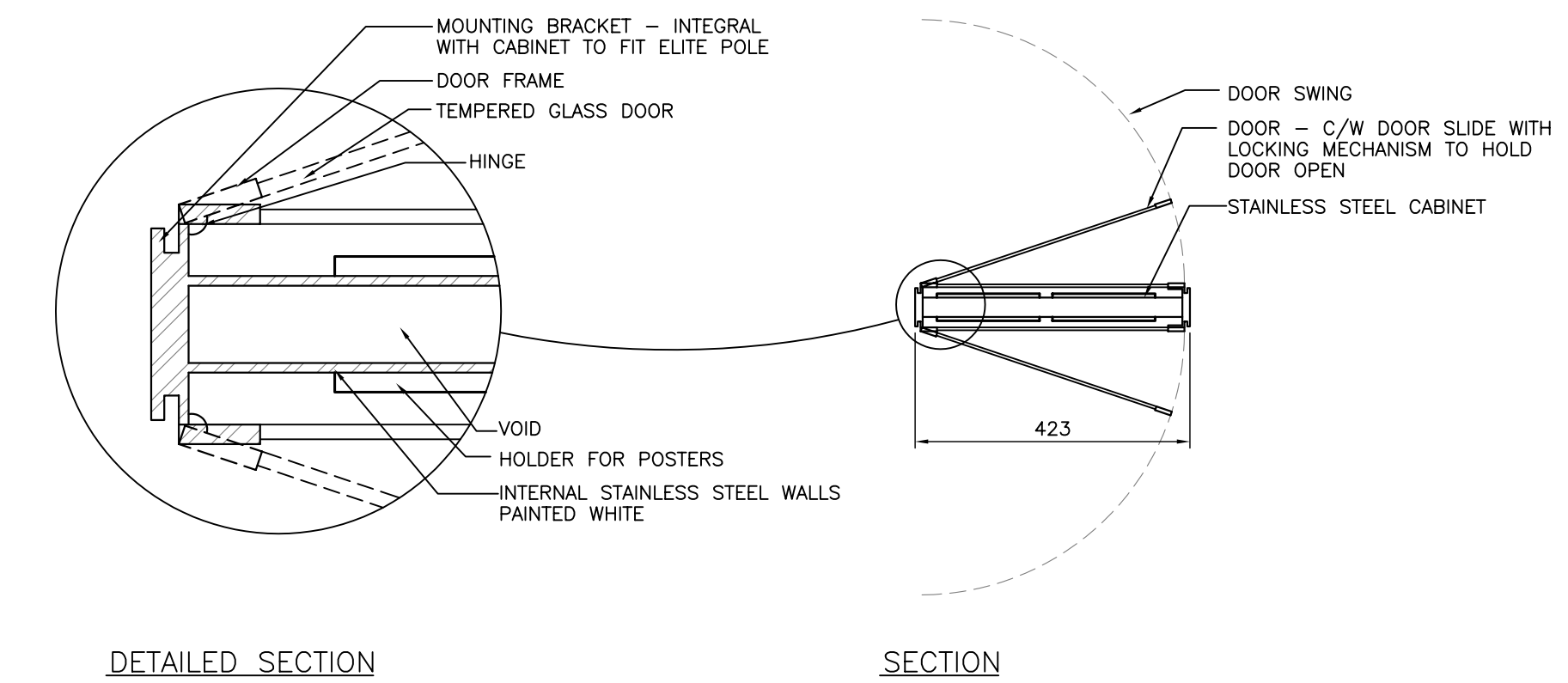
DETAIL 9 - ILLUMINATED SIGN BOX



FRONT ELEVATION

SIDE ELEVATION

DETAIL 10 - TIP DISPLAY BOX



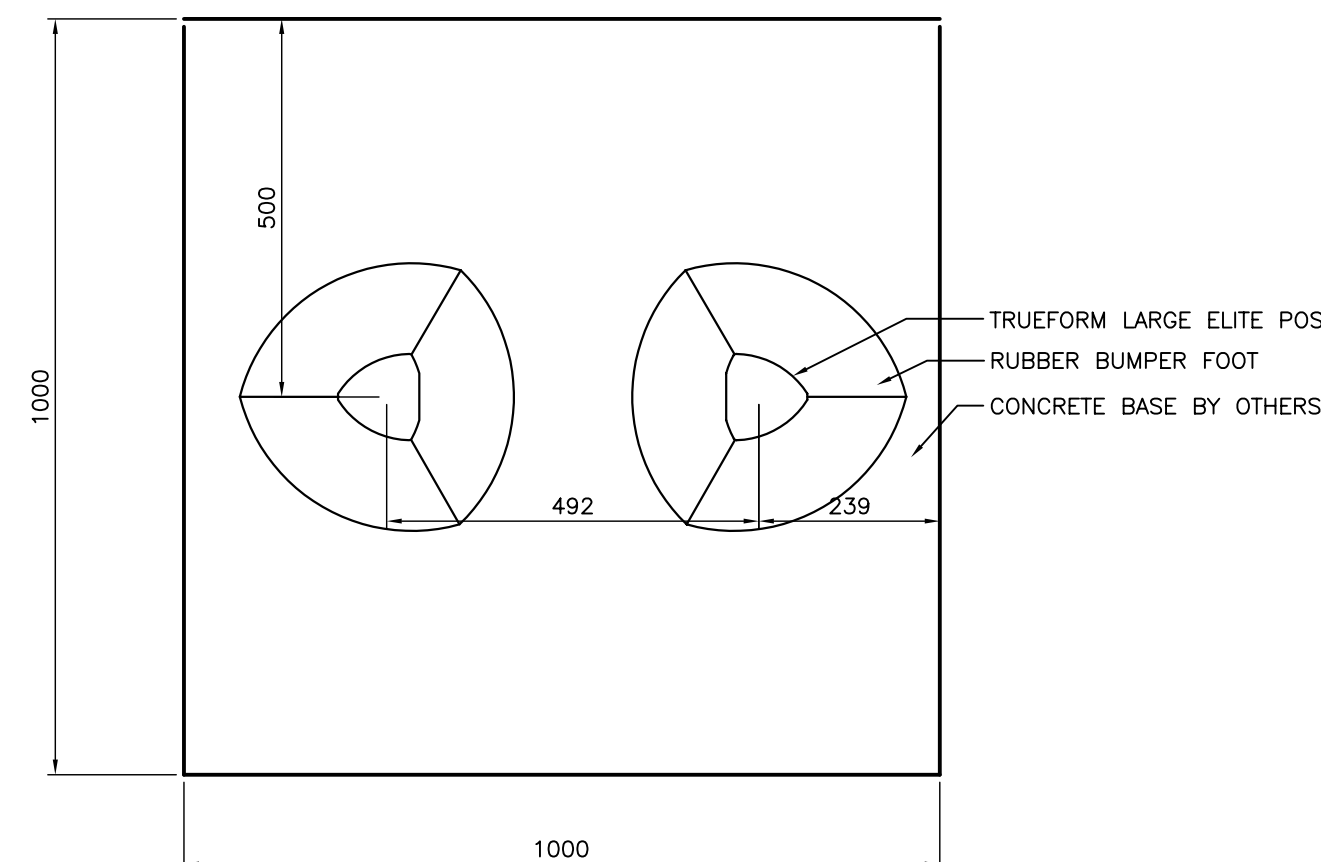
DETAILED SECTION

SECTION

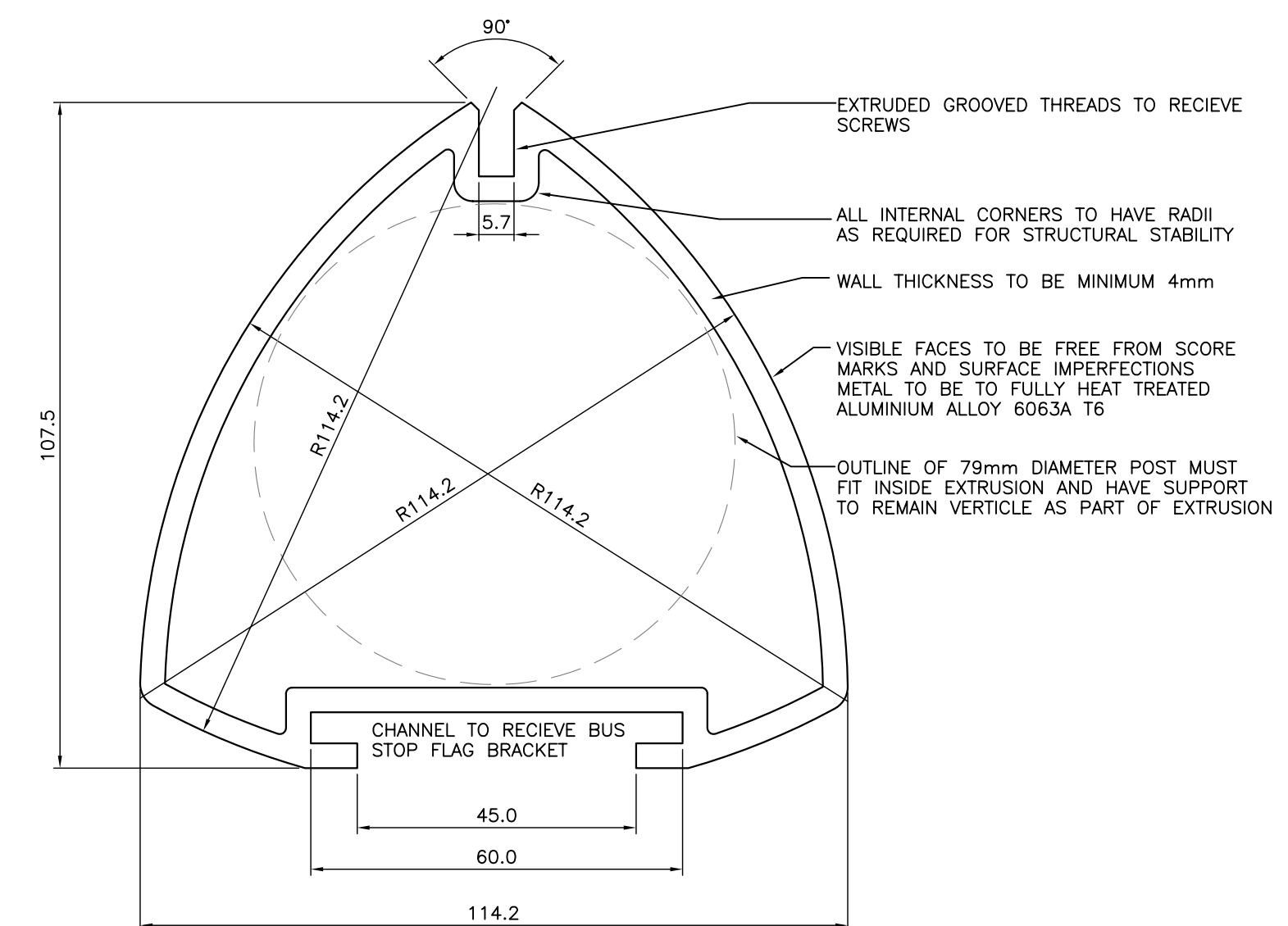
NOT FOR CONSTRUCTION

ALL DIMENSIONS PROVIDED FOR INFORMATION ON DESIGN INTENT.

CONTRACTOR TO SUPPLY SHOP DRAWINGS STAMPED BY A STRUCTURAL ENGINEER LICENSED TO PRACTICE IN THE PROVINCE OF MANITOBA WITH EXTENSIVE EXPERIENCE IN THE DESIGN & MANUFACTURING OF ALUMINIUM SIGNS AND STRUCTURES FOR PUBLIC TRANSIT. SHOP DRAWINGS TO INCLUDE WALL THICKNESSES, MATERIALS ETC. AS LISTED IN THE SPECIFICATIONS.



PLAN



BASIC EXTERIOR FORM OF ELITE POST. INTERNAL STRUCTURE AS ENGINEERED BY TRUEFORM ENGINEERING. DESIGN OF POST EXTRUSION IS UNDER DESIGN COPYRIGHT OF TRUEFORM LLC. BASIC FORM IS SHOWN FOR INFORMATION ONLY COURTESY OF TRUEFORM ENGINEERING.

DETAIL 12 - LARGE ELITE POST SECTION (TYP)

No.	Revisions	Date	By

Date: 19-01-07 Scale: 1:10

Designed By: JW/SR Drawn By: JW Checked By: BM/AR



Client: WINNIPEG TRANSIT
Project Title: WINNIPEG TRANSIT BUS STOP SIGNAGE SYSTEM

Sheet Title: TRANSIT INFORMATION POSTER KIOSK

Project No. 06-029 Drawing No. LS-3