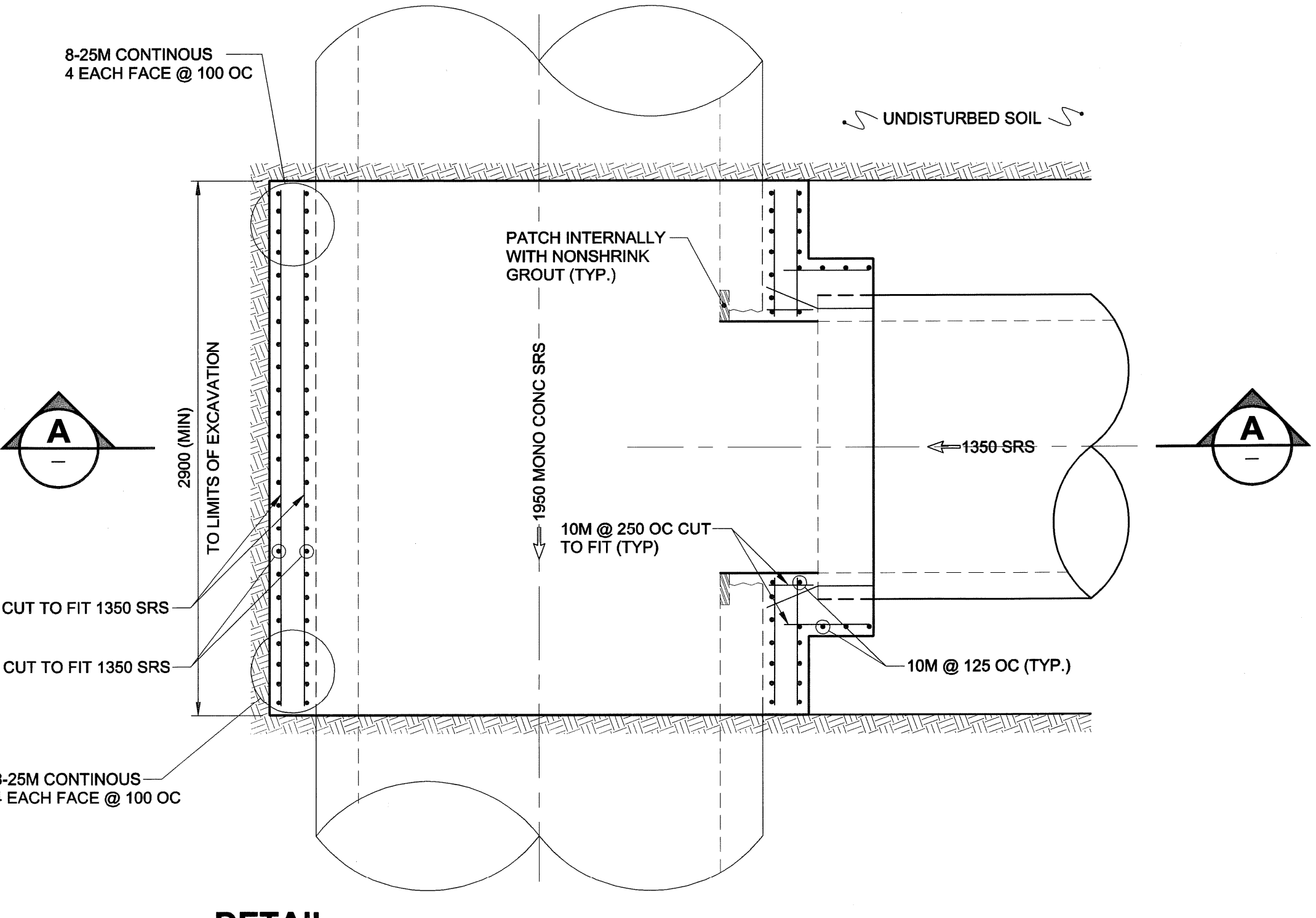
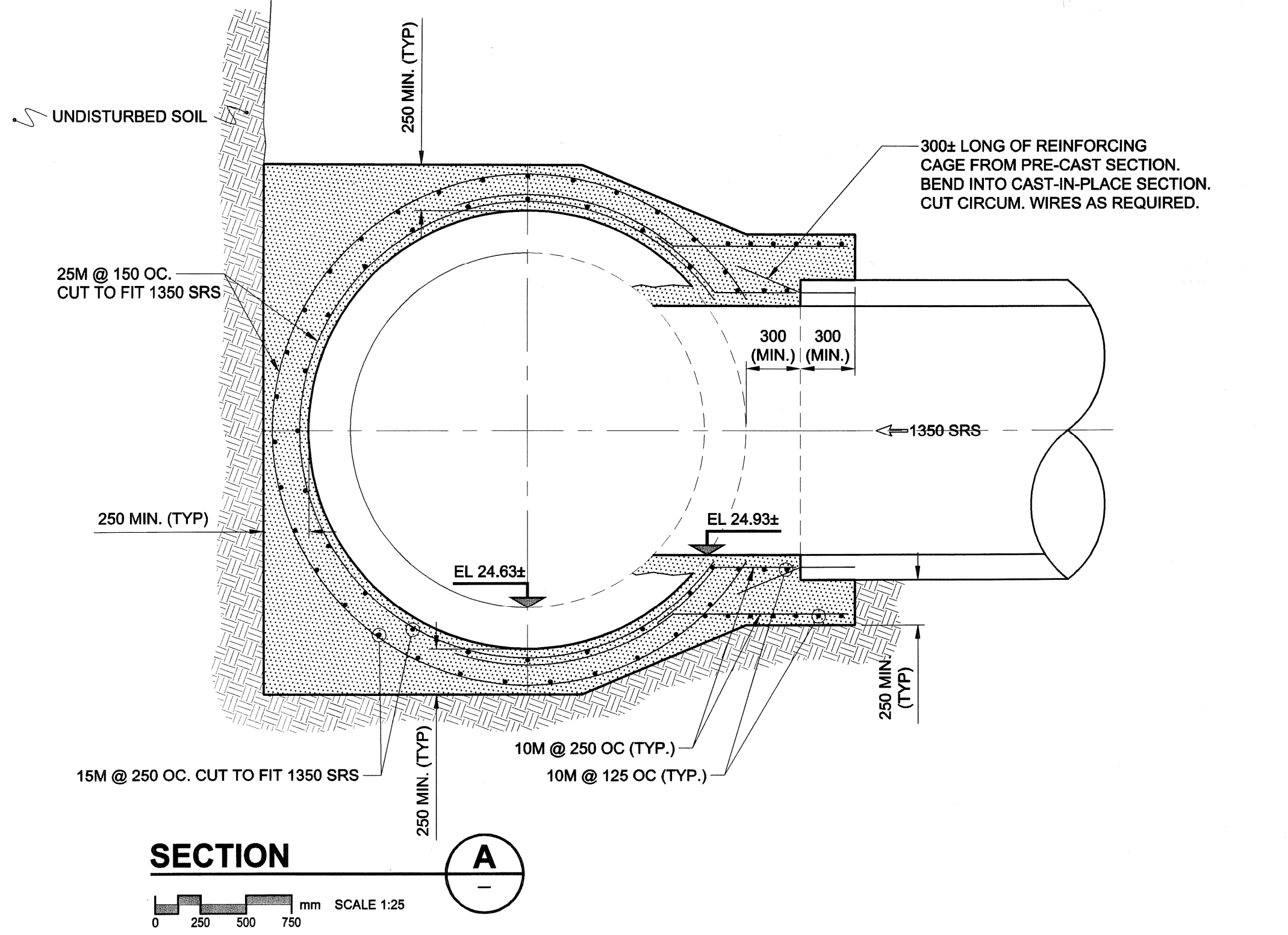
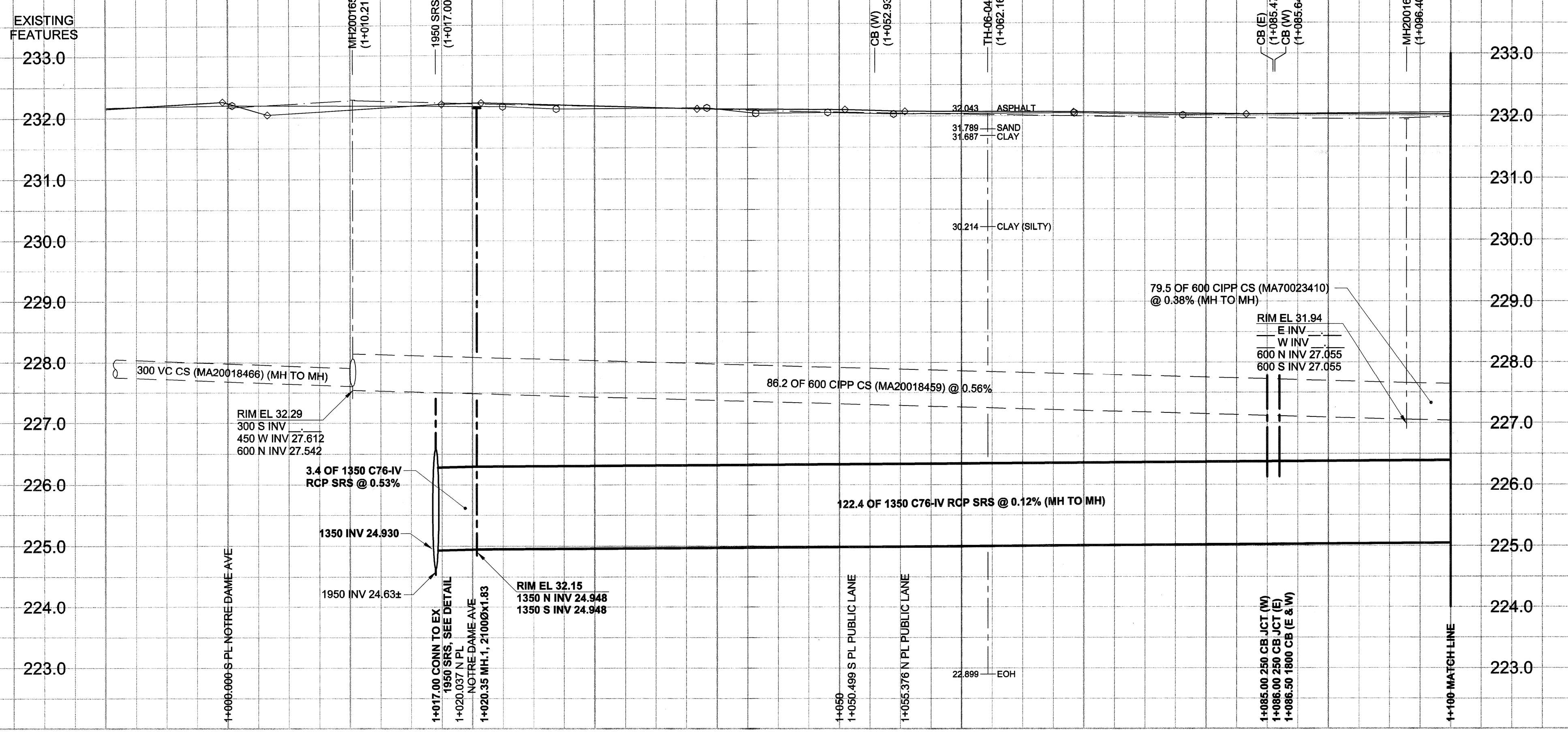


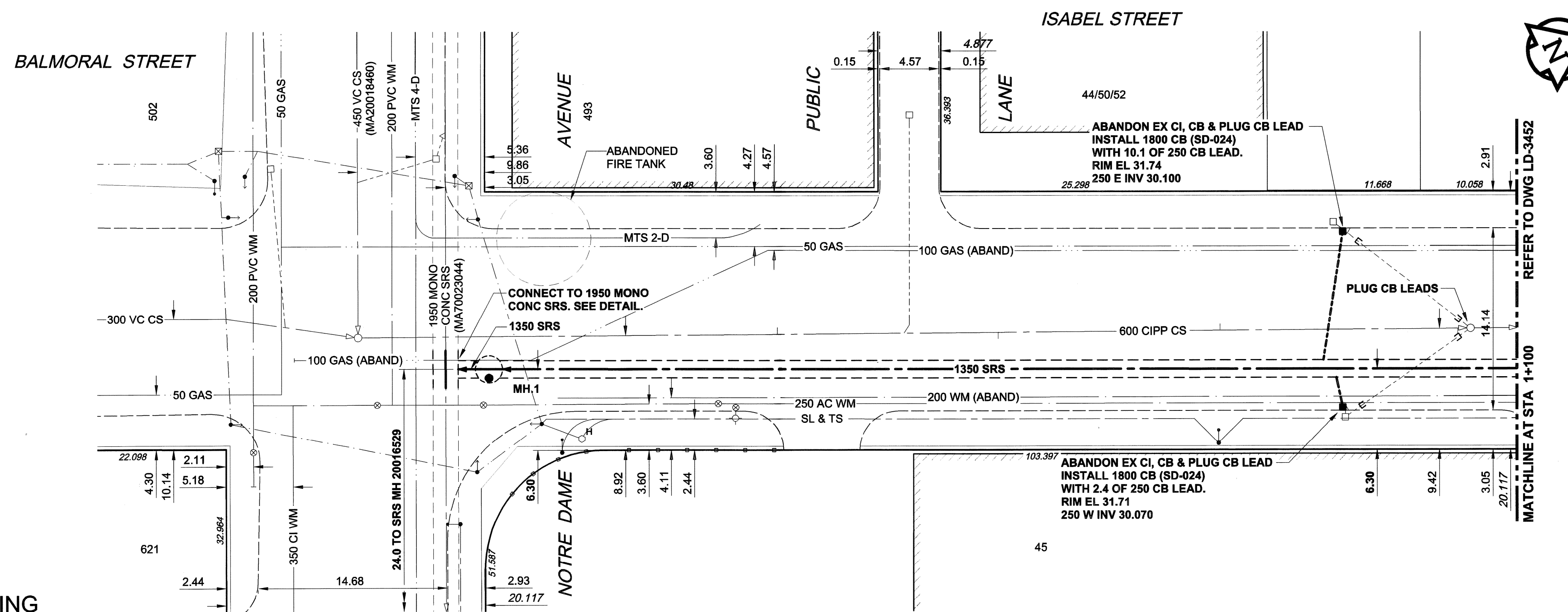
D SIZE 22" x 34" (559mm x 864mm) PLOT: 07/01/10 10:19:21 AM UMA FILE NAME: D265-177-03\_00-C-001\_RX.dwg Saved By: lberard



**SECTION A**  
SCALE 1:25

**DETAIL**  
SCALE 1:25

- CONSTRUCTION NOTES:**
- FOR DETAILED TEST HOLE INFORMATION, SEE SPECIFICATION.
  - THE LOCATION OF ALL SERVICES IS TO BE CONFIRMED IN THE FIELD.
  - INSTALL NEW SEWERS AND CATCHBASIN LEADS BY TRENCHLESS METHODS WHEREVER POSSIBLE.
  - RENEW/REHABILITATE CATCHBASINS & RENEW CATCHBASIN LEADS WHERE NOTED.



**WARNING**  
IF POWER EQUIPMENT OR EXPLOSIVES ARE TO BE USED FOR EXCAVATION ON THIS PROJECT, THE CONTRACTOR MUST:  
1) NOTIFY THE GAS COMPANY OF THE PROPOSED LOCATION OF EXCAVATION.  
2) TAKE PRECAUTION TO AVOID DAMAGE TO GAS COMPANY INSTALLATIONS.  
SEE PROVINCIAL REGULATION 140/92 FOR DETAILS

150 mm WM	WATERMAIN	150 mm WM	CURB STOP	150 mm WM	WATERMAIN	150 mm WM
○	HYDRANT	○	REDUCER	○	HYDRANT	○
○	VALVE	○	COUPLING	○	VALVE	○
○	LAND DRAINAGE SEWER	○	ANODE	○	LAND DRAINAGE SEWER	○
○	WASTE WATER SEWER	○	HYDRO	○	WASTE WATER SEWER	○
○	MANHOLE	○	MTS	○	PAVEMENT CROWN	○
○	CATCH BASIN	○	GAS	○	NW PROPERTY LINE	○
○	CURB INLET	○	TESTHOLE	○	S/E PROPERTY LINE	○
○	CULVERT	○	LAMP STANDARD	○	NW GUTTER	○
○	PIPE ABANDONMENTS	○	TREE	○	S/E GUTTER	○
○	SURVEY BAR	○		○		○
○	EXISTING	○	LEGEND - PLAN	○	LEGEND - PROFILE	○

**LOCATION APPROVED**  
UNDERGROUND STRUCTURES

DATE: 07/01/10  
BY: KMB

**NOTE:**  
LOCATION OF UNDERGROUND STRUCTURES AS SHOWN ARE BASED ON THE BEST INFORMATION AVAILABLE. BUT NO GUARANTEE IS GIVEN THAT ALL EXISTING UTILITIES ARE SHOWN OR THAT THE GIVEN LOCATIONS ARE EXACT. CONFIRMATION OF EXISTENCE AND EXACT LOCATION OF ALL SERVICES MUST BE OBTAINED FROM THE INDIVIDUAL UTILITIES BEFORE PROCEEDING WITH CONSTRUCTION.

**METRIC**  
WHOLE NUMBERS INDICATE MILLIMETRES  
DECIMAL NUMBERS INDICATE METRES

UMA | AECOM

DESIGNED BY: GEB / DME  
CHECKED BY: [Signature]  
DRAWN BY: KMB  
APPROVED BY: [Signature]  
HOR. SCALE: 1:250  
VERT. SCALE: 1:50  
DATE: 01/07/10

**APCGM**  
Certificate of Authorization  
UMA Engineering Ltd.  
No. 256 Expiry: April 30, 2007

PROFESSIONAL'S SEAL  
A. NAGY  
REGISTERED PROFESSIONAL ENGINEER  
CONSULTANT DRAWING NO. 01  
D265-177-03

**THE CITY OF WINNIPEG**  
WATER AND WASTE DEPARTMENT

**ALEXANDER/BANNATYNE**  
COMBINED SEWER RELIEF  
CONTRACT 3A

ISABEL STREET  
NOTRE DAME AVENUE  
TO 63m SOUTH OF McDERMOT AVENUE

SHEET 1 OF 6  
CITY DRAWING NUMBER  
LD-3451  
REV 0

BID OPPORTUNITY NO. 809-2006