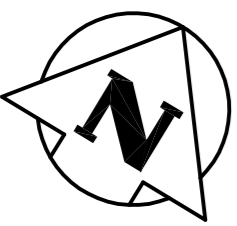
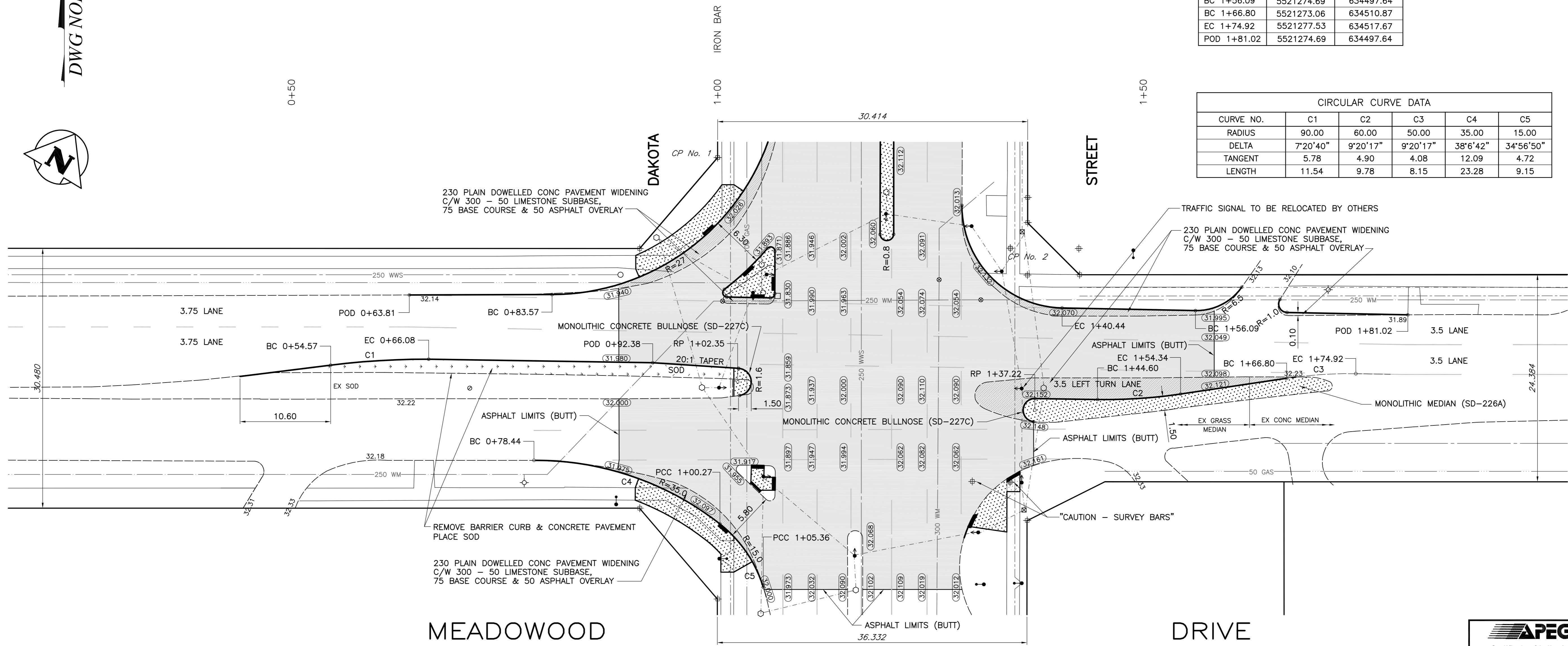


DWG NORTH



LAYOUT COORDINATES (NAD 83)		
DESCRIPTION	NORTHING	EASTING
CP No. 1 (IB)	5521262.66	634439.99
CP No. 2 (IB)	5521270.34	634475.12
BC 0+54.57	5521219.07	634412.48
POD 0+63.81	5521230.78	634416.45
EC 0+66.08	5521225.35	634422.15
BC 0+78.44	5521221.13	634438.75
BC 0+83.57	5521239.09	634431.01
POD 0+92.38	5521237.96	634445.23
PCC 1+00.27	5521225.40	634461.42
RP 1+02.35	5521240.91	634455.01
PCC 1+05.36	5521221.44	634469.51
RP 1+37.22	5521255.23	634486.99
EC 1+40.44	5521267.24	634483.87
BC 1+44.60	5521259.95	634492.79
EC 1+54.34	5521265.31	634500.95
BC 1+56.09	5521274.69	634497.64
BC 1+66.80	5521273.06	634510.87
EC 1+74.92	5521277.53	634517.67
POD 1+81.02	5521274.69	634497.64

CIRCULAR CURVE DATA					
CURVE NO.	C1	C2	C3	C4	C5
RADIUS	90.00	60.00	50.00	35.00	15.00
DELTA	7°20'40"	9°20'17"	9°20'17"	38°6'42"	34°56'50"
TANGENT	5.78	4.90	4.08	12.09	4.72
LENGTH	11.54	9.78	8.15	23.28	9.15



**LOCATION APPROVED UNDERGROUND STRUCTURES**

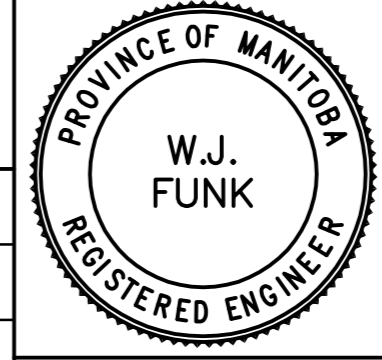
EXISTING	LEGEND-PLAN	PROPOSED	EXISTING	LEGEND-PLAN	PROPOSED	EXISTING	LEGEND-PLAN	PROPOSED
150 WM	WATERMAIN	150 WM	○	MANHOLE	●	---	GAS	---
400 FM	FEEDERMAIN	400 FM	□	CATCHBASIN	■	---	HYDRO	---
300 LDS	LAND DRAINAGE SEWER	300 LDS	∇	CURB INLET	▼	---	MTS	---
250 WWS	WASTEWATER SEWER	250 WWS	•	HYDRO POLE	○	---	SIGNALS MANHOLE	---
300 CS	COMBINED SEWER	300 CS	••	LIGHT STANDARD	×	1.75	ELEVATION	(32.000)
200 FCM	FORCEMAIN	200 FCM	←	ANCHOR	—	---	SIDEWALK	---
---	JUNCTIONS	---	⊕	TREE	—	---	CURB	---
---	HYDRANT	---	+	LEGAL DIMENSION	---	---	ASPHALT	---
---	VALVE	---	⊗	SURVEY BAR	---	---	CONCRETE	---
---	CURB STOP	---	⊕	TRAFFIC SIGNAL	---	---	MILLING/PATCHING	---

NOTE: LOCATION OF UNDERGROUND STRUCTURES AS SHOWN ARE BASED ON THE BEST INFORMATION AVAILABLE. BUT NO GUARANTEE IS GIVEN THAT ALL EXISTING UTILITIES ARE SHOWN OR THAT THE GIVEN LOCATIONS ARE EXACT. CONFIRMATION OF EXISTENCE AND EXACT LOCATION OF ALL SERVICES MUST BE OBTAINED FROM THE INDIVIDUAL UTILITIES BEFORE PROCEEDING WITH CONSTRUCTION.

NO.	REVISIONS	DATE	BY
00	ISSUED FOR TENDER	07.03.06	
A	ISSUED FOR APPROVAL	07.02.19	DAL

**WARDROP** | Engineering Inc.

DESIGNED BY	DALE	CHECKED BY	DATE
DRAWN BY	GMD	APPROVED BY	DATE
HOR. SCALE:	1 : 250	RELEASED FOR CONSTRUCTION	DATE
VERTICAL:	1 : 10		



**THE CITY OF WINNIPEG**  
PUBLIC WORKS DEPARTMENT  
ENGINEERING DIVISION

CONCRETE PAVEMENT REPAIRS AND ASPHALT OVERLAY

MEADOWOOD DRIVE  
60m WEST OF DAKOTA STREET TO  
50m EAST OF DAKOTA STREET

CITY DRAWING NUMBER: **P-3275-5**  
SHEET OF: **5** OF **5**  
**C0005**