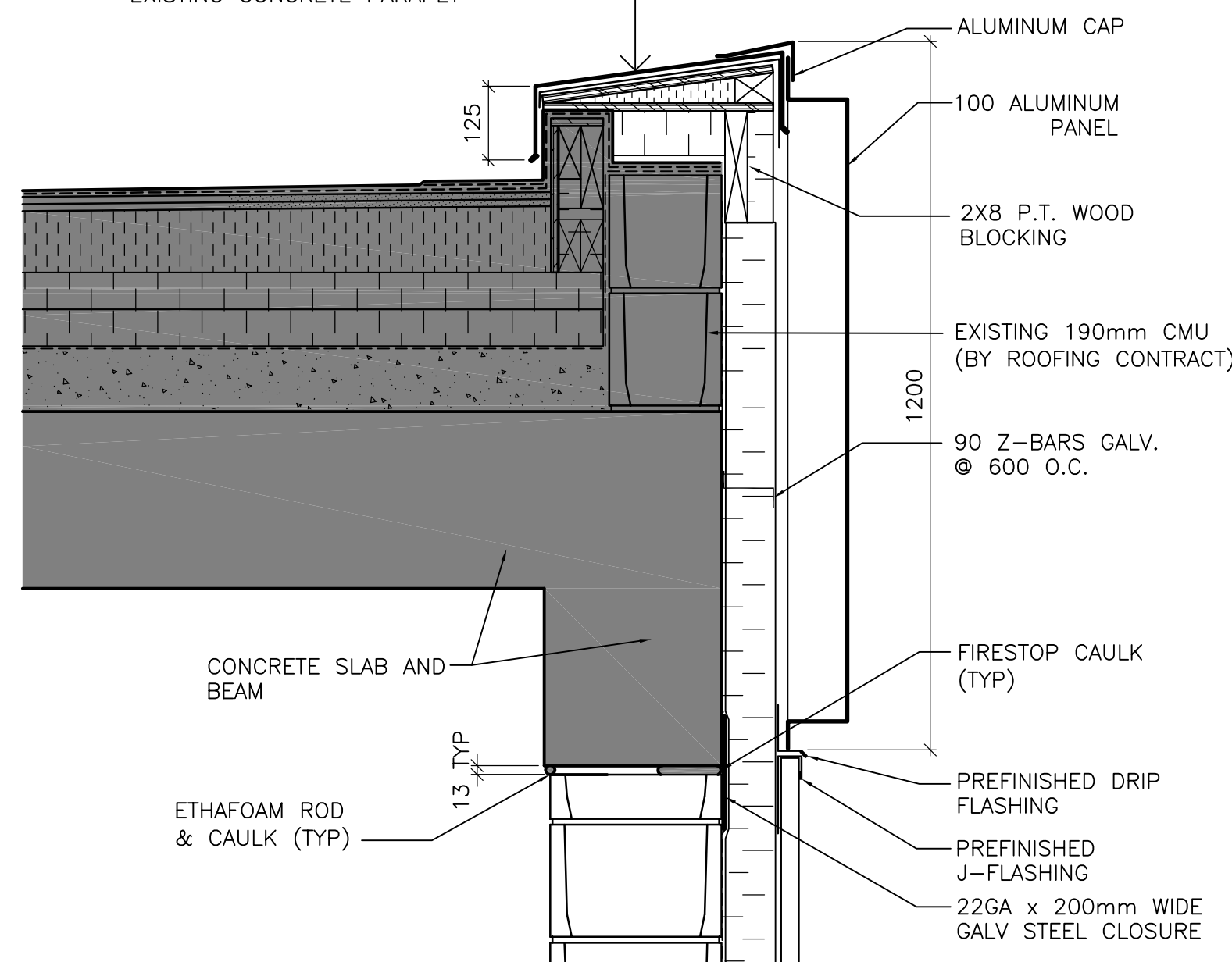
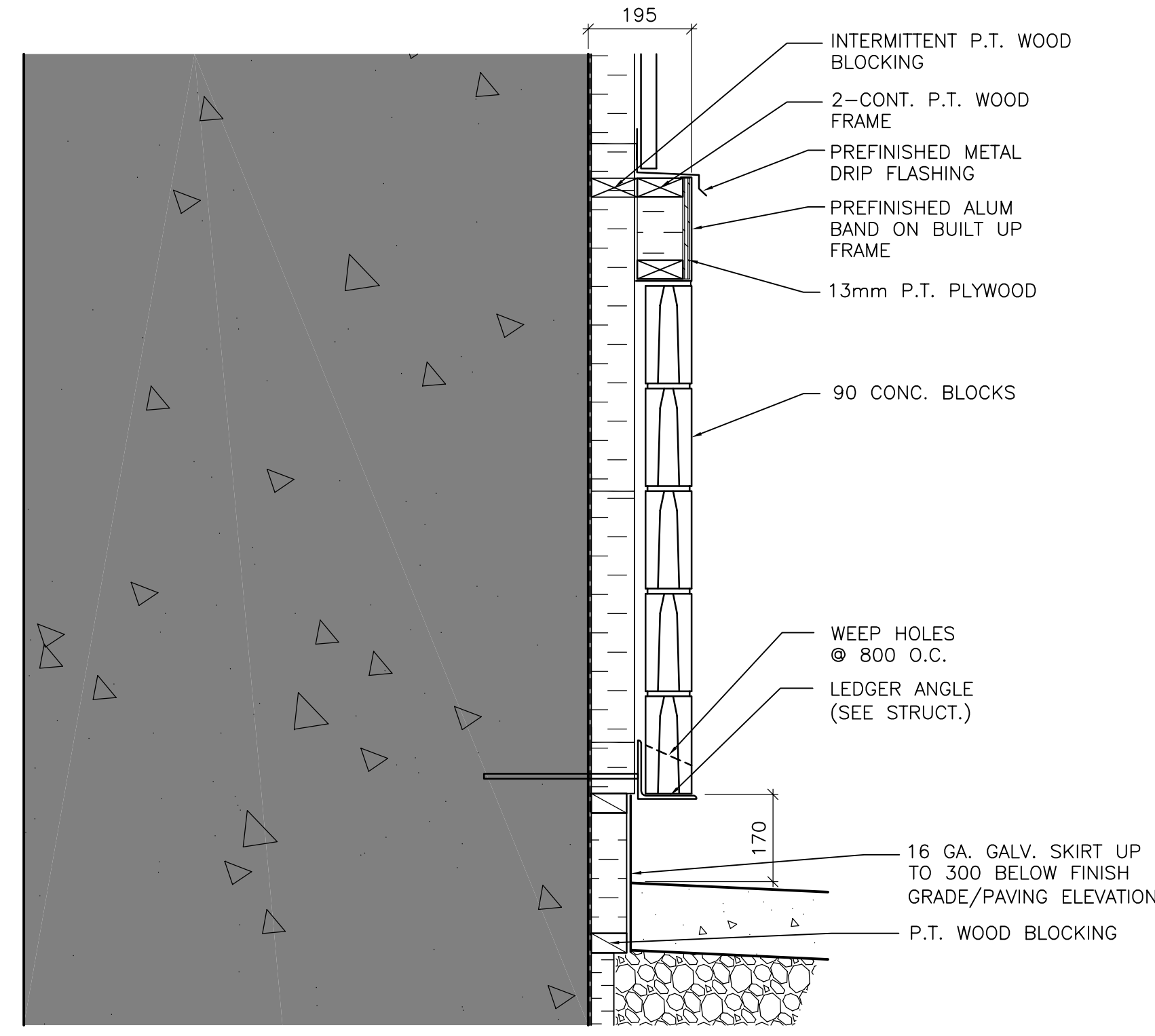


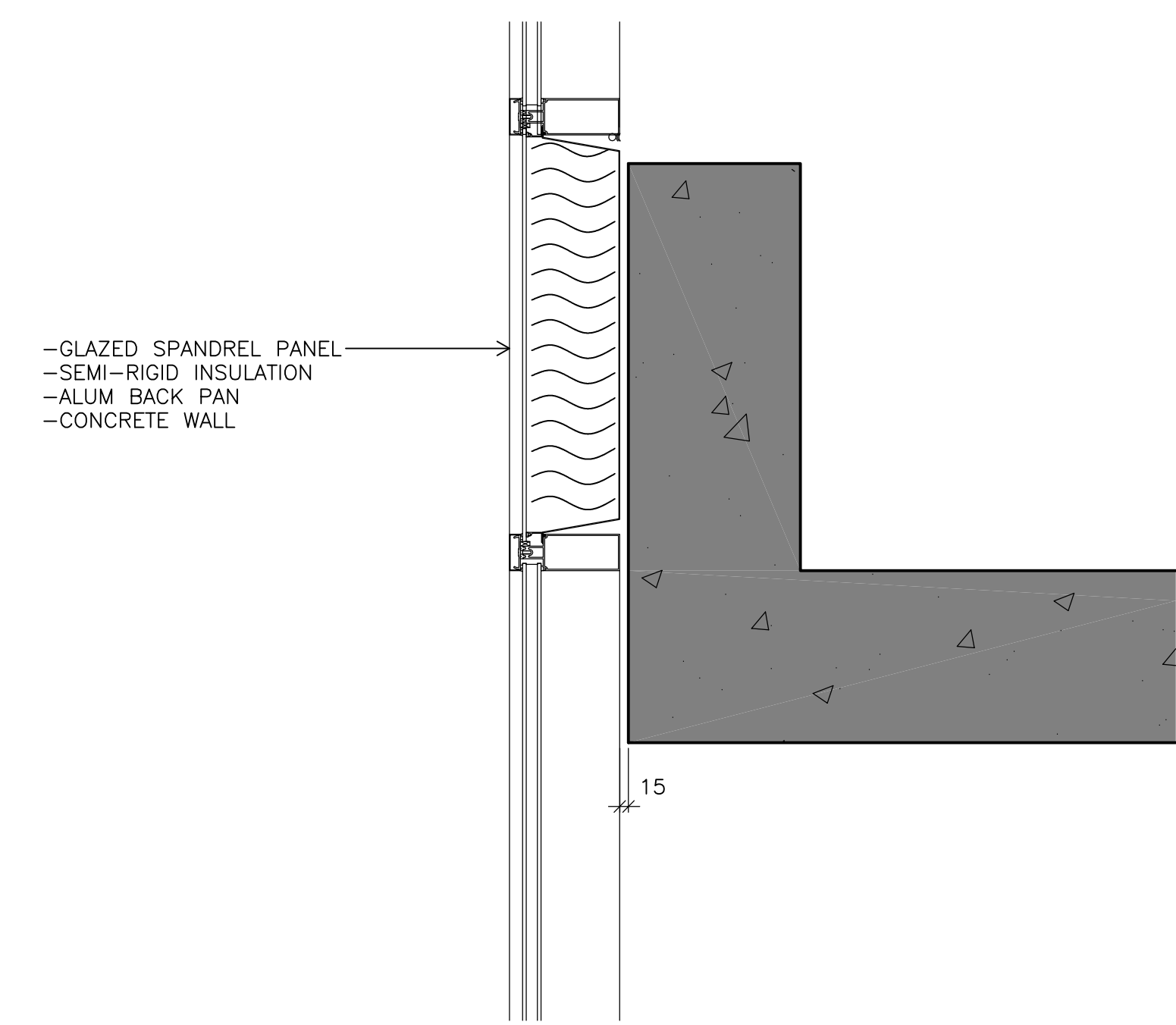
TYPICAL PARAPET CONSTRUCTION
 - PREFIN ALUM CAP FLASHING
 - ROOF BASE MEMBRANE
 - 13 SLOPED PLYWOOD C/W BLOCKING
 - 38-12 SLOPED EPS INSULATION
 - 75 RIGID INSULATION
 - 3 PLY AVB OVER EXIST MEMBRANES
 - EXISTING CONCRETE PARAPET



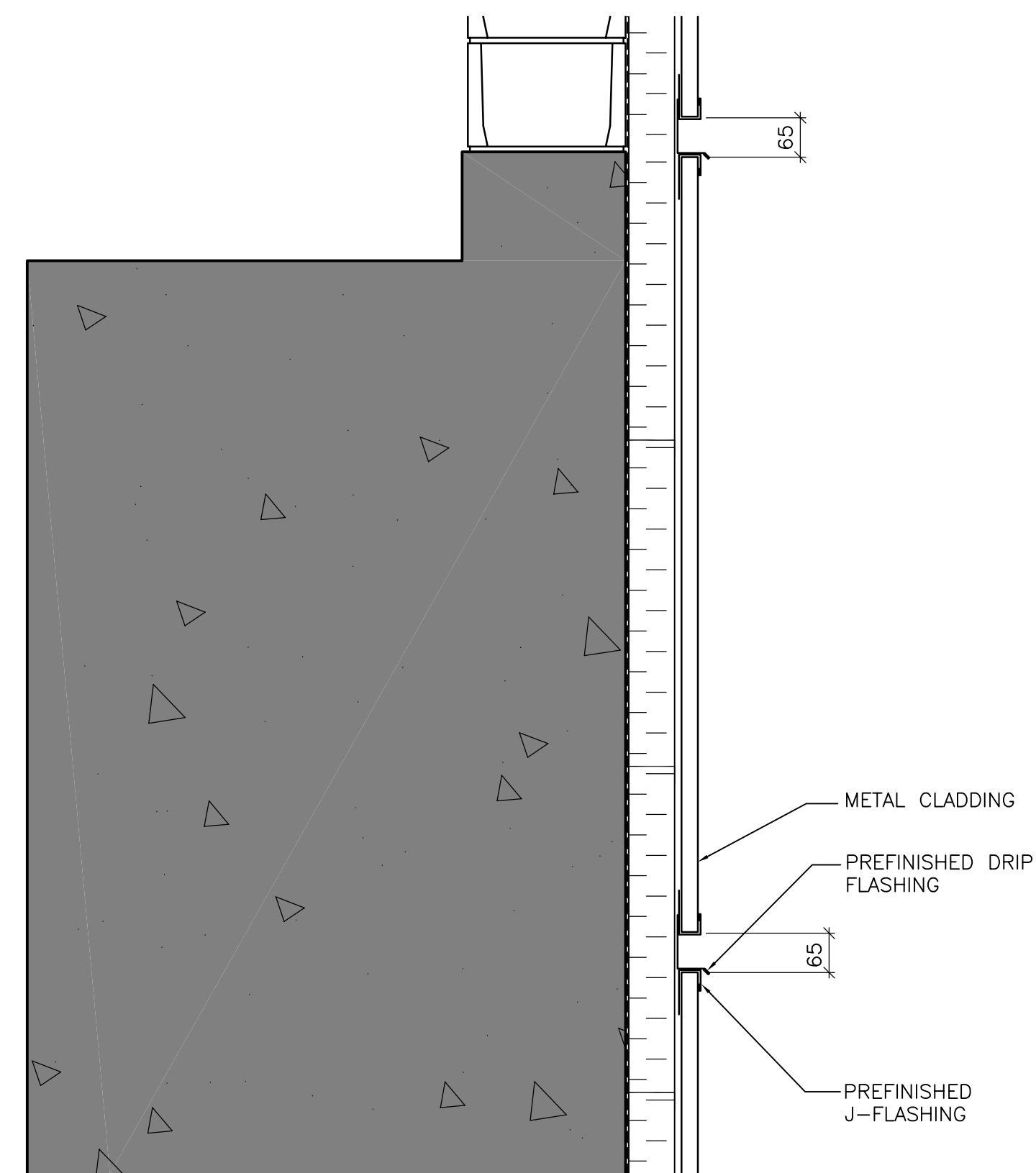
A SECTION DETAIL
 WB-B0250 1:10



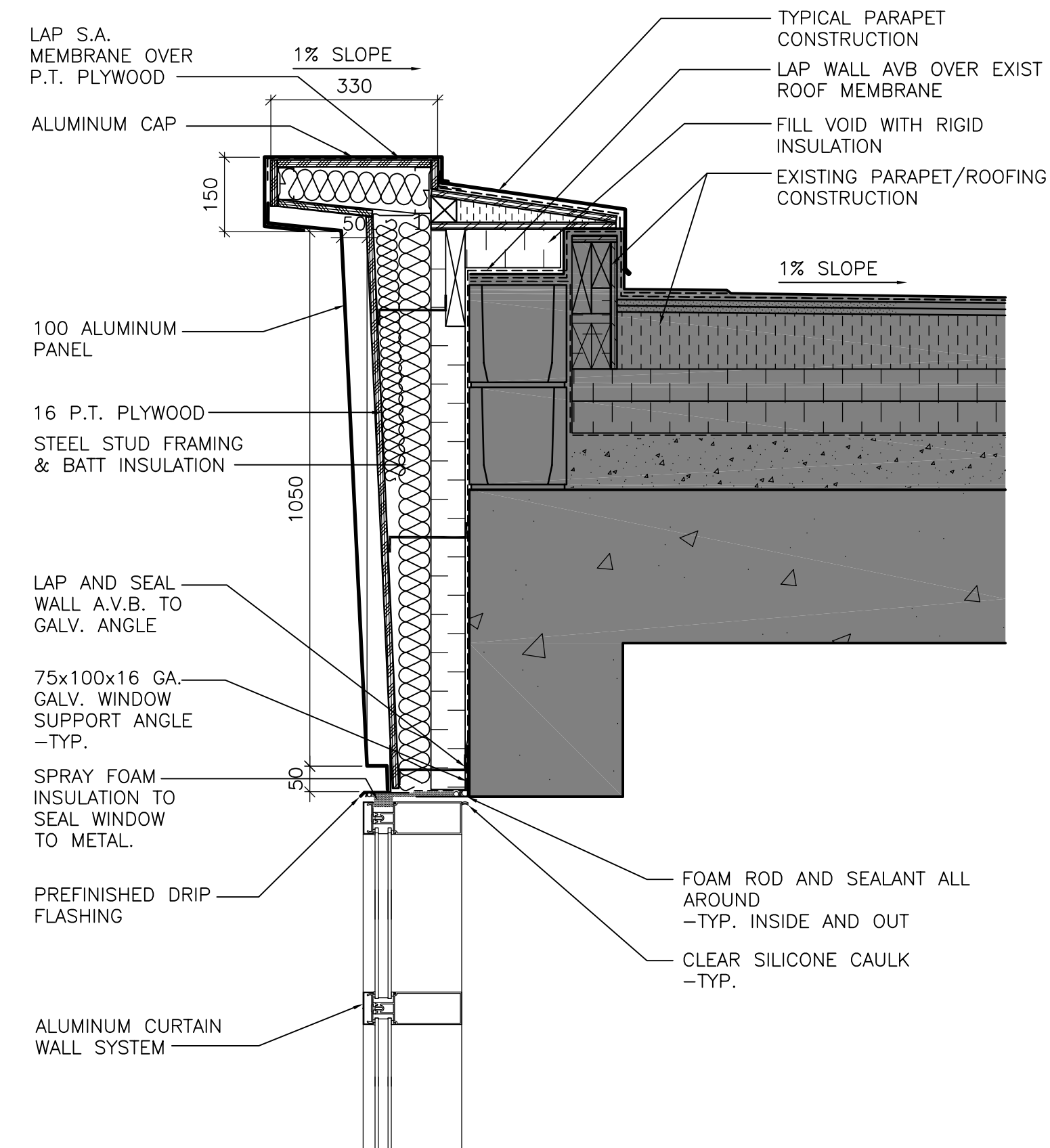
C SECTION DETAIL
 WB-B0250 1:10



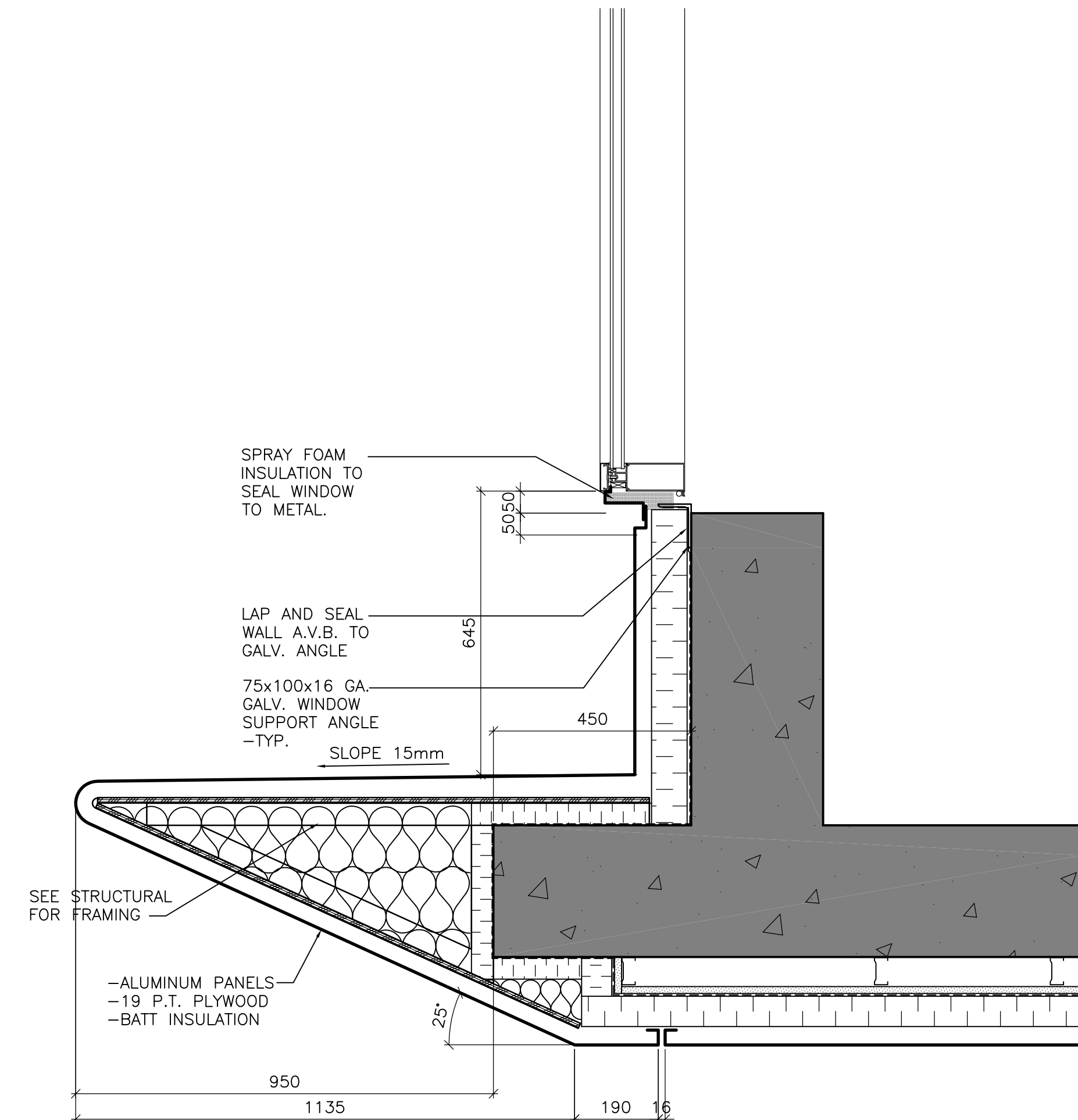
E SECTION DETAIL
 WB-B0250 1:10



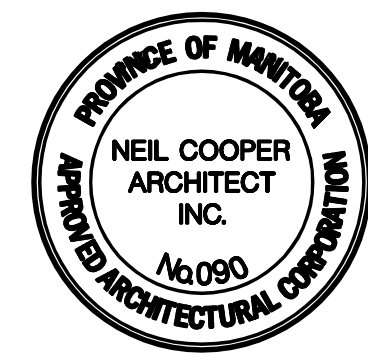
B SECTION DETAIL
 WB-B0250 1:10



D SECTION DETAIL
 WB-B0250 1:10



F SECTION DETAIL
 WB-B0250 1:10



B.M. ELEV.	
DESIGNED BY	NC
DRAWN BY	IC/LK
SCALE:	AS NOTED
ISSUED FOR TENDER	07/03/19 LK
NO. REVISIONS	DATE BY
DATE	2005/11/28

CH2MHILL Frederickson Cooper ARCHITECTS	EarthTech A Tyco International Ltd. Company
DESIGNED BY	NC
DRAWN BY	IC/LK
SCALE:	AS NOTED
ISSUED FOR TENDER	07/03/19 LK
NO. REVISIONS	DATE BY
DATE	2005/11/28

ENGINEER'S SEAL	
ORIGINAL SIGNED BY	NEIL COOPER
	2007/03/19
CONSULTANT DRAWING NO.	WB-B0404

THE CITY OF WINNIPEG WATER AND WASTE DEPARTMENT ENGINEERING DIVISION	
WATER TREATMENT PLANT MAIN BUILDING BUILDING ENVELOPE	CITY FILE NUMBER
ARCHITECTURAL DETAILS	SHEET OF
	CITY DRAWING NUMBER
	1-0601B-A-B0404-001-00D