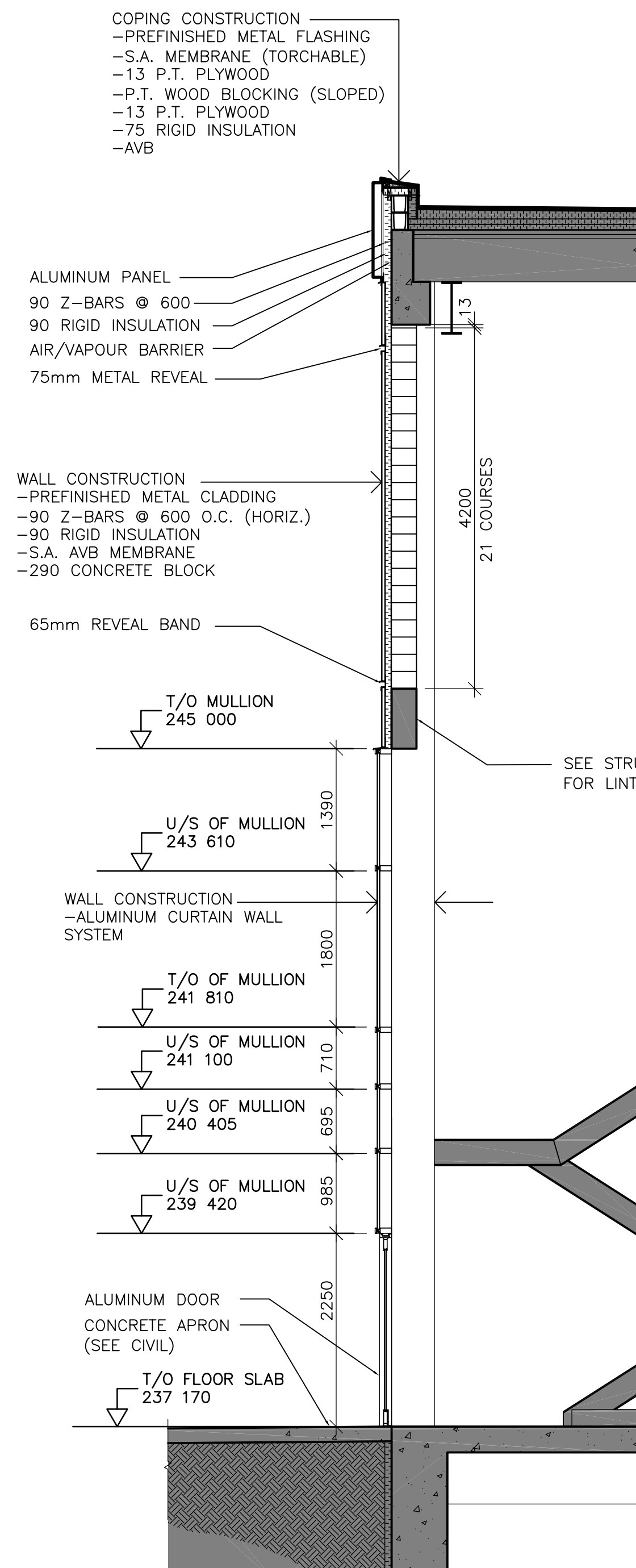


12 WALL SECTION
WB-B0110 1 : 50

COPING CONSTRUCTION
- PREFINISHED METAL FLASHING
- S.A. MEMBRANE (TORCHABLE)
- 13 P.T. PLYWOOD
- P.T. WOOD BLOCKING (SLOPED)
- 13 P.T. PLYWOOD
- 75 RIGID INSULATION
- AVB



13 WALL SECTION
WB-B0110 1 : 50

COPING CONSTRUCTION
- PREFINISHED METAL FLASHING
- S.A. MEMBRANE (TORCHABLE)
- 13 P.T. PLYWOOD
- P.T. WOOD BLOCKING (SLOPED)
- 13 P.T. PLYWOOD
- 75 RIGID INSULATION
- AVB

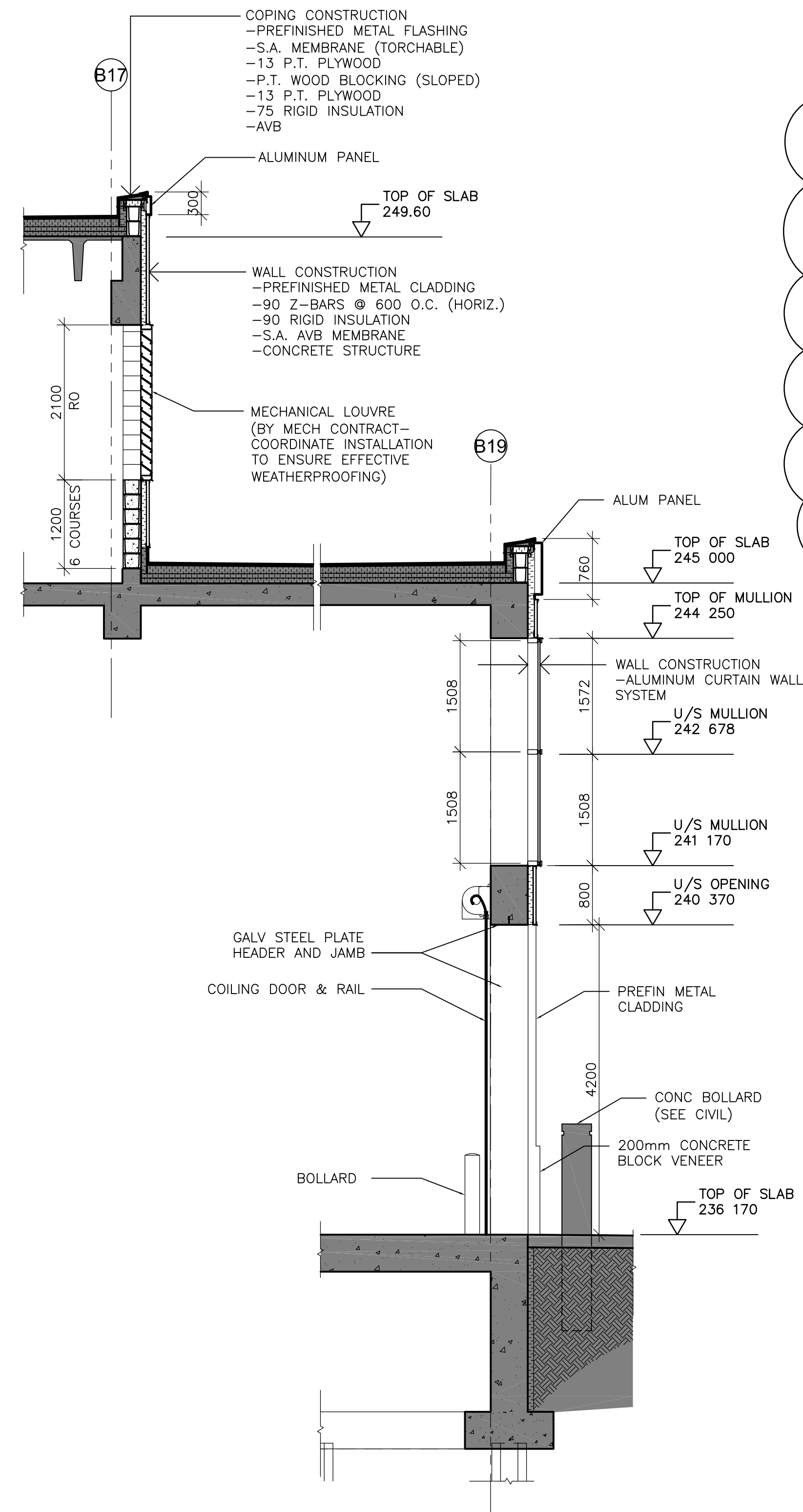
ALUMINUM PANEL
90 Z-BARS @ 600
90 RIGID INSULATION
AIR/VAPOUR BARRIER
75mm METAL REVEAL

WALL CONSTRUCTION
- PREFINISHED METAL CLADDING
- 90 Z-BARS @ 600 O.C. (HORIZ.)
- 90 RIGID INSULATION
- S.A. AVB MEMBRANE
- 290 CONCRETE BLOCK

65mm REVEAL BAND

SEE STRUCTURAL FOR LINTEL/BEAM

ALUMINUM DOOR
CONCRETE APRON
(SEE CIVIL)



14 WALL SECTION
WB-B0110 1 : 50

COPING CONSTRUCTION
- PREFINISHED METAL FLASHING
- S.A. MEMBRANE (TORCHABLE)
- 13 P.T. PLYWOOD
- P.T. WOOD BLOCKING (SLOPED)
- 13 P.T. PLYWOOD
- 75 RIGID INSULATION
- AVB

ALUMINUM PANEL

WALL CONSTRUCTION
- PREFINISHED METAL CLADDING
- 90 Z-BARS @ 600 O.C. (HORIZ.)
- 90 RIGID INSULATION
- S.A. AVB MEMBRANE
- CONCRETE STRUCTURE

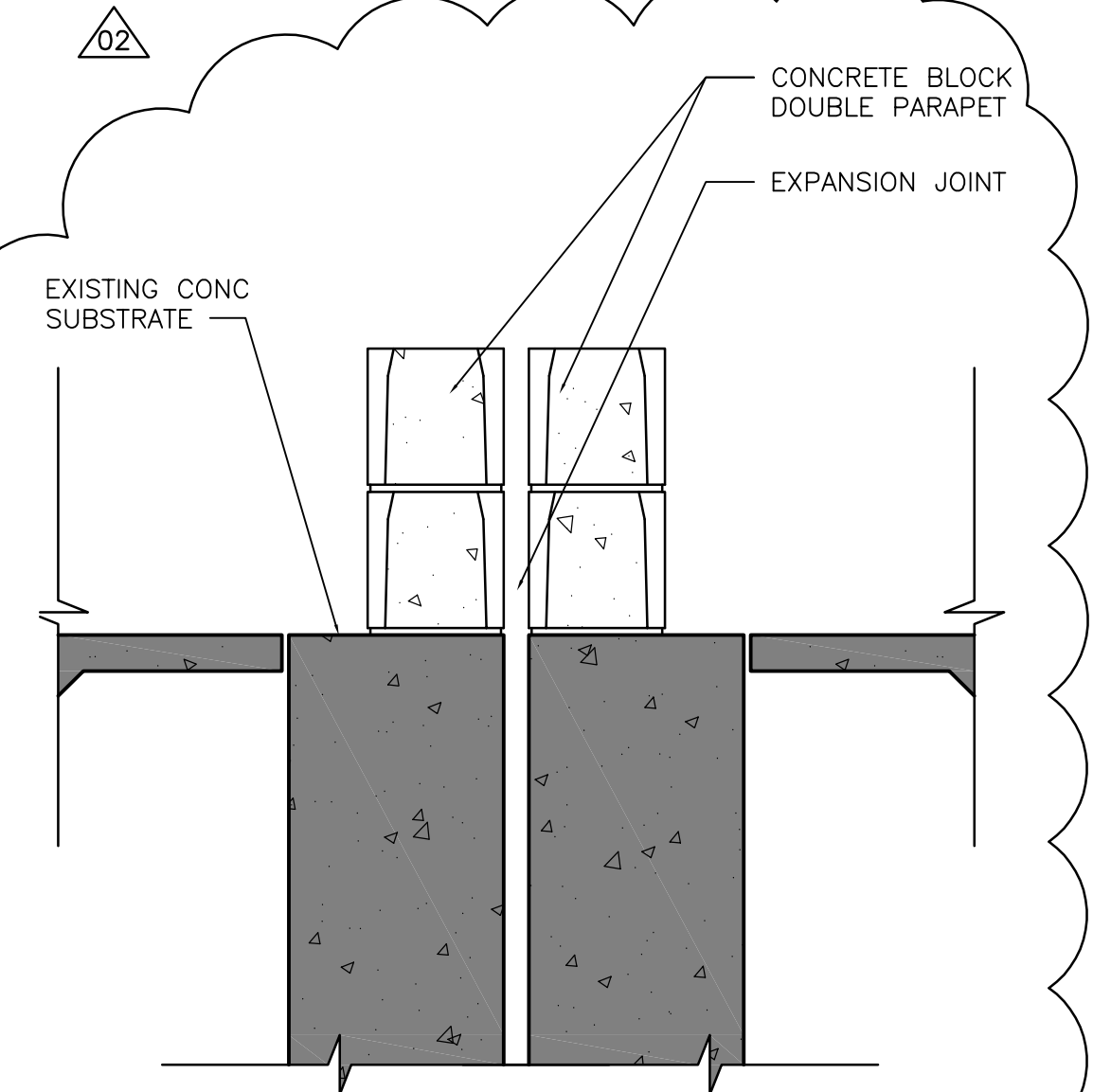
MECHANICAL LOUVRE
(BY MECH CONTRACT -
COORDINATE INSTALLATION
TO ENSURE EFFECTIVE
WEATHERPROOFING)

GALV STEEL PLATE
HEADER AND JAMB
COILING DOOR & RAIL

PREFIN METAL
CLADDING

CONC BOLLARD
(SEE CIVIL)

200mm CONCRETE
BLOCK VENEER



15 DOUBLE PARAPET SECTION (@ EXP JOINT)
WB-B0140 1 : 10



NO.	REVISIONS	DATE	BY	DATE	BY
02	793-2006 ADDENDUM 2	07/04/05	LK		
01	793-2006 ADDENDUM 1	07/03/29	LK		
00	ISSUED FOR TENDER	07/03/19	LK		

DESIGNED BY	NC	CHECKED BY	LK
DRAWN BY	IC	APPROVED BY	AHL
SCALE:	AS SHOWN	RELEASED FOR CONSTRUCTION BY:	R. SOROKOWSKI
DATE	2005/11/28	DATE	2007/03/19

ENGINEER'S SEAL	ORIGINAL SIGNED BY	NEIL COOPER
	DATE	2007/03/19
CONSULTANT DRAWING NO.	WB-B0254	

THE CITY OF WINNIPEG
WATER AND WASTE DEPARTMENT
ENGINEERING DIVISION

WATER TREATMENT PLANT
MAIN BUILDING
BUILDING ENVELOPE

ARCHITECTURAL
WALL SECTIONS

CITY FILE NUMBER
SHEET OF
CITY DRAWING NUMBER
1-0601B-A-B0254-001-020