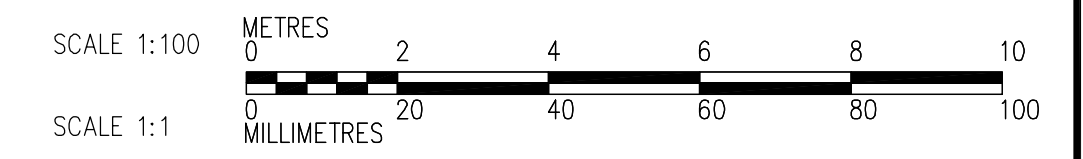
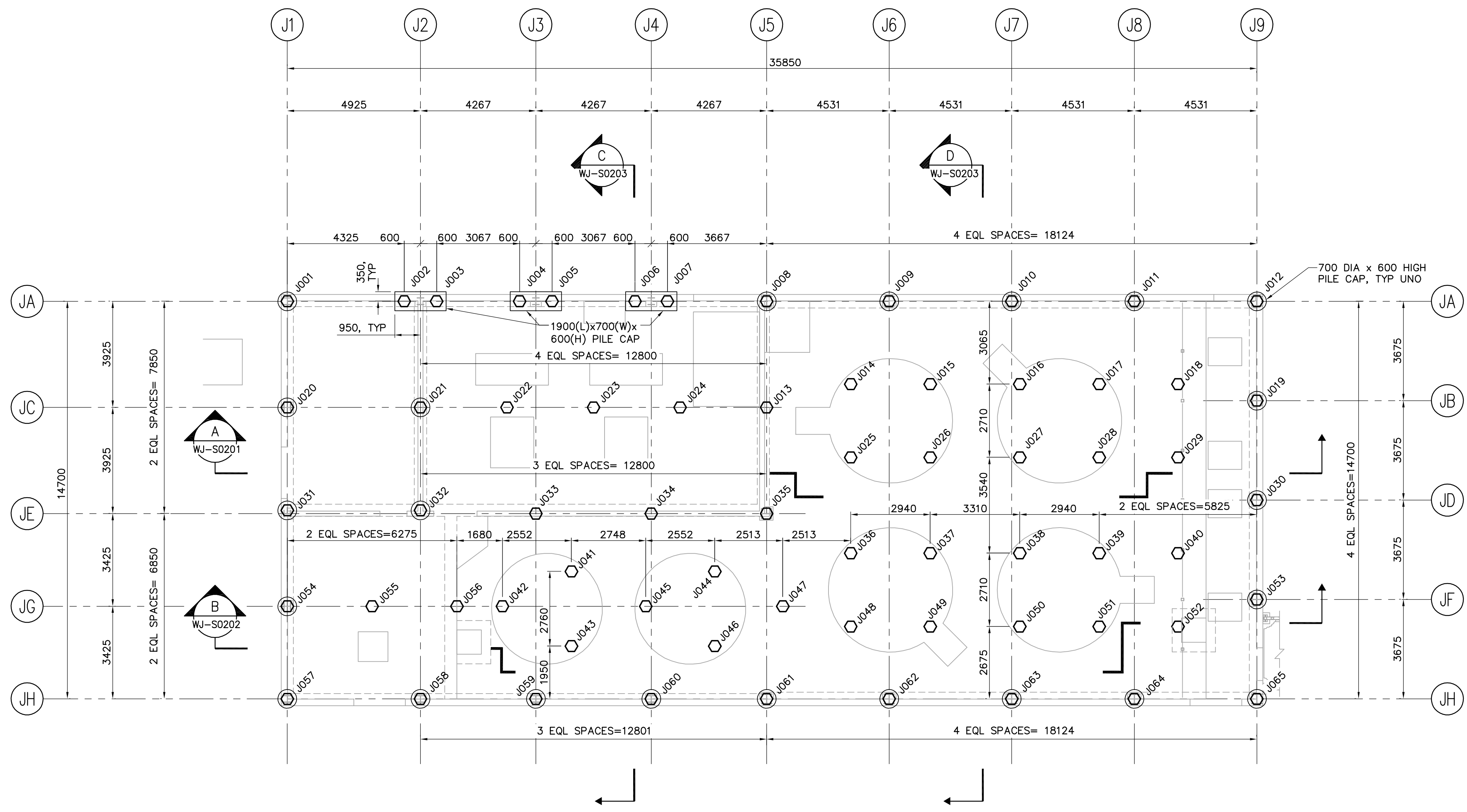


- NOTES:**
1. NUMBERING OF PILES DOES NOT INDICATE SEQUENCE OF INSTALLATION.
 2. ALL PILES TO BE 400mm DIAMETER HEX.
 3. FOR TYPICAL CAST IN PLACE PILE EXTENSION AND CUTOFF DETAILS SEE DRAWING WJ-S0505.
 4. SEE PILE SCHEDULE ON DWG WJ-S0505 FOR PILE ELEVATIONS AND COORDINATES.
 5. FOR GENERAL NOTES SEE DWG WS-S0001. IN CASE OF CONFLICTING INFORMATION, WJ-SERIES DRAWINGS GOVERN.



 APEGN Certificate of Authorization CH2M HILL Canada Ltd. No. 1441 Expiry: April 30, 2007	B.M. ELEV.	 Frederickson Cooper ARCHITECTS	 EarthTech A 100 International Ltd. Company	ENGINEER'S SEAL	 THE CITY OF WINNIPEG WATER AND WASTE DEPARTMENT ENGINEERING DIVISION
	DESIGNED BY: MH DRAWN BY: CR SCALE: 1:100			CHECKED BY: AP APPROVED BY: AHL RELEASED FOR CONSTRUCTION BY: R. SOROKOWSKI	