

FIG. 1 FLOOR MOUNT

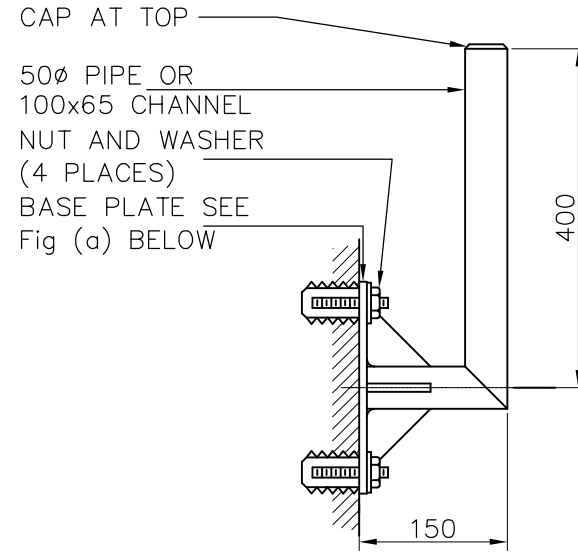


FIG. 2 WALL MOUNT

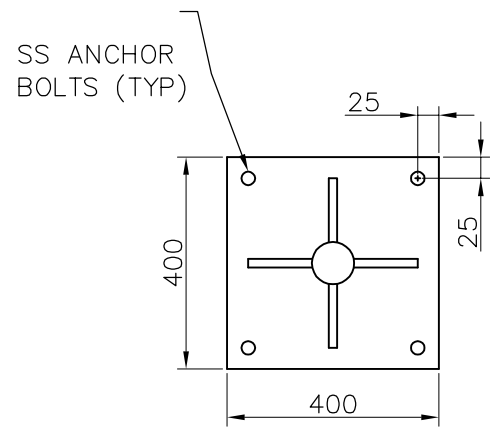


FIG. (a) MOUNTING PLATE

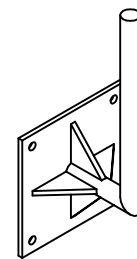


FIG. (b) WALL MOUNT EXTERNAL VIEW

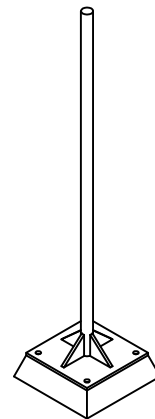


FIG. (c) FLOOR MOUNT EXTERNAL VIEW

**NOTES:**

- 1) PIPE AND MOUNTING PLATE COPPER FREE ALUMINUM, OR GALVANIZED STEEL.
- 2) TOP OF PIPE TO BE 1400 (NOMINAL) ABOVE SERVICE FLOOR.
- 3) GROUTING TO BE POURED ONCE FLOOR MOUNT STAND PLUMBED FASTENED IN PLACE.

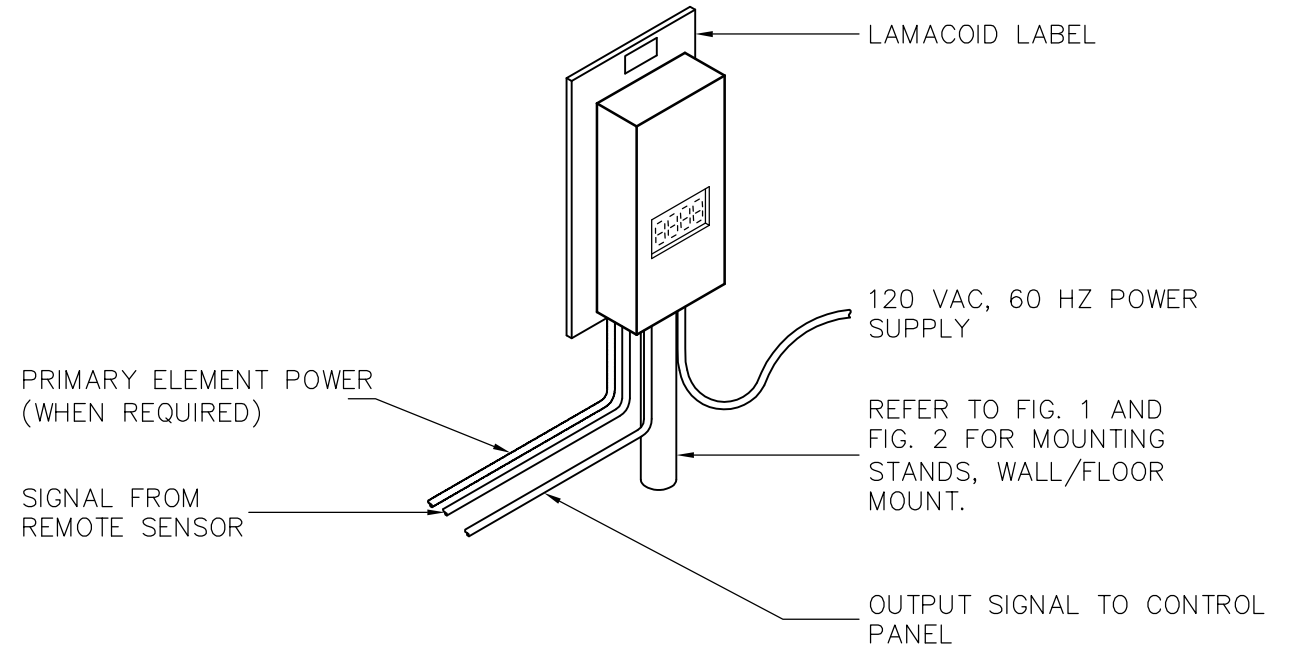


FIG. 3 REMOTE INDICATING TRANSMITTER (SELF POWERED)

REFER TO FIG. 1 AND FIG. 2 FOR MOUNTING STANDS, WALL/FLOOR MOUNT.

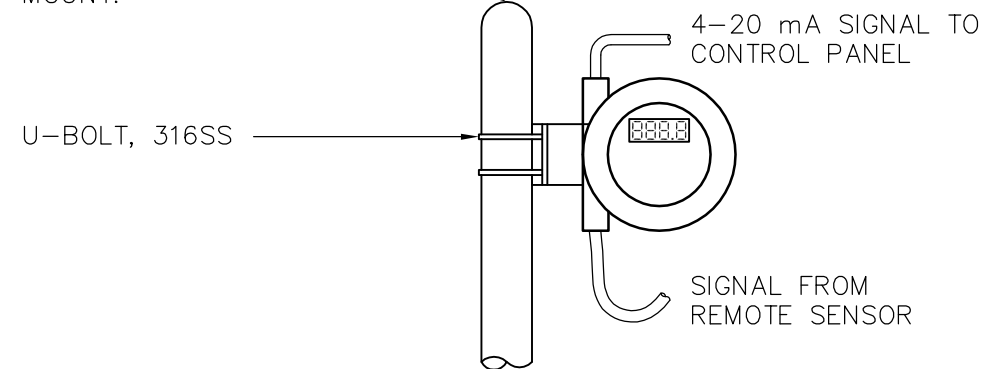


FIG. 4 REMOTE INDICATING TRANSMITTER (LOOP POWERED)

<p>Certificate of Authorization Earth Tech Canada Inc. No. 730 Expiry: April 30, 2007</p>	B.M. ELEV.	<p>Fredericson Cooper</p>	<p>A Division of U.S. Corp.</p>	ENGINEER'S SEAL	<p>THE CITY OF WINNIPEG WATER AND WASTE DEPARTMENT ENGINEERING DIVISION</p>	
				DESIGNED BY: NT		CHECKED BY: SWT
		DRAWN BY: GLG	APPROVED BY: AHL	2006/03/29		WATER TREATMENT PLANT MAIN BUILDING MECHANICAL AND ELECTRICAL
		SCALE: NTS	RELEASED FOR CONSTRUCTION BY: R. SOROKOWSKI	CONSULTANT DRAWING NO. WB-A0402		CITY FILE NUMBER: SHEET OF
	NO. REVISIONS	DATE	DATE	DATE	CITY DRAWING NUMBER: 1-0601B-D-A0402-001-04B	