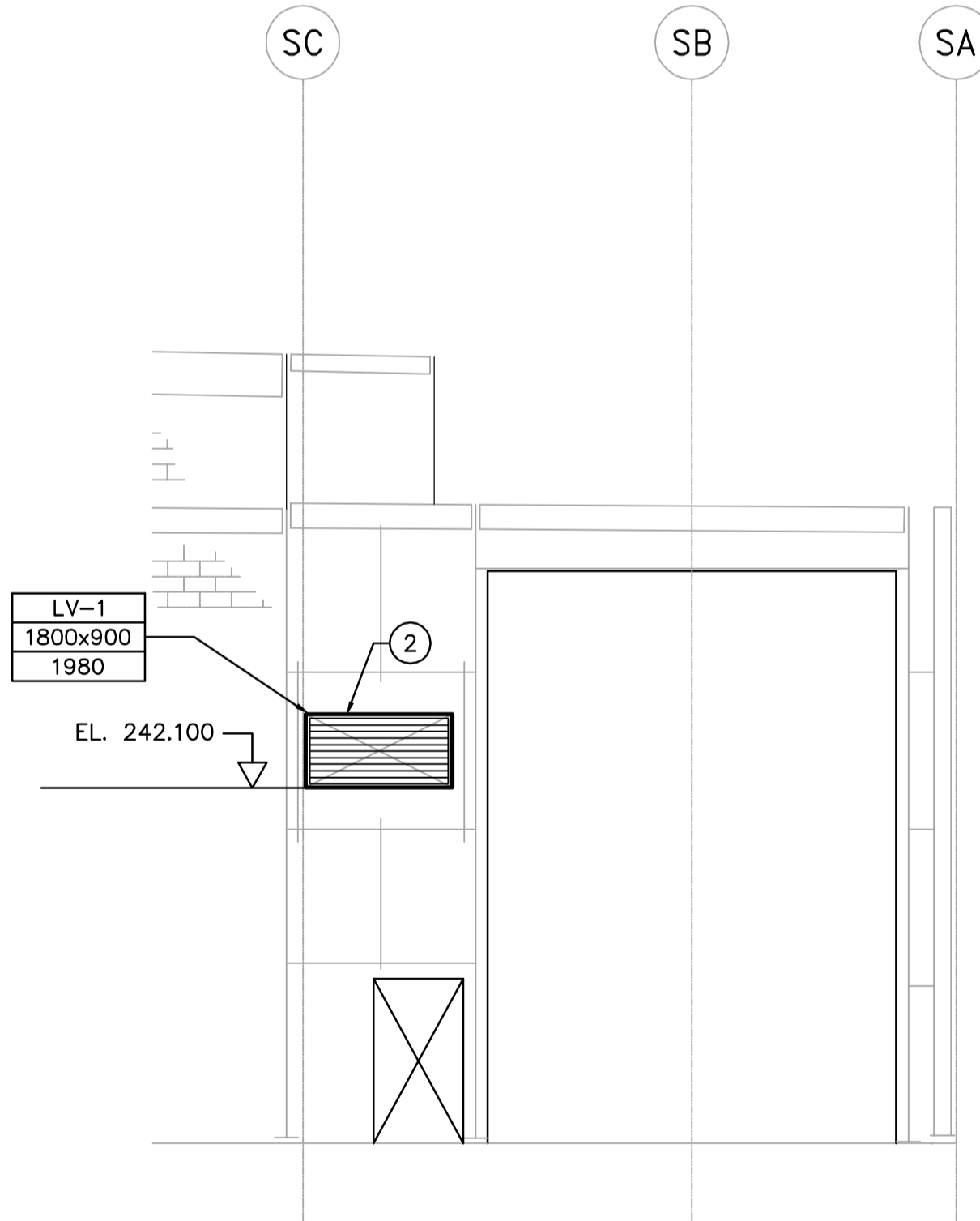
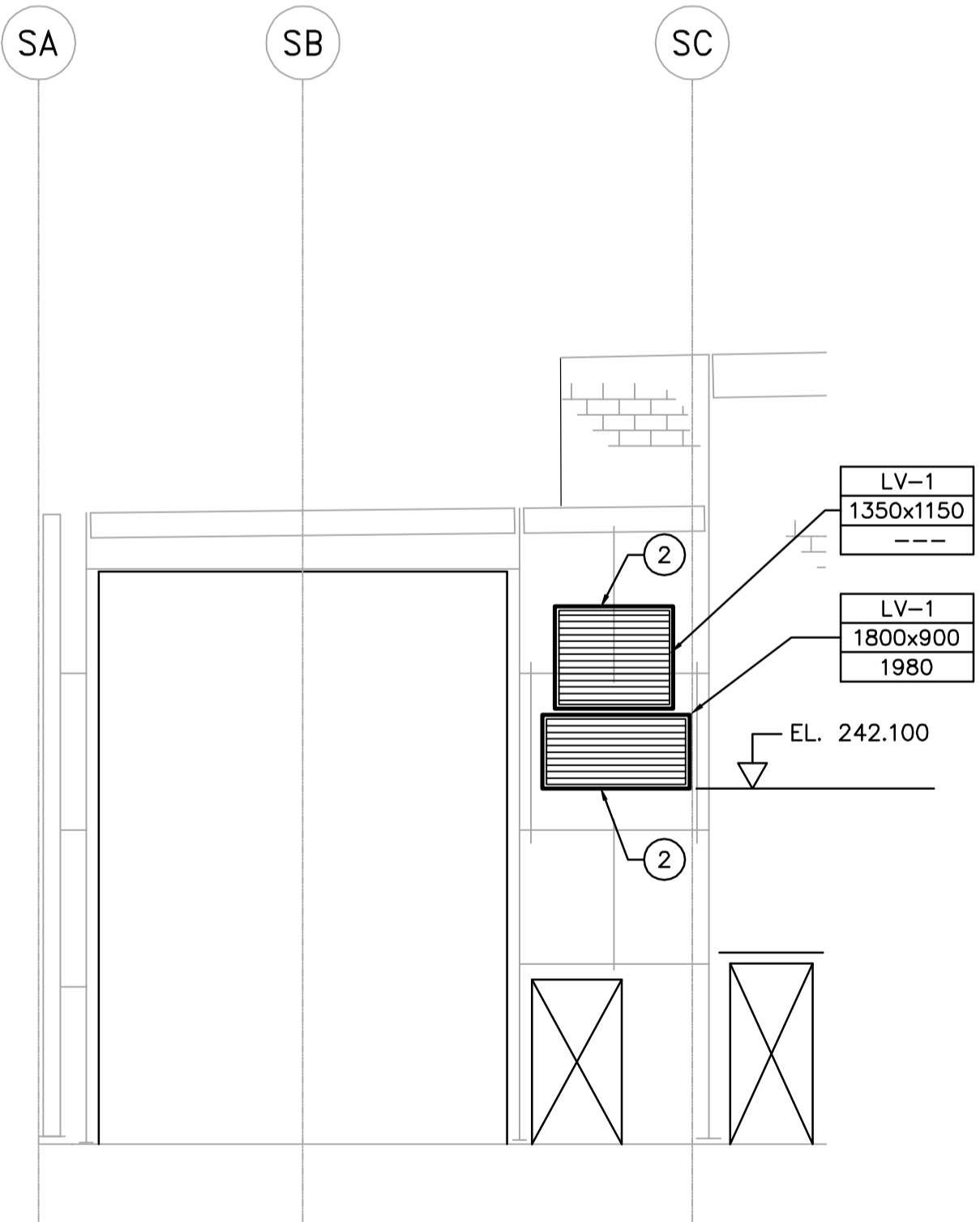


A ELEVATION ALONG GRID LINE SE
WS-H0301 1:75



B ELEVATION ALONG GRID LINE S6
WS-H0301 1:75



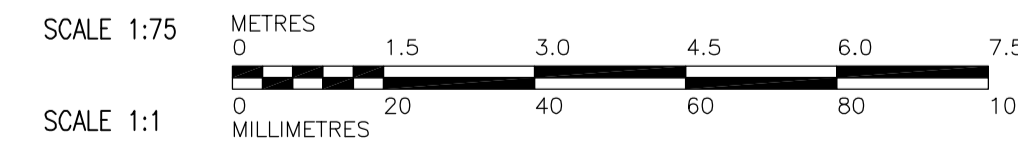
C ELEVATION ALONG GRID LINE S1
WS-H0301 1:75

DRAWING NOTES

- ① 65mm THICK INSULATED PANEL BEHIND CONTINUOUS LOUVER.
- ② HEAT TRACING TO BE INSTALLED ON BIRDSCREEN OF ALL AIR INTAKES.

GENERAL NOTES

- 1. COORDINATE WITH OTHER TRADES.
- 2. REFER TO ARCHITECTURAL DRAWINGS BUILDING ELEVATION WS-B0301, WS-B0302 FOR ADDITIONAL DETAILS.



APECA
Certificate of Authorization
Earth Tech Canada Inc.
No. 730 Expiry: April 30, 2007

B.M. ELEV.			
DESIGNED BY	LJW	CHECKED BY	PVL/AMA
DRAWN BY	LJW	APPROVED BY	AHL
SCALE:	1:75	RELEASED FOR CONSTRUCTION BY:	R. SOROKOWSKI
00 ISSUED FOR TENDER	07/01/31	DATE	DATE
NO. REVISIONS	DATE	BY	DATE

CH2MHILL
Frederickson Cooper ARCHITECTS

EarthTech
A Tech International Ltd. Company

ENGINEER'S SEAL
ORIGINAL SIGNED BY
A. M. AFTANAS
2007/01/31

CONSULTANT DRAWING NO.
WS-H0301

THE CITY OF WINNIPEG
WATER AND WASTE DEPARTMENT
ENGINEERING DIVISION

WATER TREATMENT PLANT
BULK CHEMICAL STORAGE
SODIUM HYPOCHLORITE AND CHEMICAL STORAGE BUILDING

MECHANICAL
LOUVER ELEVATION

CITY FILE NUMBER
SHEET OF
CITY DRAWING NUMBER
1-0601S-A-H0301-001-000