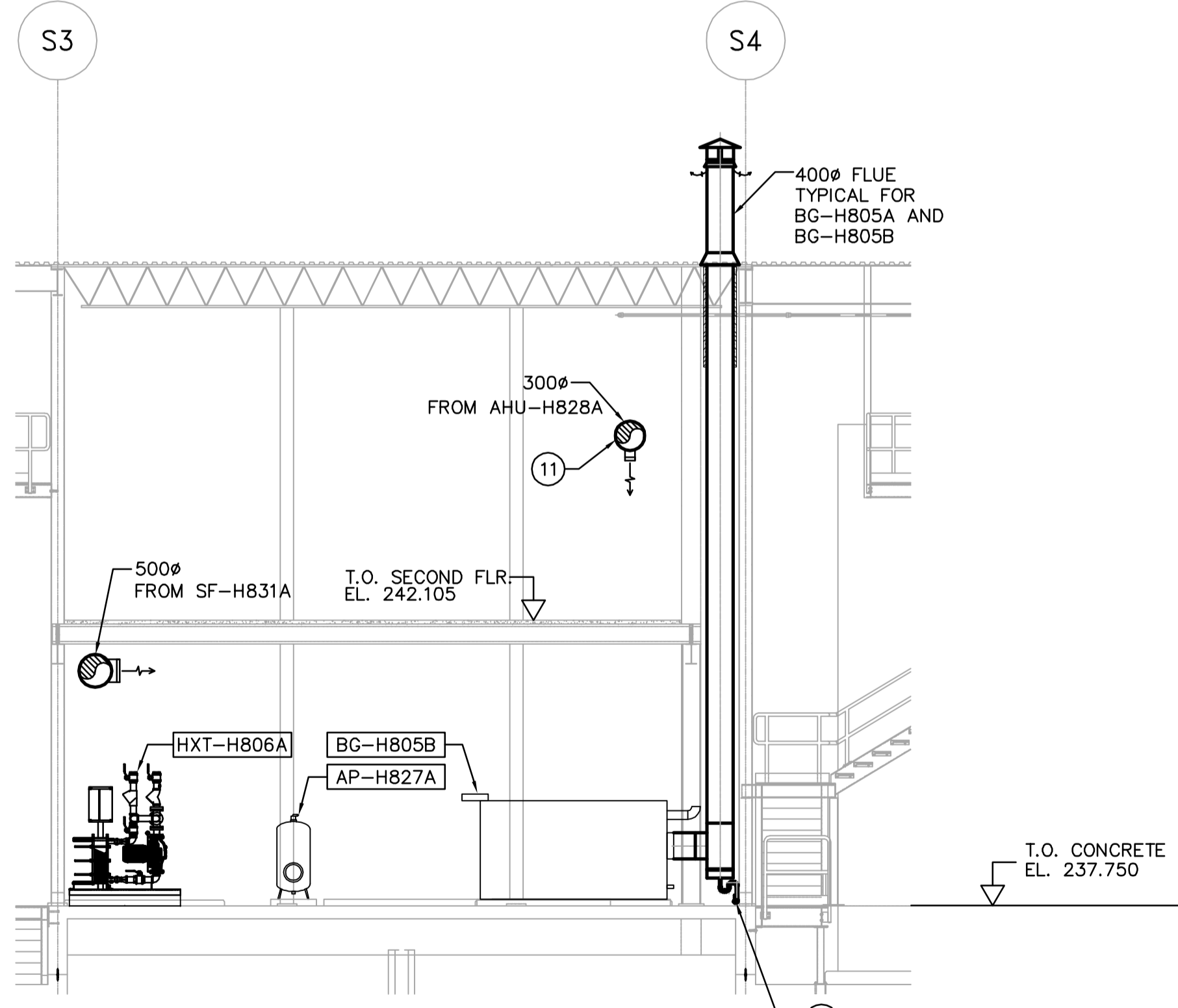
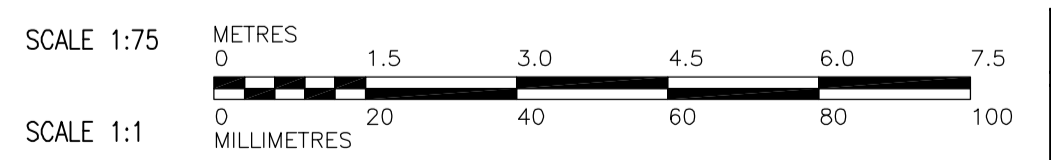


B SECTION
WS-H110 1:75



C SECTION
WS-H110 1:75



- DRAWING NOTES**
- 1 13mm SQUARE WIRE MESH WELDED TO END AND 25 ACOUSTIC LINER.
 - 2 SEE DRAWING WS-H0403 FOR ROUND ROOF VENT DETAIL 3.
 - 3 INSULATION FOR OUTSIDE AND SUPPLY AIR DUCT.
 - 4 EXHAUST FAN EF-HB29A LOCATED IN WASHROOM CEILING C/W MOTORIZED DAMPER MAD-HB29B AND 200x200 DUCT.
 - 5 12mm PIPING c/w BALL VALVE TO FLOOR DRAIN.
 - 6 600x600 RELIEF DUCT c/w MOTORIZED DAMPER & GOOSENECK ON ROOF. TERMINATE INTAKE OPENING APPROX. 600mm BELOW ROOF DECK. SEE DRAWING WS-H0402 GOOSENECK DETAIL 5.
 - 7 450x450 RELIEF DUCT c/w MOTORIZED DAMPER & GOOSENECK ON ROOF. TERMINATE INTAKE OPENING APPROX. 600mm BELOW ROOF DECK. SEE DRAWING WS-H0402 GOOSENECK DETAIL 5.
 - 8 CONDENSATE DRAIN DOWN TO MECHANICAL ROOM.
 - 9 REFRIGERATION LINES UP TO CONDENSING UNIT ON ROOF.
 - 10 REFRIGERATION PIPING AND ELECTRICAL WIRING DOWN THROUGH ROOF TO AIR HANDLING UNIT. LOCATE PIPE PENETRATIONS AWAY FROM ELECTRICAL PANELS BELOW. SEE DRAWING WS-H404 PIPING & CABLE THROUGH ROOF DETAIL 5.
 - 11 BOTTOM OF DUCT ELEVATION 2400 A.F.F.

- GENERAL NOTES**
1. COORDINATE WITH OTHER TRADES.

APECA
Certificate of Authorization
Earth Tech Canada Inc.
No. 730 Expiry: April 30, 2007

B.M. ELEV.	
DESIGNED BY	LJW
DRAWN BY	LJW
SCALE:	1:75
00 ISSUED FOR TENDER	07/01/31 LJW
NO. REVISIONS	DATE BY
	DATE 2006/09/12

CH2M HILL
Frederickson Cooper ARCHITECTS

EarthTech
A Tyco International Ltd. Company

DESIGNED BY	LJW	CHECKED BY	PVL/AMA
DRAWN BY	LJW	APPROVED BY	AHL
SCALE:	1:75	RELEASED FOR CONSTRUCTION BY:	R. SOROKOWSKI
		DATE	2007/01/31

ENGINEER'S SEAL
ORIGINAL SIGNED BY
A. M. AFTANAS
2007/01/31
CONSULTANT DRAWING NO.
WS-H0202

THE CITY OF WINNIPEG
WATER AND WASTE DEPARTMENT
ENGINEERING DIVISION

WATER TREATMENT PLANT
BULK CHEMICAL STORAGE
SODIUM HYPOCHLORITE AND CHEMICAL STORAGE BUILDING

Mechanical
SECTIONS B & C

CITY FILE NUMBER
SHEET OF
CITY DRAWING NUMBER
1-0601S-A-H0202-001-000