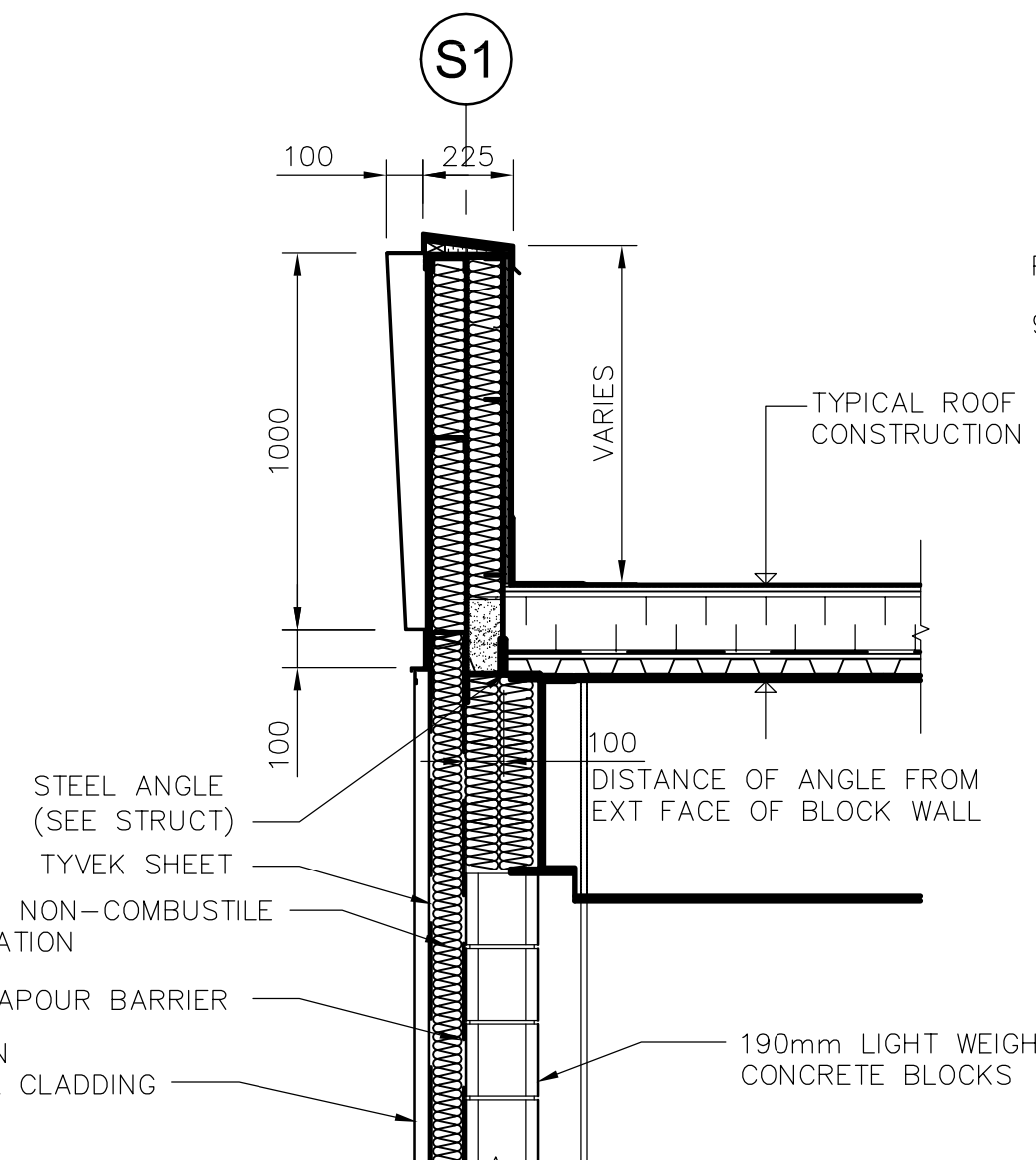
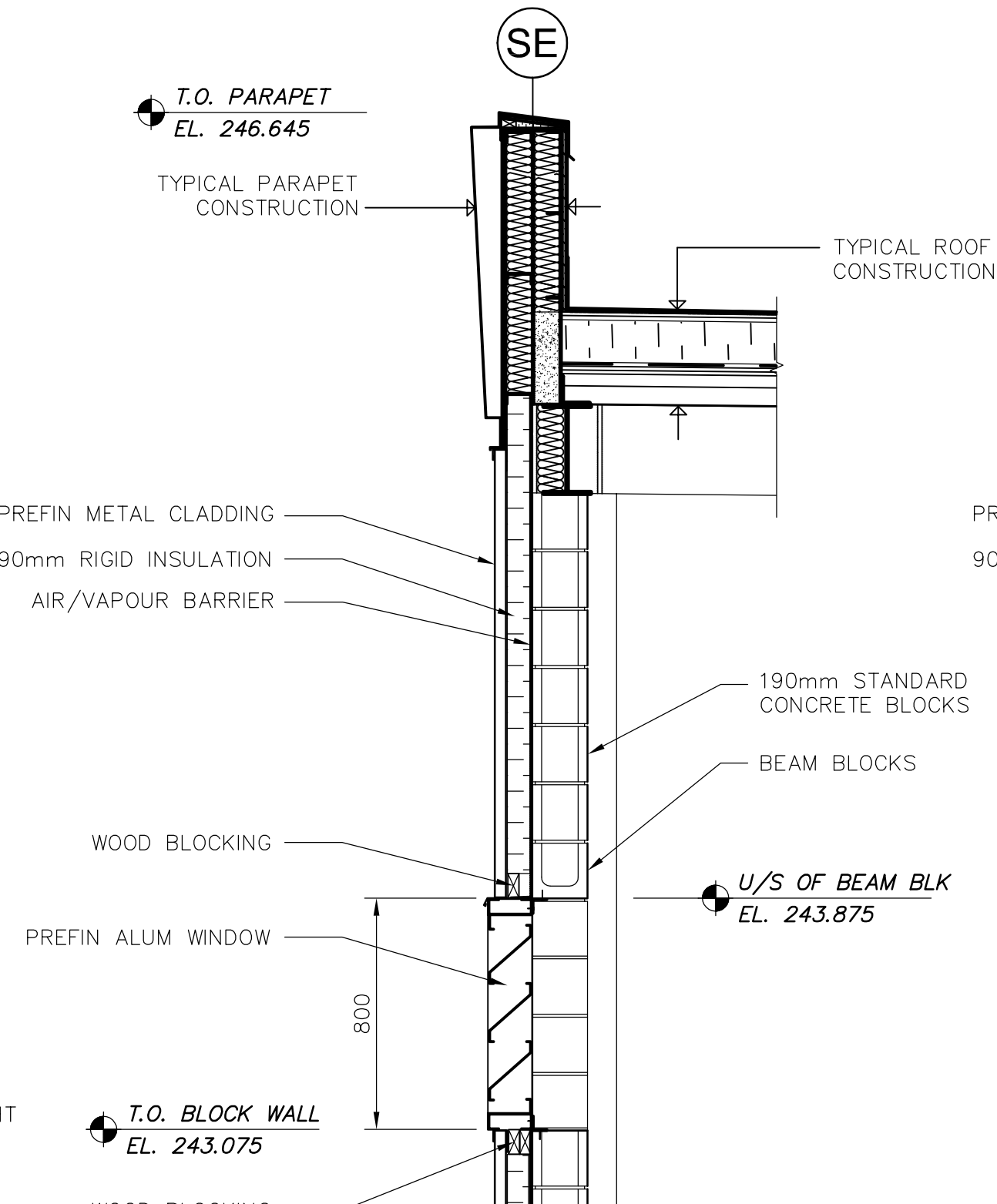


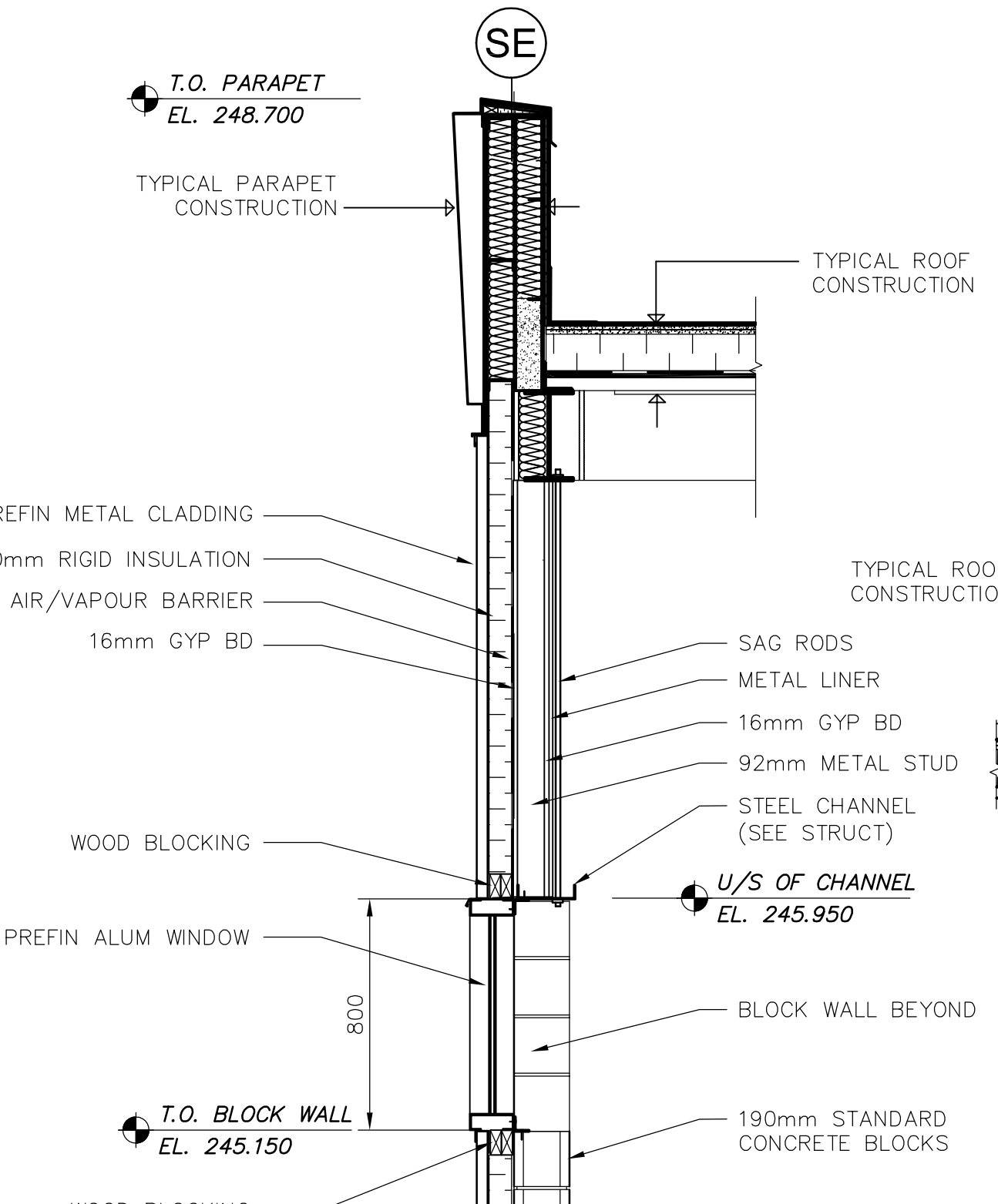
6 TYPICAL PARAPET DETAIL  
WS-B0203 1:20



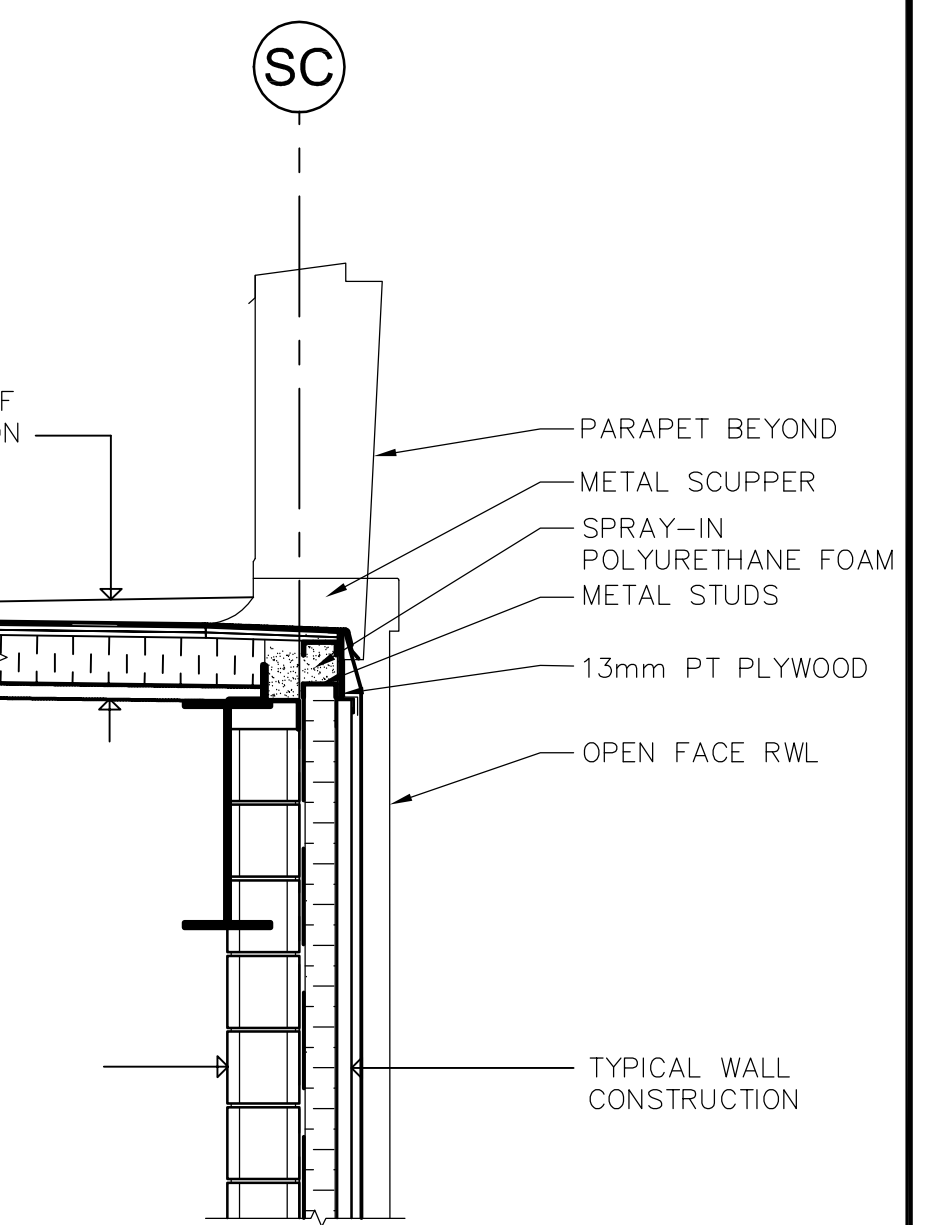
7 PARAPET DETAIL @ FIRE RATED WALL  
WS-B0203 1:20  
NOTE: PARAPET DIMENSIONS ARE TYPICAL.



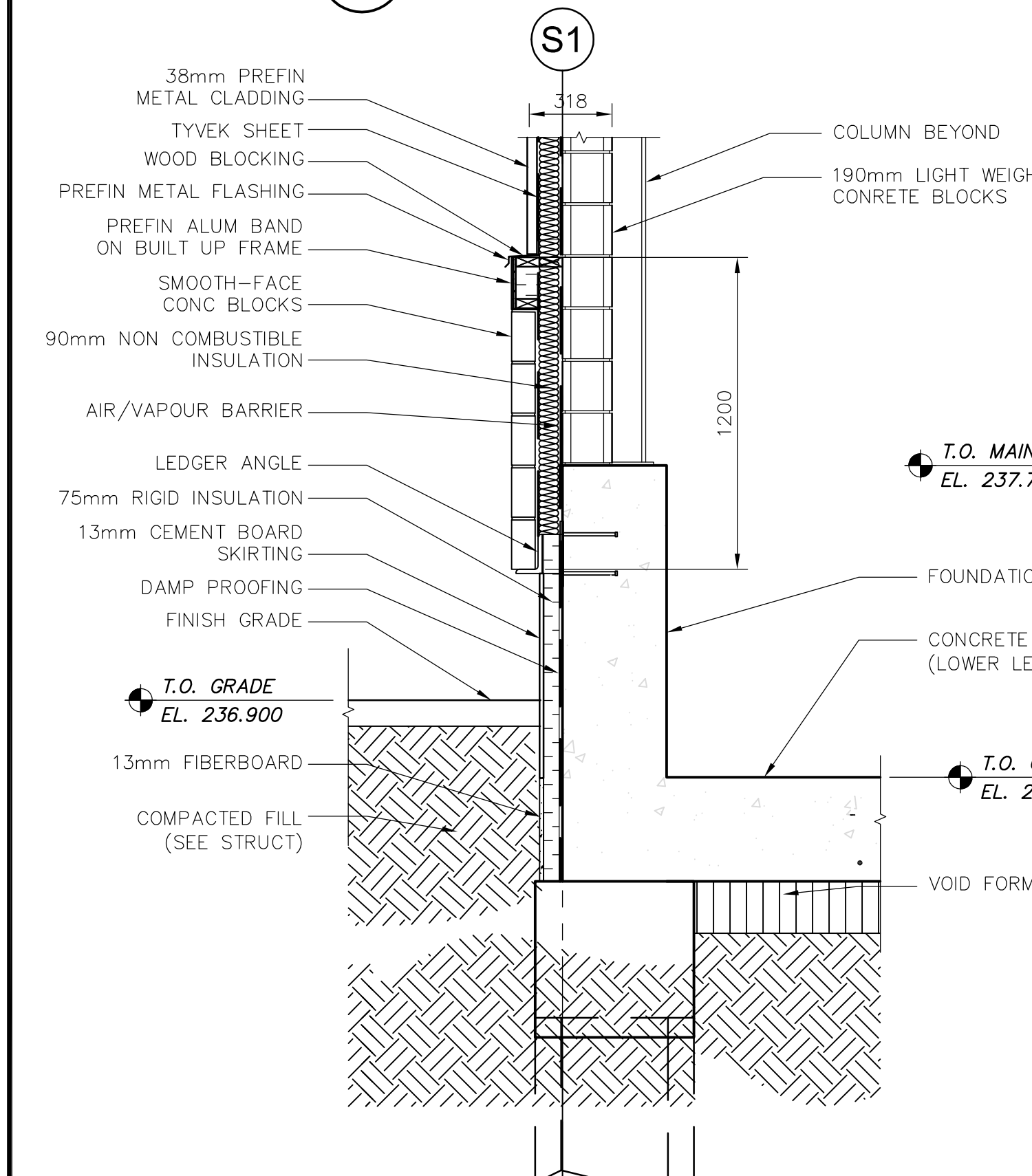
8 LOUVER DETAIL @ LOWER PARAPET  
WS-B0401 1:20



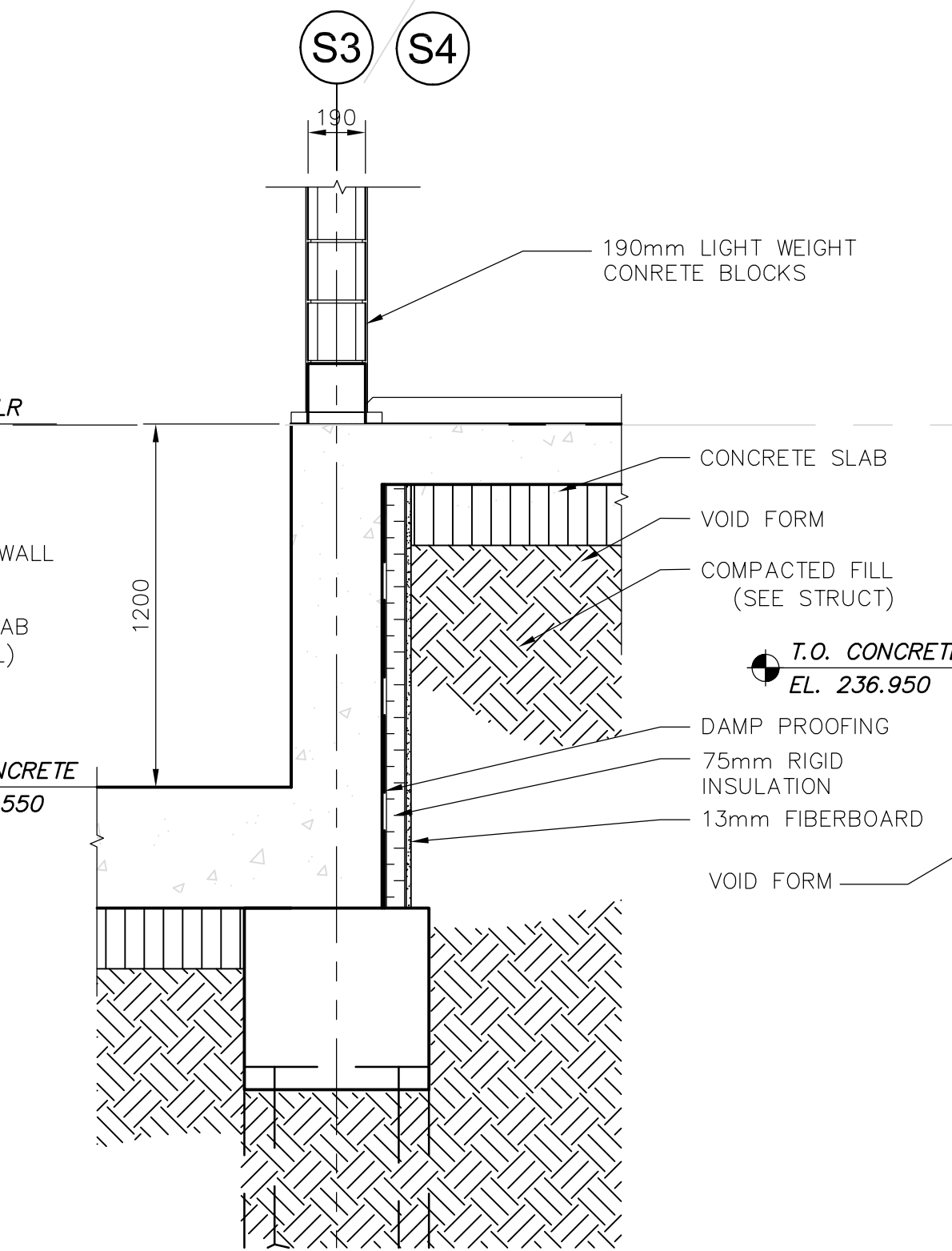
9 STUD WALL AND WINDOW DETAIL  
WS-B0401 1:20



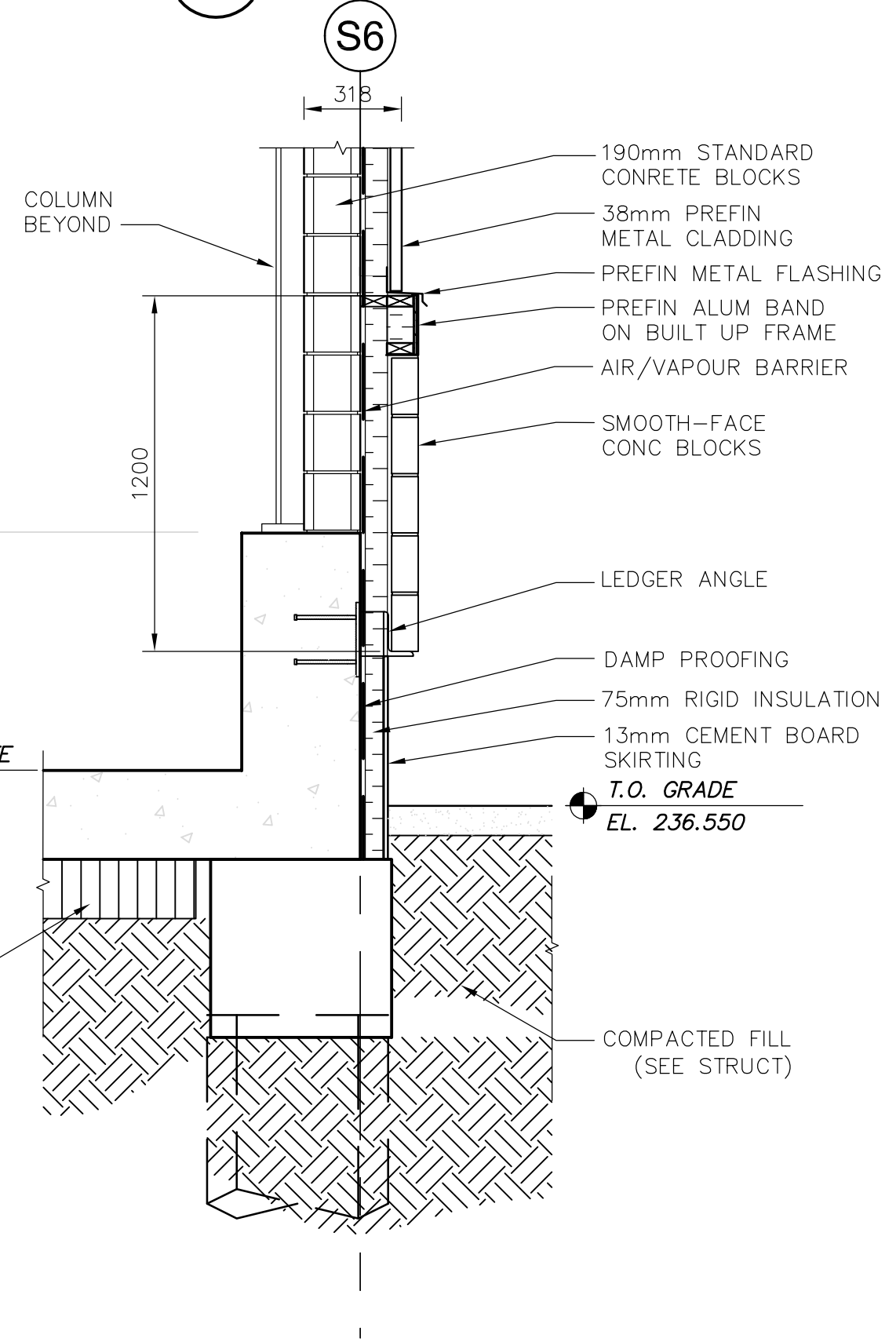
10 SCUPPER DETAIL  
WS-B0130 1:20



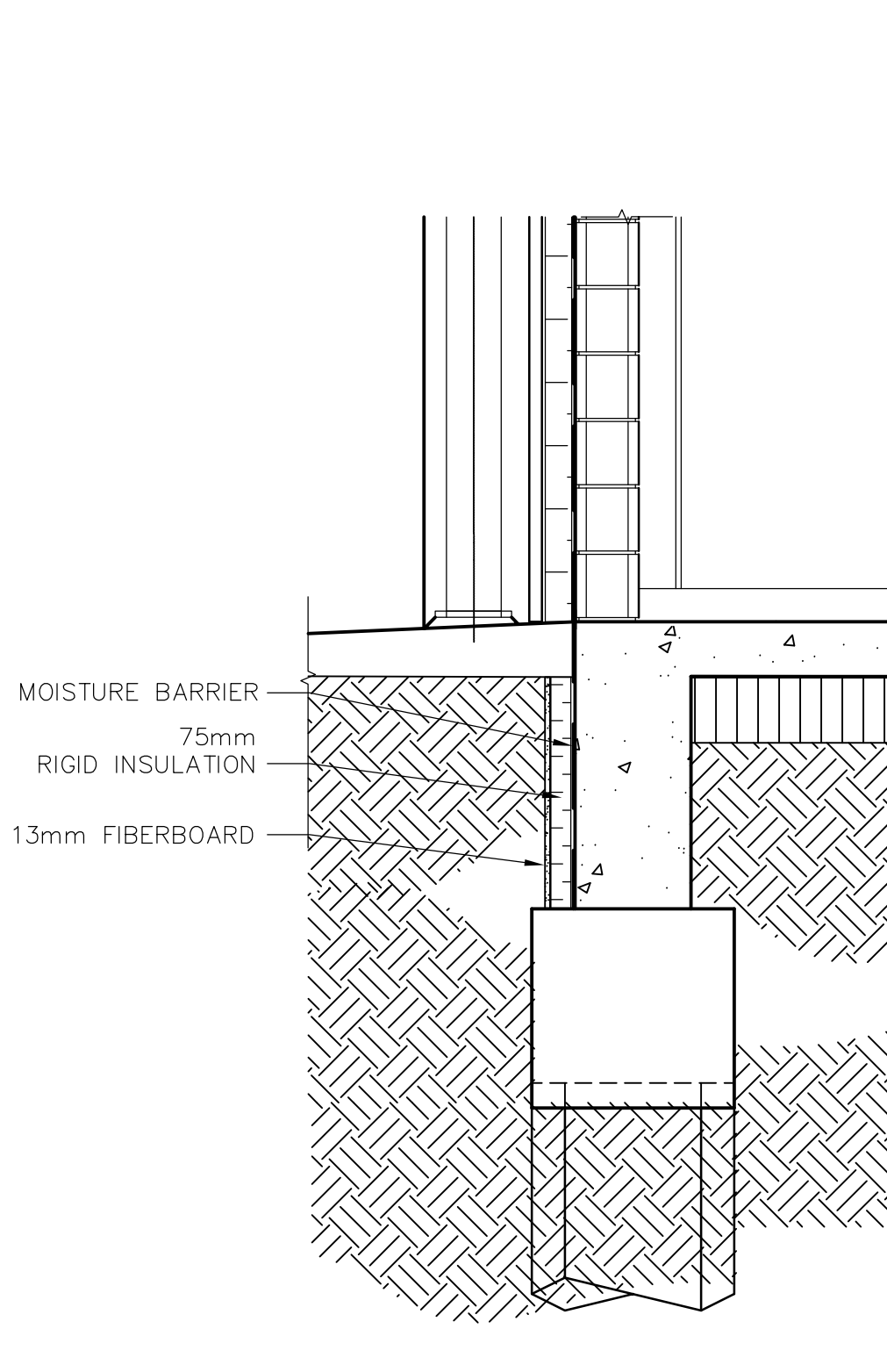
1 DETAIL  
WS-B0203 1:20



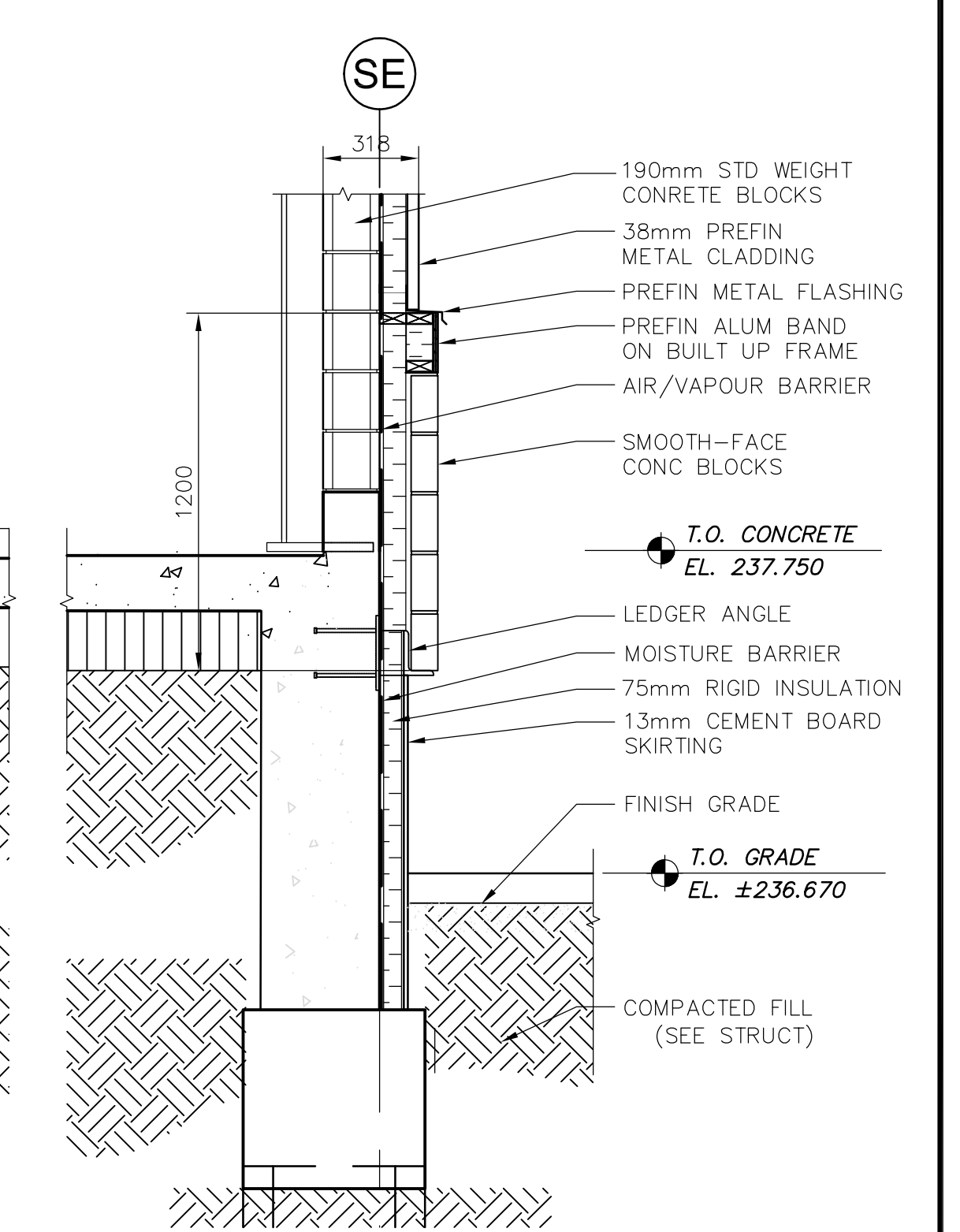
2 DETAIL  
WS-B0203 1:20



3 DETAIL  
WS-B0203 1:20



4 DETAIL  
WS-B0204 1:20



5 DETAIL  
WS-B0204 1:20



B.M. ELEV.			
DESIGNED BY	NC	CHECKED BY	LK
DRAWN BY	AL	APPROVED BY	AHL
SCALE:	AS SHOWN	RELEASED FOR CONSTRUCTION BY:	R. SOROKOWSKI
00 ISSUED FOR TENDER	07/01/31	AL	
NO. REVISIONS	DATE	BY	DATE
	2006/10/02		2007/01/31

**CH2MHILL**  
Frederickson Cooper ARCHITECTS

**EarthTech**  
A Tyco International Ltd. Company

ENGINEER'S SEAL  
ORIGINAL SIGNED BY  
NEIL COOPER  
2007/01/31  
CONSULTANT DRAWING NO.  
WS-B0401

**THE CITY OF WINNIPEG**  
WATER AND WASTE DEPARTMENT  
ENGINEERING DIVISION

WATER TREATMENT PLANT  
BULK CHEMICAL BUILDING  
SODIUM HYPOCHLORITE AND CHEMICAL STORAGE BUILDING

ARCHITECTURAL DETAILS

CITY FILE NUMBER  
SHEET OF  
CITY DRAWING NUMBER  
1-0601S-A-B0401-001-000