

**ROOM FINISH SCHEDULE**

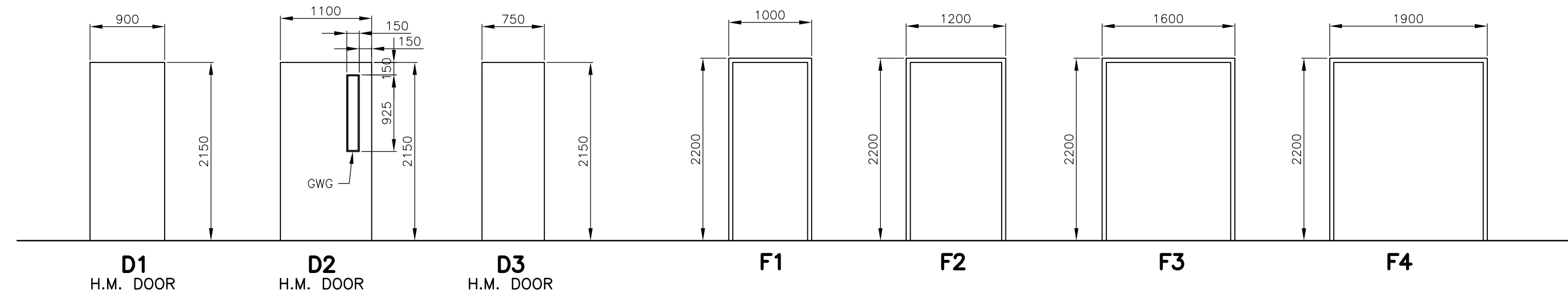
| ROOM No. | ROOM NAME                  | FLOOR |      |      | NORTH WALL            |      | SOUTH WALL            |      | EAST WALL             |      | WEST WALL             |      | CEILING  |      | HGT. AFF         | REMARKS |
|----------|----------------------------|-------|------|------|-----------------------|------|-----------------------|------|-----------------------|------|-----------------------|------|----------|------|------------------|---------|
|          |                            | MAT.  | FIN. | BASE | MAT.                  | FIN. | MAT.                  | FIN. | MAT.                  | FIN. | MAT.                  | FIN. | MAT.     | FIN. |                  |         |
| 101      | HYPOCHLORITE-BRINE STORAGE | CONC  | SEAL | SEAL | CONC BLK/<br>DRY WALL | PNT  | CONC BLK/<br>DRY WALL | PNT  | CONC BLK/<br>DRY WALL | PNT  | CONC BLK/<br>DRY WALL | PNT  | ST. DECK | PNT  | 11.750/<br>7.300 |         |
| 102      | ELECTRICAL ROOM            | CONC  | SEAL | SEAL | CONC BLK              | PNT  | CONC BLK              | PNT  | CONC BLK              | PNT  | CONC BLK              | PNT  | CONC     | PNT  | 3.795            |         |
| 103      | GENERATOR ROOM             | CONC  | SEAL | SEAL | CONC BLK              | PNT  | CONC BLK              | PNT  | CONC BLK              | PNT  | CONC BLK              | PNT  | CONC     | PNT  | 3.795            |         |
| 201      | MEZZANINE FLR              | CONC  | SEAL | SEAL | CONC BLK              | PNT  | -                     | -    | -                     | -    | CONC BLK              | PNT  | ST. DECK | PNT  | 3.200            |         |

**DOOR SCHEDULE**

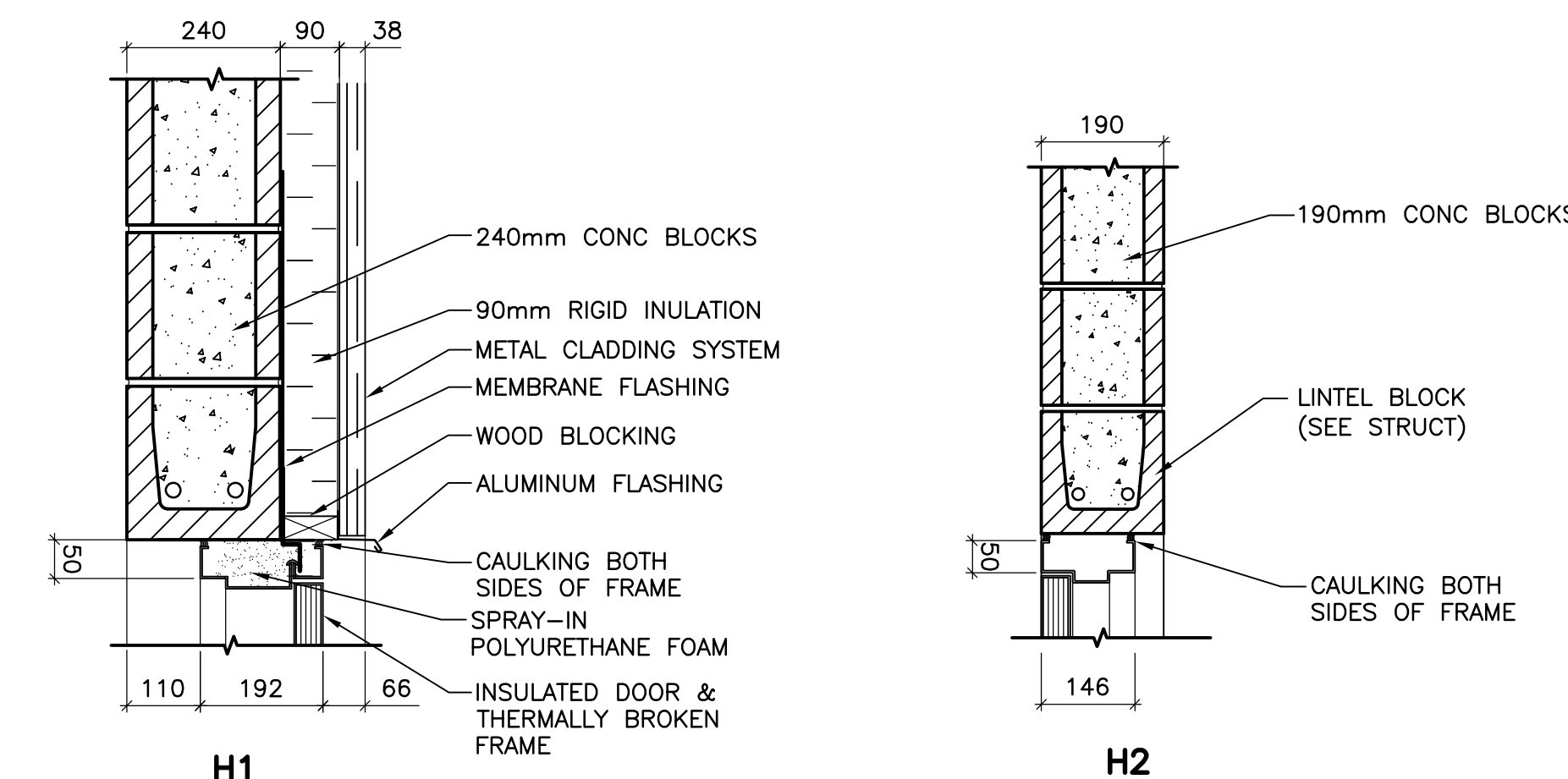
| MARK   | WIDTHxHEIGHTxTHICKNESS | DOOR |      |        |       | FRAME |        |      |      |      | HARDWARE GROUP | RATING (HR) | REMARKS |
|--------|------------------------|------|------|--------|-------|-------|--------|------|------|------|----------------|-------------|---------|
|        |                        | TYPE | MAT. | FINISH | GLASS | MAT.  | FINISH | TYPE | JAMB | HEAD |                |             |         |
| DR101A | 2-900x2150x45          | D1   | HM   | PNT    | -     | HM    | PNT    | F4   | J1   | H1   | 1              | -           |         |
| DR101B | 2-900x2150x45          | D1   | HM   | PNT    | -     | HM    | PNT    | F4   | J1   | H1   | 1              | -           |         |
| DR101C | 1100x2150x45           | D2   | HM   | PNT    | GWG   | HM    | PNT    | F2   | J1   | H1   | 3              | 0.75 FRR    |         |
| DR102A | 2-900x2150x45          | D1   | HM   | PNT    | -     | HM    | PNT    | F4   | J1   | H1   | 1              | -           |         |
| DR102B | 900x2150x45            | D1   | HM   | PNT    | -     | HM    | PNT    | F1   | J2   | H2   | 2              | 1.5 FRR     |         |
| DR103  | 2-750x2150x45          | D3   | HM   | PNT    | -     | HM    | PNT    | F3   | J2   | H2   | 1              | 1.5 FRR     |         |

**ABBREVIATIONS:**

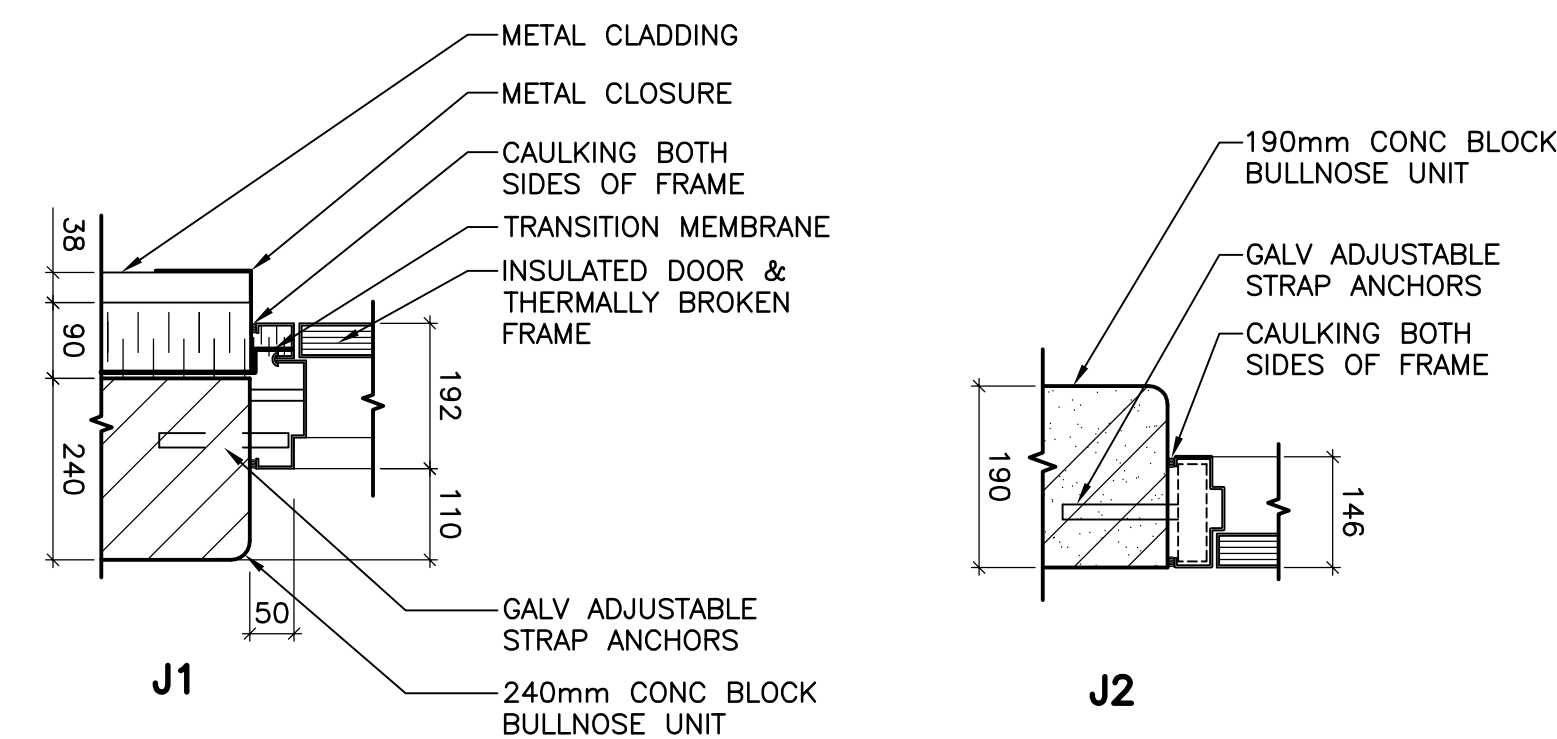
ALUM = ALUMINIUM  
 FR = FIRE RATING  
 GYP BD = GYPSUM BOARD  
 GWG = GEORGIAN WIRED GLASS  
 HM = HOLLOW METAL  
 MTL = METAL  
 N/A = NOT APPLICABLE  
 PNT = PAINTED  
 PREFIN = PREFINISHED  
 STL = STEEL  
 TSG = TEMPERED SAFETY GLASS



**2 DOOR/FRAME DETAILS**  
WJ-B0501 1:10



**1 JAMB/HEAD DETAILS**  
WJ-B0501 1:10



**HARDWARE SCHEDULE**

|  |                      |                    |     |
|--|----------------------|--------------------|-----|
| <b>GROUP 1</b> D101A, D101B, D102A & D103 (DOUBLE DOORS) |                      |                    |     |
| 6 BUTT HINGES  | TA 314 115x100mm NRP | McKINNEY           | 26D |
| 1 LOCKSET  | AU5407 x ASA         | YALE (W/CONST CYL) | 26D |
| 2 FLUSHBOLTS   | F65                  | STANDARD METAL     | 26D |
| 1 WEATHERSTRIP   | W29 1/6 + 2/7        | KN CROWDER         | CA  |
| 2 DOOR SWEEP   | W245 - 900 & 600mm   | KN CROWDER         | CA  |
| 1 THRESHOLD  | CT11 - 1800          | KN CROWDER         | CA  |
| 1 ASTRAGAL   | W40P - 2100          | KN CROWDER         | CA  |
| 1 KICK PLATE   | K10C                 | SSTEEL             | CA  |
| <b>GROUP 2</b> D102B & D103 (RATED)                      |                      |                    |     |
| 3 BUTT HINGES  | TA 314 115x100mm NRP | McKINNEY           | 26D |
| 1 DOOR SWEEP   | W24S - 900mm         | KN CROWDER         | CA  |
| 1 THRESHOLD  | CT11 - 900mm         | KN CROWDER         | CA  |
| 1 CLOSER   | 4040                 | LCN                | 689 |
| 1 WALL STOP  | S123                 | STANDARD METAL     | 26D |
| 1 KICK PLATE   | K10C                 | SSTEEL             | CA  |
| <b>GROUP 3</b> D101C (RATED WITH PASSAGE SET)            |                      |                    |     |
| 3 BUTT HINGES  | TA 314 115x100mm NRP | McKINNEY           | 26D |
| 1 DOOR SWEEP   | W24S - 900mm         | KN CROWDER         | CA  |
| 1 THRESHOLD  | CT11 - 900mm         | KN CROWDER         | CA  |
| 1 CLOSER   | 4040                 | LCN                | 689 |
| 1 WALL STOP  | S123                 | STANDARD METAL     | 26D |
| 1 KICK PLATE   | K10C                 | SSTEEL             | CA  |
| 1 PASSAGE SET  |                      |                    |     |

**BUILDING CODE ANALYSIS**

Winnipeg Water Treatment Plant  
 Hypochlorite Building  
 Winnipeg, Manitoba

**Building Code Analysis**

**1.0 General**

.1 The building is a One (1) Storey (with mezzanine), non-combustible building utilized for the storage of non-combustible chemicals (which are for use in the nearby treatment plant). The building is located north of the main water treatment plant. The building is joined to the "Bulk Chemical Building" to the east by means of a bridge which include a one-hour separation at each end.

**2.0 Description**

- ◆ Storeys: One (1) with mezzanine
- ◆ Building Area: 551.7 m2 (5,936.3 sf)
- ◆ Sprinklered: No
- ◆ Occupancy Type: Group F, Division 3
- ◆ Occupant Load: None (0) (intermittent use only)
- ◆ Streets: One (1)

**3.0 Regulation**

.1 This project may be regulated under **3.2.2.80., Group F, Division 3, One Storey**

**.2 Classification**

- .1 Requirements:
- ◆ ≤ 5,600 m2 (60,256 sf) Building Area (Conforms @ 551.7 m2)
  - ◆ One (1) Stories (Conforms)
  - ◆ Unsprinklered (Conforms)
  - ◆ Type "F-3" Occupancy (Conforms)
  - ◆ One (1) Street (Conforms)

.2 Stipulations:

- ◆ May be Combustible or Non-combustible construction
- ◆ Floor Assemblies - 45 minutes FRR. (Conforms)
- ◆ Load bearing Elements - 45 minutes FRR. (Conforms)

**4.0 General Conformance**

**.1 3.4.2.4 - Travel Distance**

.1 Maximum travel distance to an exit is 30 m (98') - Conforms (maximum travel of 20.5 m (67')).

**.2 3.4.2.1 - Number of Exits**

.1 Conforms (two (2) required - four (4) provided).

**.3 3.2.3.1 - Limiting Distance**

.1 To the east, building has a 0.0m limiting distance to a virtual property line at the east face of the adjacent Hypochlorite building. As such, the west face of the Hypochlorite building is required to be rated with a 1 HR fire resistance rating (conforms).

**.4 Fire Rating Separations**

.1 Generator Room (RN 103) is rated with a 1 HR FRR.



| NO. | REVISIONS         | DATE     | BY |
|-----|-------------------|----------|----|
| 00  | ISSUED FOR TENDER | 07/01/31 | AL |

|                                |            |                                 |               |
|--------------------------------|------------|---------------------------------|---------------|
| <b>CH2MHILL</b>                |            | <b>EarthTech</b>                |               |
| Frederickson Cooper ARCHITECTS |            | A Top International LLC Company |               |
| DESIGNED BY                    | NC         | CHECKED BY                      | AL            |
| DRAWN BY                       | AL         | APPROVED BY                     | AHL           |
| SCALE:                         | AS SHOWN   | RELEASED FOR CONSTRUCTION BY:   | R. SOROKOWSKI |
| DATE                           | 2006/09/01 | DATE                            | 2007/01/31    |

|                        |                    |
|------------------------|--------------------|
| ENGINEER'S SEAL        | ORIGINAL SIGNED BY |
|                        | NEIL COOPER        |
|                        | 2007/01/31         |
| CONSULTANT DRAWING NO. | WJ-B0501           |

**THE CITY OF WINNIPEG**  
 WATER AND WASTE DEPARTMENT  
 ENGINEERING DIVISION

Winnipeg WATER TREATMENT PLANT  
 SODIUM HYPOCHLORITE GENERATION BUILDING  
 SODIUM HYPOCHLORITE AND CHEMICAL STORAGE BUILDING

ARCHITECTURAL SCHEDULES AND CODE ANALYSIS

CITY FILE NUMBER  
 SHEET OF  
 CITY DRAWING NUMBER  
 1-0601J-A-B0501-001-000