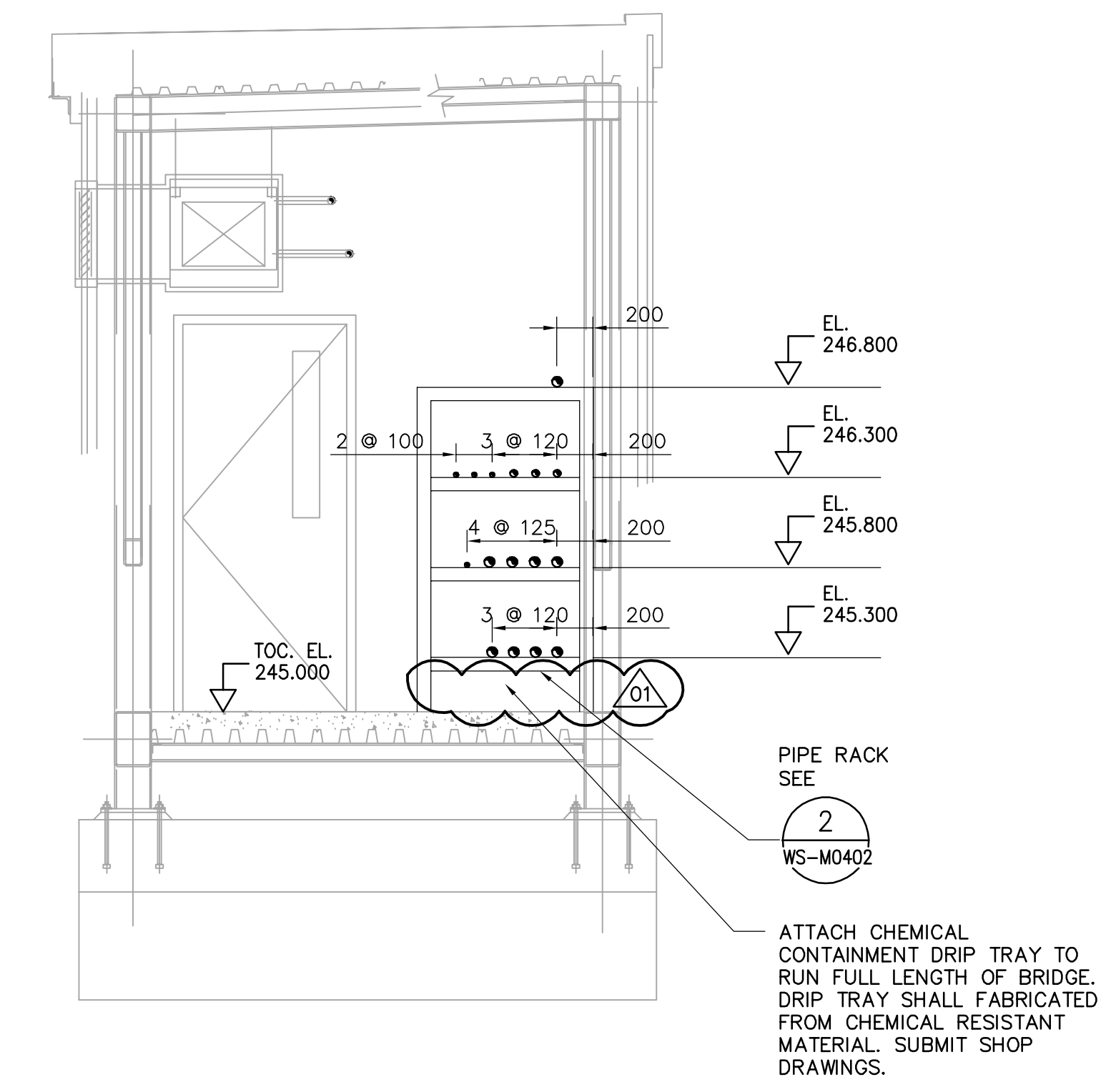


FLOOR PLAN  
1:30



A SECTION  
1:30

ATTACH CHEMICAL CONTAINMENT DRIP TRAY TO RUN FULL LENGTH OF BRIDGE. DRIP TRAY SHALL FABRICATED FROM CHEMICAL RESISTANT MATERIAL. SUBMIT SHOP DRAWINGS.

- NOTES:**
1. PROVIDE PROCESS PIPES BETWEEN MAIN WTP AND CHEMICAL BUILDING THROUGH THE BRIDGE AS SHOWN ON ABOVE SKETCH C/W PIPE SUPPORTS.
  2. PROVIDE PROCESS PIPE CONNECTION AT CHEMICAL BUILDING AND WTP BUILDING INTERFACE.

<p><b>APEGN</b> Certificate of Authorization CH2M HILL Canada Ltd. No. 1441 Expiry: April 30, 2007</p>	<p>Frederickson Cooper ARCHITECTS</p>	<p>EarthTech A 100 International Ltd. Company</p>	<p>ENGINEER'S SEAL</p> <p>ORIGINAL SIGNED BY P. WOBMA 2007/03/12</p>	<p><b>THE CITY OF WINNIPEG</b> WATER AND WASTE DEPARTMENT ENGINEERING DIVISION</p> <p>WATER TREATMENT PLANT SODIUM HYPOCHLORITE BUILDING SODIUM HYPOCHLORITE AND CHEMICAL STORAGE BUILDINGS</p> <p>PROCESS MECHANICAL SKYWAY BRIDGE DETAILS</p>	<p>CITY FILE NUMBER</p>
	<p>DESIGNED BY: KS</p> <p>CHECKED BY: NN</p>	<p>APPROVED BY: AHL</p>	<p>SHEET OF</p>		
	<p>DRAWN BY: YFS</p> <p>SCALE: 1:30</p>	<p>RELEASED FOR CONSTRUCTION BY: R. SOROKOWSKI</p>	<p>CITY DRAWING NUMBER</p>		
	<p>NO. REVISIONS</p> <p>DATE BY</p> <p>DATE 2007/03/12</p>	<p>DATE 2007/03/12</p>	<p>1-0601J-A-M0403-001-010</p>		