

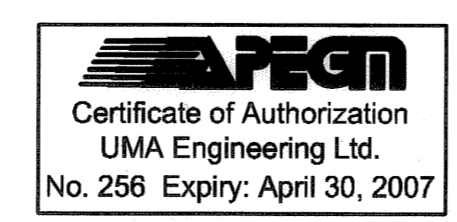
**2134 RCP WTP OVERFLOW
PIPING COORDINATE GEOMETRY DATA:**

ITEM:	NORTHING	EASTING
PI CONNECT TO EX 1500 OVERFLOW	5524029.771	647723.539
PI 2134 45° HORIZONTAL BEND	5524030.551	647726.258
PI 2134 45° HORIZONTAL BEND	5524034.903	647728.669
PI 2134 45° HORIZONTAL BEND	5524040.177	647747.052
PI 2134 45° VERTICAL BEND	5524030.514	647764.489
PI 2134 45° VERTICAL BEND	5524028.430	647768.250
PI 2134 64°39' COMPOUND BEND	5524021.239	647781.228
PI 2134 45° VERTICAL BEND	5524022.970	647785.164
PI 762 CONNECTION AND MANHOLE	5524036.998	647817.060
PI 2134 34°56' BEND	5524037.839	647818.973
PI 762 CONNECTION (SUPERNATANT)	5524061.189	647833.185
PI 2134 TEE	5524065.228	647835.643
PI 2134 CONNECTION TO DAF OVERFLOW	5524060.825	647842.878
PI 2134 45° 36' BEND	5524092.230	647852.077
PI 2134 45° BEND	5524100.685	647888.530
2134 CONNECTION TO WTP OVERFLOW	5524099.955	647889.702

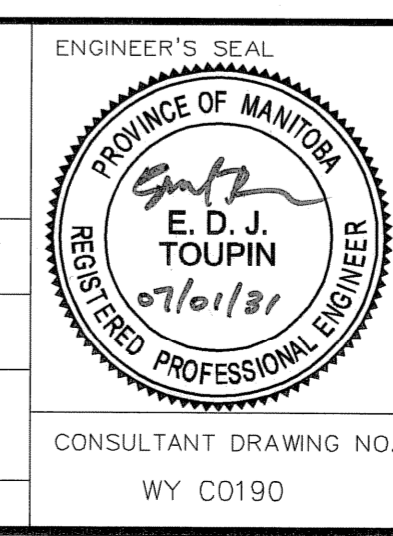
SITE CONSTRUCTION NOTES:
 1. MAINTAIN UNRESTRICTED ROAD ACCESS TO THE DEACON BOOSTER PUMPING STATION AND CHEMICAL FEED FACILITY.

BENCHMARK NOTES:
 DRAWING COORDINATES ARE UTM NAD83 - SCALE FACTOR 0.99983

B.M. No.	NORTHING	EASTING	ELEVATION
PILE 136	5523873.734	647764.406	236.242
PILE 133	5523256.606	647782.387	236.056



B.M. ELEV.					
UMA AECOM					
© 2005 UMA ENGINEERING LTD. ALL RIGHTS RESERVED.					
DESIGNED BY	EDT	CHECKED BY	<i>[Signature]</i>		
DRAWN BY	WJd	APPROVED BY	<i>[Signature]</i>		
HOR. SCALE: 1:500		RELEASED FOR CONSTRUCTION BY:			
VERTICAL SCALE: -		DATE			
ISSUED FOR TENDER	07/01/26	WJd	DATE	2006/12/06	DATE
NO. REVISIONS					



THE CITY OF WINNIPEG
 WATER AND WASTE DEPARTMENT
 ENGINEERING DIVISION

WINNIPEG WATER TREATMENT PROGRAM
 WTP OVERFLOW SUPERNATANT LINE

CIVIL
 WATER TREATMENT PLANT OVERFLOW PIPING
 GENERAL PLAN

CITY FILE NUMBER	
SHEET 1 OF 1	
CITY DRAWING NUMBER	1-0601Y-C-00190-001-00D