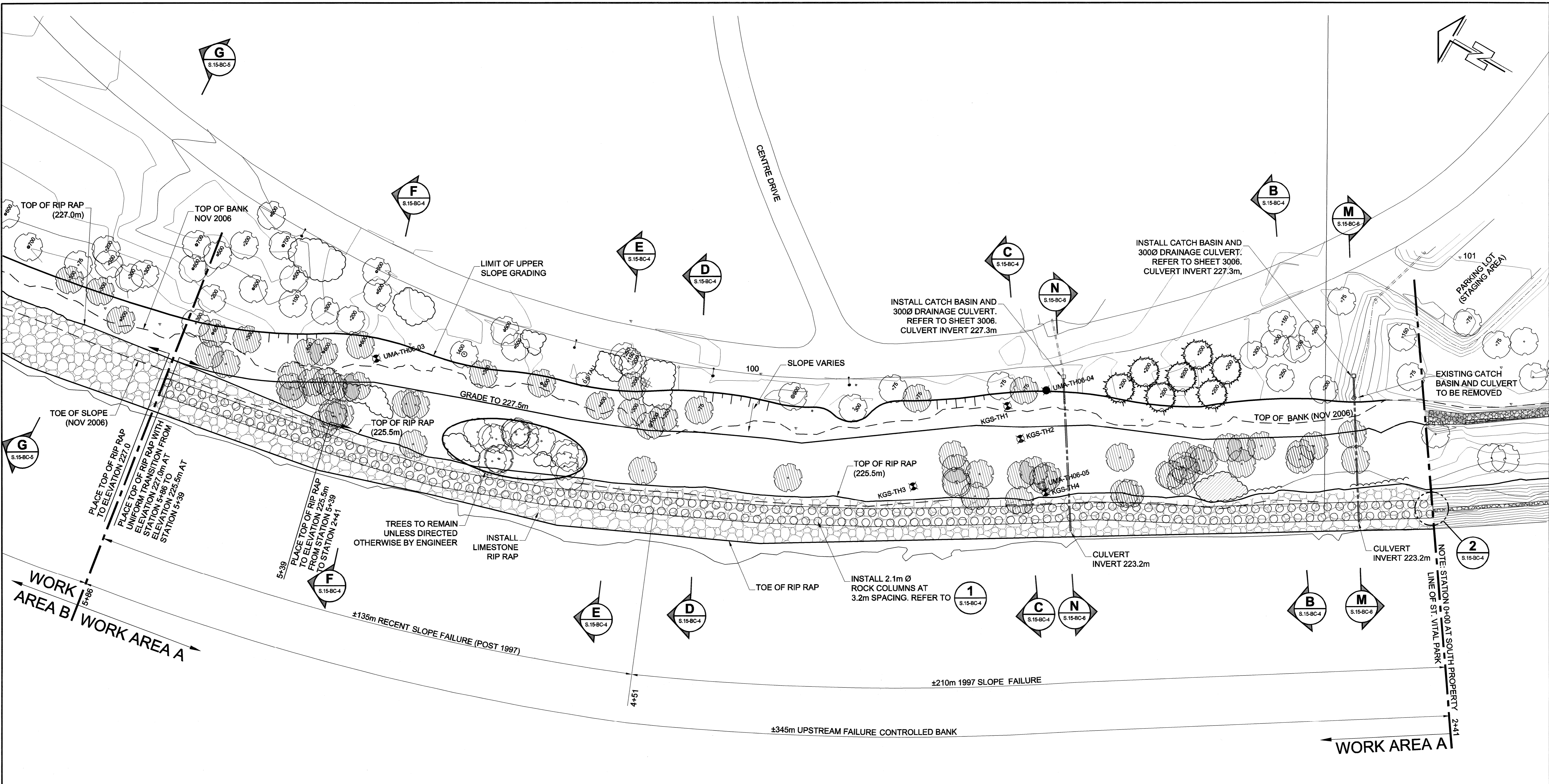


D SIZE 22" x 34" (559mm x 864mm)

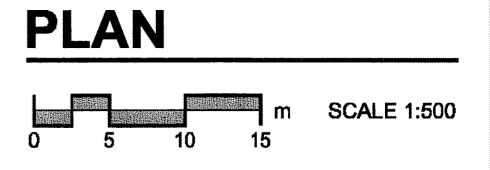
PLOT: 06/12/19 11:31:54 AM

UMA FILE NAME: 0265-390-00_02-B-1002_RX.dwg Saved By: jmborg



- LEGEND**
- APPROXIMATE TREE DIAMETER (mm)
 - TREE TO BE REMOVED
 - BUSH TO BE REMOVED

POINT	NORTHING	EASTING	ELEVATION
100	5521133.01	633315.41	230.60
101	5520987.24	633435.17	230.74



BID OPPORTUNITY 779-2006

LOCATION APPROVED
UNDERGROUND STRUCTURES

SUPR. LIG STRUCTURES COMMITTEE DATE

NOTE:
LOCATION OF UNDERGROUND STRUCTURES AS SHOWN ARE BASED ON THE BEST INFORMATION AVAILABLE. BUT NO GUARANTEE IS GIVEN THAT ALL EXISTING UTILITIES ARE SHOWN OR THAT THE GIVEN LOCATIONS ARE EXACT. CONFIRMATION OF EXISTENCE AND EXACT LOCATION OF ALL SERVICES MUST BE OBTAINED FROM THE INDIVIDUAL UTILITIES BEFORE PROCEEDING WITH CONSTRUCTION.

NO.	REVISIONS	YYMMDD	BY
0	ISSUED FOR CONSTRUCTION	06/12/19	LJV

UMA | AECOM

© 2006 UMA ENGINEERING LTD. ALL RIGHTS RESERVED.

DESIGNED BY	NJF	CHECKED BY	<i>[Signature]</i>
DRAWN BY	LJV	APPROVED BY	<i>[Signature]</i>
HOR. SCALE	1:500	RELEASED FOR CONSTRUCTION	NA
VERT. SCALE	NA	DATE	06/12/19

PROFESSIONAL'S SEAL

PROVINCE OF MANITOBA

FERREIRA
Member
22892

REGISTERED PROFESSIONAL ENGINEER

CONSULTANT DRAWING NO. 002
0265-390-00

THE CITY OF WINNIPEG
PUBLIC WORKS DEPARTMENT

St. Vital Park
Riverbank Stabilization Works

WORK AREA A - PLAN
STATION 2+41 TO STATION 5+86

SHEET 2 OF 6

CITY DRAWING NUMBER REV
S.15-BC-2 0