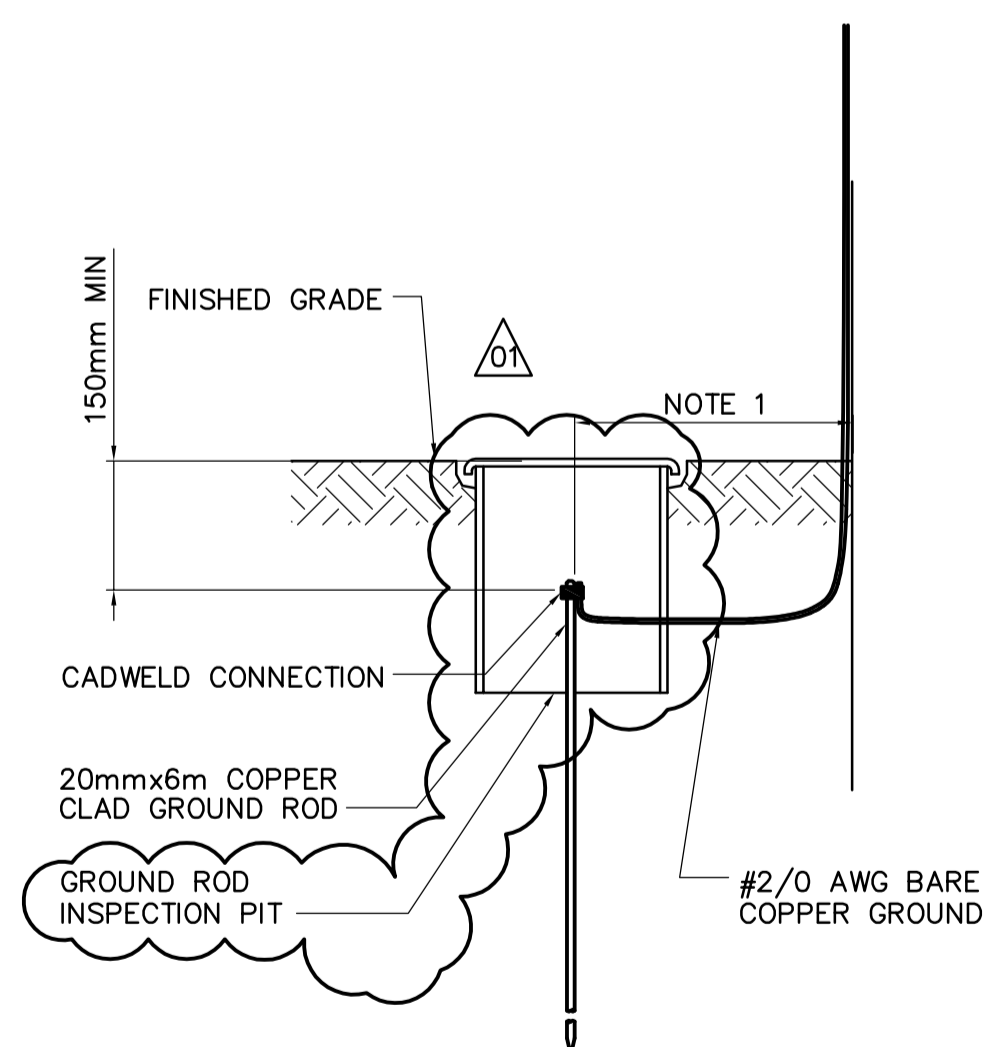


LIGHTNING PROTECTION PLAN
1:75

NOTES:

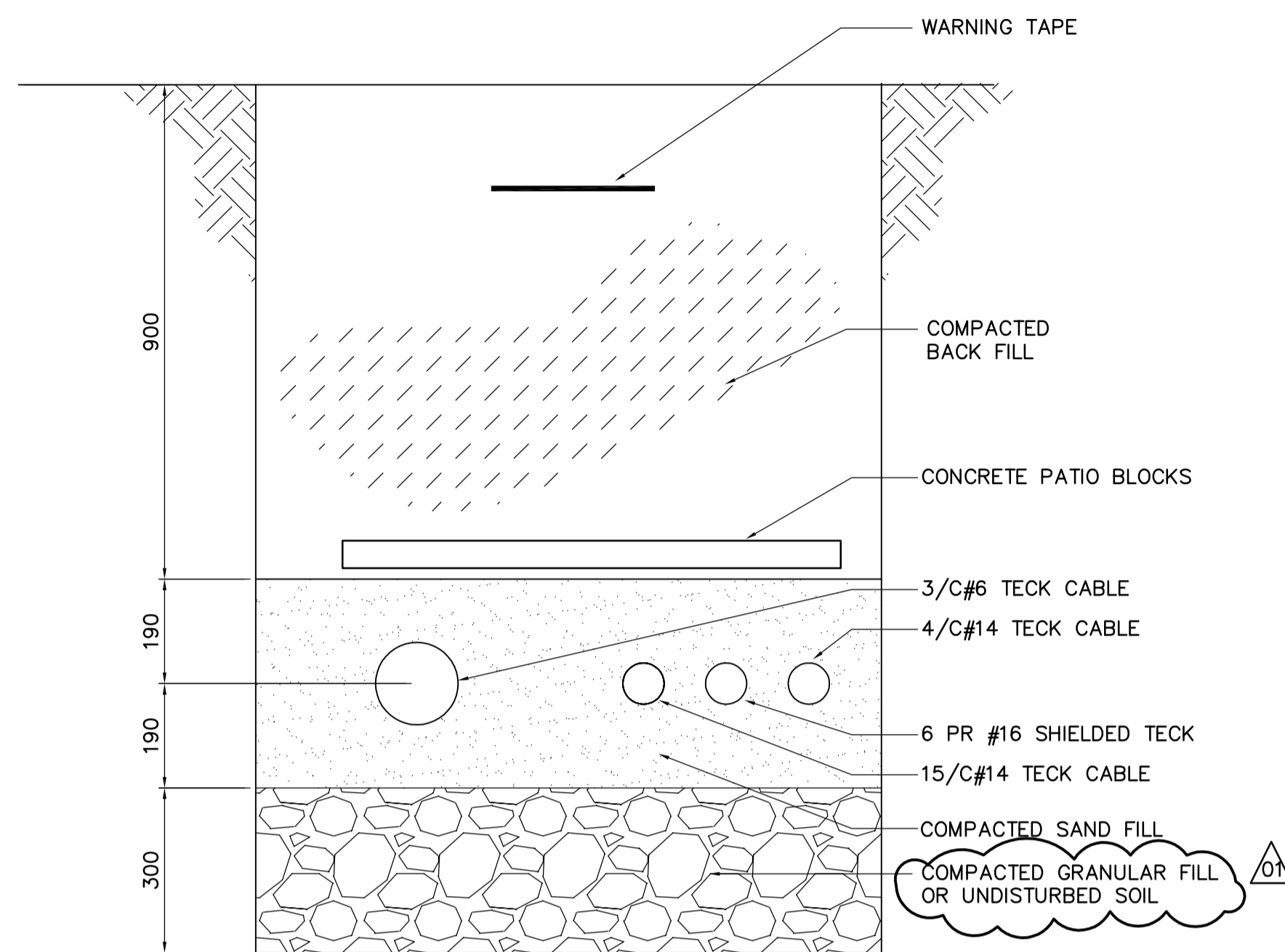
1. BOND OVERFLOW PIPE AND BRANCH 1 PIPE TO LIGHTNING PROTECTION SYSTEM.
2. GROUND RODS SHALL BE 20mmX6m COPPER CLAD.
3. INSTALLATION SHALL CONFORM TO CLASS IV AS SPECIFIED IN CSA-B72-M87.
4. AIR TERMINALS SHALL BE MIN. 1200mm ABOVE ROOF. PROVIDE TRIPOD BRACE SUPPORTS c/w COPPER ADHESIVE FEET.



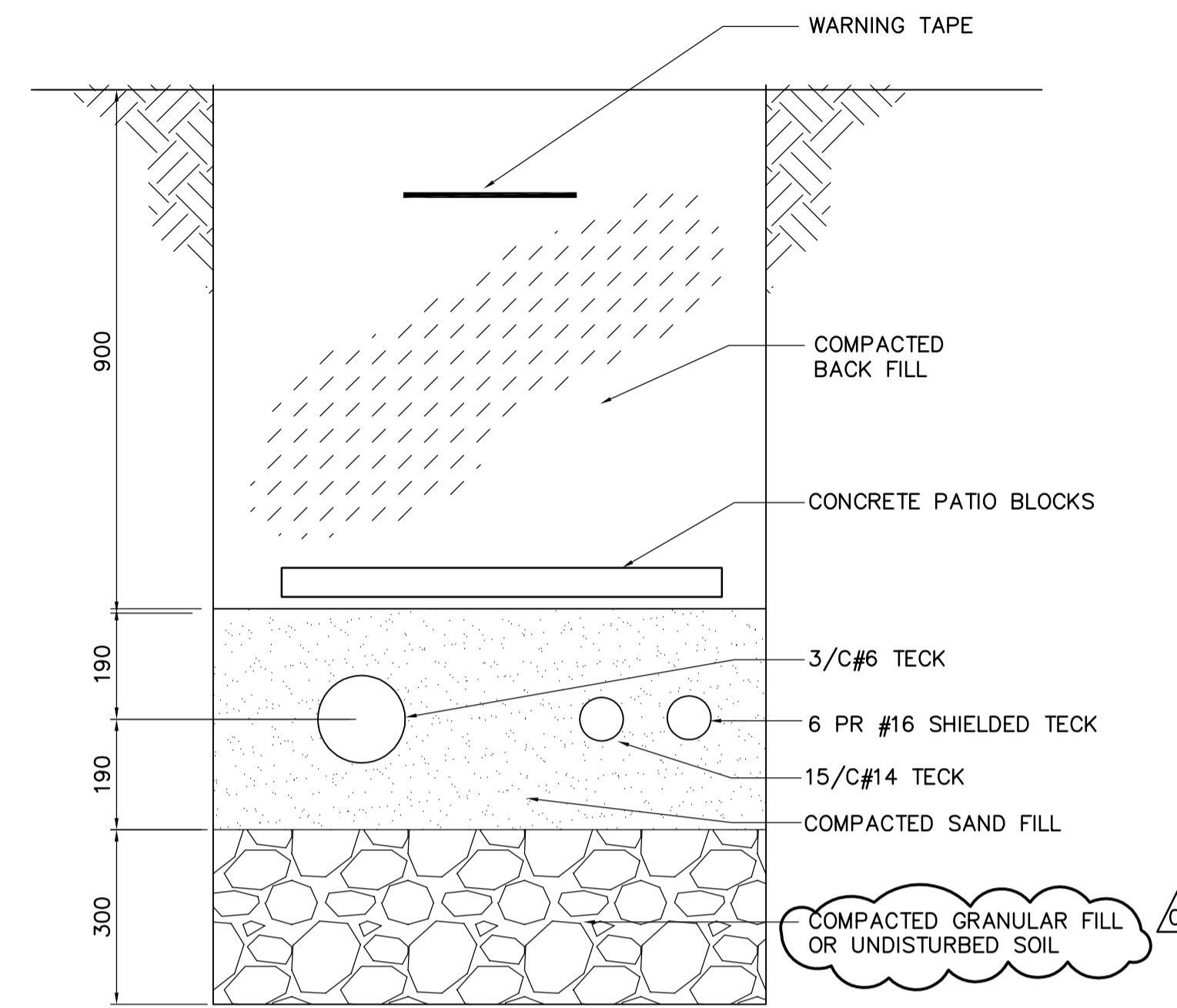
LIGHTNING GROUND ELECTRODE DETAIL
SCALE: NTS

NOTE:

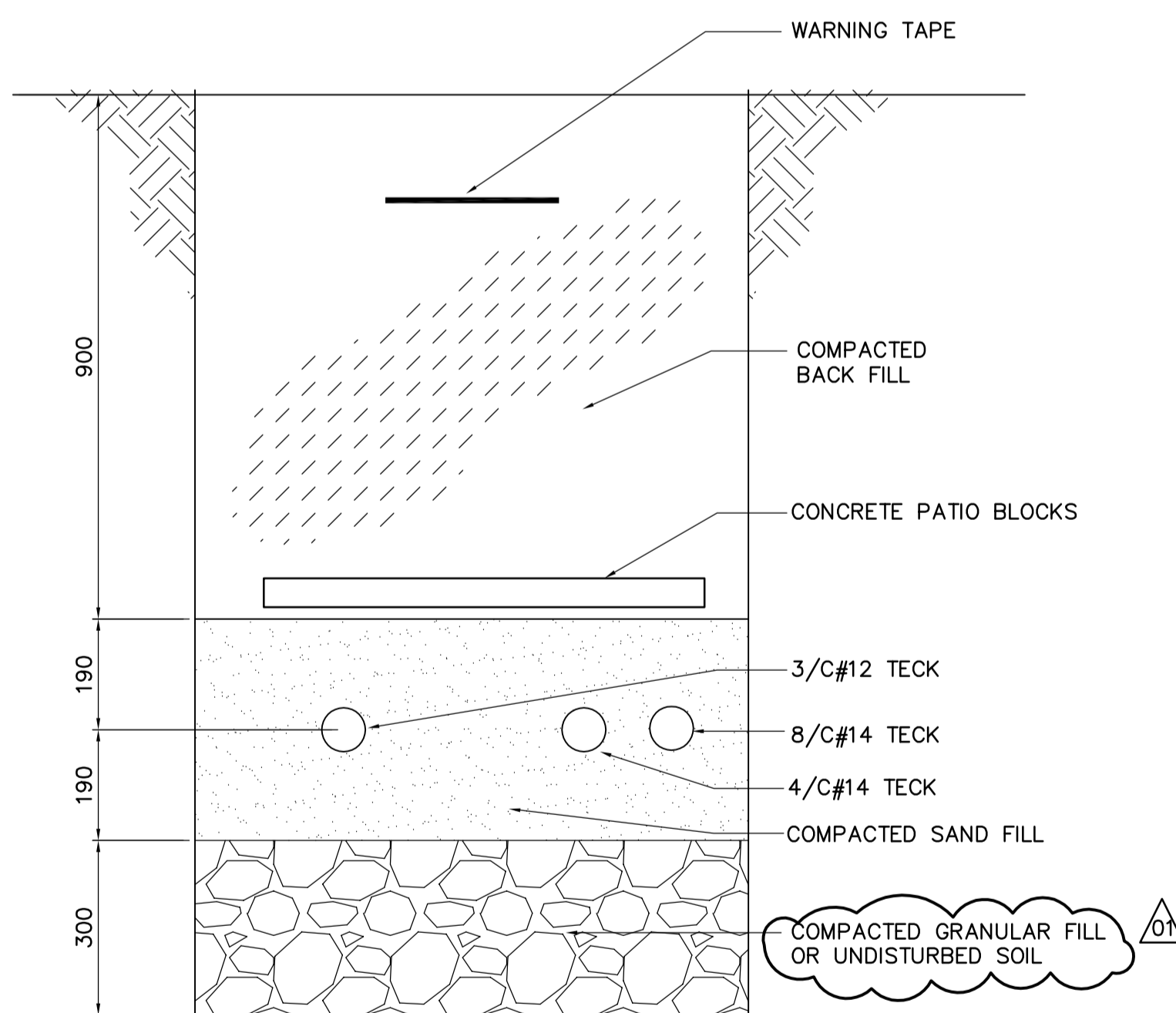
1. GROUND RODS SHALL BE INSTALLED OUTSIDE THE EXTENTS OF THE EXCAVATION SHORING.



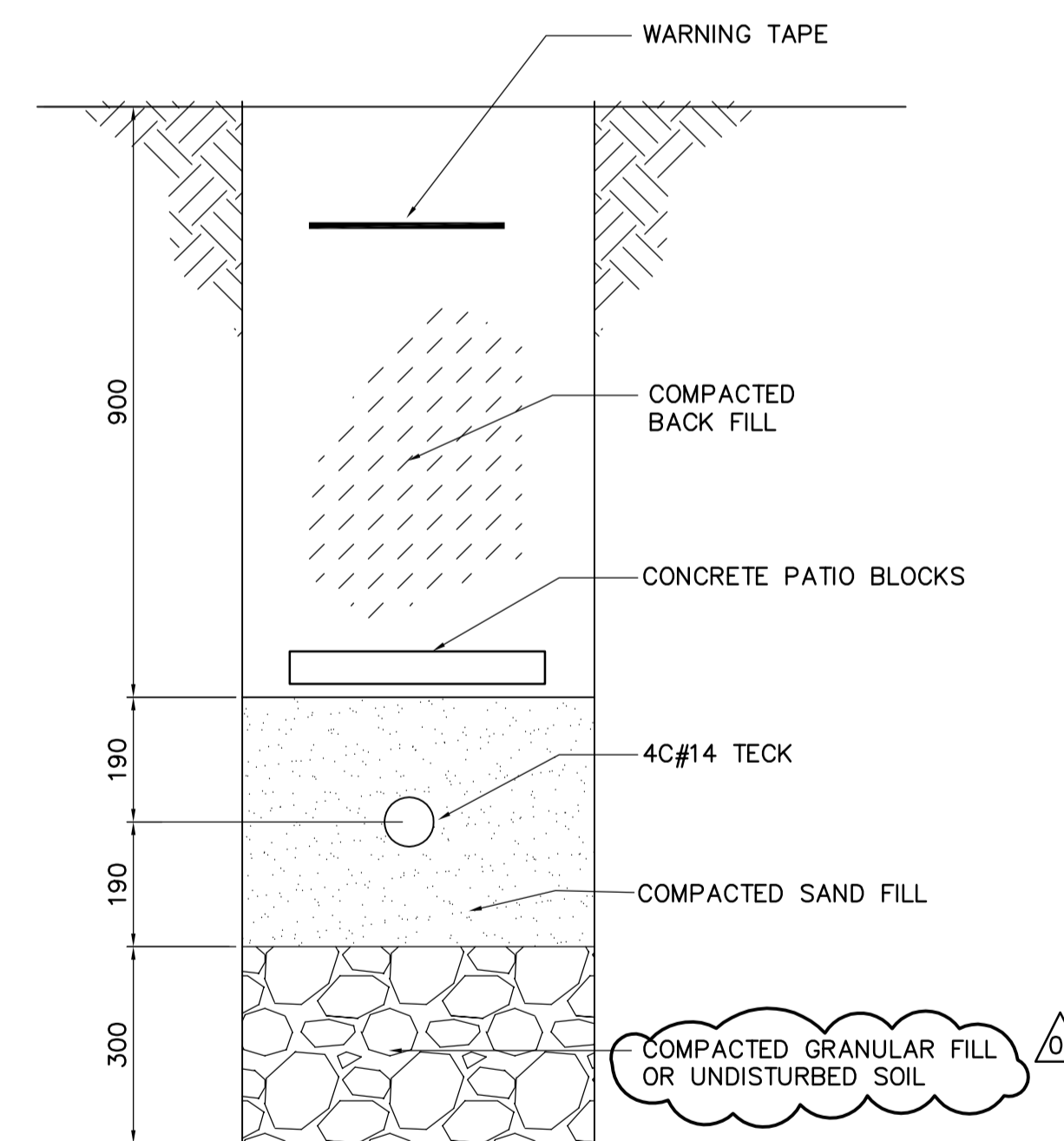
1 TRENCH SECTION
WY-E0110 SCALE: 1:10



2 TRENCH SECTION
WY-E0110 SCALE: 1:10



3 TRENCH SECTION
WY-E0110 SCALE: 1:10



4 TRENCH SECTION
WY-E0110 SCALE: 1:10

<p>APEGM Certificate of Authorization Earth Tech Canada Inc. No. 730 Expiry: April 30, 2007</p>	B.M. ELEV.	<p>Frederickson Cooper ARCHITECTS</p>	<p>EarthTech A Tyco International Ltd. Company</p>	ENGINEER'S SEAL	<p>THE CITY OF WINNIPEG WATER AND WASTE DEPARTMENT ENGINEERING DIVISION</p>														
				DESIGNED BY: BLM		CHECKED BY: GGP	ORIGINAL SIGNED BY: B.L. MOORE												
		DRAWN BY: ERC	APPROVED BY: AHL	2006/05/03		WATER TREATMENT PLANT YARD PIPING AND VALVE CHAMBERS SURGE TOWER CONSTRUCTION													
		SCALE: AS NOTED	RELEASED FOR CONSTRUCTION BY: R.SOROKOWSKI	CONSULTANT DRAWING NO. WY-E0450		CITY FILE NUMBER SHEET OF CITY DRAWING NUMBER 1-0601Y-A-E0450-001-0D													
	NO. REVISIONS	DATE	DATE	2006/02/06	DATE	2006/05/03													