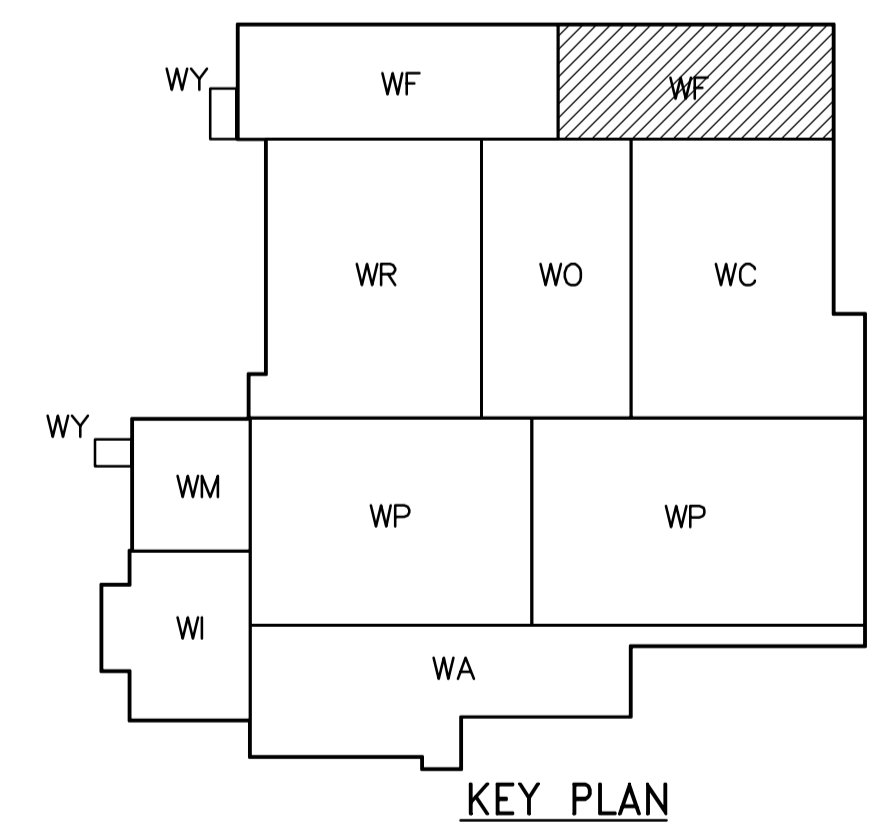
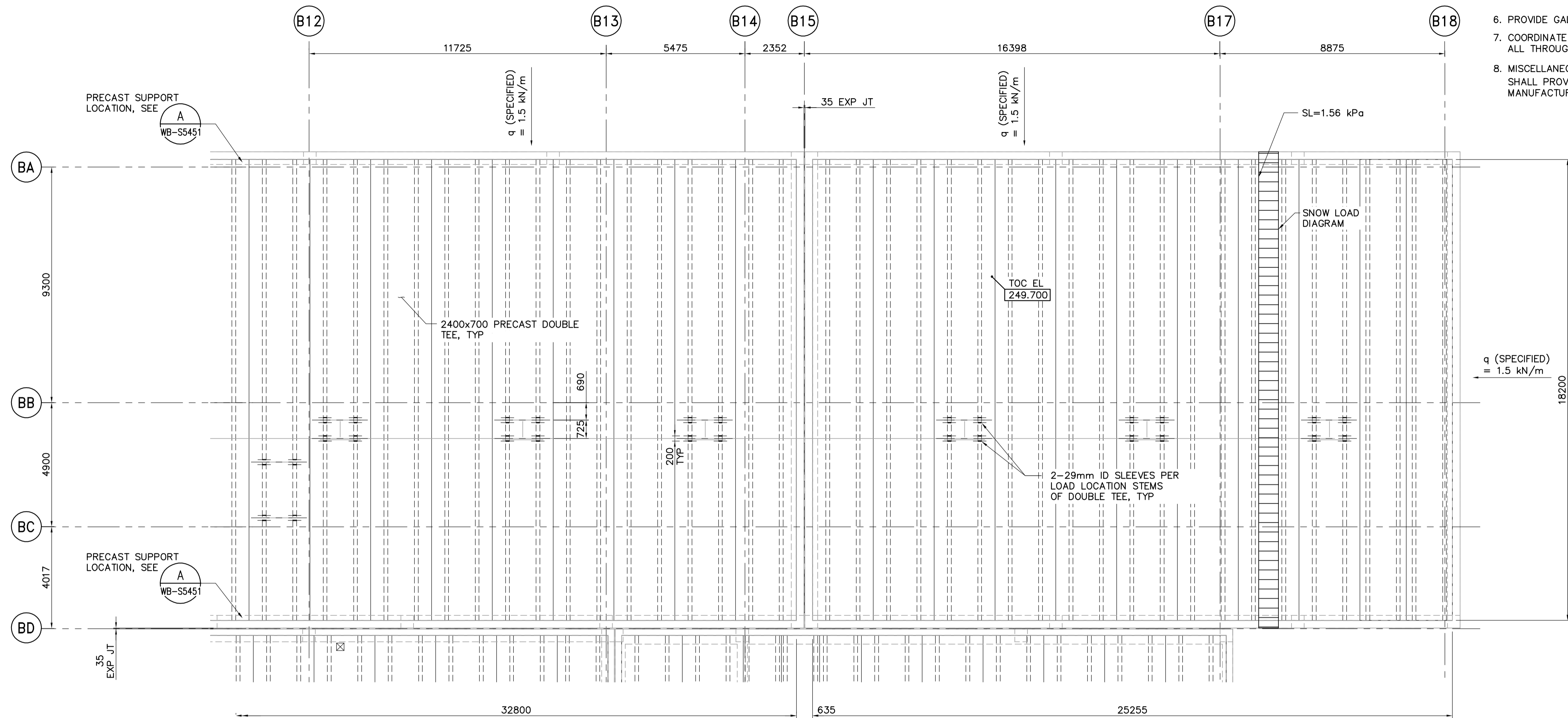
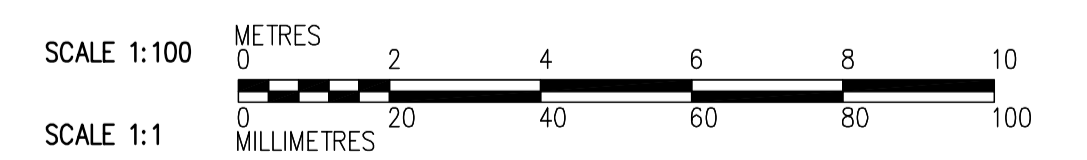


NOTES:

- SPECIFIED SNOW LOAD AS NOTED ON PLAN.
- SPECIFIED SERVICE LOAD = 1 kPa
- SEE DRAWING WB-S5451 FOR PRECAST DETAILS.
- SEE DETAIL **3** TO SUPPORT LIGHT FIXTURES, INSTALLED UNDER SEPARATE CONTRACT.
- PROVIDE 20mm DIA SLEEVES IN ALL DOUBLE TEE STEMS 1200mm C/C.
- PROVIDE GALVANIZED STEEL SLEEVES FOR THROUGH BOLTS.
- COORDINATE WITH CONTRACT ADMINISTRATOR LOCATION OF ALL THROUGH BOLTS (BO 742-2005)
- MISCELLANEOUS STEEL AND CRANE MANUFACTURER SHALL PROVIDE INSTALLATION TEMPLATES TO THE PRECAST MANUFACTURER.



ROOF PLAN
1:100



<p>APEGN Certificate of Authorization CH2M HILL Canada Ltd. No. 1441 Expiry: April 30, 2007</p>	<p>Frederickson Cooper ARCHITECTS</p>	<p>EarthTech A 100 International Ltd. Company</p>	ENGINEER'S SEAL	<p>THE CITY OF WINNIPEG WATER AND WASTE DEPARTMENT ENGINEERING DIVISION</p>	
			DESIGNED BY: MH CHECKED BY: AP DRAWN BY: CR APPROVED BY: AHL SCALE: 1:100 RELEASED FOR CONSTRUCTION BY: R. SOROKOWSKI		ORIGINAL SIGNED BY: D. KRUGER DATE: 2006/10/11 CONSULTANT DRAWING NO.: WF-S5147
B.M. ELEV.		NO. REVISIONS DATE BY		DATE: 2006/08/30 DATE: 2006/10/11	