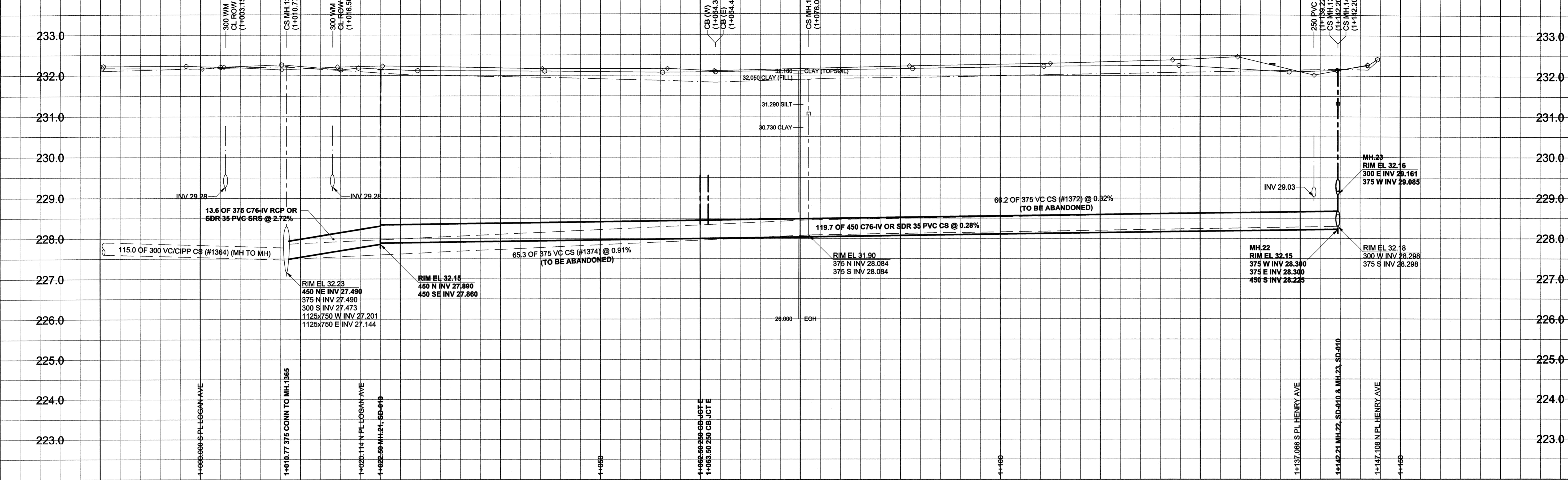
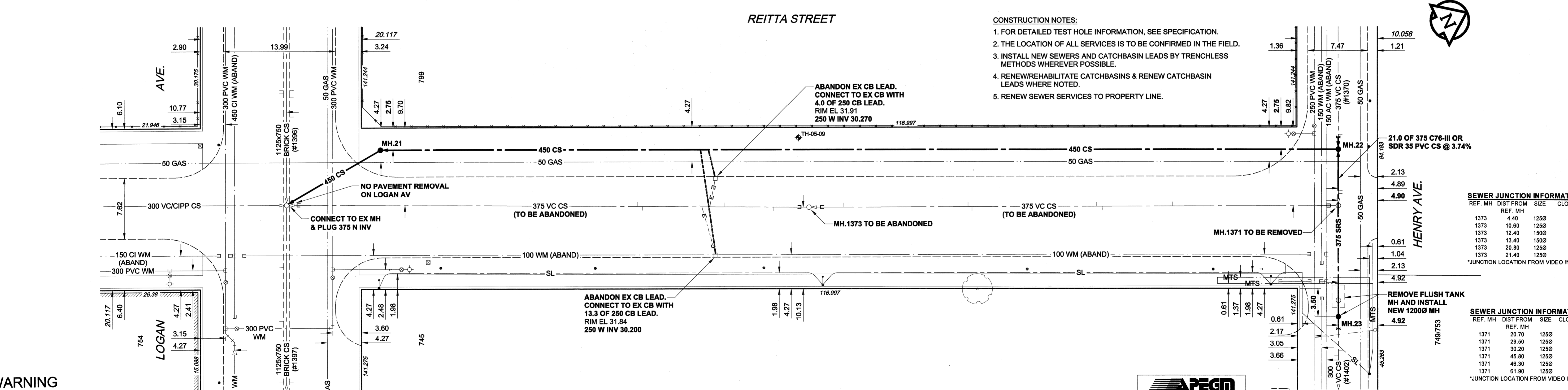


EXISTING FEATURES



CHAINAGE ALONG E PL



WARNING
 IF POWER EQUIPMENT OR EXPLOSIVES ARE TO BE USED FOR EXCAVATION ON THIS PROJECT, THE CONTRACTOR MUST:
 1) NOTIFY THE GAS COMPANY OF THE PROPOSED LOCATION OF EXCAVATION.
 2) TAKE PRECAUTION TO AVOID DAMAGE TO GAS COMPANY INSTALLATIONS.
 SEE PROVINCIAL REGULATION 140/92 FOR DETAILS

- CONSTRUCTION NOTES:**
- FOR DETAILED TEST HOLE INFORMATION, SEE SPECIFICATION.
 - THE LOCATION OF ALL SERVICES IS TO BE CONFIRMED IN THE FIELD.
 - INSTALL NEW SEWERS AND CATCHBASIN LEADS BY TRENCHLESS METHODS WHEREVER POSSIBLE.
 - RENEW/REHABILITATE CATCHBASINS & RENEW CATCHBASIN LEADS WHERE NOTED.
 - RENEW SEWER SERVICES TO PROPERTY LINE.

SEWER JUNCTION INFORMATION*

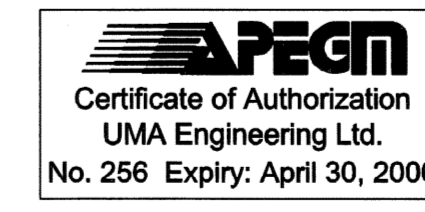
REF. MH	DIST FROM	SIZE	CLOCK AT
1373	4.40	1250	10
1373	10.60	1250	02
1373	12.40	1500	01
1373	13.40	1500	11
1373	20.80	1250	10
1373	21.40	1250	02

*JUNCTION LOCATION FROM VIDEO INSPECTION

SEWER JUNCTION INFORMATION*

REF. MH	DIST FROM	SIZE	CLOCK AT
1371	20.70	1250	02
1371	29.50	1250	10
1371	30.20	1250	02
1371	45.80	1250	10
1371	46.30	1250	02
1371	61.90	1250	02

*JUNCTION LOCATION FROM VIDEO INSPECTION



150 mm WM	WATERMAIN	150 mm WM	CURB STOP	150 mm WM	WATERMAIN	150 mm WM
	HYDRANT		REDUCER		HYDRANT	
	VALVE		COUPLING		VALVE	
	LAND DRAINAGE SEWER		ANODE		LAND DRAINAGE SEWER	
	MANHOLE		HYDRO		MANHOLE	
	CATCH BASIN		MTS		CATCH BASIN	
	CURB INLET		TESTHOLE		CURB INLET	
	CULVERT		LAMP STANDARD		CULVERT	
	PIPE ABANDONMENTS		TREE		PIPE ABANDONMENTS	
	SURVEY BAR				SURVEY BAR	
EXISTING	LEGEND - PLAN	NEW	EXISTING	LEGEND - PLAN	NEW	EXISTING
			EXISTING	LEGEND - PROFILE	NEW	

LOCATION APPROVED
 UNDERGROUND STRUCTURES

SUPR. U/G STRUCTURES DATE COMMITTEE

NOTE:
 LOCATION OF UNDERGROUND STRUCTURES AS SHOWN ARE BASED ON THE BEST INFORMATION AVAILABLE. BUT NO GUARANTEE IS GIVEN THAT ALL EXISTING UTILITIES ARE SHOWN OR THAT THE GIVEN LOCATIONS ARE EXACT. CONFIRMATION OF EXISTENCE AND EXACT LOCATION OF ALL SERVICES MUST BE OBTAINED FROM THE INDIVIDUAL UTILITIES BEFORE PROCEEDING WITH CONSTRUCTION.

BM 36-019	N.W. Cor. Logan Ave. & Reitta St., Tblt. in 7.6m
ELEV 231.070M	Conc. pile beneath Valve Box, 6.4m S. of N.L. Logan Avenue, & 6m E. of W.L. Reitta St.
NO.	ISSUED FOR CONSTRUCTION
REVISIONS	YY/MM/DD BY

DESIGNED BY	GEB	CHECKED BY	
DRAWN BY	ADL	APPROVED BY	
HOR. SCALE	1:250	RELEASED FOR CONSTRUCTION	
VERT. SCALE	1:50	DATE	March 15, 2006
DATE	06/03/11		

© 2005 UMA ENGINEERING LTD. ALL RIGHTS RESERVED.

UMA | AECOM

PROFESSIONAL'S SEAL
 PROVINCE OF MANITOBA
 REGISTERED PROFESSIONAL ENGINEER
 A. NAGY
 March 15, 2006

CONSULTANT DRAWING NO. 10
 D265-177-02-01

THE CITY OF WINNIPEG
 WATER AND WASTE DEPARTMENT

ALEXANDER/BANNATYNE
 COMBINED SEWER RELIEF
 CONTRACT 2A

REITTA STREET
 LOGAN AVENUE
 TO HENRY AVENUE

SHEET 10 OF 21
 CITY DRAWING NUMBER
LD-3304

BID OPPORTUNITY NO. 132-2006