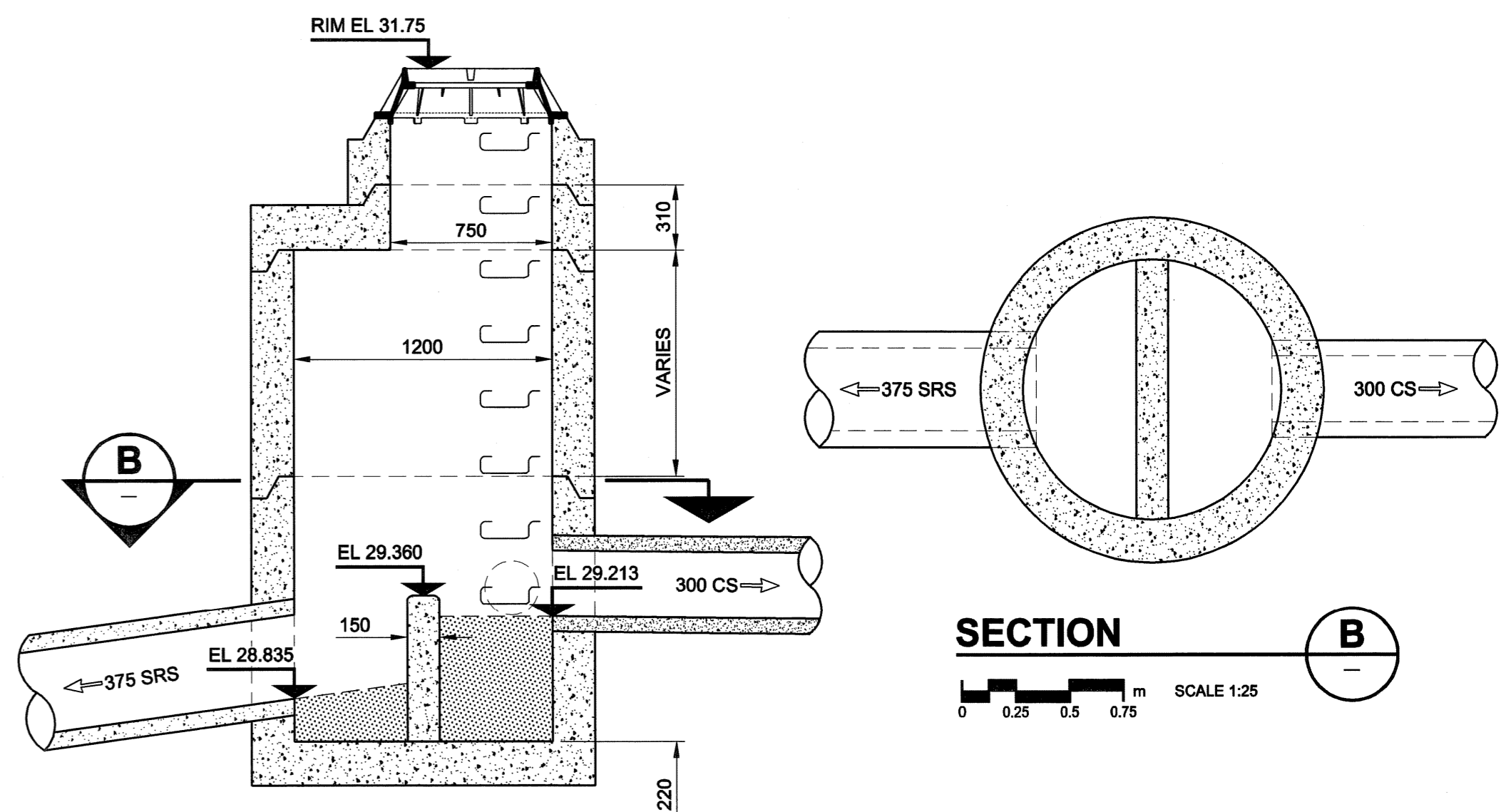
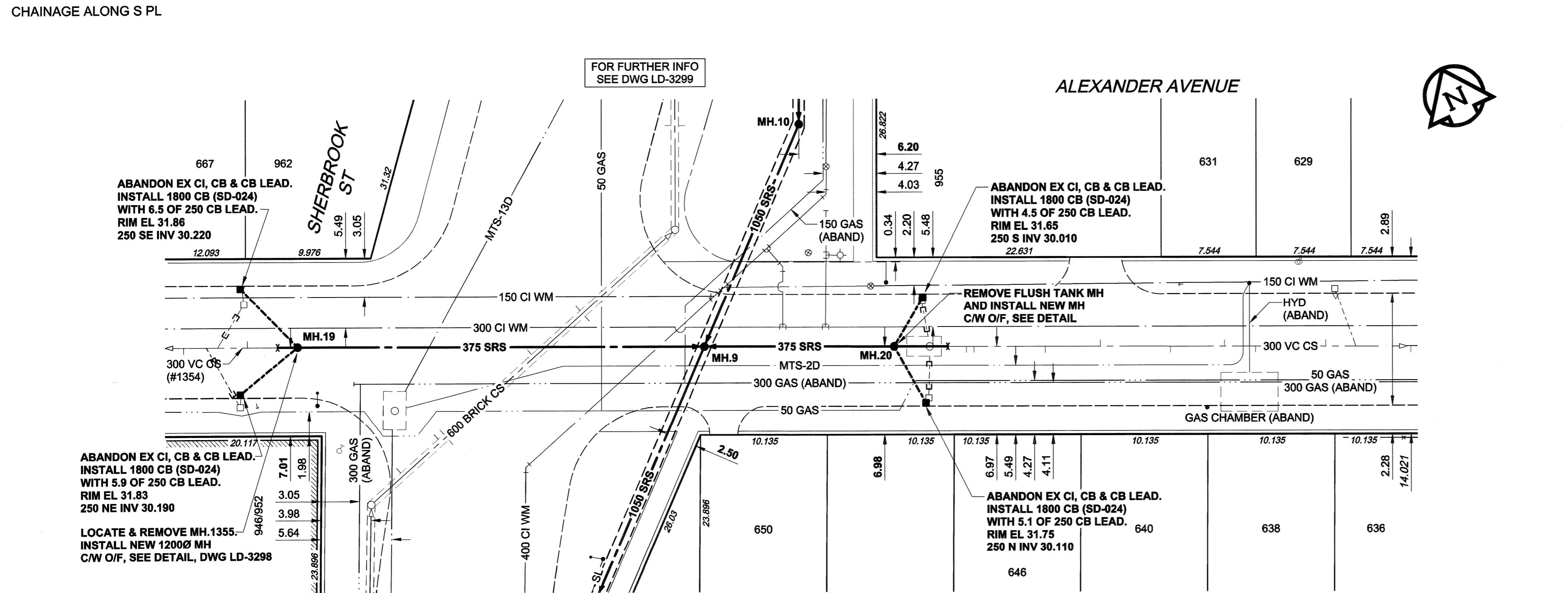
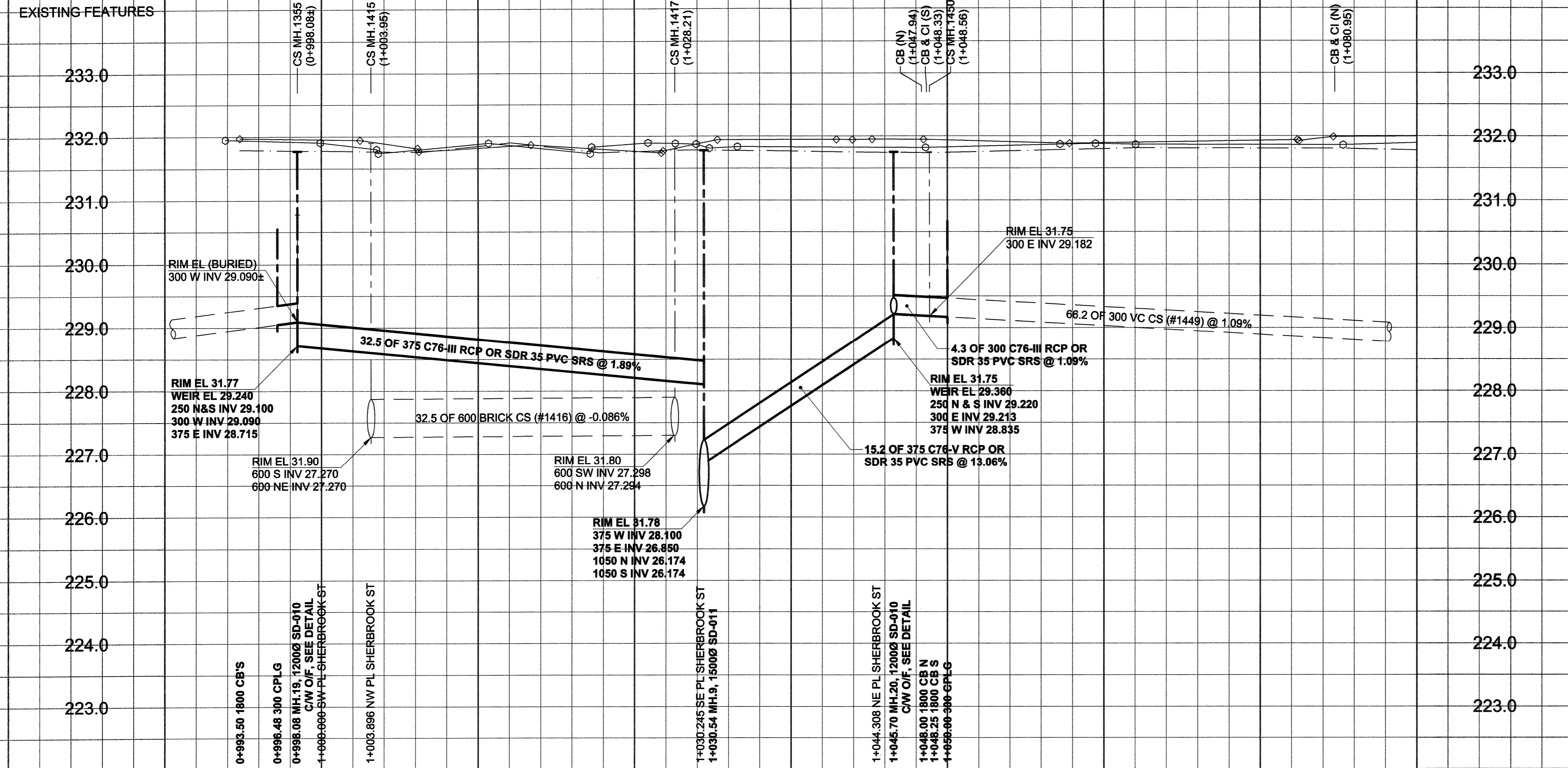


D SIZE 22' x 34' 659mm x 864mm

PLOT: 06/03/13 1:41:46 PM

UMA FILE NAME: D265-177-02_01-C-0003_RX.dwg Saved By: diane



MANHOLE 20 OVERFLOW DETAIL
TYPICAL MANHOLE REQUIREMENTS AS PER SD-010

- CONSTRUCTION NOTES:**
1. FOR DETAILED TEST HOLE INFORMATION, SEE SPECIFICATION.
 2. THE LOCATION OF ALL SERVICES IS TO BE CONFIRMED IN THE FIELD.
 3. INSTALL NEW SEWERS AND CATCHBASIN LEADS BY TRENCHLESS METHODS WHEREVER POSSIBLE.
 4. RENEW/REHABILITATE CATCHBASINS & RENEW CATCHBASIN LEADS WHERE NOTED.

WARNING
IF POWER EQUIPMENT OR EXPLOSIVES ARE TO BE USED FOR EXCAVATION ON THIS PROJECT, THE CONTRACTOR MUST:
1) NOTIFY THE GAS COMPANY OF THE PROPOSED LOCATION OF EXCAVATION.
2) TAKE PRECAUTION TO AVOID DAMAGE TO GAS COMPANY INSTALLATIONS.
SEE PROVINCIAL REGULATION 140/92 FOR DETAILS

EXISTING	LEGEND - PLAN	NEW	EXISTING	LEGEND - PLAN	NEW	EXISTING	LEGEND - PROFILE	NEW
150 mm WM	WATERMAIN	150 mm WM	150 mm WM	WATERMAIN	150 mm WM	150 mm WM	WATERMAIN	150 mm WM
300 mm LDS	LAND DRAINAGE SEWER	300 mm LDS	300 mm LDS	LAND DRAINAGE SEWER	300 mm LDS	300 mm LDS	LAND DRAINAGE SEWER	300 mm LDS
250 mm WWS	WASTE WATER SEWER	250 mm WWS	250 mm WWS	WASTE WATER SEWER	250 mm WWS	250 mm WWS	WASTE WATER SEWER	250 mm WWS
○	MANHOLE	●	○	MANHOLE	●	○	MANHOLE	●
□	CATCH BASIN	■	□	CATCH BASIN	■	□	CATCH BASIN	■
△	CURB INLET	▲	△	CURB INLET	▲	△	CURB INLET	▲
▭	CULVERT	▭	▭	CULVERT	▭	▭	CULVERT	▭
⊕	PIPE ABANDONMENTS	⊕	⊕	PIPE ABANDONMENTS	⊕	⊕	PIPE ABANDONMENTS	⊕
+	SURVEY BAR	+	+	SURVEY BAR	+	+	SURVEY BAR	+
○	HYDRANT	○	○	HYDRANT	○	○	HYDRANT	○
○	VALVE	○	○	VALVE	○	○	VALVE	○
○	ANODE	○	○	ANODE	○	○	ANODE	○
○	HYDRO	○	○	HYDRO	○	○	HYDRO	○
○	MTS	○	○	MTS	○	○	MTS	○
○	GAS	○	○	GAS	○	○	GAS	○
○	TESTHOLE	○	○	TESTHOLE	○	○	TESTHOLE	○
○	LAMP STANDARD	○	○	LAMP STANDARD	○	○	LAMP STANDARD	○
○	TREE	○	○	TREE	○	○	TREE	○

LOCATION APPROVED
UNDERGROUND STRUCTURES
SUPR. U/G STRUCTURES DATE COMMITTEE
NOTE:
LOCATION OF UNDERGROUND STRUCTURES AS SHOWN ARE BASED ON THE BEST INFORMATION AVAILABLE. BUT NO GUARANTEE IS GIVEN THAT ALL EXISTING UTILITIES ARE SHOWN OR THAT THE GIVEN LOCATIONS ARE EXACT. CONFIRMATION OF EXISTENCE AND EXACT LOCATION OF ALL SERVICES MUST BE OBTAINED FROM THE INDIVIDUAL UTILITIES BEFORE PROCEEDING WITH CONSTRUCTION.

BM 36-039 ELEV 232.749m	N. Side William Ave. W. of Sherbrook St., Tbl. in S. Conc. foundation No. 671 William Ave. (Harry Medovy House), 5.2m W. & 0.6m below bricks of most S. Ely. Cor. of Bldg.
DESIGNED BY	GEB
CHECKED BY	<i>[Signature]</i>
DRAWN BY	ADL
APPROVED BY	<i>[Signature]</i>
HOR. SCALE	1:250
VERT. SCALE	1:50
RELEASED FOR CONSTRUCTION	<i>[Signature]</i>
DATE	06/03/14

METRIC
WHOLE NUMBERS INDICATE MILLIMETRES
DECIMALIZED NUMBERS INDICATE METRES

UMA | AECOM
© 2005 UMA ENGINEERING LTD. ALL RIGHTS RESERVED.
DESIGNED BY GEB
CHECKED BY *[Signature]*
DRAWN BY ADL
APPROVED BY *[Signature]*
HOR. SCALE 1:250
VERT. SCALE 1:50
RELEASED FOR CONSTRUCTION
DATE 06/03/14

PROFESSIONAL'S SEAL
PROVINCE OF MANITOBA
REGISTERED PROFESSIONAL ENGINEER
A. NAGY
March 13, 2006
CONSULTANT DRAWING NO. 09
D265-177-02-01

THE CITY OF WINNIPEG
WATER AND WASTE DEPARTMENT
ALEXANDER/BANNATYNE
COMBINED SEWER RELIEF
CONTRACT 2A
ALEXANDER AVENUE
SHERBROOK STREET
TO GWENDOLINE STREET

SHEET 9 OF 21
CITY DRAWING NUMBER
LD-3303
REV 0

BID OPPORTUNITY NO. 132-2006