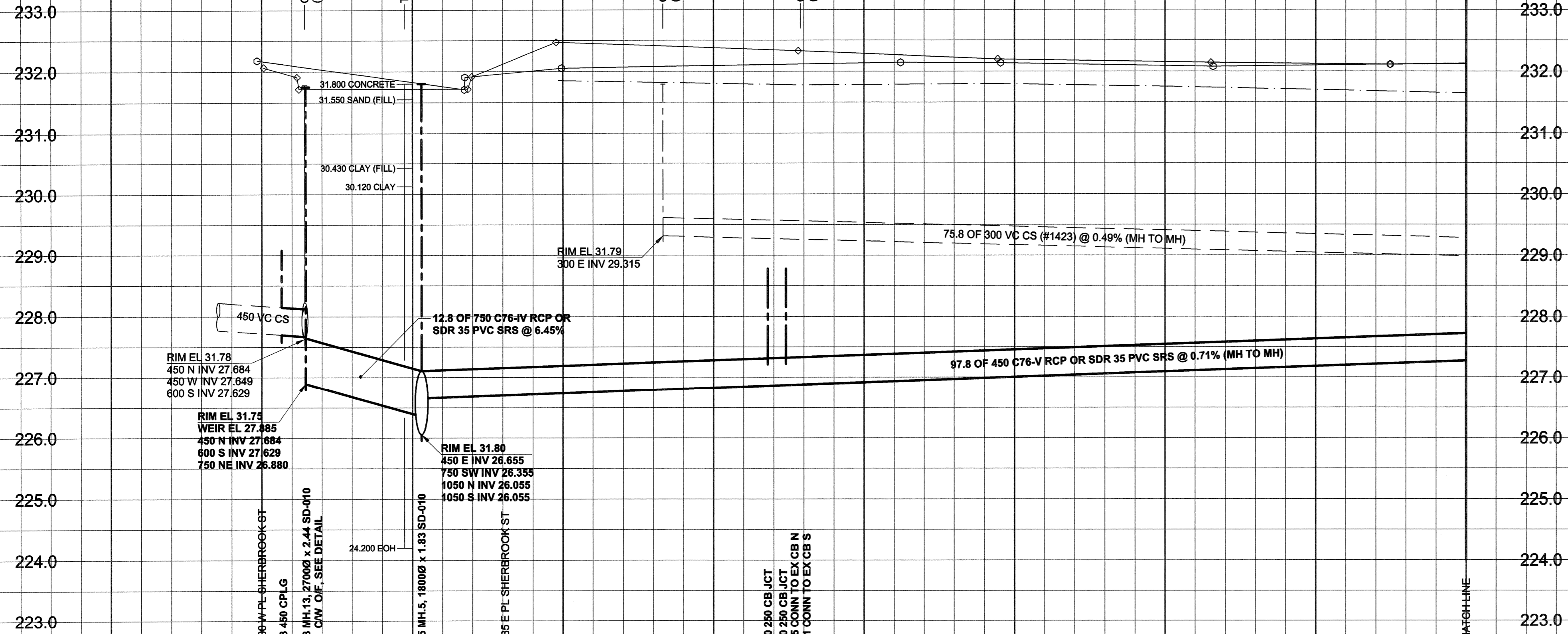


D SIZE 22" x 34" (559mm x 864mm)

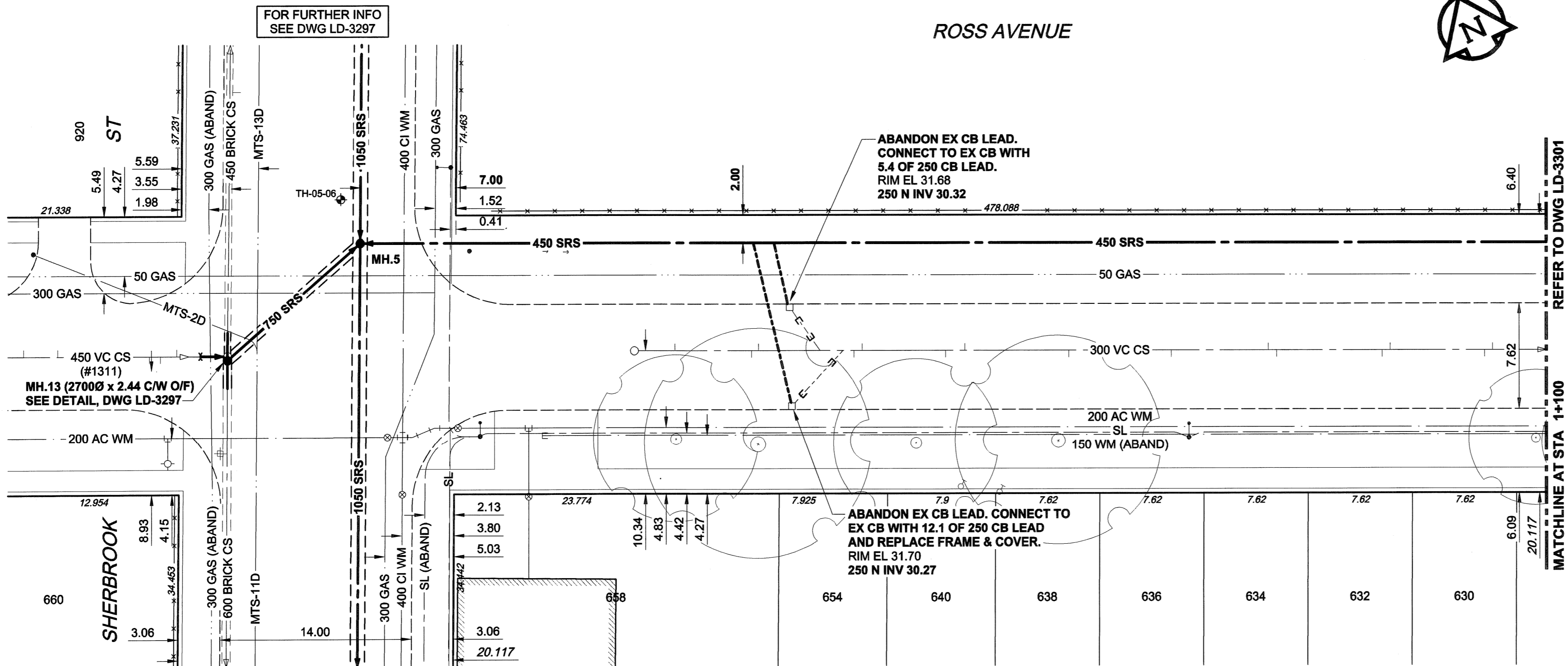
PLOT: 06/03/13 1:55:58 PM

UMA FILE NAME: D265-177-02_01-C-0006_RX.dwg Saved By: dlane

EXISTING FEATURES



CHAINAGE ALONG S PL



CONSTRUCTION NOTES:

- FOR DETAILED TEST HOLE INFORMATION, SEE SPECIFICATION.
- THE LOCATION OF ALL SERVICES IS TO BE CONFIRMED IN THE FIELD.
- INSTALL NEW SEWERS AND CATCHBASIN LEADS BY TRENCHLESS METHODS WHEREVER POSSIBLE.
- RENEW/REHABILITATE CATCHBASINS & RENEW CATCHBASIN LEADS WHERE NOTED.

WARNING

IF POWER EQUIPMENT OR EXPLOSIVES ARE TO BE USED FOR EXCAVATION ON THIS PROJECT, THE CONTRACTOR MUST:

- NOTIFY THE GAS COMPANY OF THE PROPOSED LOCATION OF EXCAVATION.
- TAKE PRECAUTION TO AVOID DAMAGE TO GAS COMPANY INSTALLATIONS. SEE PROVINCIAL REGULATION 140/92 FOR DETAILS.

FOR FURTHER INFO SEE DWG LD-3296

FOR FURTHER INFO SEE DWG LD-3297

METRIC

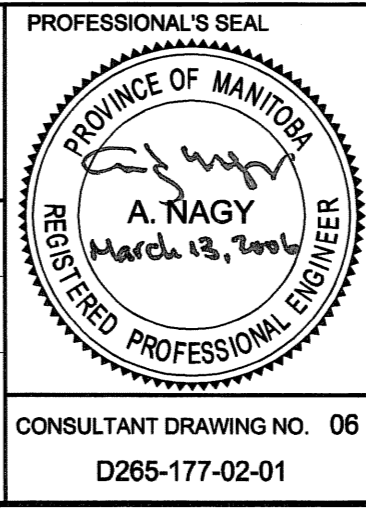
WHOLE NUMBERS INDICATE MILLIMETRES
DECIMALIZED NUMBERS INDICATE METRES

150 mm WM	WATERMAIN	150 mm WM	CURB STOP	150 mm WM	WATERMAIN	150 mm WM	LOCATION APPROVED
Hydrant	HYDRANT	Reducer	REDUCER	Hydrant	HYDRANT	300 mm LDS	UNDERGROUND STRUCTURES
Valve	VALVE	Coupling	COUPLING	Valve	VALVE	250 mm WWS	DATE
300 mm LDS	LAND DRAINAGE SEWER	Anode	ANODE	300 mm LDS	LAND DRAINAGE SEWER	Supr. U/G Structures	COMMITTEE
250 mm WWS	WASTE WATER SEWER	Hydro	HYDRO	250 mm WWS	WASTE WATER SEWER	NOTE:	
Manhole	MANHOLE	MTS	MTS	Pavement Crown	PAVEMENT CROWN	LOCATION OF UNDERGROUND STRUCTURES	
Catch Basin	CATCH BASIN	Gas	GAS	N/W Property Line	N/W PROPERTY LINE	AS SHOWN ARE BASED ON THE BEST	
Curb Inlet	CURB INLET	Testhole	TESTHOLE	S/E Property Line	S/E PROPERTY LINE	INFORMATION AVAILABLE, BUT NO	
Culvert	CULVERT	Lamp Standard	LAMP STANDARD	N/W Gutter	N/W GUTTER	GUARANTEE IS GIVEN THAT ALL EXISTING	
Pipe Abandonments	PIPE ABANDONMENTS	Tree	TREE	S/E Gutter	S/E GUTTER	UTILITIES ARE SHOWN OR THAT THE GIVEN	
Survey Bar	SURVEY BAR					LOCATIONS ARE EXACT. CONFIRMATION OF	
Existing	LEGEND - PLAN	New	LEGEND - PLAN	Existing	LEGEND - PROFILE	EXISTENCE AND EXACT LOCATION OF ALL	
						SERVICES MUST BE OBTAINED FROM THE	
						INDIVIDUAL UTILITIES BEFORE PROCEEDING	
						WITH CONSTRUCTION.	

BM 36-039	N. Side William Ave. W. of Sherbrook St., Tblt. in S. Conc. foundation No. 871 William Ave. (Harry Medovy House), 5.2m W. & 0.6m below bricks of most S. Ely. Cor. of Bldg.
ELEV 232.749m	
0	ISSUED FOR CONSTRUCTION 06/03/08 ADL
NO.	REVISIONS YYMMDD BY

DESIGNED BY	GEB	CHECKED BY	[Signature]
DRAWN BY	ADL	APPROVED BY	[Signature]
HOR. SCALE	1:250	RELEASED FOR CONSTRUCTION	[Signature]
VERT. SCALE	1:50	DATE	20/03/13

UMA AECOM	
© 2005 UMA ENGINEERING LTD. ALL RIGHTS RESERVED.	
DATE	06/03/13



THE CITY OF WINNIPEG
WATER AND WASTE DEPARTMENT

ALEXANDER/BANNATYNE
COMBINED SEWER RELIEF
CONTRACT 2A
ROSS AVENUE
SHERBROOK STREET
TO 400m WEST OF ISABEL STREET

SHEET 6 OF 21
CITY DRAWING NUMBER
LD-3300
REV 0

CONSULTANT DRAWING NO. 06
D265-177-02-01



BID OPPORTUNITY NO. 132-2006