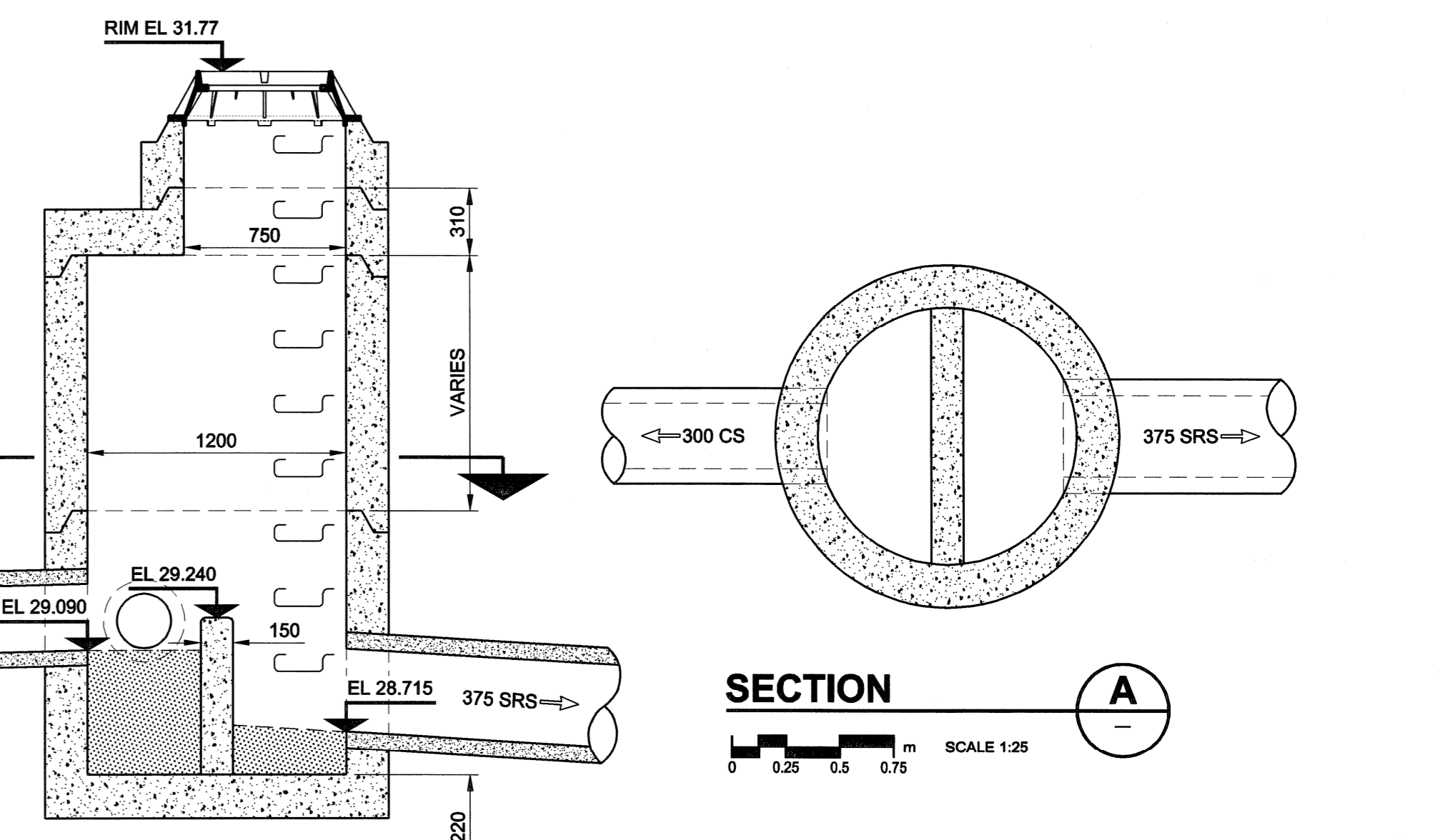
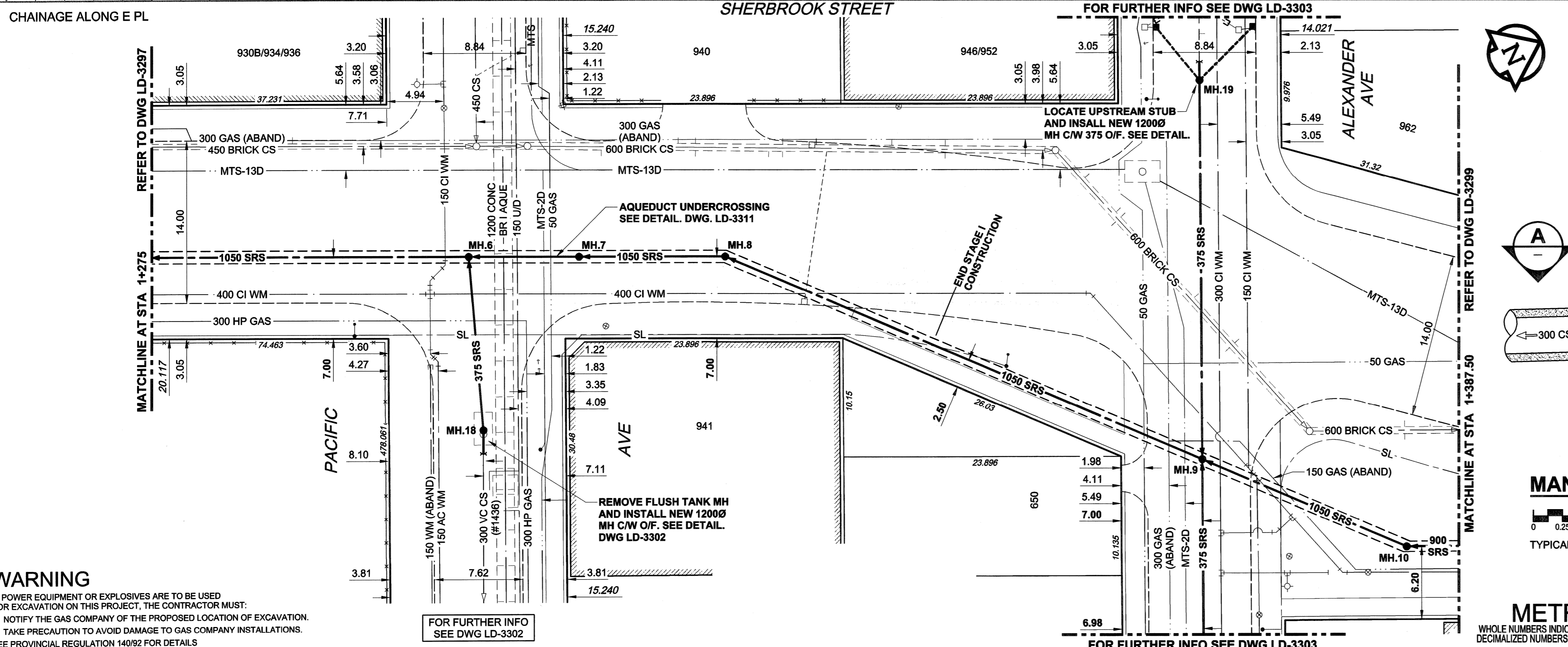
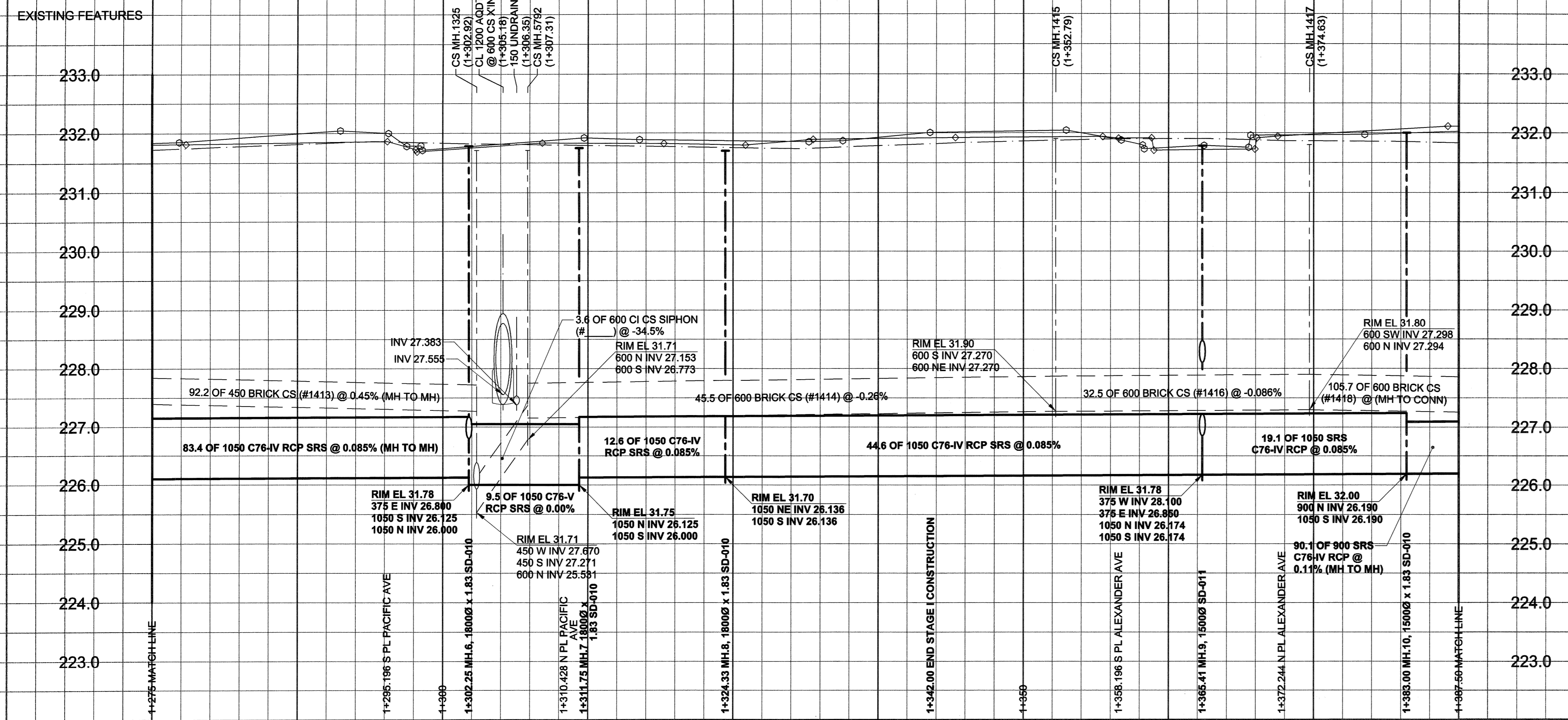


D SIZE 22" x 34" (559mm x 864mm)



CONSTRUCTION NOTES:

- FOR DETAILED TEST HOLE INFORMATION, SEE SPECIFICATION.
- THE LOCATION OF ALL SERVICES IS TO BE CONFIRMED IN THE FIELD.
- INSTALL NEW SEWERS AND CATCHBASIN LEADS BY TRENCHLESS METHODS WHEREVER POSSIBLE.
- RENEW/REHABILITATE CATCHBASINS & NEW CATCHBASIN LEADS WHERE NOTED.
- CONTACT THE WATER AND WASTE DEPARTMENT CONSTRUCTION SERVICES CO-ORDINATOR, ANDY VINCENT, AT 986-3823 A MINIMUM OF 7 DAYS PRIOR TO CROSSING OR WORKING ADJACENT TO AQUEDUCT TO ARRANGE FOR INSPECTION.

MANHOLE 19 OVERFLOW DETAIL

0 0.25 0.5 0.75 m SCALE 1:25

TYPICAL MANHOLE REQUIREMENTS AS PER SD-010

METRIC
WHOLE NUMBERS INDICATE MILLIMETRES
DECIMALIZED NUMBERS INDICATE METRES

UMA | AECOM

© 2005 UMA ENGINEERING LTD. ALL RIGHTS RESERVED.

DESIGNED BY: GEB
DRAWN BY: ADL
HOR. SCALE: 1:250
VERT. SCALE: 1:50
DATE: 06/03/11

CHECKED BY: [Signature]
APPROVED BY: [Signature]
RELEASED FOR CONSTRUCTION: [Signature]
DATE: March 15, 2006

PROFESSIONAL'S SEAL
PROVINCE OF MANITOBA
A. NAGY
REGISTERED PROFESSIONAL ENGINEER
March 15, 2006
CONSULTANT DRAWING NO. 04
D265-177-02-01

THE CITY OF WINNIPEG
WATER AND WASTE DEPARTMENT

ALEXANDER/BANNATYNE
COMBINED SEWER RELIEF
CONTRACT 2A
SHERBROOK STREET
55m NORTH OF ROSS AVENUE
TO 85m SOUTH OF LOGAN AVENUE

SHEET 4 OF 21
CITY DRAWING NUMBER
LD-3298
REV 0

BID OPPORTUNITY NO. 132-2006

WARNING

IF POWER EQUIPMENT OR EXPLOSIVES ARE TO BE USED FOR EXCAVATION ON THIS PROJECT, THE CONTRACTOR MUST:

- NOTIFY THE GAS COMPANY OF THE PROPOSED LOCATION OF EXCAVATION.
- TAKE PRECAUTION TO AVOID DAMAGE TO GAS COMPANY INSTALLATIONS.

SEE PROVINCIAL REGULATION 140/92 FOR DETAILS

EXISTING	LEGEND - PLAN	NEW	EXISTING	LEGEND - PLAN	NEW	EXISTING	LEGEND - PROFILE	NEW
150 mm WM	WATERMAIN	150 mm WM	CURB STOP	150 mm WM	WATERMAIN	150 mm WM	WATERMAIN	150 mm WM
300 mm LDS	LAND DRAINAGE SEWER	300 mm LDS	REDUCER	300 mm LDS	HYDRANT	300 mm LDS	HYDRANT	300 mm LDS
250 mm WWS	WASTE WATER SEWER	250 mm WWS	VALVE	250 mm WWS	VALVE	250 mm WWS	VALVE	250 mm WWS
	MANHOLE		COUPLING		ANODE		ANODE	
	CATCH BASIN		HYDRO		HYDRO		HYDRO	
	CURB INLET		MTS		MTS		MTS	
	CULVERT		GAS		GAS		GAS	
	PIPE ABANDONMENTS		TESTHOLE		TESTHOLE		TESTHOLE	
	SURVEY BAR		LAMP STANDARD		LAMP STANDARD		LAMP STANDARD	
			TREE		TREE		TREE	

LOCATION APPROVED
UNDERGROUND STRUCTURES

SUPR. U/G STRUCTURES DATE COMMITTEE

NOTE:
LOCATION OF UNDERGROUND STRUCTURES AS SHOWN ARE BASED ON THE BEST INFORMATION AVAILABLE. BUT NO GUARANTEE IS GIVEN THAT ALL EXISTING UTILITIES ARE SHOWN OR THAT THE GIVEN LOCATIONS ARE EXACT. CONFIRMATION OF EXISTENCE AND EXACT LOCATION OF ALL SERVICES MUST BE OBTAINED FROM THE INDIVIDUAL UTILITIES BEFORE PROCEEDING WITH CONSTRUCTION.

NO.	REVISIONS	Y/M/D	BY
0	ISSUED FOR CONSTRUCTION	06/03/08	ADL

N. Side William Ave. W. of Sherbrook St., Tot. in S. Conc. foundation No. 671 William Ave. (Harry Medvey House), 5.2m W. & 0.6m below bricks of most S. Ely. Cor. of Bldg.

UMA | AECOM

© 2005 UMA ENGINEERING LTD. ALL RIGHTS RESERVED.

DESIGNED BY: GEB
DRAWN BY: ADL
HOR. SCALE: 1:250
VERT. SCALE: 1:50
DATE: 06/03/11

PROFESSIONAL'S SEAL

PROVINCE OF MANITOBA
A. NAGY
REGISTERED PROFESSIONAL ENGINEER
March 15, 2006
CONSULTANT DRAWING NO. 04
D265-177-02-01

THE CITY OF WINNIPEG
WATER AND WASTE DEPARTMENT

ALEXANDER/BANNATYNE
COMBINED SEWER RELIEF
CONTRACT 2A
SHERBROOK STREET
55m NORTH OF ROSS AVENUE
TO 85m SOUTH OF LOGAN AVENUE

SHEET 4 OF 21
CITY DRAWING NUMBER
LD-3298
REV 0

BID OPPORTUNITY NO. 132-2006