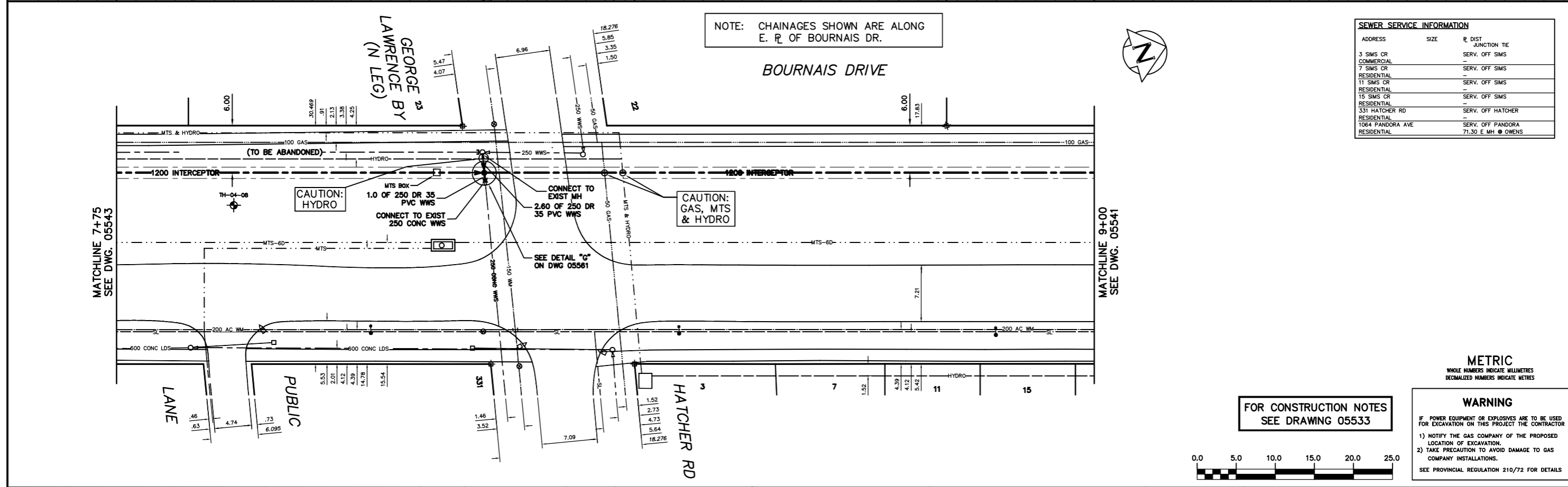


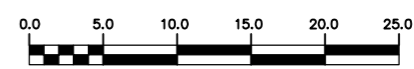
NOTE: CHAINAGES SHOWN ARE ALONG E. R. OF BOURNAIS DR.

| SEWER SERVICE INFORMATION | | | |
|---------------------------|-------------|------------|-------------------|
| ADDRESS | SIZE | R. DIST. | JUNCTION TIE |
| 3 SIMS CR | COMMERCIAL | | SERV. OFF SIMS |
| 7 SIMS CR | RESIDENTIAL | | SERV. OFF SIMS |
| 11 SIMS CR | RESIDENTIAL | | SERV. OFF SIMS |
| 15 SIMS CR | RESIDENTIAL | | SERV. OFF SIMS |
| 331 HATCHER RD | RESIDENTIAL | | SERV. OFF HATCHER |
| 1064 PANDORA AVE | RESIDENTIAL | | SERV. OFF PANDORA |
| | | 71.30 E MH | OWENS |



FOR CONSTRUCTION NOTES SEE DRAWING 05533

WARNING
 IF POWER EQUIPMENT OR EXPLOSIVES ARE TO BE USED FOR EXCAVATION ON THIS PROJECT THE CONTRACTOR
 1) NOTIFY THE GAS COMPANY OF THE PROPOSED LOCATION OF EXCAVATION.
 2) TAKE PRECAUTION TO AVOID DAMAGE TO GAS COMPANY INSTALLATIONS.
 SEE PROVINCIAL REGULATION 210/72 FOR DETAILS



| 200 WM | WATERMAIN | 200 WM | SL, HYDRO | 150 WM | WATERMAIN | 150 WM |
|----------|---------------------|----------|-------------------|----------------|------------------------|----------|
| ⊕ | HYDRANT | ⊕ | MTS | ⊕ | HYDRANT | ⊕ |
| ⊙ | VALVE | ⊙ | TRAFFIC SIGNALS | ⊙ | VALVE | ⊙ |
| 525 LDS | LAND DRAINAGE SEWER | 525 LDS | GAS | 300 LDS | LAND DRAINAGE SEWER | 300 LDS |
| 375 WWS | WASTEWATER SEWER | 375 WWS | SURVEY BAR | 250 WWS | WASTEWATER SEWER | 250 WWS |
| ○ | MANHOLE | ● | FENCE | ⊕ | PROFILE | ⊕ |
| □ | CATCH BASIN | ⊕ | POLE - HYDRO, MTS | ⊕ | GROUND ABOVE PIPE | ⊕ |
| ▽ | CURB INLET | ▽ | CURB STOP | ⊕ | ⊕ DITCH (NORTH & WEST) | ⊕ |
| ⊕ | JUNCTIONS | ⊕ | GUY ANCHOR | ⊕ | ⊕ DITCH (SOUTH & EAST) | ⊕ |
| ⊕ | CULVERT | ⊕ | LIGHT STANDARD | | | |
| ⊕ | ANODE | ⊕ | TREE | | | |
| EXISTING | LEGEND-PLAN | PROPOSED | EXISTING | LEGEND-PLAN | PROPOSED | EXISTING |
| | | | | LEGEND-PROFILE | PROPOSED | |

| LOCATION APPROVED UNDERGROUND STRUCTURES | |
|---|------|
| SUPV. U/O STRUCTURES COMMITTEE | DATE |
| NOTE: LOCATION OF UNDERGROUND STRUCTURES AS SHOWN ARE BASED ON THE BEST INFORMATION AVAILABLE BUT NO GUARANTEE IS GIVEN THAT THE GIVEN LOCATIONS ARE EXACT. CONFIRMATION OF EXISTENCE AND EXACT LOCATION OF ALL SERVICES MUST BE OBTAINED FROM THE INDIVIDUAL UTILITIES BEFORE PROCEEDING WITH CONSTRUCTION. | |

| CITY OF WINNIPEG WATER AND WASTE ENGINEERING DIVISION | | | |
|---|-----------------------------|---------------------------|------|
| DESIGNED BY | SC | CHECKED BY | TW |
| DRAWN BY | CJH | APPROVED BY | KZ |
| HOR. SCALE | 1:250 | RELEASED FOR CONSTRUCTION | |
| VERTICAL | 1:50 | | |
| NO. REVISIONS | DATE | BY | DATE |
| 2.) | MH9 TO MH15 INVERT CHANGES | 05.04.14 | KZ |
| 1.) | REVISION - ADDED MH NUMBERS | 05.04.11 | SC |
| | | 2005 03 31 | |

ENGINEER'S SEAL
 ORIGINAL SIGNED BY K.R. ZUREK 05/03/31
 BID OPPORTUNITY: 93-2005
 PLOT DATE: 2005 04 14

THE CITY OF WINNIPEG WATER AND WASTE DEPARTMENT

NORTHEAST INTERCEPTOR
 STAGE VII
 BOURNAIS DRIVE
 38 m S OF SP PANDORA AVENUE TO
 44 m S OF SP GEORGE LAWRENCE BAY

SHEET 10 of 18
 CITY DRAWING NUMBER
 05542