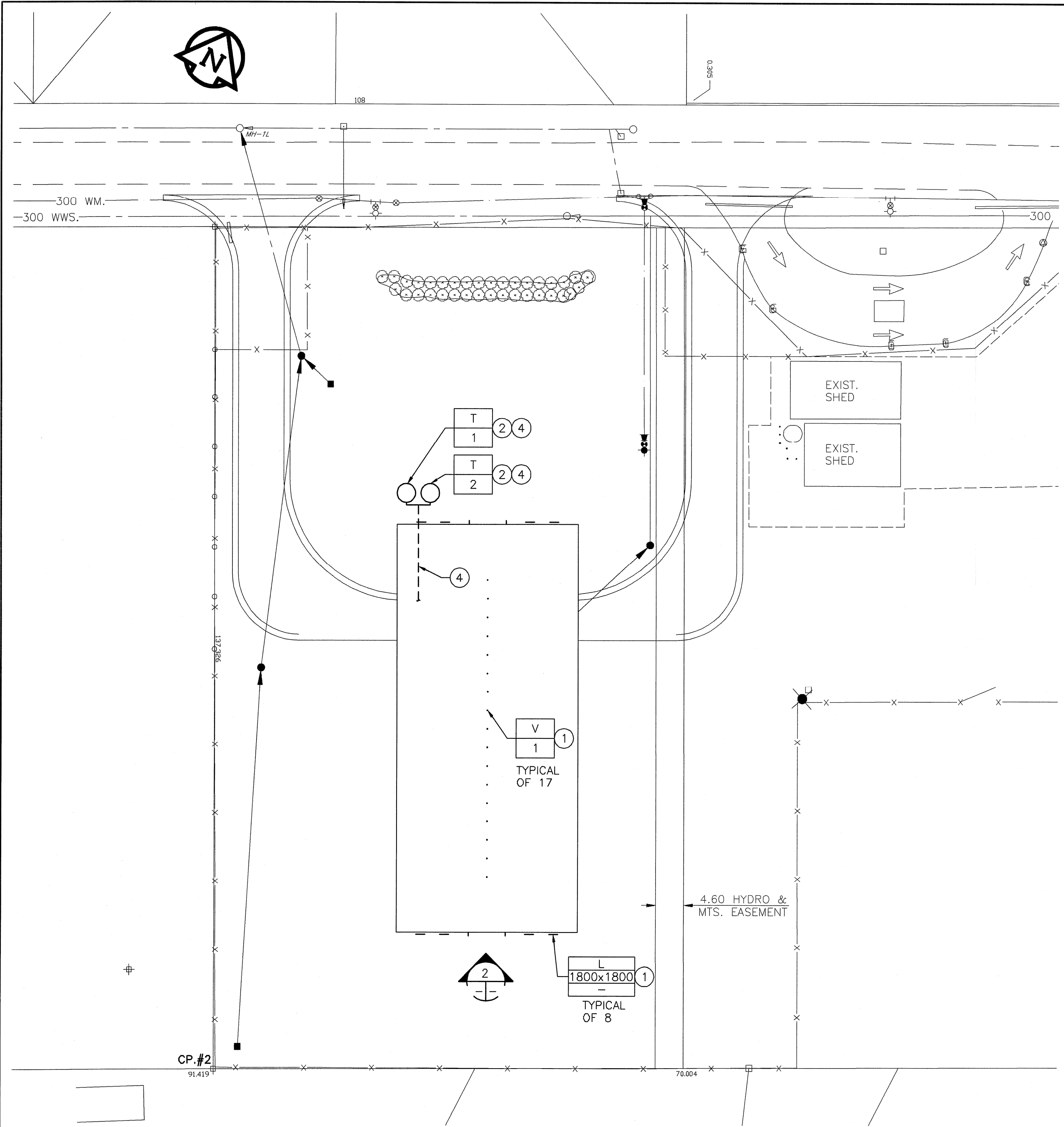
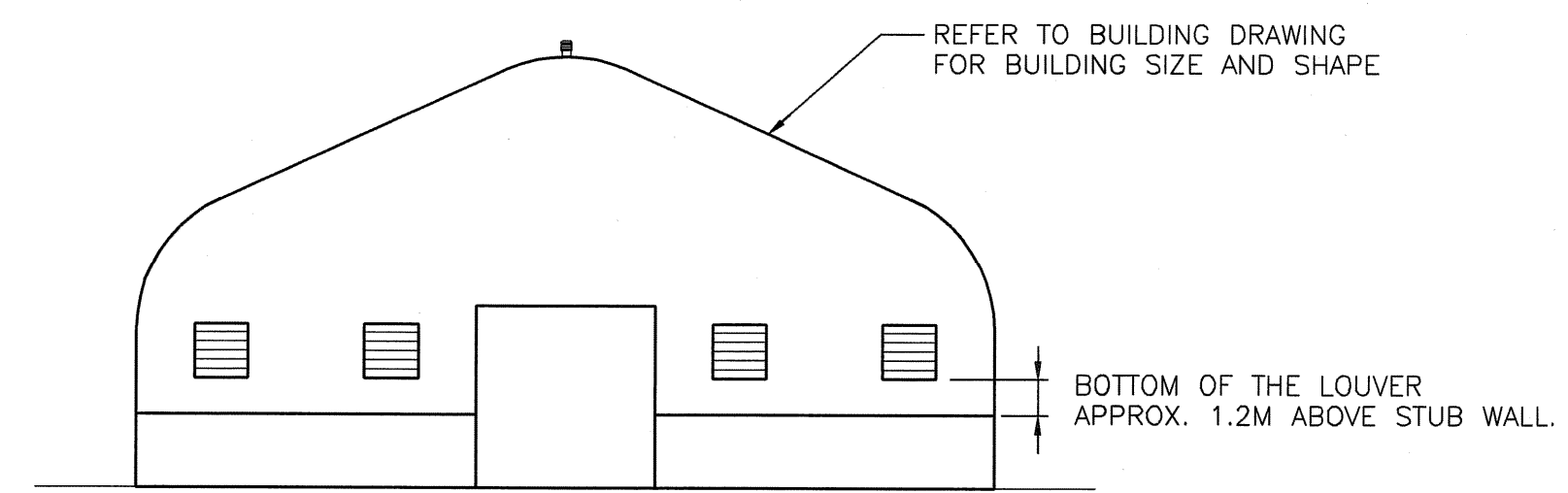


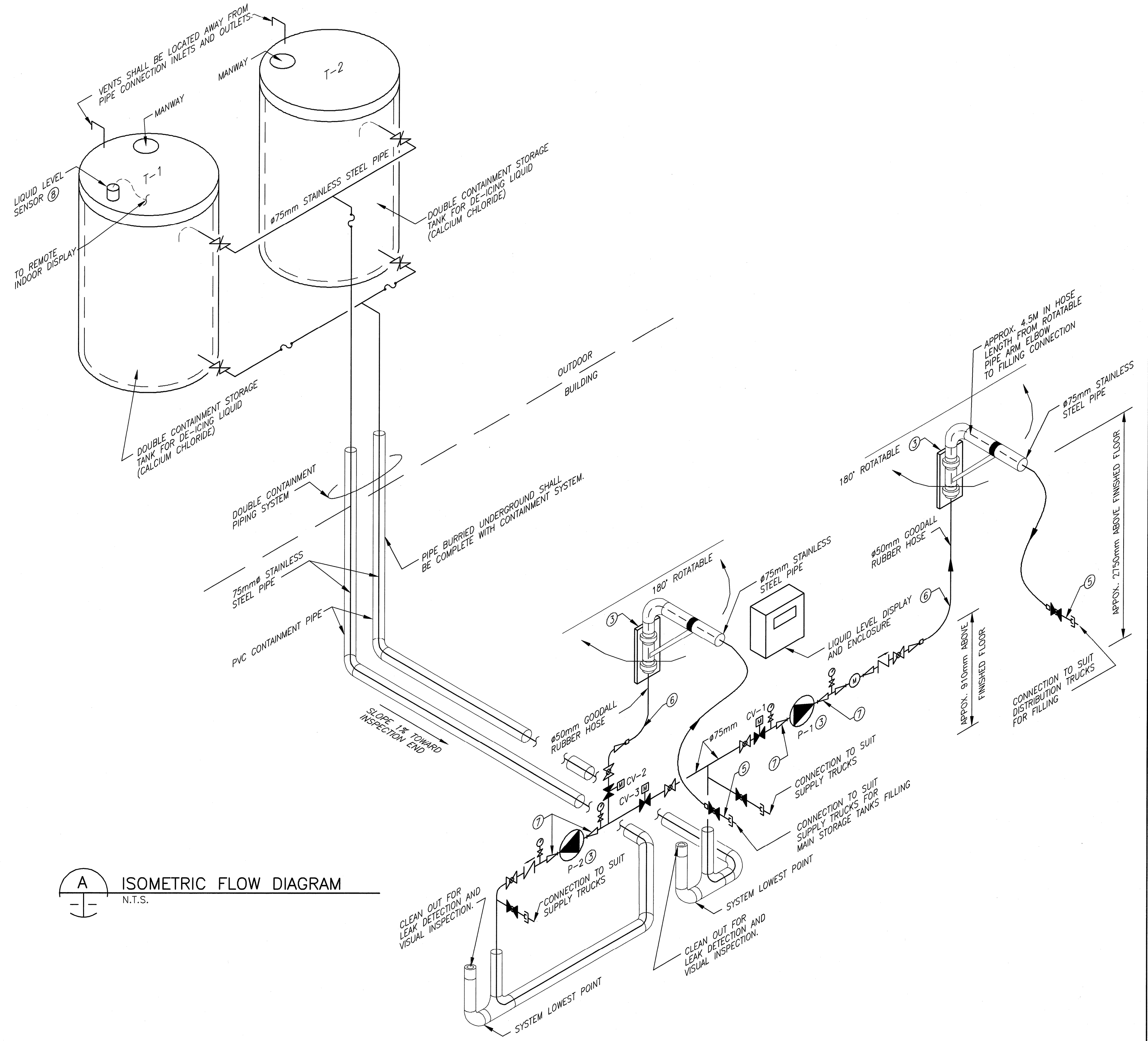
PLOT SCALE = 1:0.50
 AutoCAD 16.1s (LMS Tech) P:\02265\366-00\ALD\Scad_Salt_Facility_1539_Waverley.dwg\Mechanical\Site Plan.dwg 2005-01-20 11:57am CGC



1 PARTIAL SITE PLAN
 1:500



2 ELEVATION
 N.T.S.



A ISOMETRIC FLOW DIAGRAM
 N.T.S.

DRAWING NOTES:

- ① EQUIPMENT SHALL BE SECURED TO BUILDING STRUCTURAL SYSTEM. ALL EQUIPMENT AND SUPPORTING MATERIALS SHALL NOT HAVE SHARP EDGE OR CORNERS SO AS TO SUIT BUILDINGS MATERIAL AND FABRICATION. CO-ORDINATE REQUIREMENTS WITH BUILDING SUPPLIER.
- ② DE-ICING LIQUID STORAGE TANKS TO BE MOUNTED ON CONCRETE PAD. REFER TO BUILDING DRAWINGS FOR FURTHER INFORMATION.
- ③ PROVIDE SUPPORTS TO SECURE PIPING, PUMP, AND EQUIPMENT TO CONCRETE STUB WALL. TYPICAL.
- ④ REFER TO **A** FOR FURTHER INFORMATION.
- ⑤ PROVIDE SIMPLE HOSE HOLDING DEVICES ON CONCRETE STUB WALL FOR HOLDING THE HOSES IN PLACE WHEN THEY ARE UN-USED AND FOR SUPPORTING VALVE AND CONNECTION FITTINGS, SO THAT THE HOSE WILL NOT CARRY THE WEIGHT OF THE VALVE AND FITTING DURING SYSTEM IDLE PERIOD.
- ⑥ LONG SMOOTH TRUN AS PER HOSE MANUFACTURER'S RECOMMENDATIONS.
- ⑦ PROVIDE FLANGE CONNECTIONS FOR EASY EQUIPMENT SERVICE. TYPICAL.
- ⑧ LIQUID LEVEL SENSOR SHALL BE LOCATED AS PER SENSOR MANUFACTURER'S RECOMMENDATIONS. CONTRACTOR TO COORDINATE SENSOR LOCATION, CONNECTION FITTING REQUIREMENTS WITH THE TANK MANUFACTURER.

NOTE:
 1. SYSTEMS LAYOUTS SHOWN IN THE TENDER DRAWINGS ARE FOR REFERENCE PURPOSE. THE CONTRACTOR IS RESPONSIBLE FOR DESIGN AND PROVIDE CODE COMPLIANT, FULLY FUNCTIONAL SYSTEMS TO SUIT APPLICATION. SYSTEMS SHALL MEET OR EXCEED ALL REQUIREMENTS DESCRIBED IN THE CONTRACT DOCUMENT. THE CONTRACTOR IS RESPONSIBLE FOR ALL DOCUMENT SUBMISSION TO OBTAIN APPROVAL FROM THE CITY.
 2. ALL MATERIALS SHALL BE SUITABLE FOR SALT, SAND, AND DE-ICING LIQUID HANDLING ENVIRONMENT (CORROSIVE).

LOCATION UNDERGROUND	APPROVED STRUCTURES	B.M. ELEV.	DATE	BY
SUPR. U/G STRUCTURES	COMMITTEE			
NOTE: LOCATION OF UNDERGROUND STRUCTURES AS SHOWN ARE BASED ON THE BEST INFORMATION AVAILABLE. BUT NO GUARANTEE IS GIVEN THAT ALL EXISTING UTILITIES ARE SHOWN OR THAT THE GIVEN LOCATIONS ARE EXACT. CONFIRMATION OF EXISTENCE AND EXACT LOCATION OF ALL SERVICES MUST BE OBTAINED FROM THE INDIVIDUAL UTILITIES BEFORE PROCEEDING WITH CONSTRUCTION.				
2	RE-ISSUED FOR BID	05Feb01	DML	
1	ISSUED FOR BID	04May25	CGC	
0	ISSUED FOR REVIEW	04May04	CGC	
NO.	REVISIONS	DATE	BY	

UMA Engineering Ltd.
 Consulting • Engineering • Construction • Management Services

DESIGNED BY: WY	CHECKED BY: [Signature]
DRAWN BY: ALG	APPROVED BY: [Signature]
HOR. SCALE: AS SHOWN	RELEASED FOR CONSTRUCTION
VERTICAL: N/A	DATE: 04/02/12

ENGINEER'S SEAL
PROVINCE OF MANITOBA
W. Y. YUEN
 05/02/12
 REGISTERED PROFESSIONAL ENGINEER
 CONSULTANT DRAWING NO. 41-09-0265-366-00

THE CITY OF WINNIPEG
 PUBLIC WORKS DEPARTMENT
 ENGINEERING DIVISION

SAND/SALT STORAGE FACILITY
 PUBLIC WORKS YARD
 1539 WAVERLEY STREET

MECHANICAL
 PARTIAL SITE PLAN & FLOW DIAGRAM

CITY DRAWING NUMBER 04
 SHEET 4 OF 11
 REV 04 2

BID OPPORTUNITY No. 9-2005

METRIC
 WHOLE NUMBERS INDICATE MILLIMETRES
 DECIMALIZED NUMBERS INDICATE METRES

APCGM
 Certificate of Authorization
 UMA Engineering Ltd.
 No. 256 Expiry: April 30, 2005