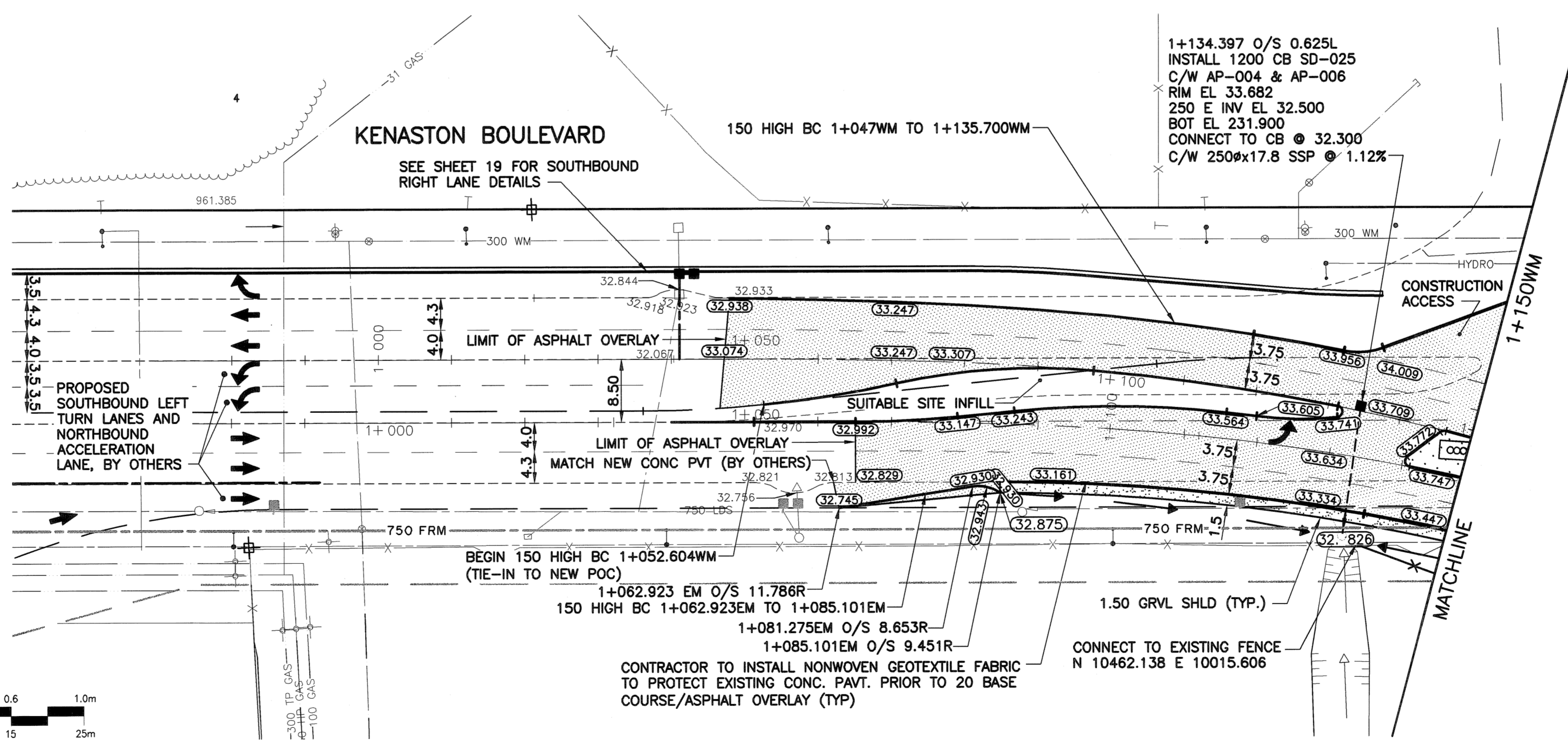
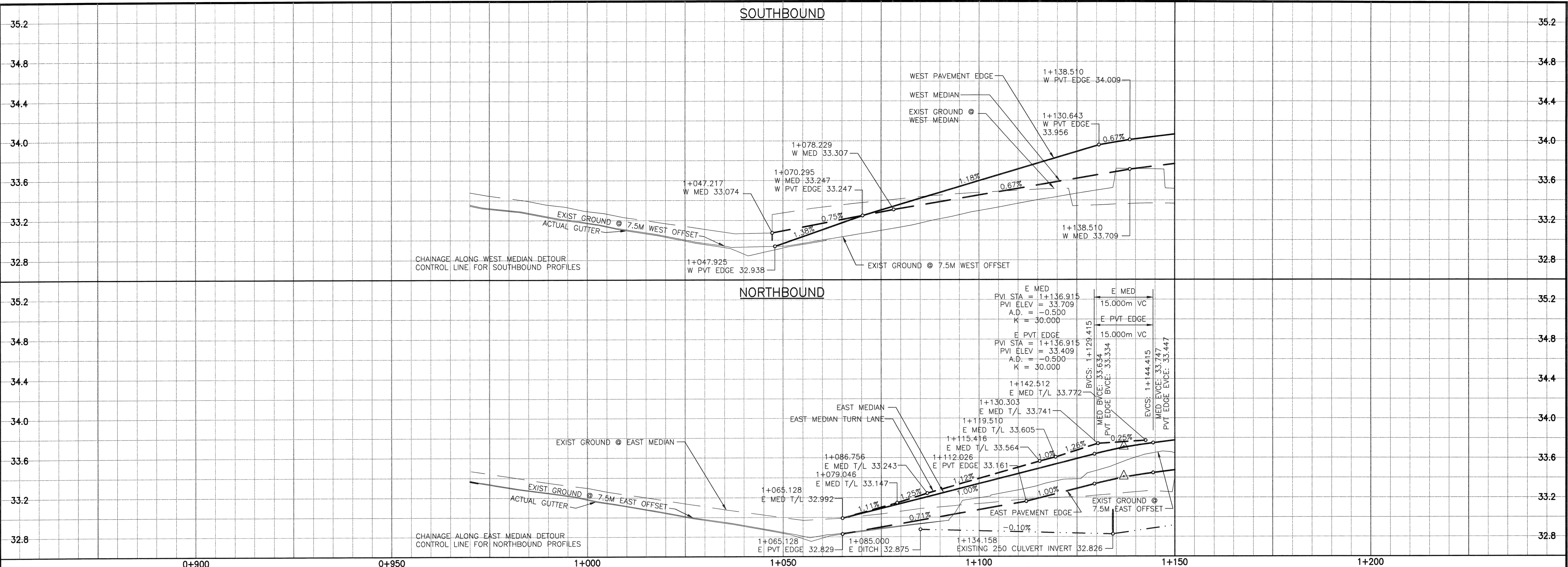


A1 SIZE 23.4" x 33.1" (594mm x 841mm)

PLOT: 05/04/12 10:06:26 AM

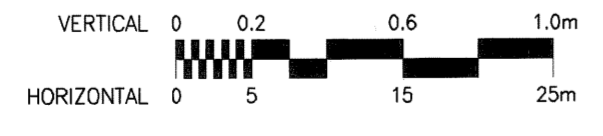
UMA FILE NAME: 4231-040-03_01-CT1030_RX.dwg Saved By: ddoezpod



- NOTE:**
1. TEMPORARY STREET LIGHTING TO BE INSTALLED BY MH.
 2. EXISTING STREET LIGHTING AND HIGH VOLTAGE TOWERS TO BE RELOCATED OR ABANDONED BY MH.
 3. TRAFFIC SIGNALS TO INSTALL TEMPORARY SIGNALS AT TAYLOR AVE. AND KENASTON DETOUR INTERSECTION.
 4. DND RELOCATION OF UTILITIES TO BE DONE BY OTHERS UNLESS OTHERWISE NOTED.
 5. CN TO INSTALL BALLAST, RAILS, AND SIGNALS AT DETOUR CROSSING DURING THIS CONTRACT DURATION.

METRIC
WHOLE NUMBERS INDICATE MILLIMETRES
DECIMALIZED NUMBERS INDICATE METRES

WARNING
IF POWER EQUIPMENT OR EXPLOSIVES ARE TO BE USED FOR EXCAVATION ON THIS PROJECT THE CONTRACTOR MUST:
1) NOTIFY THE GAS COMPANY OF THE PROPOSED LOCATION OF EXCAVATION.
2) TAKE PRECAUTION TO AVOID DAMAGE TO GAS COMPANY INSTALLATIONS.
SEE PROVINCIAL REGULATION 140/92 FOR DETAILS



EXISTING	LEGEND - PLAN	NEW	EXISTING	LEGEND - PLAN	NEW	EXISTING	LEGEND - PLAN	NEW	EXISTING	LEGEND - PLAN	NEW
---	GAS	○	○	MANHOLE	●	---	CONCRETE PAVEMENT	▨	---	LOCATION APPROVED	□
---	MTS	□	□	CATCH BASIN/CATCH PIT	■	---	CONC. SIDEWALK/MEDIAN	▨	---	UNDERGROUND STRUCTURES	▨
---	HYDRO	△	△	C & G INLET WITH BOX	▲	---	ASPHALT PAVEMENT	▨	---	SUPV. U/G STRUCTURES	□
---	CATV	⊙	⊙	TREE	⊙	---	ASPHALT APPROACH	▨	---	COMMITTEE	□
---	TRAFFIC SIGNALS	⊙	⊙	TEST HOLE	⊙	---	ASPHALT SHOULDER	▨	---	DATE	---
---	LAND DRAINAGE SEWER	---	---	PROPERTY LINE	---	---	GRAVEL SHOULDER	▨	---	NOTE:	---
---	SANITARY/COMBINED SEWER	---	---	SURVEY BAR	---	---	RAMP CURB	▨	---	LOCATION OF UNDERGROUND STRUCTURES AS SHOWN ARE BASED ON THE BEST INFORMATION AVAILABLE BUT NO GUARANTEE IS GIVEN THAT ALL EXISTING UTILITIES ARE SHOWN OR THAT THE GIVEN LOCATIONS ARE EXACT. CONFIRMATION OF EXISTENCE AND EXACT LOCATION OF ALL SERVICES MUST BE OBTAINED FROM THE INDIVIDUAL UTILITIES BEFORE PROCEEDING WITH CONSTRUCTION.	---
---	CATCHBASIN LEAD	---	---	GEODETTIC MONUMENT	---	---	REMOVAL	▨	---	B.M. GBM67-002	---
---	WATERMAIN	---	---	FENCE	---	---	SIGN	▨	---	ELEV. 233.951	---
---	SUBDRAIN	---	---	B.O. CURB/E.O. PAVEMENT	---	---	POLE	▨	---	DESIGNED BY	---
---	DITCH/SWALE	---	---	ELEVATION	---	---	RAIL SIGNALS/SIGNS	▨	---	BY	---
---	EXISTING	---	---	LEGEND - PLAN	---	---	NEW	---	---	DATE	---
---	NEW	---	---	LEGEND - PLAN	---	---	NEW	---	---	DATE	---

NO.	REVISIONS	DATE	BY
0	ISSUED FOR CONSTRUCTION	05/04/19	DL
A	ISSUED FOR CLIENT REVIEW	05/02/28	DL

UMA
An AECOM Company
2005 UMA ENGINEERING LTD. ALL RIGHTS RESERVED.

DESIGNED BY: RPB
DRAWN BY: DID, DL
CHECKED BY: JOK
APPROVED BY: [Signature]
AUTHORIZED BY: [Signature]
R. FINGAS/ENGR.
BRIDGE PROJECTS ENGINEER

HOR. SCALE: 1:500
VERTICAL: 1:20

DATE: 05/04/19

ENGINEER'S SEAL
PROVINCE OF MANITOBA
R. P. BRUCE
REGISTERED PROFESSIONAL ENGINEER

CONSULTANT DRAWING NO.
4231-040-03-34

THE CITY OF WINNIPEG
PUBLIC WORKS DEPARTMENT
ENGINEERING DIVISION

Winnipeg

KENASTON UNDERPASS PROJECT
KENASTON BOULEVARD ROAD DETOUR

HORIZONTAL AND VERTICAL ALIGNMENT
STA. 0+950 TO STA. 1+150

BID OPPORTUNITY
No. 84-2005

Certificate of Authorization
UMA Engineering Ltd.
No. 256 Expiry: April 30, 2005

SHEET 34 OF 61
CAD FILE DRAWING NUMBER
01-CT1030_RX
CITY DRAWING NUMBER
P-3258-94