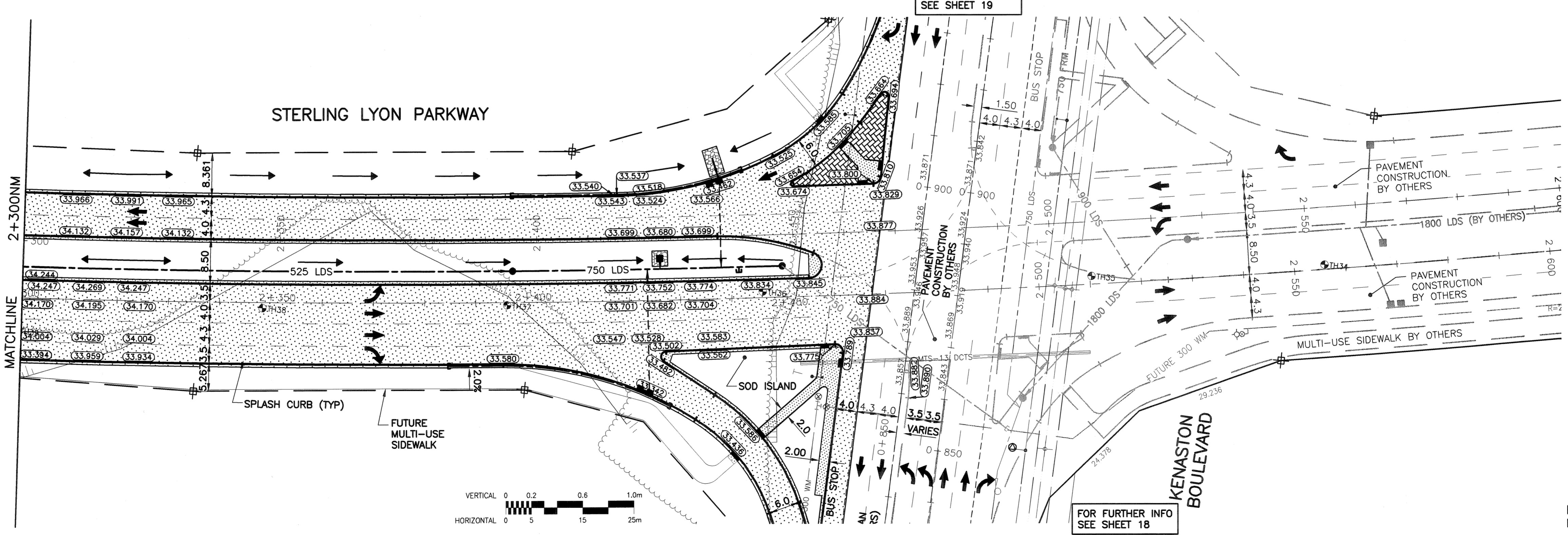
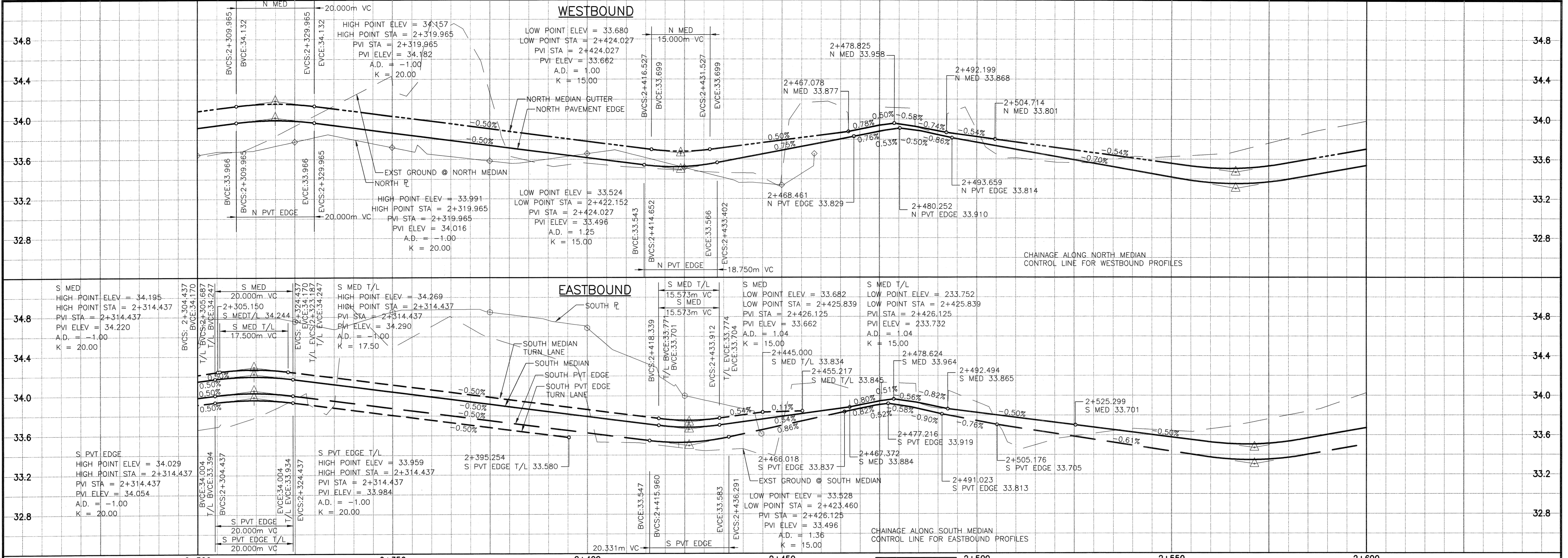


A1 SIZE 23.4" x 33.1" (594mm x 841mm)
 PLOT: 05/04/14 8:22:22 AM
 UMA FILE NAME: 4231-040-01-CT1013_RX.dwg Saved By: drosspood



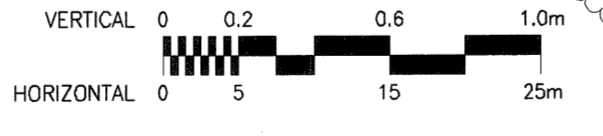
- NOTES:**
- SEE SHEET 28 FOR LAND DRAINAGE SYSTEM INFORMATION.
 - CLEAR & GRUB EXISTING TREES/BUSH TO PROPOSED PROPERTY LINE.
 - SEE SHEET 59 FOR LANDSCAPE DETAILS AT TRAFFIC ISLANDS.

METRIC

WHOLE NUMBERS INDICATE MILLIMETRES
 DECIMALIZED NUMBERS INDICATE METRES

WARNING

IF POWER EQUIPMENT OR EXPLOSIVES ARE TO BE USED FOR EXCAVATION ON THIS PROJECT THE CONTRACTOR MUST:
 1) NOTIFY THE GAS COMPANY OF THE PROPOSED LOCATION OF EXCAVATION.
 2) TAKE PRECAUTION TO AVOID DAMAGE TO GAS COMPANY INSTALLATIONS.
 SEE PROVINCIAL REGULATION 140/92 FOR DETAILS



	GAS		MANHOLE		CONCRETE PAVEMENT
	MTS		CATCH BASIN/CATCH PIT		CONC. SIDEWALK/MEDIAN
	HYDRO		C & G INLET WITH BOX		ASPHALT PAVEMENT
	CATV		TREE		ASPHALT APPROACH
	TRAFFIC SIGNALS		TEST HOLE		ASPHALT SHOULDER
	LAND DRAINAGE SEWER		PROPERTY LINE		GRAVEL SHOULDER
	SANITARY/COMBINED SEWER		SURVEY BAR		RAMP CURB
	CATCHBASIN LEAD		GEODETIC MONUMENT		REMOVAL
	WATERMAIN		FENCE		SIGN
	SUBDRAIN		B.O. CURB/E.O. PAVEMENT		POLE
	DITCH/SWALE		ELEVATION		RAIL SIGNALS/SIGNS
	EXISTING		LEGEND - PLAN		NEW

LOCATION APPROVED UNDERGROUND STRUCTURES

SUPV. U/G STRUCTURES COMMITTEE DATE

NOTE:
 LOCATION OF UNDERGROUND STRUCTURES AS SHOWN ARE BASED ON THE BEST INFORMATION AVAILABLE BUT NO GUARANTEE IS GIVEN THAT ALL EXISTING UTILITIES ARE SHOWN OR THAT THE GIVEN LOCATIONS ARE EXACT. CONFIRMATION OF EXISTENCE AND EXACT LOCATION OF ALL SERVICES MUST BE OBTAINED FROM THE INDIVIDUAL UTILITIES BEFORE PROCEEDING WITH CONSTRUCTION.

B.M. 02M67-001
 ELEV. 234.148

ISSUED FOR CONSTRUCTION	05/04/19	DL
ISSUED FOR CLIENT REVIEW	05/02/28	DL
NO. REVISIONS	DATE	BY

UMA
 An AECOM Company

2005 UMA ENGINEERING LTD. ALL RIGHTS RESERVED.

DESIGNED BY	WRJ	CHECKED BY	RFB
DRAWN BY	DID, DL	APPROVED BY	RFB
AUTHORIZED BY	R. FINGAS P. ENG.	DATE	05-04-19
BRIDGE PROJECTS ENGINEER			

HOR. SCALE: 1:500
 VERTICAL: 1:20
 DATE 05/04/19

ENGINEER'S SEAL

PROVINCE OF MANITOBA

BRUCE W. BIGLOW
 05-04-13
 REGISTERED PROFESSIONAL ENGINEER

CONSULTANT DRAWING NO.
 4231-040-01-15

THE CITY OF WINNIPEG
 PUBLIC WORKS DEPARTMENT
 ENGINEERING DIVISION

Winnipeg

KENASTON UNDERPASS PROJECT
 STERLING LYON PARKWAY WEST OF
 KENASTON BOULEVARD

HORIZONTAL & VERTICAL ALIGNMENT
 STA. 2+300 TO KENASTON BLVD.

BID OPPORTUNITY
 No. 84-2005

Certificate of Authorization
 UMA Engineering Ltd.
 No. 256 Expiry: April 30, 2005

SHEET 15 OF 61
 CAD FILE DRAWING NUMBER 01-CT1013_RX
 CITY DRAWING NUMBER P-3258-75