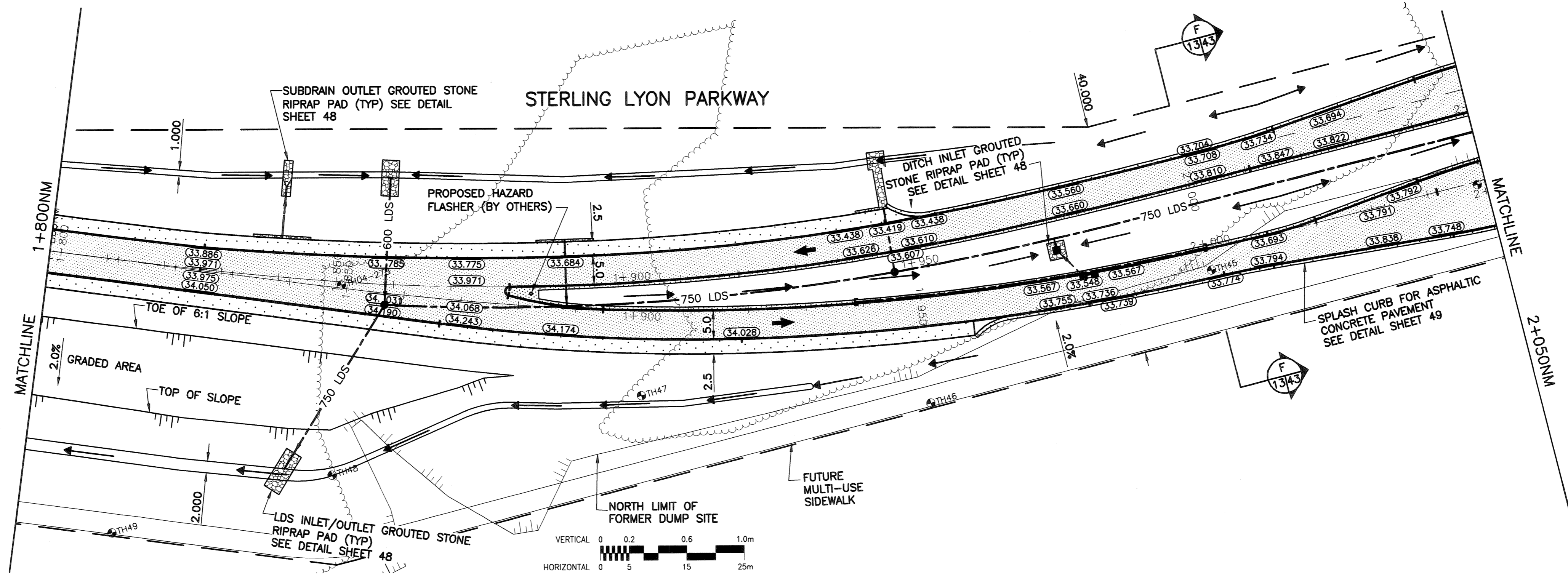
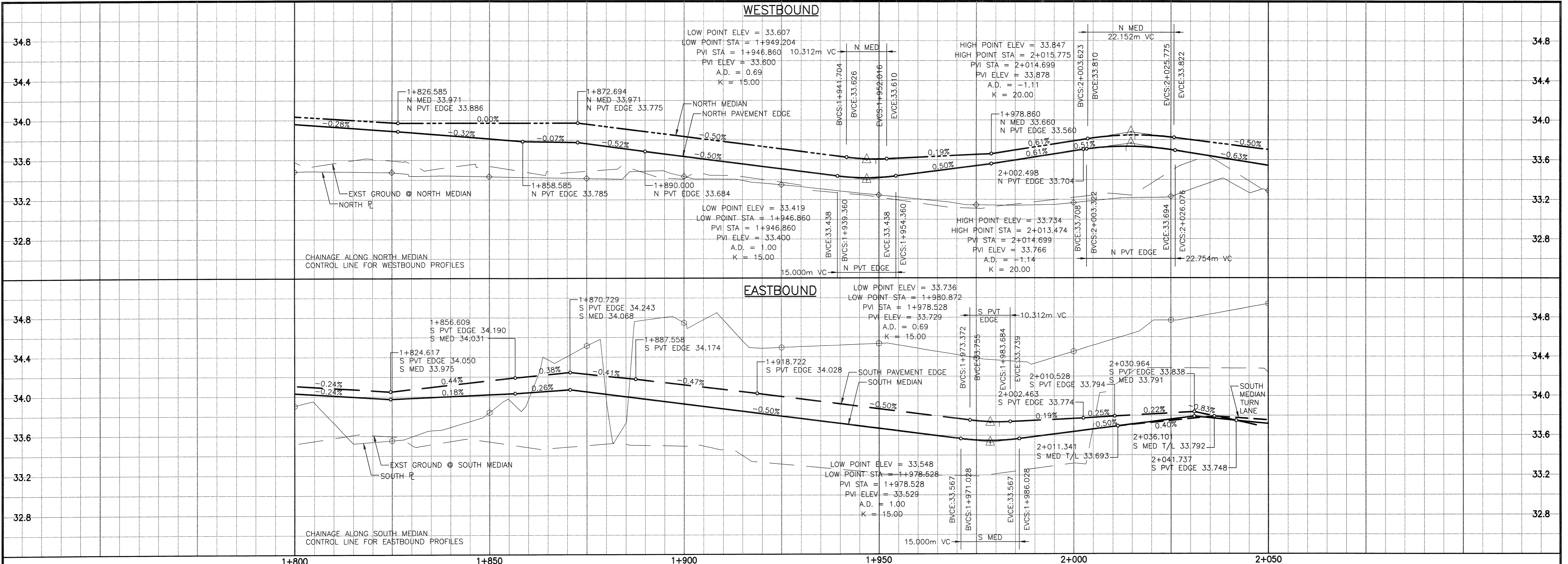


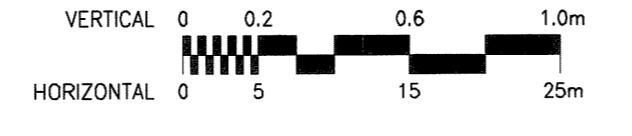
A1 SIZE 23.4" x 33.1" (594mm x 841mm) PLOT: 05/04/13 2:32:24 PM UMA FILE NAME: 4231-040-01-CT1011_RX.dwg Saved By: ddespood



- NOTES:**
- SEE SHEET 26 FOR LAND DRAINAGE SYSTEM INFORMATION.
 - CLEAR & GRUB EXISTING TREES/BUSH TO PROPOSED PROPERTY LINE.

METRIC
 WHOLE NUMBERS INDICATE MILLIMETRES
 DECIMALIZED NUMBERS INDICATE METRES

WARNING
 IF POWER EQUIPMENT OR EXPLOSIVES ARE TO BE USED FOR EXCAVATION ON THIS PROJECT THE CONTRACTOR MUST:
 1) NOTIFY THE GAS COMPANY OF THE PROPOSED LOCATION OF EXCAVATION.
 2) TAKE PRECAUTION TO AVOID DAMAGE TO GAS COMPANY INSTALLATIONS.
 SEE PROVINCIAL REGULATION 140/92 FOR DETAILS



EXISTING	LEGEND - PLAN	NEW	EXISTING	LEGEND - PLAN	NEW	EXISTING	LEGEND - PLAN	NEW
○	GAS	○	MANHOLE	●	CONCRETE PAVEMENT	▨	CONC. SIDEWALK/MEDIAN	▨
○	MTS	□	CATCH BASIN/CATCH PIT	■	ASPHALT PAVEMENT	▨	ASPHALT APPROACH	▨
○	HYDRO	△	C & G INLET WITH BOX	▲	ASPHALT SHOULDER	▨	GRAVEL SHOULDER	▨
○	CATV	⊙	TREE	⊙	RAMP CURB	▨	REMOVAL	▨
○	TRAFFIC SIGNALS	⊙	TEST HOLE	⊙	SIGN	▨	POLE	▨
○	LAND DRAINAGE SEWER	⊙	PROPERTY LINE	⊙	RAIL SIGNALS/SIGNS	▨		▨
○	SANITARY/COMBINED SEWER	⊙	SURVEY BAR	⊙		▨		▨
○	CATCHBASIN LEAD	⊙	GEODETIC MONUMENT	⊙		▨		▨
○	WATERMAIN	⊙	FENCE	⊙		▨		▨
○	SUBDRAIN	⊙	B.O. CURB/E.O. PAVEMENT	⊙		▨		▨
○	DITCH/SWALE	⊙	ELEVATION	⊙		▨		▨
○		⊙		⊙		▨		▨

LOCATION APPROVED UNDERGROUND STRUCTURES

SUPV. U/G STRUCTURES COMMITTEE DATE

NOTE:
 LOCATION OF UNDERGROUND STRUCTURES AS SHOWN ARE BASED ON THE BEST INFORMATION AVAILABLE BUT NO GUARANTEE IS GIVEN THAT ALL EXISTING UTILITIES ARE SHOWN OR THAT THE GIVEN LOCATIONS ARE EXACT. CONFIRMATION OF EXISTENCE AND EXACT LOCATION OF ALL SERVICES MUST BE OBTAINED FROM THE INDIVIDUAL UTILITIES BEFORE PROCEEDING WITH CONSTRUCTION.

B.M. 68467-001
 ELEV. 234.148

NO.	REVISIONS	DATE	BY
0	ISSUED FOR CONSTRUCTION	05/04/19	DL
A	ISSUED FOR CLIENT REVIEW	05/02/28	DL

UMA
 An AECOM Company

2005 UMA ENGINEERING LTD. ALL RIGHTS RESERVED.

DESIGNED BY: WRJ
 CHECKED BY: RBZ
 DRAWN BY: DID, DL
 APPROVED BY: RBZ

HOR. SCALE: 1:500
 VERTICAL: 1:20

DATE: 05/04/19

AUTHORIZED BY: R. FINGAS/PENG.
 BRIDGE PROJECTS ENGINEER

ENGINEER'S SEAL

PROVINCE OF MANITOBA
 REGISTERED PROFESSIONAL ENGINEER
 BRUCE W. BIGLOW
 25-01-13

CONSULTANT DRAWING NO.
 4231-040-01-13

THE CITY OF WINNIPEG
 PUBLIC WORKS DEPARTMENT
 ENGINEERING DIVISION

Winnipeg

KENASTON UNDERPASS PROJECT
 STERLING LYON PARKWAY WEST OF
 KENASTON BOULEVARD

HORIZONTAL & VERTICAL ALIGNMENT
 STA. 1+800 TO STA. 2+050

SHEET 13 OF 61
 CAD FILE DRAWING NUMBER 01-CT1011_RX
 CITY DRAWING NUMBER P-3258-73

BID OPPORTUNITY
 No. 84-2005

APECM
 Certificate of Authorization
 UMA Engineering Ltd.
 No. 256 Expiry: April 30, 2005