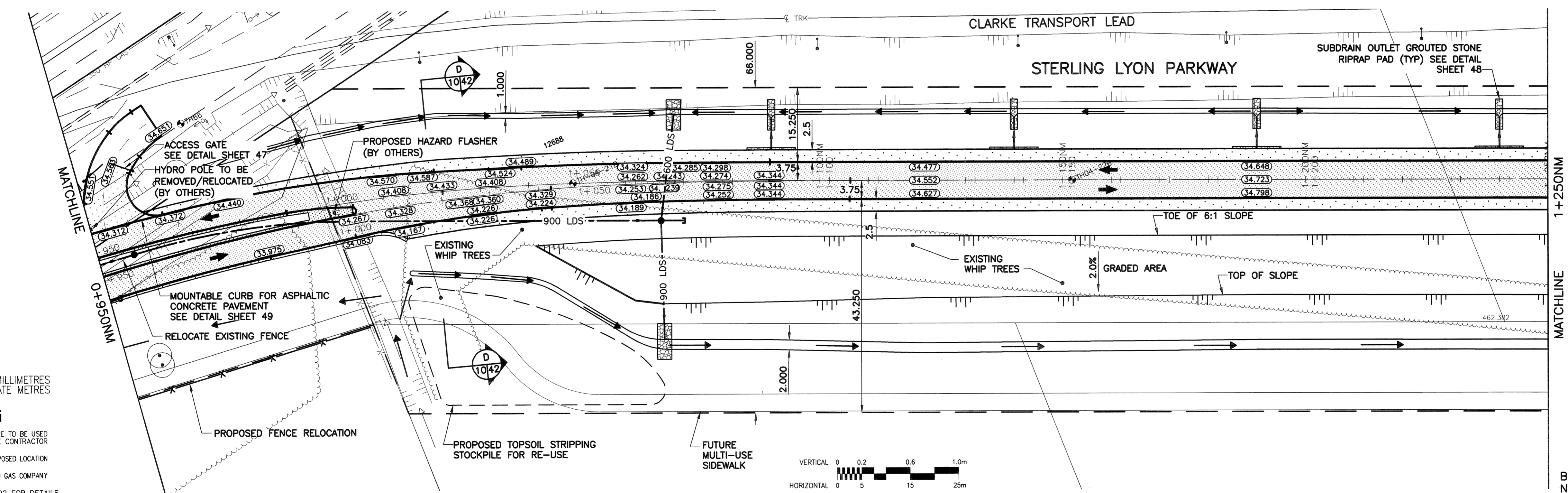
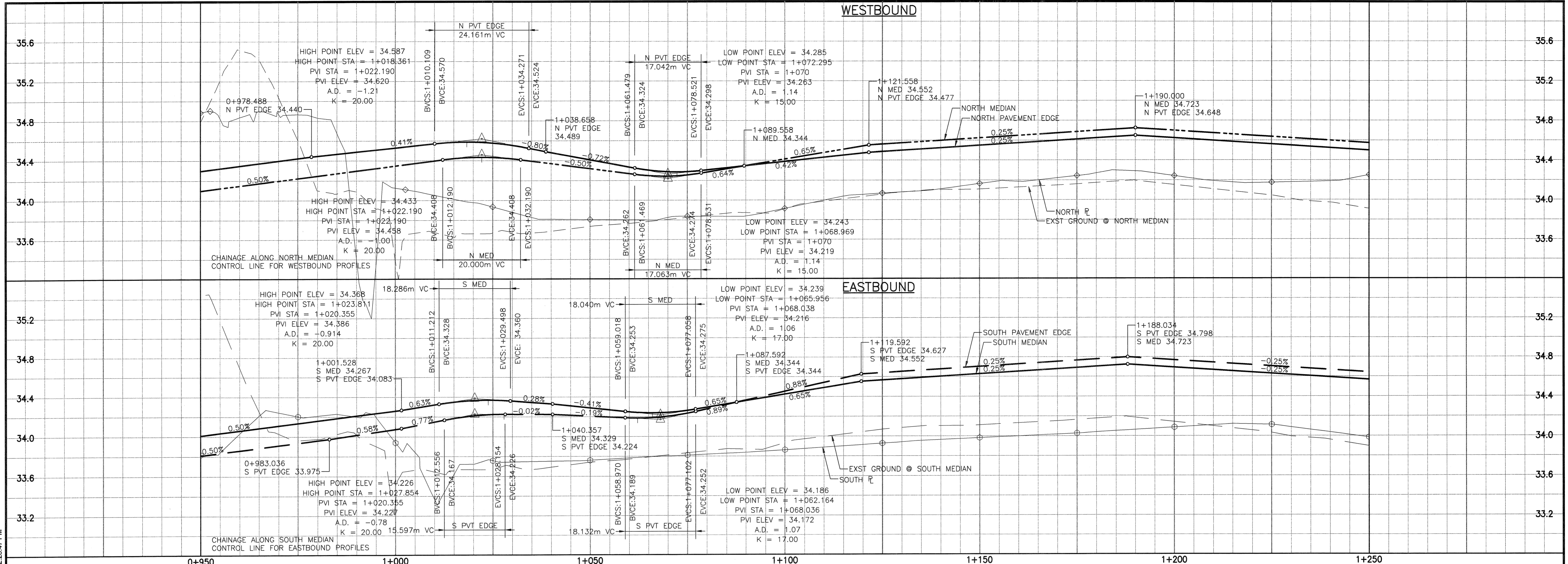


A1 SIZE 29.4" x 33.1" (694mm x 841mm)

PLOT: 05/04/13 2:26:47 PM

UMA FILE NAME: 4231-040-01-CT1008\_RX.dwg Saved By: ddozspod



- NOTES:**
- SEE SHEET 23 FOR LAND DRAINAGE SYSTEM INFORMATION.
  - CLEAR & GRUB EXISTING TREES/BUSH TO PROPOSED PROPERTY LINE.

**METRIC**

WHOLE NUMBERS INDICATE MILLIMETRES  
DECIMALIZED NUMBERS INDICATE METRES

**WARNING**

IF POWER EQUIPMENT OR EXPLOSIVES ARE TO BE USED FOR EXCAVATION ON THIS PROJECT THE CONTRACTOR MUST:

- NOTIFY THE GAS COMPANY OF THE PROPOSED LOCATION OF EXCAVATION.
- TAKE PRECAUTION TO AVOID DAMAGE TO GAS COMPANY INSTALLATIONS.

SEE PROVINCIAL REGULATION 140/92 FOR DETAILS

○	GAS	○	MANHOLE	●	CONCRETE PAVEMENT
□	MTS	□	CATCH BASIN/CATCH PIT	■	CONC. SIDEWALK/MEDIAN
△	HYDRO	△	C & G INLET WITH BOX	▨	ASPHALT PAVEMENT
◇	CATV	△	TREE	▨	ASPHALT APPROACH
⊕	TRAFFIC SIGNALS	⊕	TEST HOLE	▨	ASPHALT SHOULDER
⊕	LAND DRAINAGE SEWER	⊕	PROPERTY LINE	▨	GRAVEL SHOULDER
⊕	SANITARY/COMBINED SEWER	⊕	SURVEY BAR	▨	RAMP CURB
⊕	CATCHBASIN LEAD	⊕	GEODETIC MONUMENT	▨	REMOVAL
⊕	WATERMAIN	⊕	FENCE	▨	SIGN
⊕	SUBDRAIN	⊕	B.O. CURB/E.O. PAVEMENT	▨	POLE
⊕	DITCH/SWALE	⊕	ELEVATION	▨	RAIL SIGNALS/SIGNS
←	EXISTING	←	LEGEND - PLAN	⊕	EXISTING
→	NEW	→	LEGEND - PLAN	⊕	NEW

**LOCATION APPROVED UNDERGROUND STRUCTURES**

SUVP, U/G STRUCTURES COMMITTEE DATE

NOTE:  
LOCATION OF UNDERGROUND STRUCTURES AS SHOWN ARE BASED ON THE BEST INFORMATION AVAILABLE BUT NO GUARANTEE IS GIVEN THAT ALL EXISTING UTILITIES ARE SHOWN OR THAT THE GIVEN LOCATIONS ARE EXACT. CONFIRMATION OF EXISTENCE AND EXACT LOCATION OF ALL SERVICES MUST BE OBTAINED FROM THE INDIVIDUAL UTILITIES BEFORE PROCEEDING WITH CONSTRUCTION.

B.M. GBM67-001  
ELEV. 234.148

**UMA**  
An AECOM Company  
2005 UMA ENGINEERING LTD. ALL RIGHTS RESERVED.

DESIGNED BY	WRJ	CHECKED BY	RFB
DRAWN BY	DID,DL	APPROVED BY	BWB
ISSUED FOR CONSTRUCTION	05/04/19	DATE	
ISSUED FOR CLIENT REVIEW	05/02/28	DATE	
NO. REVISIONS		DATE	

HOR. SCALE: 1:500  
VERTICAL: 1:20

DATE 05/04/19

R. FINCAS P.ENG.  
BRIDGE PROJECTS ENGINEER

**ENGINEER'S SEAL**

PROVINCE OF MANITOBA  
BRUCE W. BIGLOW  
REGISTERED PROFESSIONAL ENGINEER

**THE CITY OF WINNIPEG**  
PUBLIC WORKS DEPARTMENT  
ENGINEERING DIVISION

**Winnipeg**

**KENASTON UNDERPASS PROJECT**  
STERLING LYON PARKWAY WEST OF  
KENASTON BOULEVARD

HORIZONTAL & VERTICAL ALIGNMENT  
STA. 0+950 TO STA. 1+250

BID OPPORTUNITY  
No. 84-2005

Certificate of Authorization  
UMA Engineering Ltd.  
No. 256 Expiry: April 30, 2005

SHEET 10 OF 61  
CAD FILE DRAWING NUMBER  
01-CT1008\_RX  
CITY DRAWING NUMBER  
P-3258-70