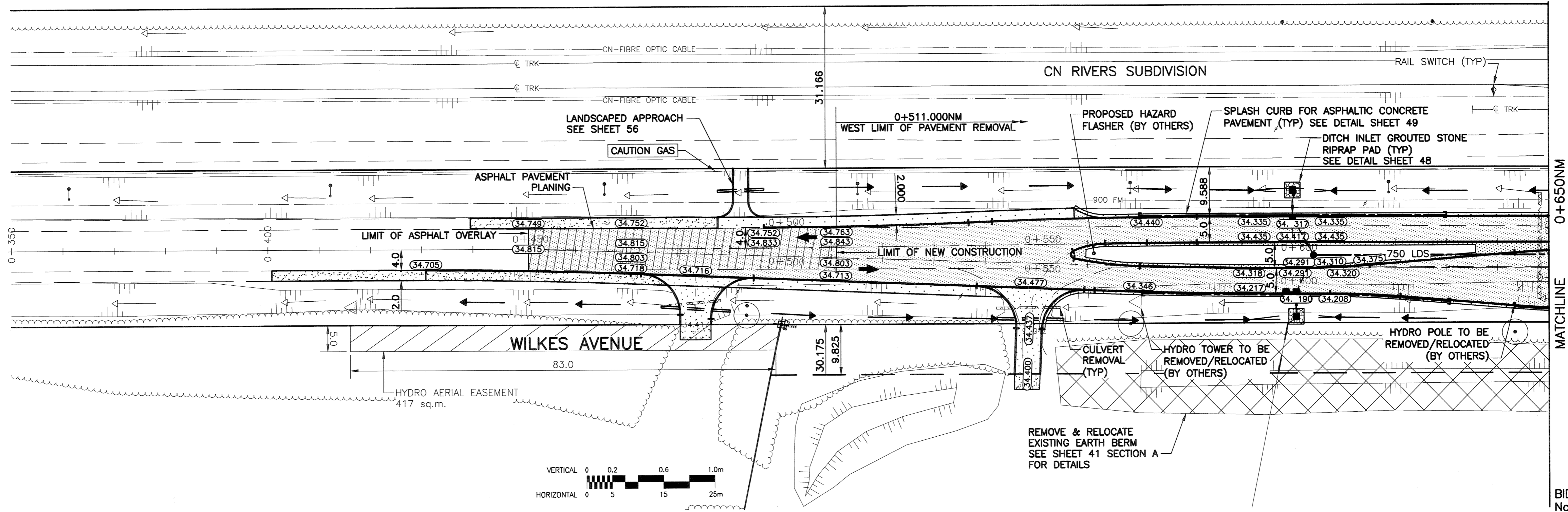
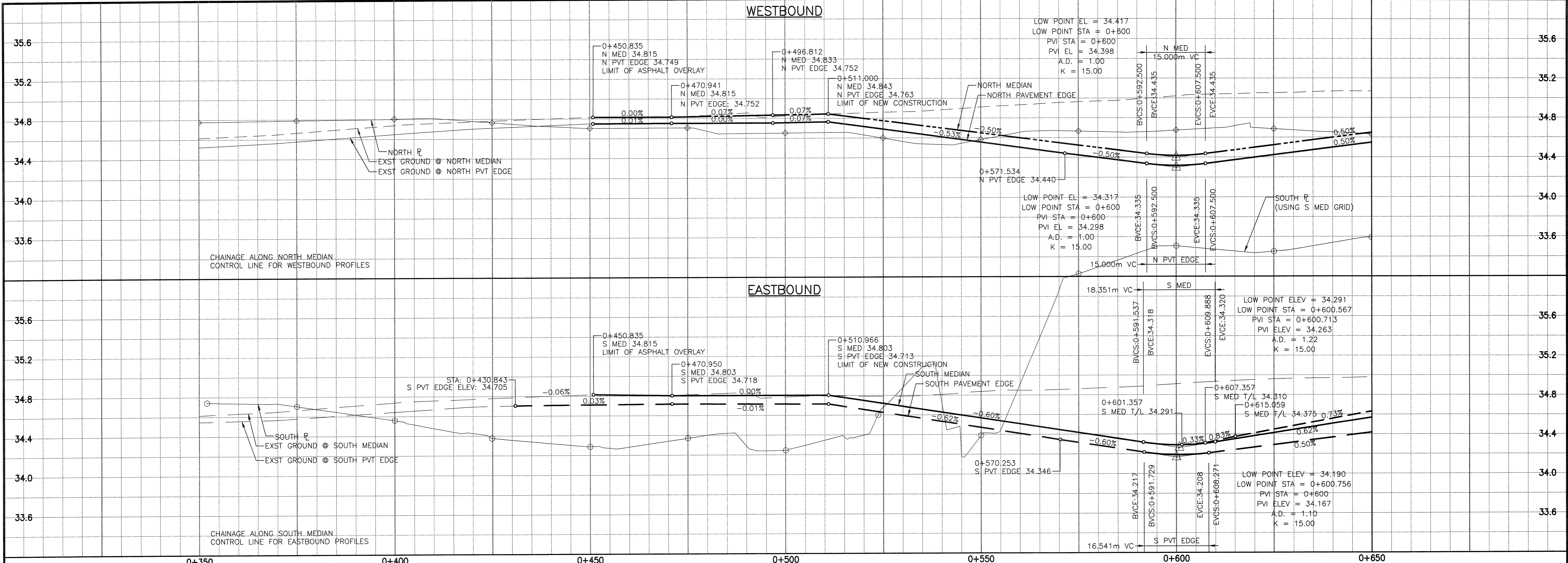


A1 SIZE 23.4" x 33.1" (594mm x 841mm)

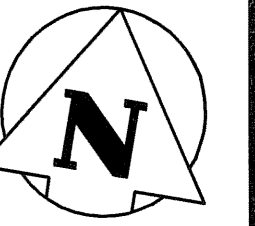
PLOT: 05/04/12 1:58:05 PM

UMA FILE NAME: 4231-040-01-01-CT1006\_RX.dwg Saved By: ddozspod



**NOTES:**

- SEE SHEET 21 FOR LAND DRAINAGE SYSTEM INFORMATION.
- CLEAR & GRUB EXISTING TREES/BUSH TO PROPOSED PROPERTY LINE.



**METRIC**

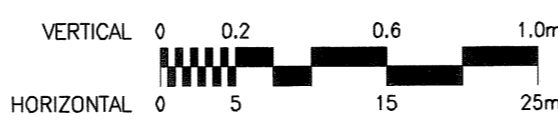
WHOLE NUMBERS INDICATE MILLIMETRES  
 DECIMALIZED NUMBERS INDICATE METRES

**WARNING**

IF POWER EQUIPMENT OR EXPLOSIVES ARE TO BE USED FOR EXCAVATION ON THIS PROJECT THE CONTRACTOR MUST:

- NOTIFY THE GAS COMPANY OF THE PROPOSED LOCATION OF EXCAVATION.
- TAKE PRECAUTION TO AVOID DAMAGE TO GAS COMPANY INSTALLATIONS.

SEE PROVINCIAL REGULATION 140/92 FOR DETAILS



○	GAS	○	MANHOLE	●	CONCRETE PAVEMENT
□	MTS	□	CATCH BASIN/CATCH PIT	■	CONC. SIDEWALK/MEDIAN
△	HYDRO	△	C & G INLET WITH BOX	▲	ASPHALT PAVEMENT
⊕	CATV	⊕	TREE	▬	ASPHALT APPROACH
⊕	TRAFFIC SIGNALS	⊕	TEST HOLE	▬	ASPHALT SHOULDER
⊕	LAND DRAINAGE SEWER	⊕	PROPERTY LINE	▬	GRAVEL SHOULDER
⊕	SANITARY/COMBINED SEWER	⊕	SURVEY BAR	▬	RAMP CURB
⊕	CATCHBASIN LEAD	⊕	GEODETTIC MONUMENT	▬	REMOVAL
⊕	WATERMAIN	⊕	FENCE	+	SIGN
⊕	SUBDRAIN	⊕	B.O.CURB/E.O.PAVEMENT	•	POLE
⊕	DITCH/SWALE	⊕	ELEVATION	⊕	RAIL SIGNALS/SIGNS
⊕	EXISTING	⊕	LEGEND - PLAN	⊕	NEW

**LOCATION APPROVED UNDERGROUND STRUCTURES**

SUPV. U/G STRUCTURES COMMITTEE DATE

**NOTE:**  
 LOCATION OF UNDERGROUND STRUCTURES AS SHOWN ARE BASED ON THE BEST INFORMATION AVAILABLE BUT NO GUARANTEE IS GIVEN THAT ALL EXISTING UTILITIES ARE SHOWN OR THAT THE GIVEN LOCATIONS ARE EXACT. CONFIRMATION OF EXISTENCE AND EXACT LOCATION OF ALL SERVICES MUST BE OBTAINED FROM THE INDIVIDUAL UTILITIES BEFORE PROCEEDING WITH CONSTRUCTION.

B.M. GBM67-001  
 ELEV. 234.148

DESIGNED BY	WRJ	CHECKED BY	RJB
DRAWN BY	DID,DL	APPROVED BY	BWB
ISSUED FOR CONSTRUCTION	05/04/19	DL	
ISSUED FOR CLIENT REVIEW	05/02/28	DL	
NO. REVISIONS	DATE	BY	

**UMA**  
 An AECOM Company

2005 UMA ENGINEERING LTD. ALL RIGHTS RESERVED.

DESIGNED BY WRJ  
 CHECKED BY RJB  
 DRAWN BY DID,DL  
 APPROVED BY BWB  
 AUTHORIZED BY R. FINGAS P. ENG.  
 DATE 05-04-19

ENGINEER'S SEAL

PROVINCE OF MANITOBA

BRUCE W. BIGLOW  
 05-04-13  
 REGISTERED PROFESSIONAL ENGINEER

CONSULTANT DRAWING NO.  
 4231-040-01-08

**THE CITY OF WINNIPEG**  
 PUBLIC WORKS DEPARTMENT  
 ENGINEERING DIVISION

**Winnipeg**

**KENASTON UNDERPASS PROJECT**  
 STERLING LYON PARKWAY WEST OF  
 KENASTON BOULEVARD

HORIZONTAL & VERTICAL ALIGNMENT  
 STA. 0+350 TO STA. 0+650

SHEET 8 OF 61  
 CAD FILE DRAWING NUMBER 01-CT1006\_RX  
 CITY DRAWING NUMBER P-3258-68

BID OPPORTUNITY No. 84-2005  
 Certificate of Authorization UMA Engineering Ltd. No. 256 Expiry: April 30, 2005