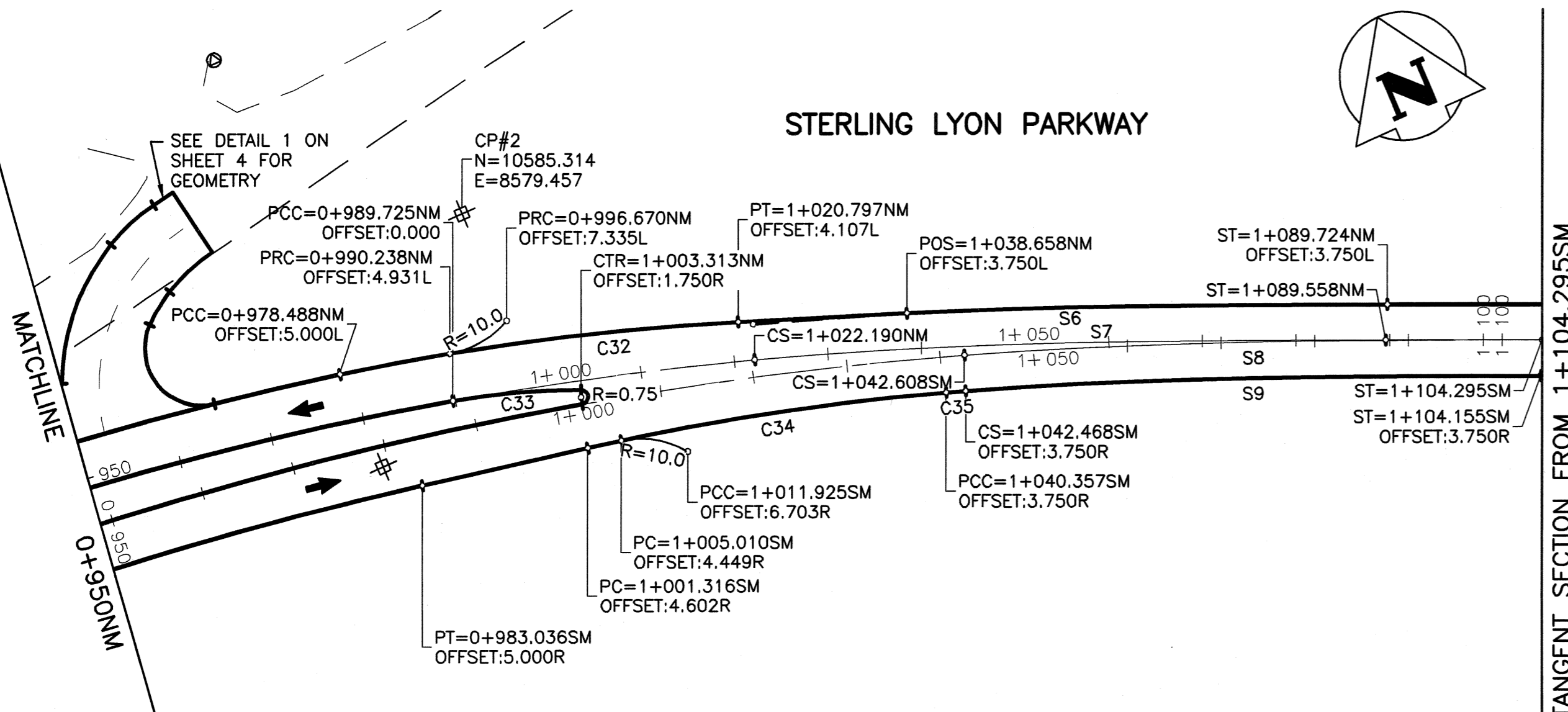


A1 SIZE 23.4" x 33.1" (594mm x 841mm)

PLOT: 05/04/11 3:32:16 PM

UMA FILE NAME: 4231-040-01_01-CT1002_RX.dwg Saved By: ddespood

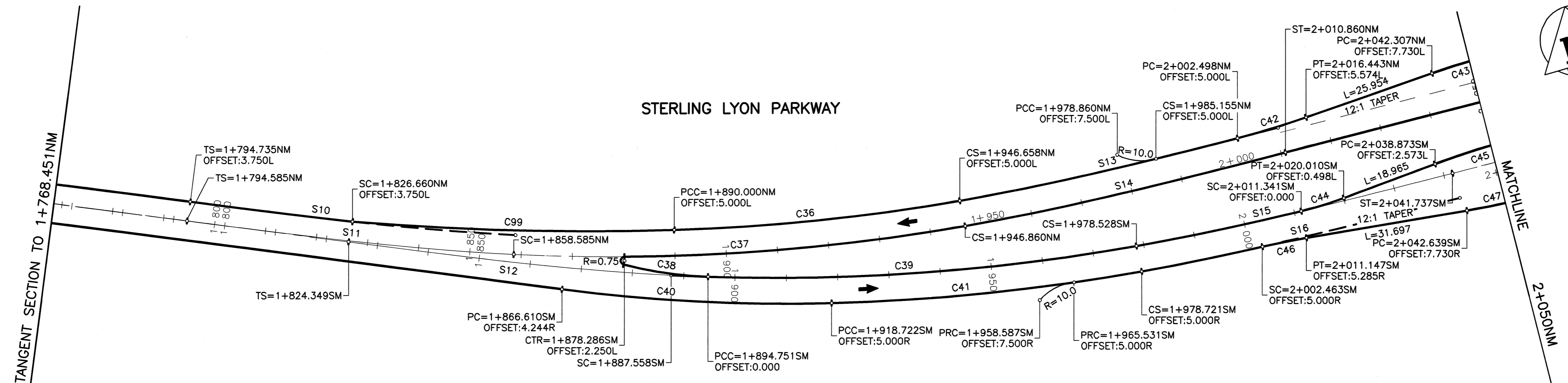
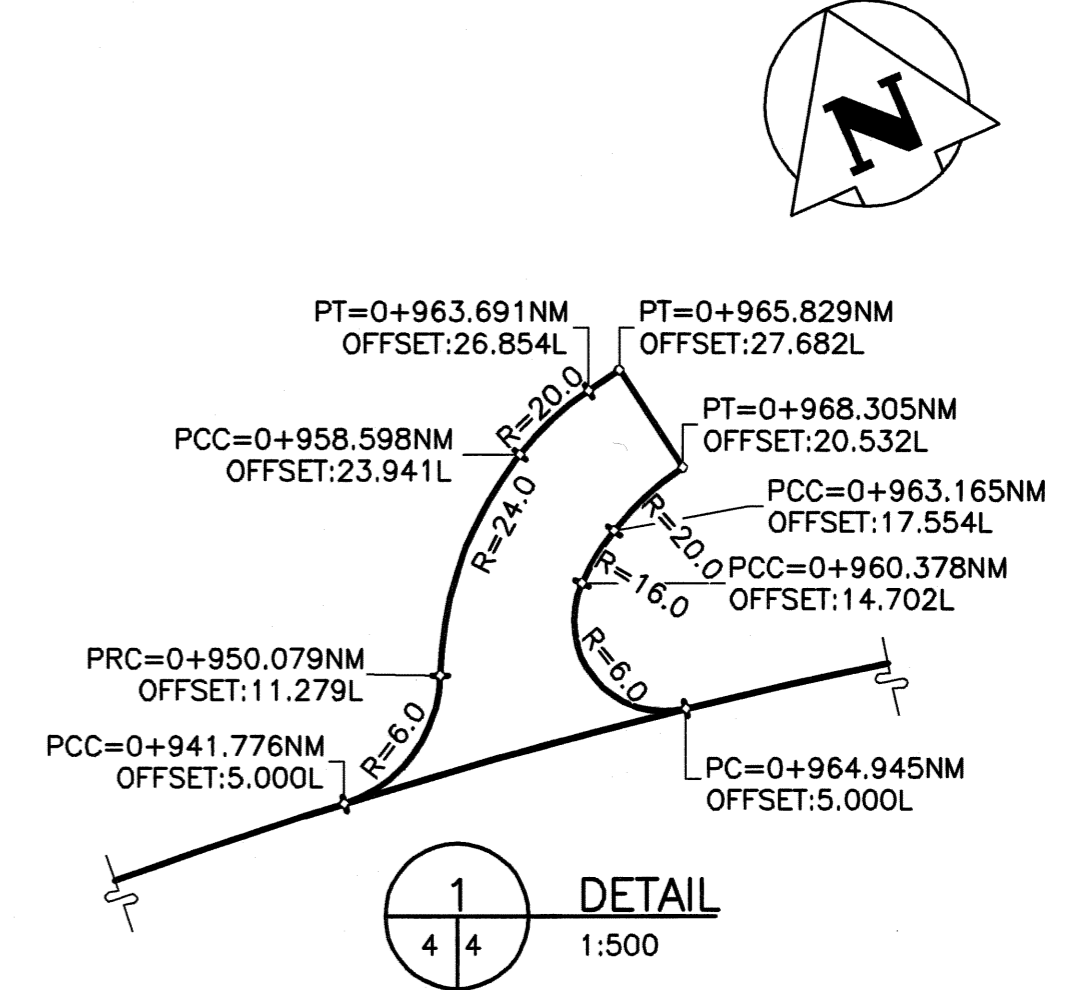


POINT	NORTHING	EASTING
CS=1+022.190	10558.630	8601.816
ST=1+089.558	10533.352	8664.236

POINT	NORTHING	EASTING
CS=1+042.608	10550.049	8622.475
ST=1+104.295	10526.628	8679.526

SPIRAL CURVE DATA				
SPIRAL	LENGTH	THETA	S TANGENT	L TANGENT
S6	67.700	5'03'14"	22.583	45.152
S7	67.368	5'04'44"	22.473	44.931
S8	61.687	4'15'30"	20.573	41.136
S9	61.407	4'16'40"	20.480	40.950

CIRCULAR CURVE DATA				
CURVE	LENGTH	RADIUS	DELTA	TANGENT
C32	42.845	280.000	8'46'02"	21.464
C33	13.736	75.000	10'29'37"	6.887
C34	38.674	280.000	7'54'50"	19.368
C35	2.091	411.250	0'17'29"	1.046



CIRCULAR CURVE DATA				
CURVE	LENGTH	RADIUS	DELTA	TANGENT
C36	55.950	395.000	8'06'57"	28.022
C37	88.276	400.000	12'38'40"	44.318
C38	16.676	75.000	12'44'21"	8.372
C39	90.969	405.000	12'52'10"	45.677
C40	52.695	340.000	8'52'48"	26.400
C41	60.739	410.000	8'29'17"	30.425
C42	13.954	165.000	4'50'44"	6.981
C43	13.723	165.000	4'45'54"	6.865
C44	8.687	70.000	7'06'38"	4.349
C45	17.501	165.000	6'04'38"	8.759
C46	8.751	165.000	3'02'19"	4.376
C47	13.718	165.000	4'45'49"	6.863
C99	62.734	560.000	6'25'07"	31.400

SPIRAL CURVE DATA				
SPIRAL	LENGTH	THETA	S TANGENT	L TANGENT
S10	63.699	4'36'19"	21.246	42.481
S11	64.000	4'35'01"	21.346	42.681
S12	63.210	4'28'16"	21.082	42.153
S13	63.599	4'36'45"	21.213	42.414
S14	64.000	4'35'01"	21.346	42.681
S15	63.210	4'28'16"	21.082	42.153
S16	63.599	4'26'38"	21.212	42.413

STERLING LYON PARKWAY NORTH MEDIAN CONTROL		
POINT	NORTHING	EASTING
TS=1+794.585	10249.531	9309.610
SC=1+858.585	10225.345	9368.845
CS=1+946.860	10205.778	9454.741
ST=2+010.860	10201.922	9518.606

STERLING LYON PARKWAY SOUTH MEDIAN CONTROL		
POINT	NORTHING	EASTING
TS=1+824.349	10236.757	9338.656
SC=1+887.558	10212.831	9397.144
CS=1+978.528	10192.668	9485.655
ST=2+041.737	10188.901	9548.735



LOCATION APPROVED UNDERGROUND STRUCTURES

SUPV. U/G STRUCTURES COMMITTEE DATE

NOTE:
LOCATION OF UNDERGROUND STRUCTURES AS SHOWN ARE BASED ON THE BEST INFORMATION AVAILABLE BUT NO GUARANTEE IS GIVEN THAT ALL EXISTING UTILITIES ARE SHOWN OR THAT THE GIVEN LOCATIONS ARE EXACT. CONFIRMATION OF EXISTENCE AND EXACT LOCATION OF ALL SERVICES MUST BE OBTAINED FROM THE INDIVIDUAL UTILITIES BEFORE PROCEEDING WITH CONSTRUCTION.

B.M. GBM67-001 ELEV. 234.148	DESIGNED BY WRJ	CHECKED BY RFB
	DRAWN BY DID, CGC	APPROVED BY RFB
	HOR. SCALE: 1:500	AUTHORIZED BY: R. FINGAS, P. ENG.
	VERTICAL: N/A	DATE 05/04/19
NO. REVISIONS	DATE	BY

UMA
An AECOM Company
2005 UMA ENGINEERING LTD. ALL RIGHTS RESERVED.

ENGINEER'S SEAL
PROVINCE OF MANITOBA
BRUCE W. BIGLOW
REGISTERED PROFESSIONAL ENGINEER

CONSULTANT DRAWING NO.
4231-040-01-04

THE CITY OF WINNIPEG
PUBLIC WORKS DEPARTMENT
ENGINEERING DIVISION

Winnipeg

STERLING LYON PARKWAY WEST OF
KENASTON BOULEVARD

HORIZONTAL GEOMETRY
STA. 0+950 TO STA. 2+050

SHEET 4 OF 61
CAD FILE DRAWING NUMBER 01-CT1002_RX
CITY DRAWING NUMBER P-3258-64

BID OPPORTUNITY
No. 84-2005
Certificate of Authorization
UMA Engineering Ltd.
No. 256 Expiry: April 30, 2005