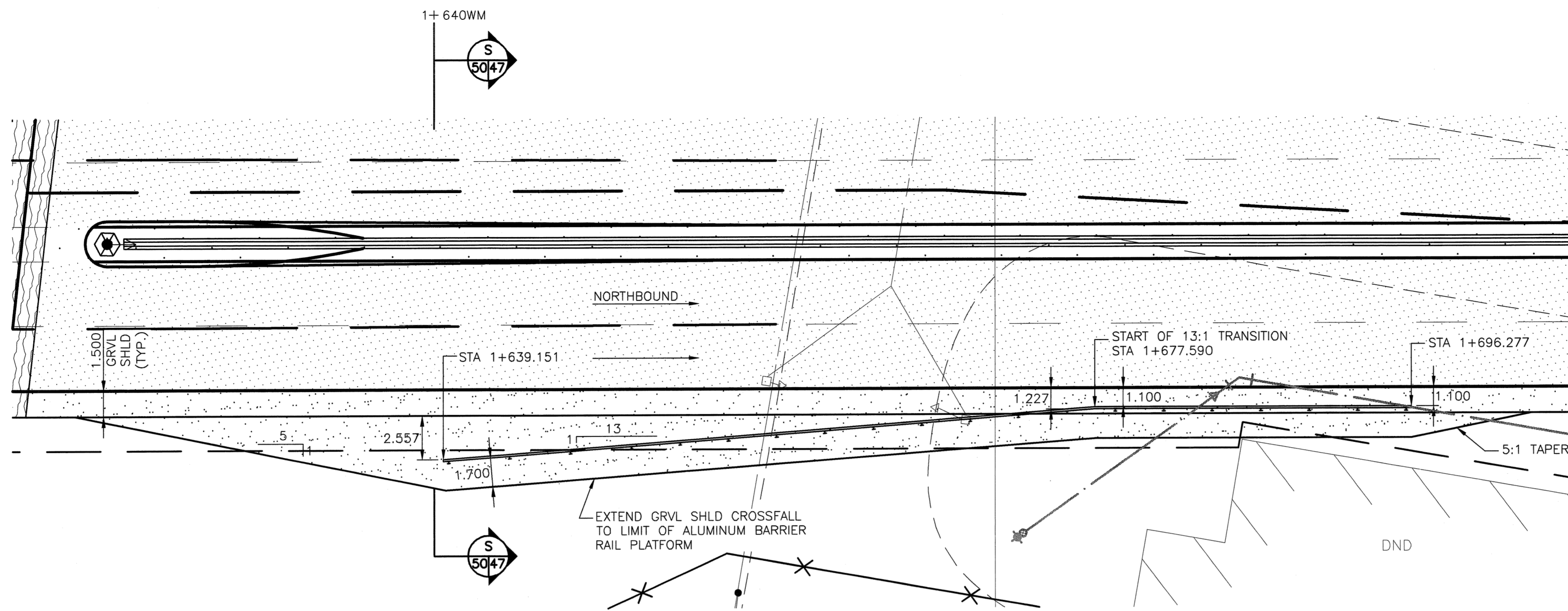


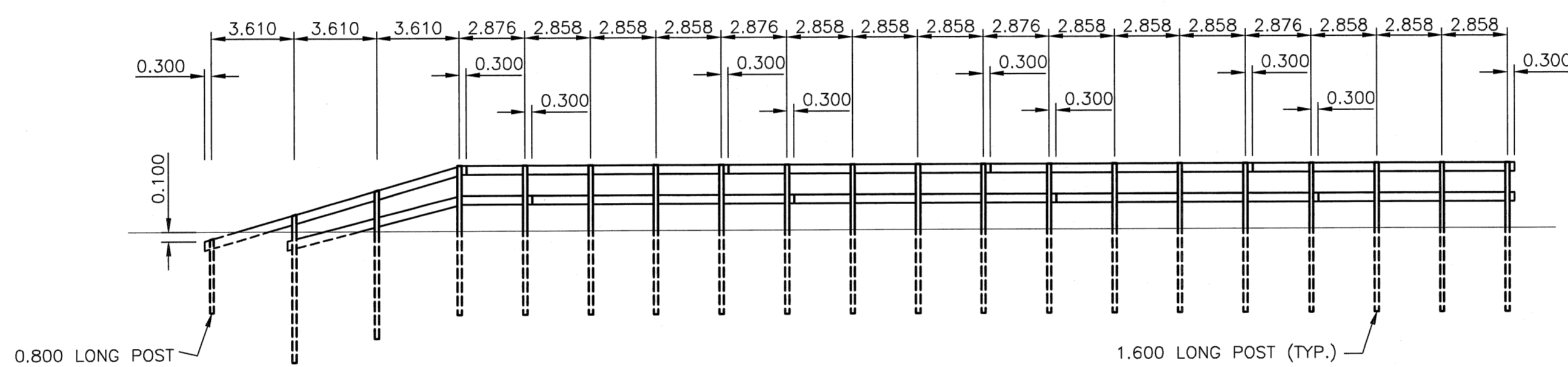
A1 SIZE 23.4" x 33.1" (594mm x 841mm)

PLOT: 05/04/19 9:00:50 PM

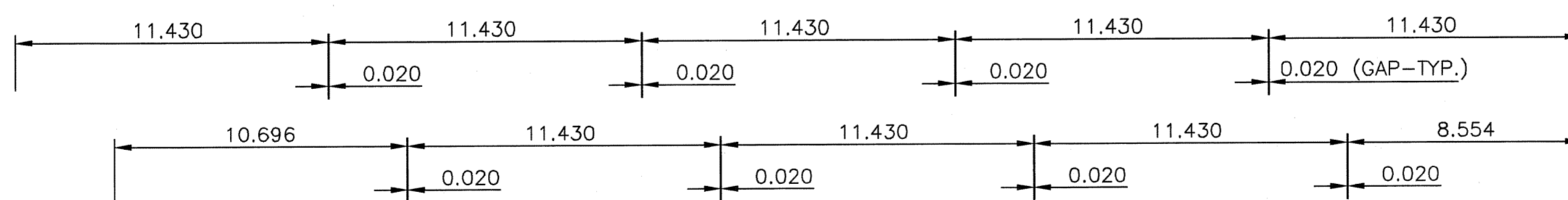
UMA FILE NAME: 4231-040-01-CT4003_RX.dwg Saved By: dtkospop



PLAN VIEW



POST SPACING-ELEVATION



RAIL SPACING-SCHEMATIC

ALUMINUM BARRIER RAIL	
BILL OF MATERIALS	
QUANTITY	ITEM
8	BARRIER RAIL 11430mm
1	BARRIER RAIL 10696mm
1	BARRIER RAIL 8554mm
19	BARRIER POST 1600mm
1	BARRIER POST 800mm
8	EXPANSION SPLICE BAR
78	RAIL CLAMP BAR
2	RAIL END CLAMP
188	13- 13x25 STAINLESS STEEL HEX HEAD CAP SCREWS
188	27 OD x 14 ID x 2 THICK STAINLESS STEEL WASHER



METRIC

WHOLE NUMBERS INDICATE MILLIMETRES
DECIMALIZED NUMBERS INDICATE METRES

WARNING

IF POWER EQUIPMENT OR EXPLOSIVES ARE TO BE USED FOR EXCAVATION ON THIS PROJECT THE CONTRACTOR MUST:
1) NOTIFY THE GAS COMPANY OF THE PROPOSED LOCATION OF EXCAVATION.
2) TAKE PRECAUTION TO AVOID DAMAGE TO GAS COMPANY INSTALLATIONS.
SEE PROVINCIAL REGULATION 140/92 FOR DETAILS

○	MANHOLE	●	CONCRETE PAVEMENT
□	CATCH BASIN/CATCH PIT	■	CONC. SIDEWALK/MEDIAN
△	C & G INLET WITH BOX	▲	ASPHALT PAVEMENT
⊙	TREE	▲	ASPHALT APPROACH
⊙ TH10	TEST HOLE	▲	ASPHALT SHOULDER
---	PROPERTY LINE	---	GRAVEL SHOULDER
⊕	SURVEY BAR	---	RAMP CURB
⊕	GEODETIC MONUMENT	---	REMOVAL
---	FENCE	+	SIGN
---	B.O.CURB/E.O.PAVEMENT	•	POLE
33.000	ELEVATION	⊗	RAIL SIGNALS/SIGNS
---	LEGEND - PLAN	---	LEGEND - PLAN

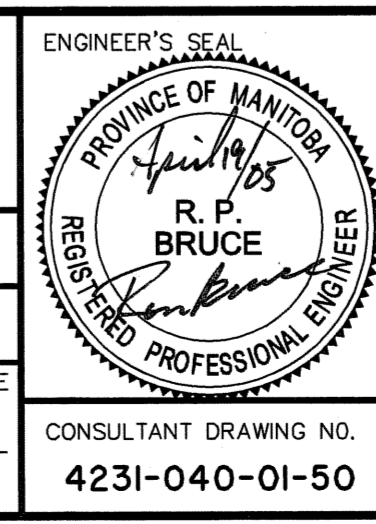
LOCATION APPROVED UNDERGROUND STRUCTURES

SUPV. U/G STRUCTURES COMMITTEE DATE

NOTE:
LOCATION OF UNDERGROUND STRUCTURES AS SHOWN ARE BASED ON THE BEST INFORMATION AVAILABLE BUT NO GUARANTEE IS GIVEN THAT ALL EXISTING UTILITIES ARE SHOWN OR THAT THE GIVEN LOCATIONS ARE EXACT. CONFIRMATION OF EXISTENCE AND EXACT LOCATION OF ALL SERVICES MUST BE OBTAINED FROM THE INDIVIDUAL UTILITIES BEFORE PROCEEDING WITH CONSTRUCTION.

B.M. 68M7-002	ELEV. 233.951
0	ISSUED FOR CONSTRUCTION 05/04/19 DL
A	ISSUED FOR CLIENT REVIEW 05/02/28 DL
NO.	REVISIONS DATE BY

UMA An AECOM Company	
2005 UMA ENGINEERING LTD. ALL RIGHTS RESERVED.	
DESIGNED BY: RPB	CHECKED BY: JGK
DRAWN BY: DID,DL	APPROVED BY: RPB
HOR. SCALE: 1:500	AUTHORIZED BY: R. FINGAS P.ENG. DATE: 05-04-19
VERTICAL: 1:20	BRIDGE PROJECTS ENGINEER
DATE: 05/04/19	



THE CITY OF WINNIPEG
PUBLIC WORKS DEPARTMENT
ENGINEERING DIVISION

Winnipeg

KENASTON UNDERPASS PROJECT
KENASTON BOULEVARD ROAD DETOUR

ALUMINUM BALANCED BARRIER RAIL POST AND RAIL TRANSITION LAYOUT

SHEET 50 OF 61
CAD FILE DRAWING NUMBER 01-CT4003_RX
CITY DRAWING NUMBER P-3258-110

BID OPPORTUNITY No. 84-2005
CONSULTANT DRAWING NO. 4231-040-01-50