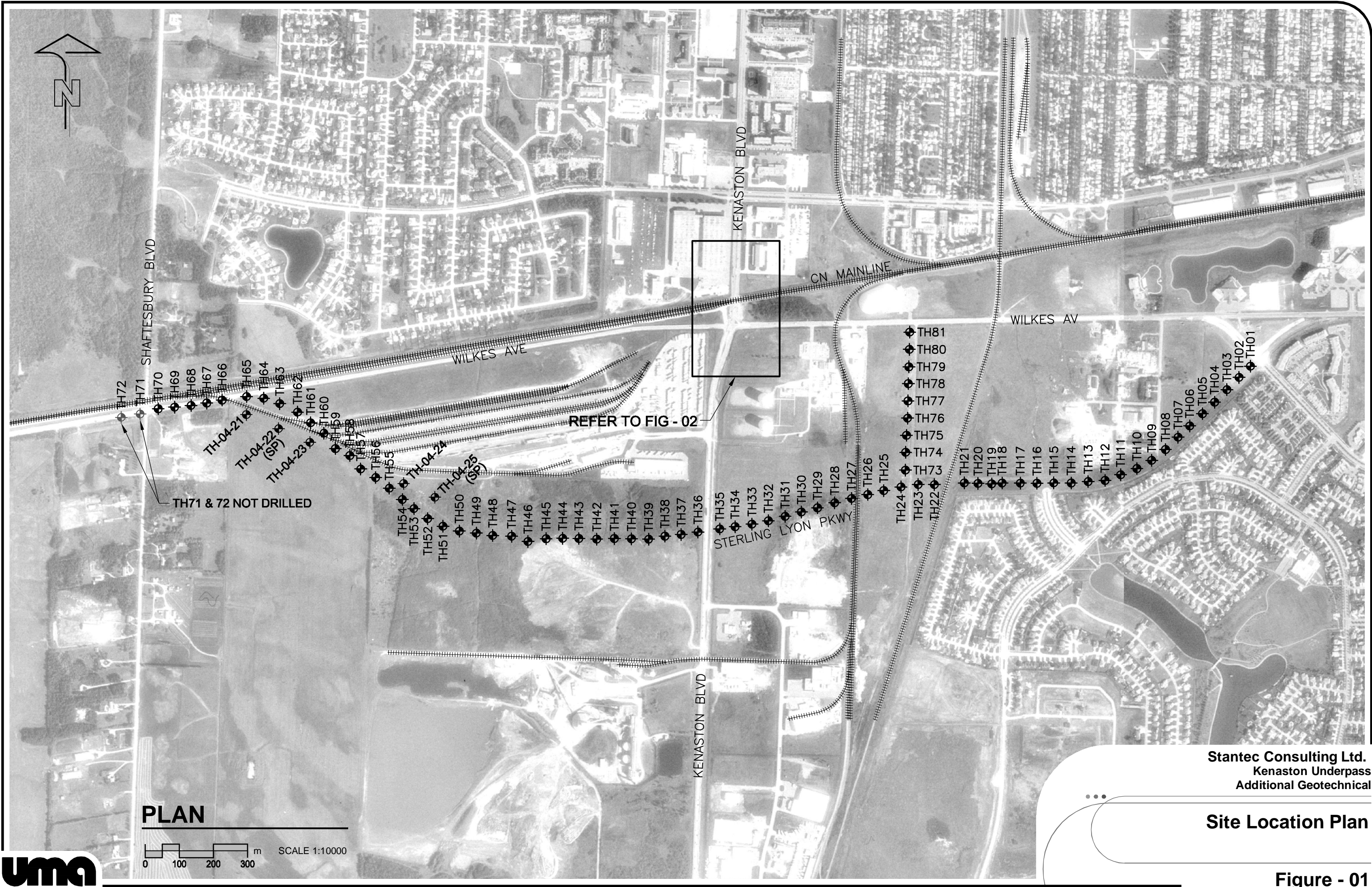
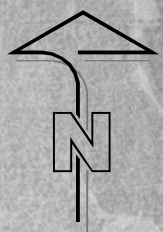
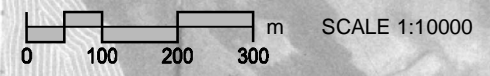


Geotechnical Report

Figures



PLAN

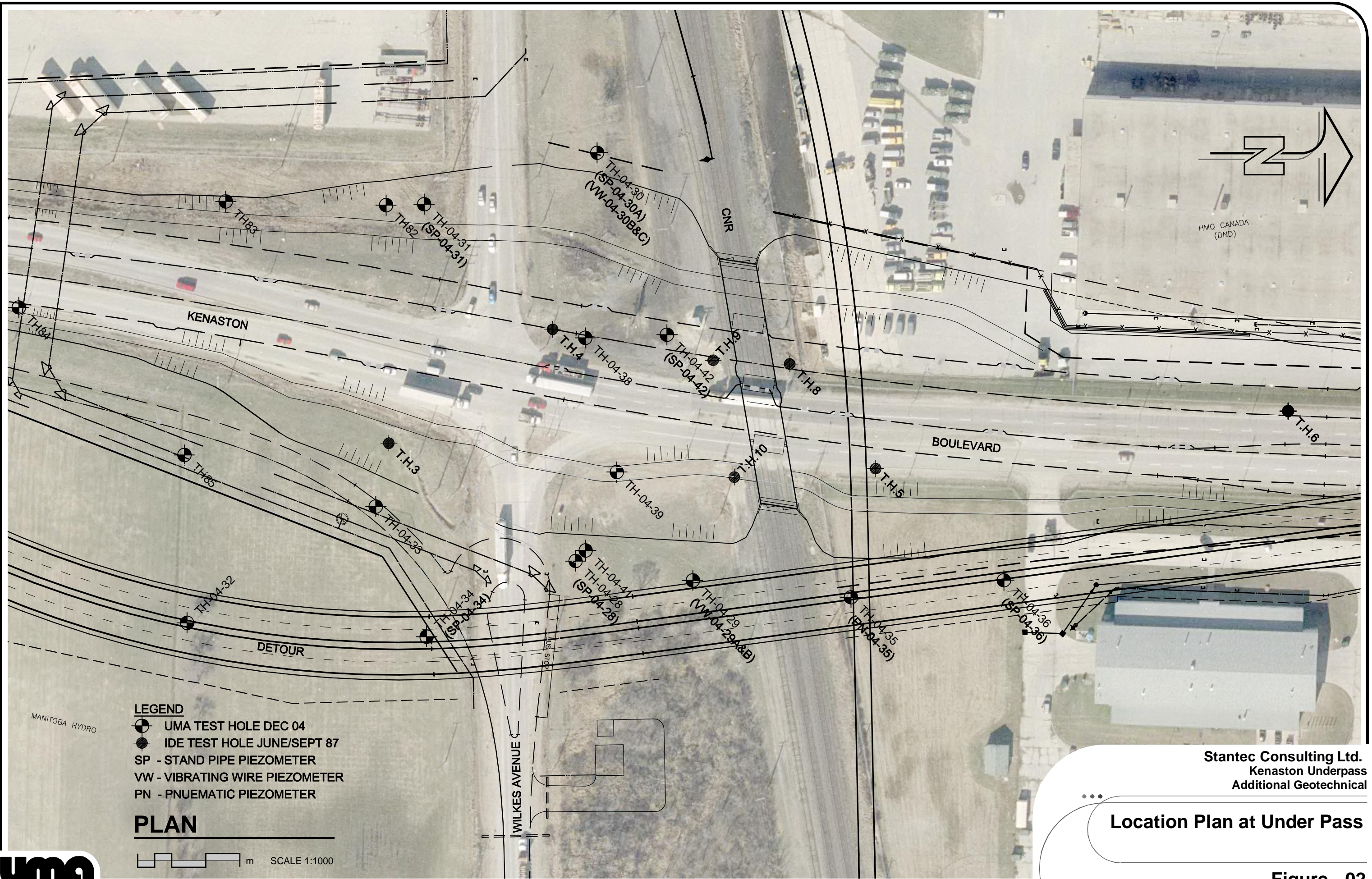


Stantec Consulting Ltd.
Kenaston Underpass
Additional Geotechnical

Site Location Plan

Figure - 01





- LEGEND**
- UMA TEST HOLE DEC 04
 - IDE TEST HOLE JUNE/SEPT 87
 - SP - STAND PIPE PIEZOMETER
 - VW - VIBRATING WIRE PIEZOMETER
 - PN - PNEUMATIC PIEZOMETER

PLAN

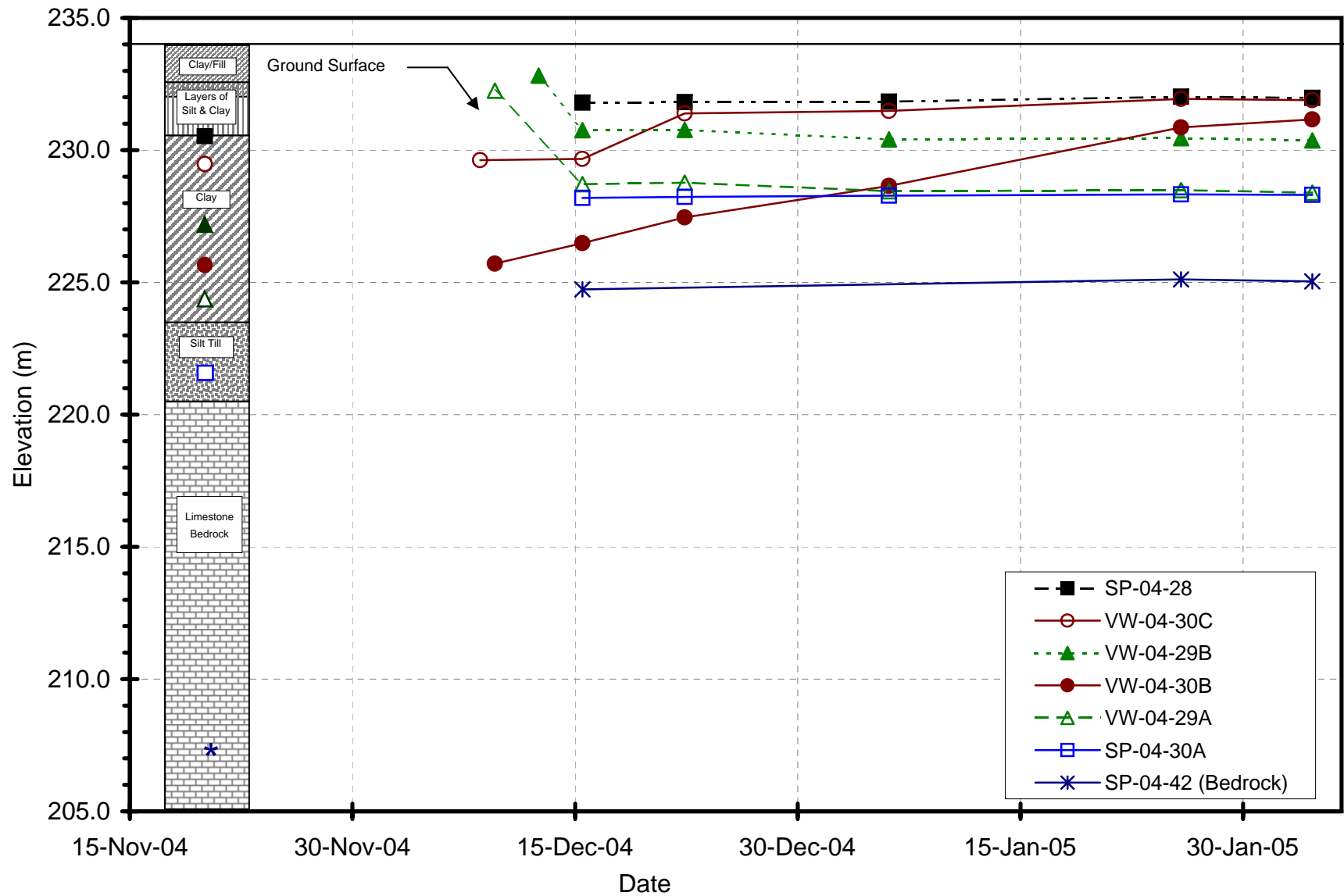
SCALE 1:1000

Stantec Consulting Ltd.
Kenaston Underpass
Additional Geotechnical

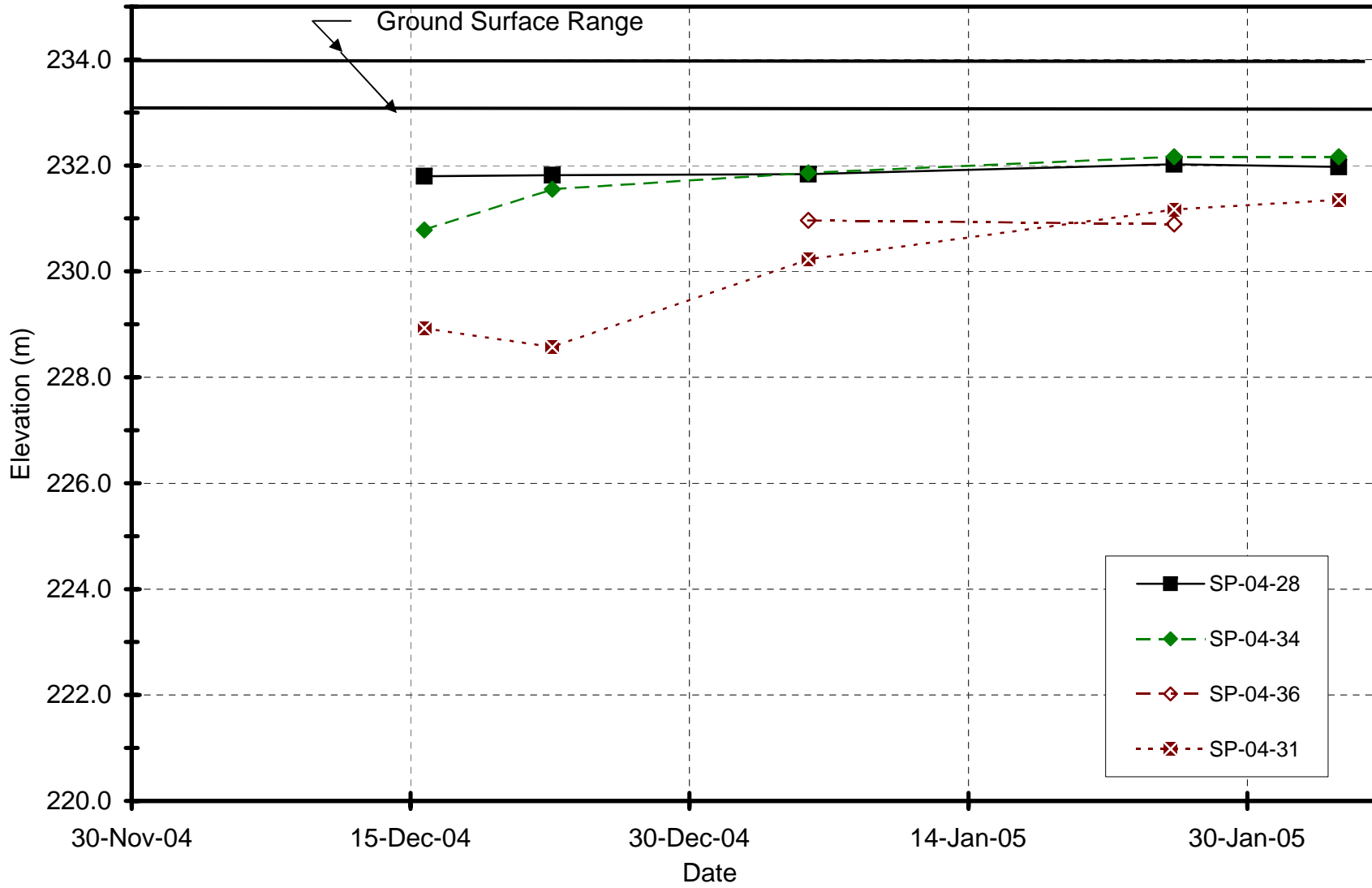
Location Plan at Under Pass

Figure - 02





**Figure 3 - Piezometric Head vs. Time
Piezometers Near Brigde**



**Figure 4 - Piezometric Head vs. Time
Shallow Piezometers**

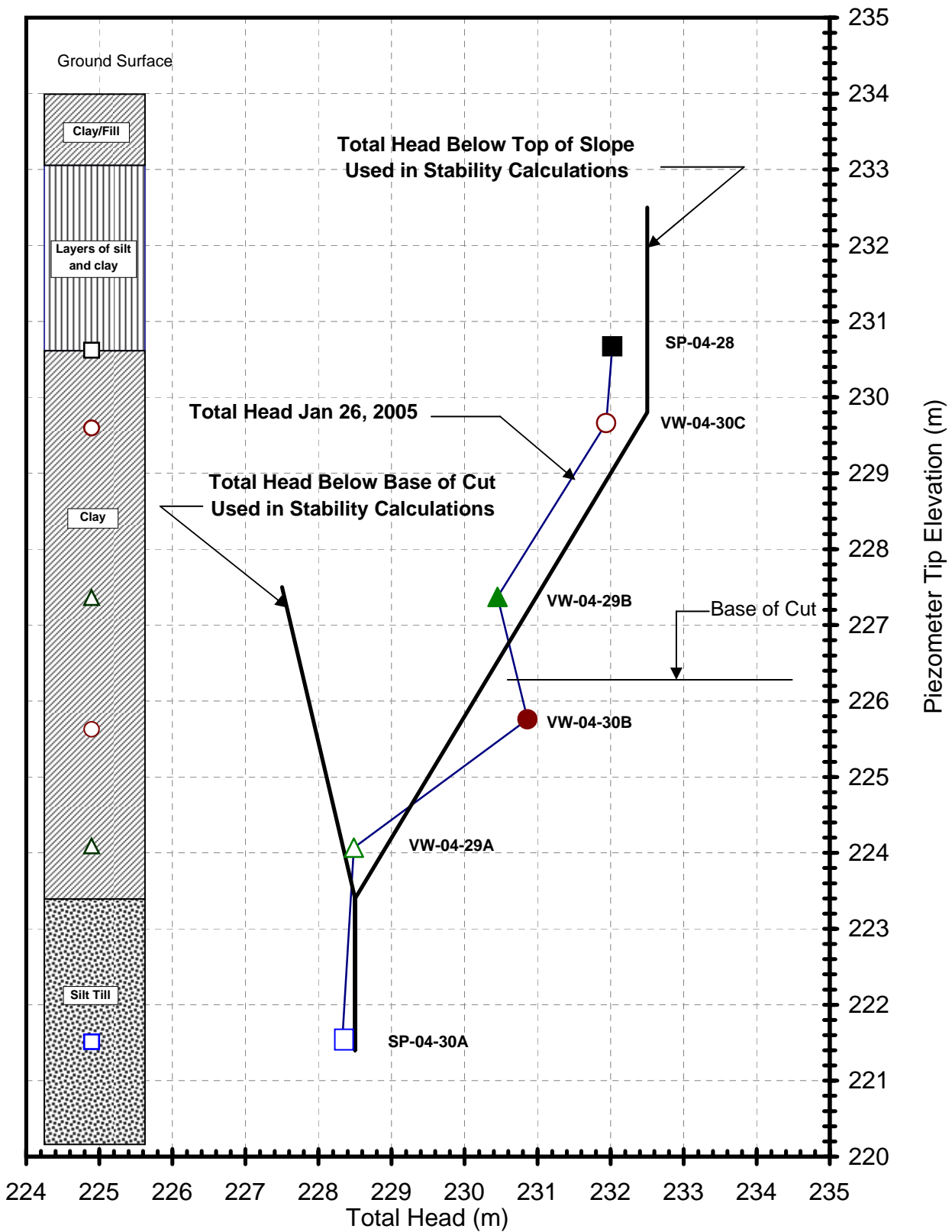


Figure 5 - Head Distribution for Stability Calculations

Title: Kenaston Underpass
Comments: Groundwater at Winter 2005 Levels
Name: 6.5 m cut, 5to1, 4 m bench 2.5 m fr bottom.gsz
Date: 2/28/2005

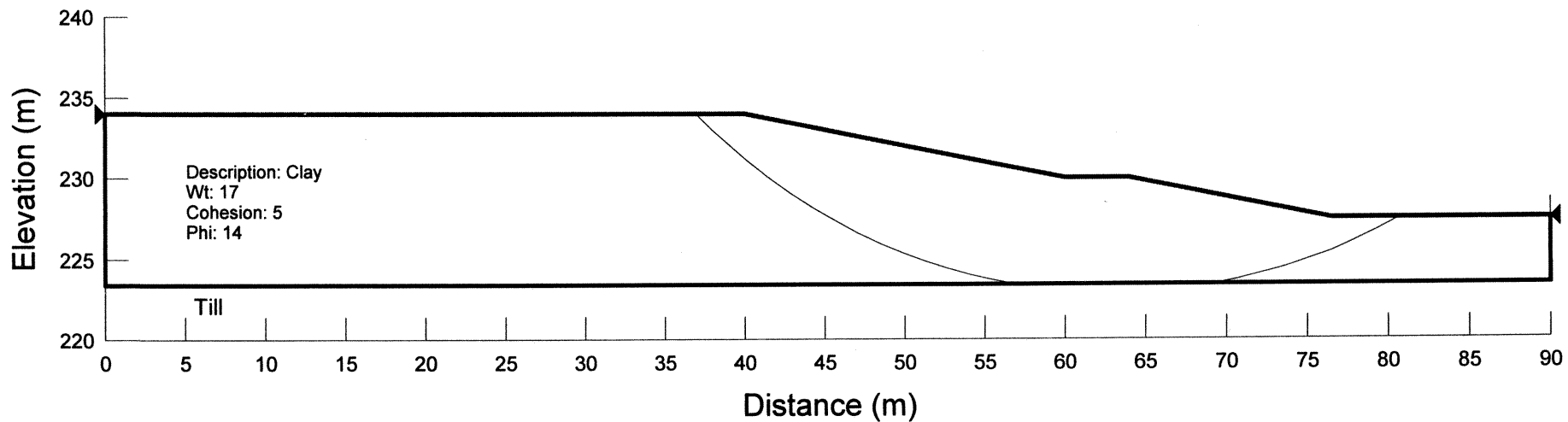
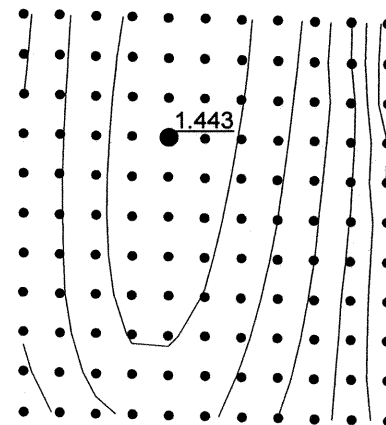


Figure 6 - Typical Slope Stability Output

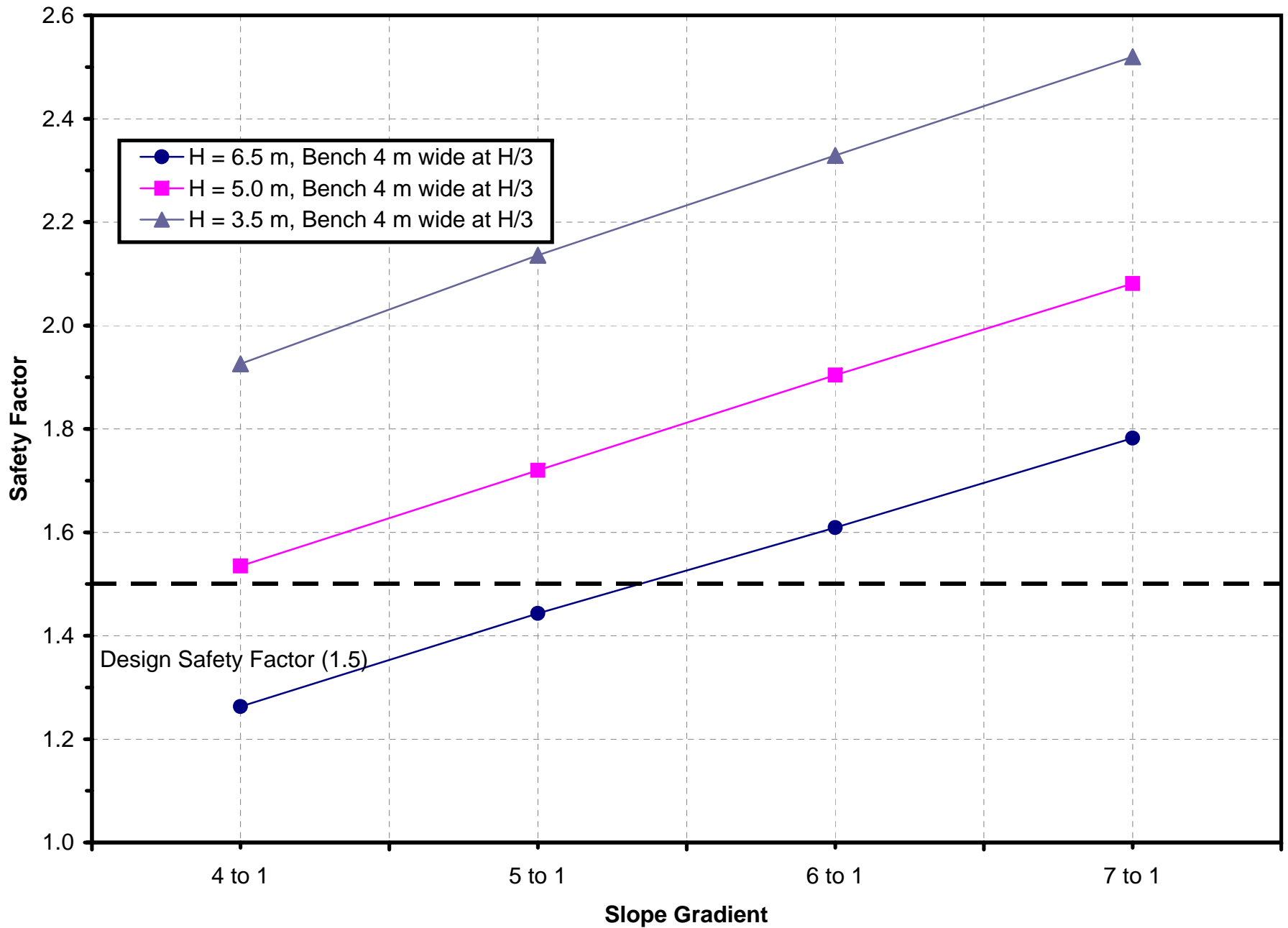
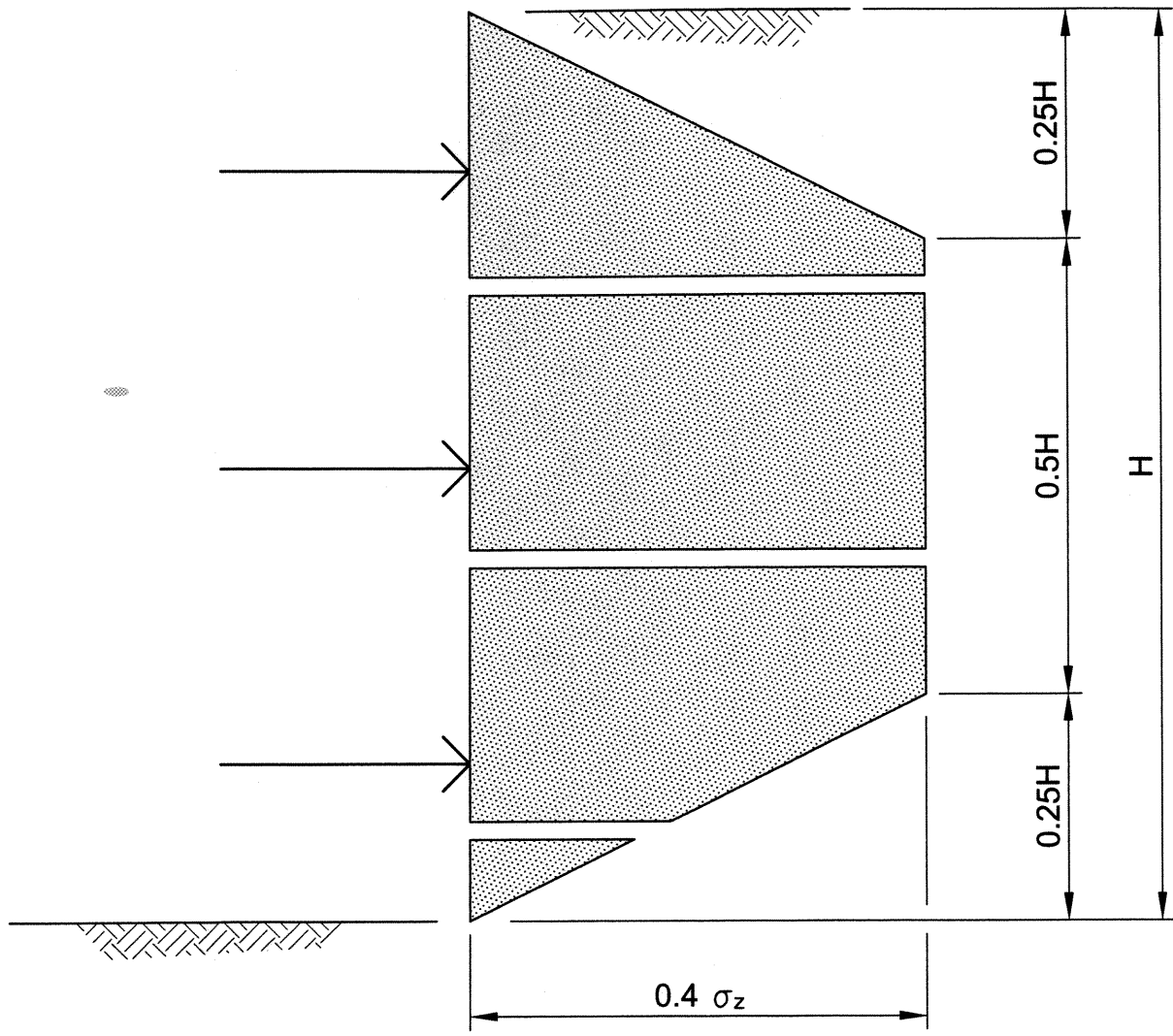


Figure 7 - Summary of Slope Stability Calculations



SOURCE: CANADIAN FOUNDATION ENGINEER MANUAL, 3rd EDITION.

Stantec Consulting Ltd.
Kenaston Underpass

...
**Apparent Earth Pressure Forces
on Supports for Strutted Walls**



Figure - 08