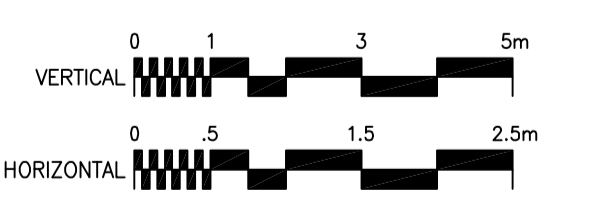


NOTES:

- FOR NEW PAVEMENT JOINT DETAILS REFER TO DWG. P-3258-22 TO P-3258-25.
- CONCRETE MULTI-USE SIDEWALK AT SPECIFIED LOCATIONS SHALL BE BUILT AS PER SD-228A, WITH 75mm THICK BASE COURSE.
- FOR LANDSCAPING DETAILS, REFER TO DRAWINGS P-3258-32 TO P-3258-38.



METRIC

WHOLE NUMBERS INDICATE MILLIMETRES
DECIMALIZED NUMBERS INDICATE METRES

WARNING

IF POWER EQUIPMENT OR EXPLOSIVES ARE TO BE USED FOR EXCAVATION ON THIS PROJECT THE CONTRACTOR MUST:
1) NOTIFY THE GAS COMPANY OF THE PROPOSED LOCATION OF EXCAVATION.
2) TAKE PRECAUTION TO AVOID DAMAGE TO GAS COMPANY INSTALLATIONS.
SEE PROVINCIAL REGULATION 140/92 FOR DETAILS

APEGM
Certificate of Authorization
Stantec Consulting Ltd.
No. 1301 Expiry: April 30, 2005

LOCATION APPROVED UNDERGROUND STRUCTURES		B.M. ELEV.	
SUPV. U/G STRUCTURES COMMITTEE	DATE		
NOTE: LOCATION OF UNDERGROUND STRUCTURES AS SHOWN ARE BASED ON THE BEST INFORMATION AVAILABLE BUT NO GUARANTEE IS GIVEN THAT ALL EXISTING UTILITIES ARE SHOWN OR THAT THE GIVEN LOCATIONS ARE EXACT. CONFIRMATION OF EXISTENCE AND EXACT LOCATION OF ALL SERVICES MUST BE OBTAINED FROM THE INDIVIDUAL UTILITIES BEFORE PROCEEDING WITH CONSTRUCTION.			
1	ISSUED FOR TENDER	05.03.29	GWM
0	ISSUED FOR CLIENT REVIEW	05.02.28	TAS
NO.	REVISIONS	DATE	BY

Stantec Consulting Ltd.
905 Waverley Street, Winnipeg, Manitoba
Tel 204-489-5900 Fax 204-453-9012

DESIGNED BY	TAS, WB	CHECKED BY	TAS
DRAWN BY	TAG, JMB	APPROVED BY	GWM
HOR. SCALE: AS SHOWN		AUTHORIZED BY: DATE	
VERTICAL: AS SHOWN		R. FINGAS, P. ENG. 05.03.24	
		R. FINGAS, P. ENG. BRIDGE PROJECTS ENGINEER	

ENGINEER'S SEAL
ORIGINAL SEALED BY
G.W. MOURANT
P. ENG.
05.03.24

THE CITY OF WINNIPEG
PUBLIC WORKS DEPARTMENT
Winnipeg ENGINEERING DIVISION

KENASTON UNDERPASS
STERLING LYON PARKWAY (EAST)

MISCELLANEOUS ROAD DETAILS

SHEET 30 OF 60
CAD FILE DRAWING NUMBER d11-sect.dwg
CITY DRAWING NUMBER P-3258-30

CONSULTANT DRAWING NO. I13703042-T18