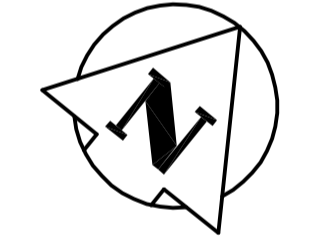
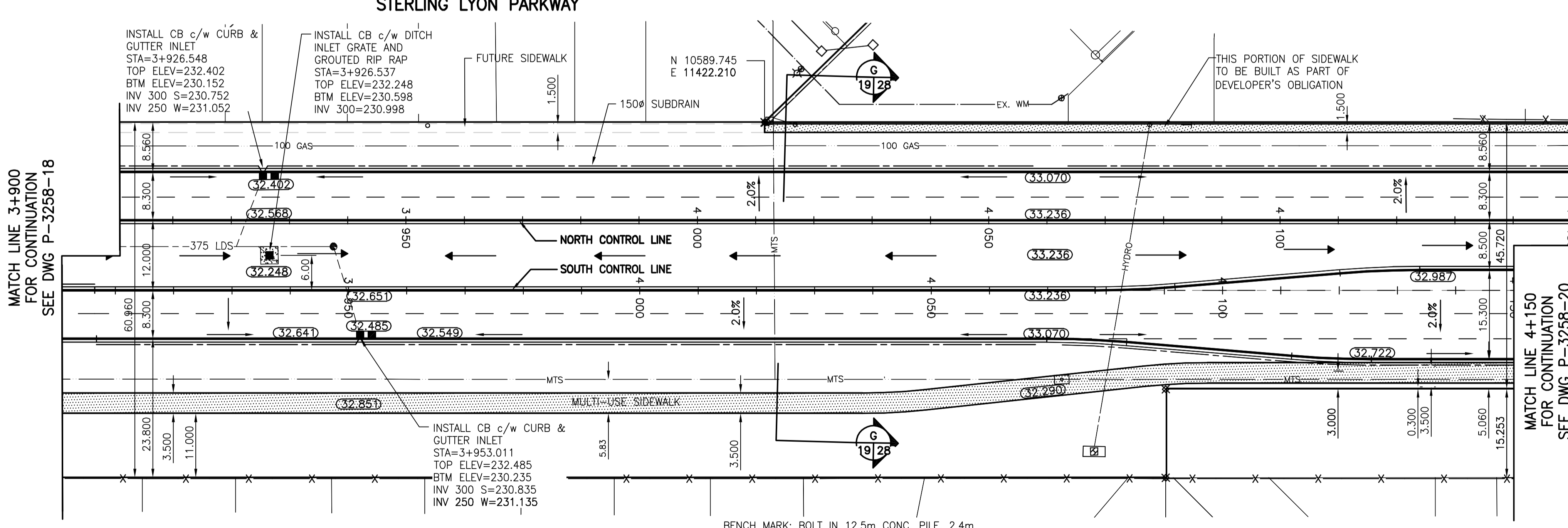


NOTE:
ALL STATIONS NORTH OF R.O.W. CENTRELINE, BASED ON NORTH CONTROL LINE.
ALL STATIONS SOUTH OF R.O.W. CENTRELINE, BASED ON SOUTH CONTROL LINE.

- NOTES:
- FOR LANDSCAPING DETAILS REFER TO DWGS P-3258-32 TO P-3258-38.
 - MULTI-USE SIDEWALK PROFILE WILL BE ADJUSTED AS PER FIELD CONDITIONS.

METRIC
WHOLE NUMBERS INDICATE MILLIMETRES
DECIMALIZED NUMBERS INDICATE METRES

WARNING
IF POWER EQUIPMENT OR EXPLOSIVES ARE TO BE USED FOR EXCAVATION ON THIS PROJECT THE CONTRACTOR MUST:
1) NOTIFY THE GAS COMPANY OF THE PROPOSED LOCATION OF EXCAVATION.
2) TAKE PRECAUTION TO AVOID DAMAGE TO GAS COMPANY INSTALLATIONS.
SEE PROVINCIAL REGULATION 140/92 FOR DETAILS



MATCH LINE 3+900 FOR CONTINUATION SEE DWG P-3258-18

MATCH LINE 4+150 FOR CONTINUATION SEE DWG P-3258-20

BENCH MARK: BOLT IN 12.5m CONC. PILE, 2.4m N. OF S.L. OF WILKES AVE. (FENCE LINE), & 7m E. OF E. FACE OF 2nd TOWER W. OF THE MOST ELY. SET OF TRACKS OF C.P.R. LA RIVIERE SUBD.

---	GAS	○	MANHOLE	●	CONCRETE PAVEMENT
---	MTS	□	CATCH BASIN/CATCH PIT	■	ASPHALT PAVEMENT
---	HYDRO	△	C & G INLET WITH BOX	▲	CONC. SIDEWALK/MED. SLAB
---	VIDEO	⊙	TREE	⊗	PAVING STONE
---	TRAFFIC SIGNALS	⊕	TEST HOLE	⊘	TOPSOIL & SOD
---	LAND DRAINAGE SEWER	⊖	PROPERTY LINE	⊙	GRAVEL
---	SANITARY/COMBINED SEWER	⊕	SURVEY BAR	⊖	RAMP CURB
---	CATCHBASIN LEAD	⊖	GEODETIC MONUMENT	⊕	REMOVAL
---	WATERMAIN	⊗	FENCE	⊖	NORTH OR WEST R.
---	SUBDRAIN	⊕	BACK OF CURB	⊖	SOUTH OR EAST R.
---	DITCH	⊖	ELEVATION	⊕	NORTH OR SOUTH C.L.
---	EXISTING	---	LEGEND - PLAN	---	NEW

LOCATION APPROVED UNDERGROUND STRUCTURES

SUPV. U/G STRUCTURES COMMITTEE DATE

NOTE:
LOCATION OF UNDERGROUND STRUCTURES AS SHOWN ARE BASED ON THE BEST INFORMATION AVAILABLE BUT NO GUARANTEE IS GIVEN THAT ALL EXISTING UTILITIES ARE SHOWN OR THAT THE GIVEN LOCATIONS ARE EXACT. CONFIRMATION OF EXISTENCE AND EXACT LOCATION OF ALL SERVICES MUST BE OBTAINED FROM THE INDIVIDUAL UTILITIES BEFORE PROCEEDING WITH CONSTRUCTION.

B.M.	66-001
ELEV.	233.425m
DESIGNED BY	TAS, TAG
CHECKED BY	CLD, VM
DRAWN BY	TAG
APPROVED BY	GWM
AUTHORIZED BY	R. FINGAS
DATE	05.03.24
DATE	05.02.28
DATE	05.03.29

Stantec Consulting Ltd.
905 Waverley Street, Winnipeg, Manitoba
Tel 204-489-5900 Fax 204-453-9012

DESIGNED BY: TAS, TAG
CHECKED BY: CLD, VM
DRAWN BY: TAG
APPROVED BY: GWM
AUTHORISED BY: R. FINGAS
DATE: 05.03.24

HOR. SCALE: 1:500
VERTICAL: 1:20

ENGINEER'S SEAL

ORIGINAL SEALED BY
G.W. MOURANT
P. ENG.
05.03.24

CONSULTANT DRAWING NO.
I13703042-T07

THE CITY OF WINNIPEG
PUBLIC WORKS DEPARTMENT
ENGINEERING DIVISION

Winnipeg

KENASTON UNDERPASS
STERLING LYON PARKWAY (EAST)

HORIZONTAL & VERTICAL ALIGNMENT
STA 3+900 TO STA 4+150

SHEET 19 OF 60
CAD FILE DRAWING NUMBER
sps-grade.dwg
CITY DRAWING NUMBER
P-3258-19

APEGM
Certificate of Authorization
Stantec Consulting Ltd.
No. 1301 Expiry: April 30, 2005