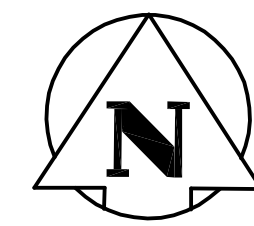
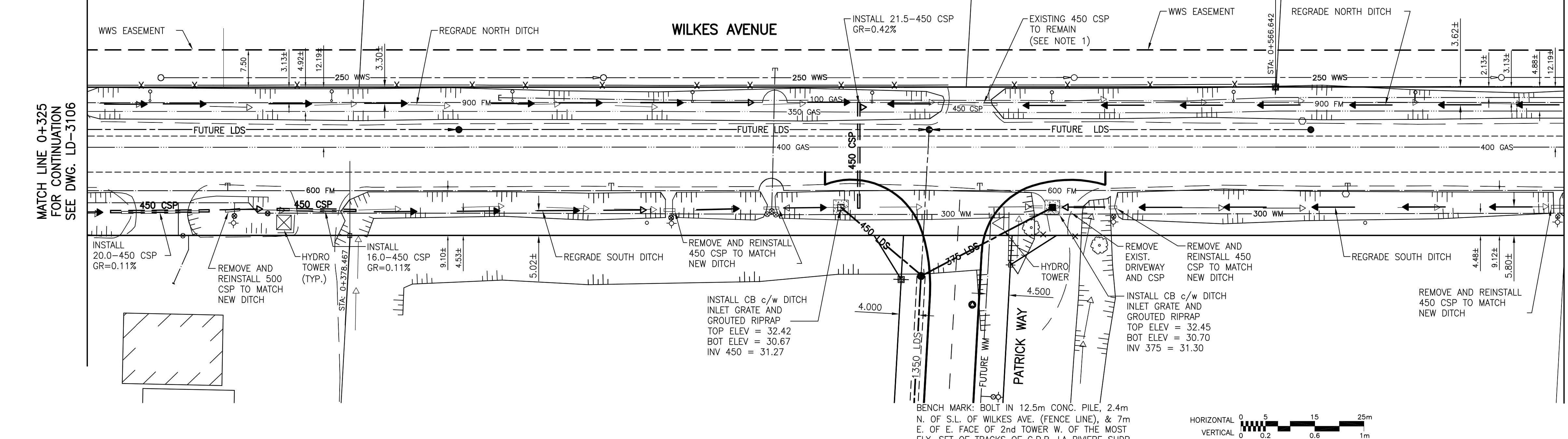


NOTE:
STATIONS FOR ALL UNDERGROUND BASED
ON CENTRELINE OF WILKES ROW



- NOTES:
- EXISTING CULVERTS TO REMAIN WILL BE INSPECTED BY CONTRACT ADMINISTRATOR PRIOR TO DITCH REGRADE. UPON INSPECTION, CONTRACT ADMINISTRATOR TO ADVISE CONTRACTOR OF CULVERT REPLACEMENT (IF REQUIRED).
 - CSP INSTALLATION UNDER EXISTING ROAD TO BE BACKFILLED TO CLASS 2 SPECIFICATIONS. PAVEMENT RESTORATION TO MATCH EXISTING ROAD CROSS SECTIONS.

METRIC
WHOLE NUMBERS INDICATE MILLIMETRES
DECIMALIZED NUMBERS INDICATE METRES

WARNING

IF POWER EQUIPMENT OR EXPLOSIVES ARE TO BE USED FOR EXCAVATION ON THIS PROJECT THE CONTRACTOR MUST:
1) NOTIFY THE GAS COMPANY OF THE PROPOSED LOCATION OF EXCAVATION.
2) TAKE PRECAUTION TO AVOID DAMAGE TO GAS COMPANY INSTALLATIONS.
SEE PROVINCIAL REGULATION 140/92 FOR DETAILS

APEGM
Certificate of Authorization
Stantec Consulting Ltd.
No. 1301 Expiry: April 30, 2005

—	GAS	○	MANHOLE	●	HYDRANT	⊕
—	MTS	□	CATCH BASIN/CATCH PIT	■	WATERMAIN VALVE	⊗
—	HYDRO	△	C & G INLET WITH BOX	▲	GAS LINE MARKER	+
—	VIDEO	⊙	TREE	⊕	LIGHT STANDARD	⊖
—	TRAFFIC SIGNALS	⊙	TEST HOLE	⊕	GUY WIRE	⊖
—	LAND DRAINAGE SEWER	⊙	PROPERTY LINE	⊕	TRAFFIC SIGNAL	⊖
—	SANITARY/COMBINED SEWER	⊙	SURVEY BAR	⊕	SIGN	⊖
—	CATCHBASIN LEAD	⊙	GEODETIC MONUMENT	⊕	SIGNAL PIT	⊖
—	WATERMAIN	⊙	FENCE	⊕	HYDRO MARKER	⊖
—	SUBDRAIN	⊙	BACK OF CURB	⊕	BOLLARD	⊖
—	DITCH	⊙	ELEVATION	⊕		⊖
—	EXISTING	—	LEGEND - PLAN	—	EXISTING	—
—	NEW	—	LEGEND - PLAN	—	NEW	—

LOCATION APPROVED UNDERGROUND STRUCTURES

SUPV. U/G STRUCTURES COMMITTEE DATE

NOTE:
LOCATION OF UNDERGROUND STRUCTURES AS SHOWN ARE BASED ON THE BEST INFORMATION AVAILABLE BUT NO GUARANTEE IS GIVEN THAT ALL EXISTING UTILITIES ARE SHOWN OR THAT THE GIVEN LOCATIONS ARE EXACT. CONFIRMATION OF EXISTENCE AND EXACT LOCATION OF ALL SERVICES MUST BE OBTAINED FROM THE INDIVIDUAL UTILITIES BEFORE PROCEEDING WITH CONSTRUCTION.

B.M.	66-001
ELEV.	233.425m
NO.	REVISIONS
1	ISSUED FOR TENDER 05.03.29 GWM
0	ISSUED FOR CLIENT REVIEW 05.02.28 AJR
	DATE BY

Stantec Consulting Ltd.
905 Waverley Street, Winnipeg, Manitoba
Tel 204-489-5900 Fax 204-453-9012

DESIGNED BY	JKH	CHECKED BY	AJR
DRAWN BY	TAG	APPROVED BY	GWM
HOR. SCALE:	1:500	AUTHORIZED BY:	R. FINGAS
VERTICAL:	1:50	DATE	05.03.24
			R. FINGAS, P. ENG. BRIDGE PROJECTS ENGINEER

ENGINEER'S SEAL

ORIGINAL SEALED BY
A.J. RAPOSO
P. ENG.
05.03.24

CONSULTANT DRAWING NO.
I13703042-U12

THE CITY OF WINNIPEG
PUBLIC WORKS DEPARTMENT
ENGINEERING DIVISION

Winnipeg

KENASTON UNDERPASS
KENASTON BLVD /CN RIVERS SUB MILE 5 18

DITCH REGRADE
STA 0+325 TO STA 0+625

SHEET 42 OF 60
CAD FILE DRAWING NUMBER wilkes-ug.dwg
CITY DRAWING NUMBER LD-3107