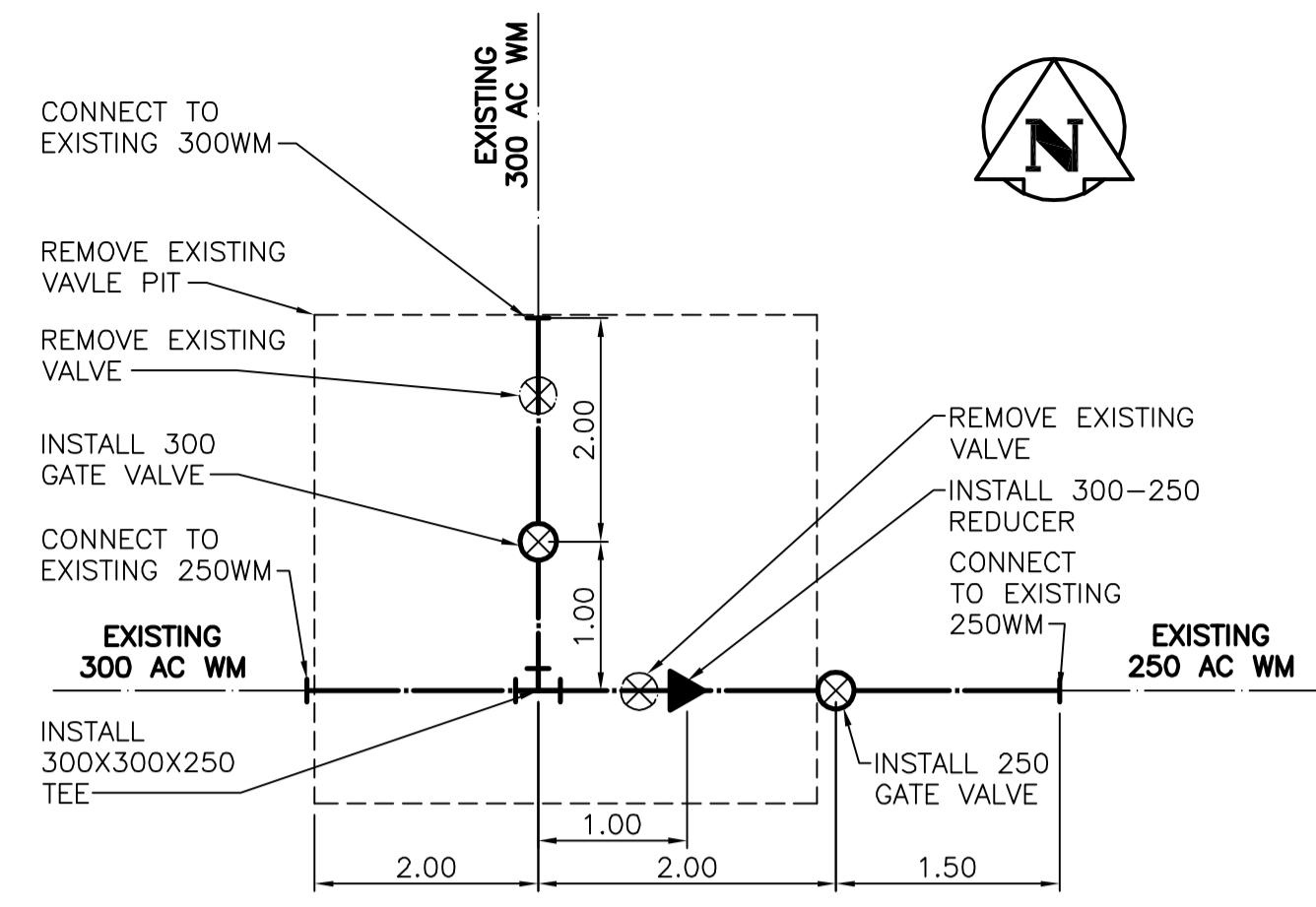
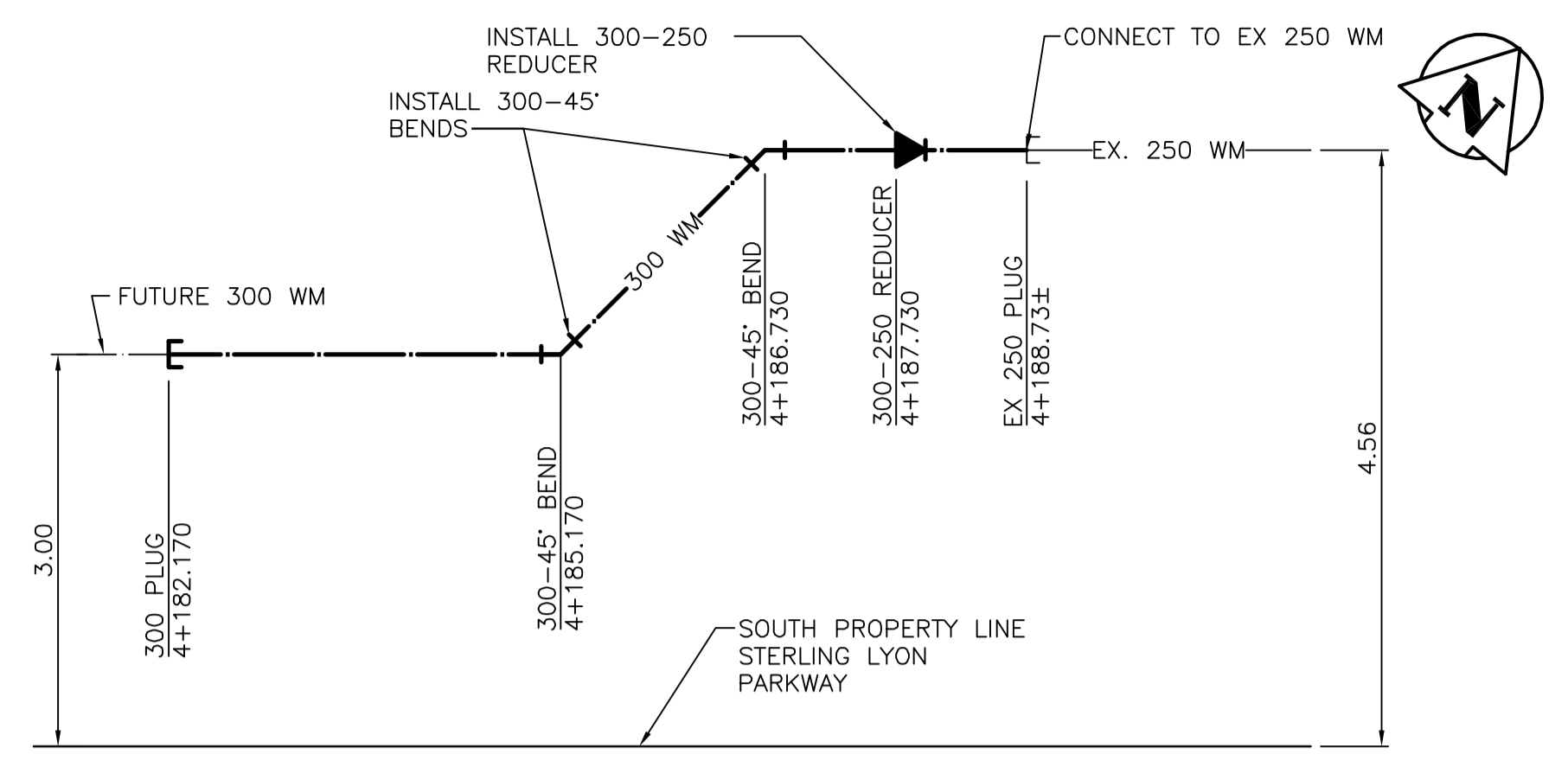


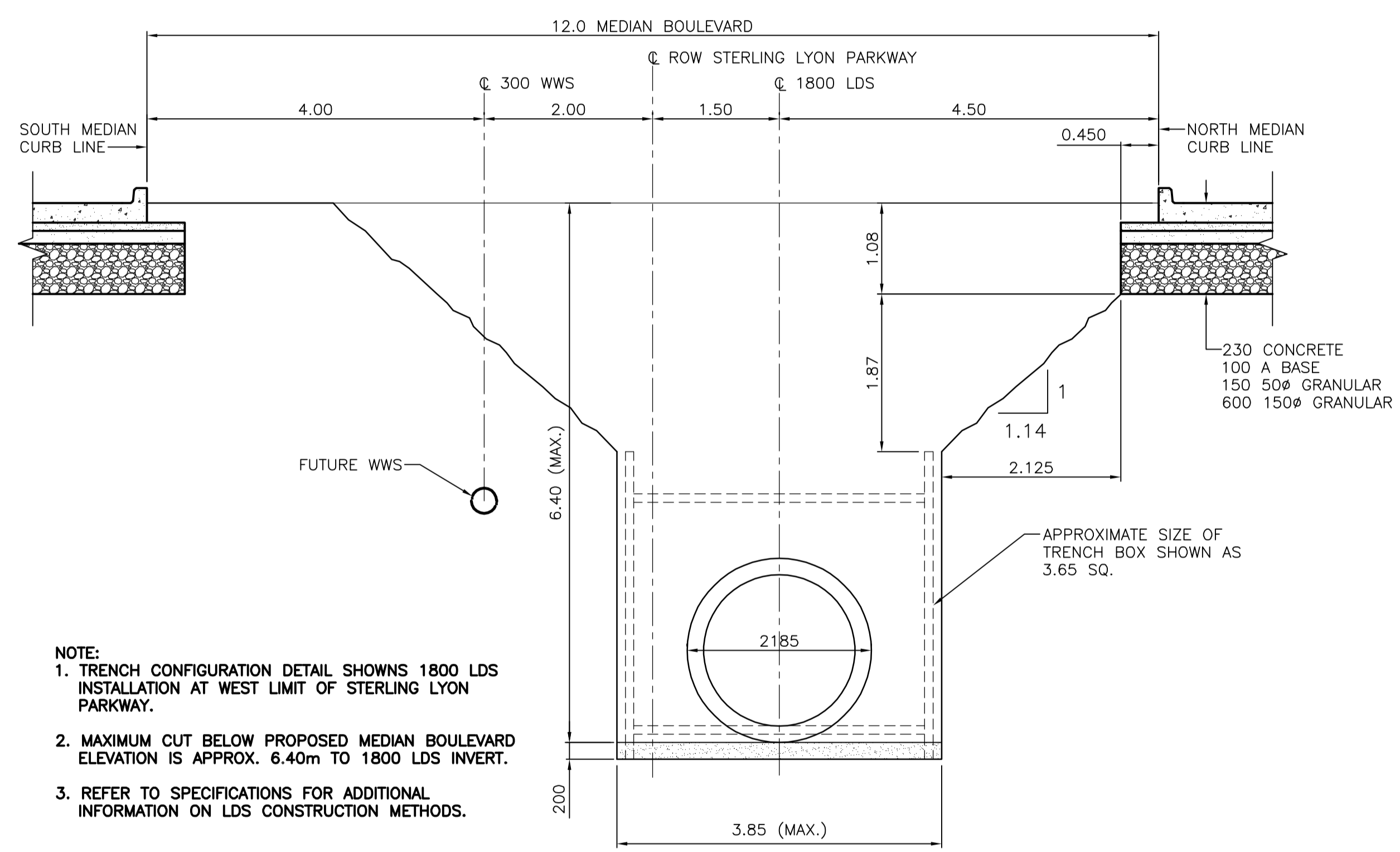
**4** WM RENEWAL - SW CORNER  
KENASTON BLVD. AND TAYLOR AVE.  
49 52 1:50



**5** WM RENEWAL - SE CORNER  
KENASTON BLVD. AND TAYLOR AVE.  
49 52 1:50

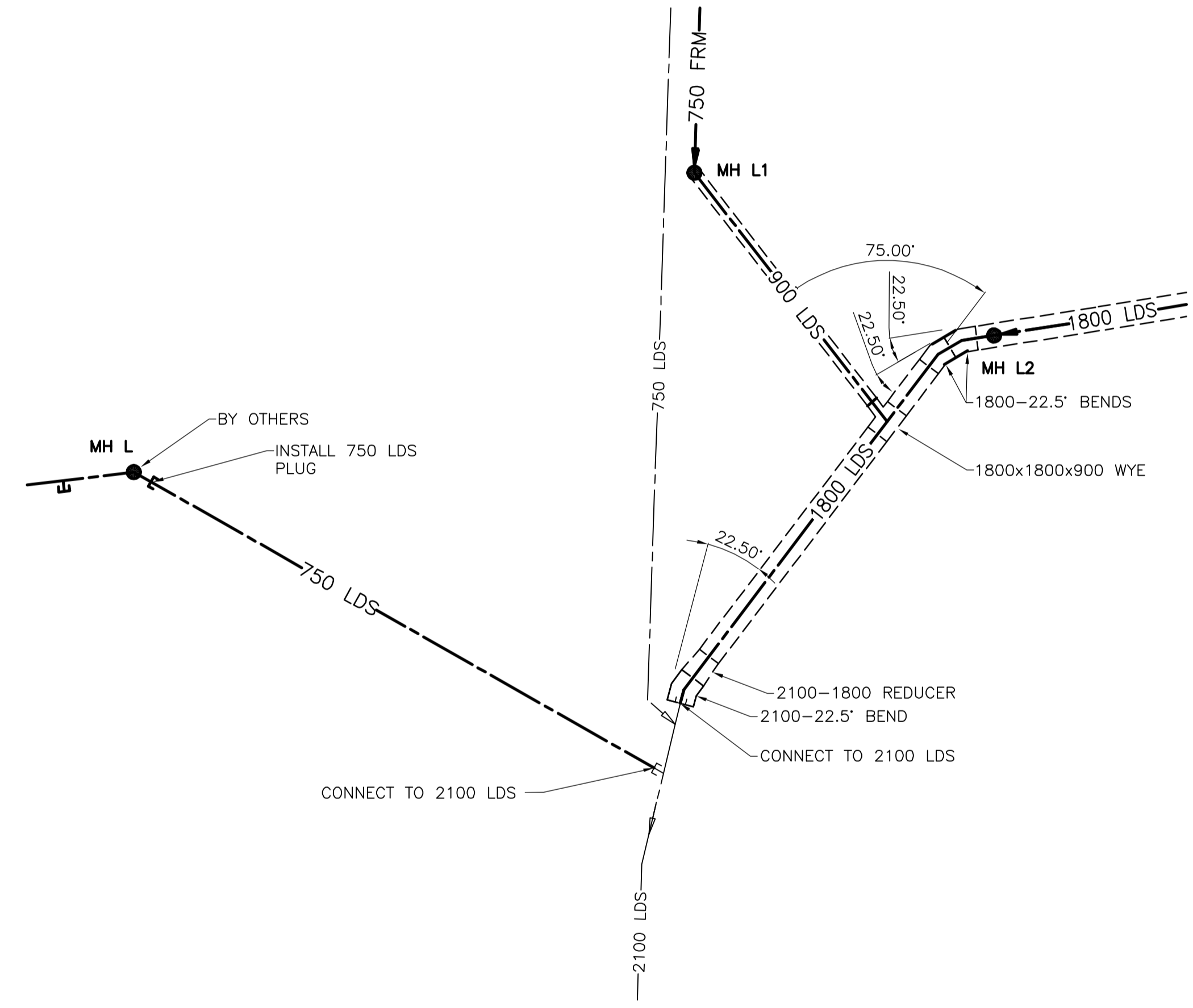


**6** 300 WM CONNECTION TO EXIST. 250 WM AT  
STERLING LYON PARKWAY AND VICTOR LEWIS DRIVE  
38 52 1:50



- NOTE:**
- TRENCH CONFIGURATION DETAIL SHOWS 1800 LDS INSTALLATION AT WEST LIMIT OF STERLING LYON PARKWAY.
  - MAXIMUM CUT BELOW PROPOSED MEDIAN BOULEVARD ELEVATION IS APPROX. 6.40m TO 1800 LDS INVERT.
  - REFER TO SPECIFICATIONS FOR ADDITIONAL INFORMATION ON LDS CONSTRUCTION METHODS.

**TRENCH CONFIGURATION DETAIL FOR STERLING LYON PARKWAY**  
1:50



**8** 2100 LDS AT KENASTON BOULEVARD AND STERLING LYON PARKWAY  
32 52 1:400

K:\117\csh\1170342 - Kenaston IP DESIGN\CD\DWG-SET\CONTRACT\UG-RENEWAL\DETAILS-UG.dwg 2005-03-24 11:28AM By: jgd

**METRIC**

WHOLE NUMBERS INDICATE MILLIMETRES  
DECIMALIZED NUMBERS INDICATE METRES

**WARNING**

IF POWER EQUIPMENT OR EXPLOSIVES ARE TO BE USED FOR EXCAVATION ON THIS PROJECT THE CONTRACTOR MUST:  
1) NOTIFY THE GAS COMPANY OF THE PROPOSED LOCATION OF EXCAVATION.  
2) TAKE PRECAUTION TO AVOID DAMAGE TO GAS COMPANY INSTALLATIONS.  
SEE PROVINCIAL REGULATION 140/92 FOR DETAILS

| LOCATION APPROVED UNDERGROUND STRUCTURES   |                          |          |     |
|--|--------------------------|----------|-----|
| SUPV. U/G STRUCTURES COMMITTEE   | DATE                     |          |     |
| NOTE:<br>LOCATION OF UNDERGROUND STRUCTURES AS SHOWN ARE BASED ON THE BEST INFORMATION AVAILABLE BUT NO GUARANTEE IS GIVEN THAT ALL EXISTING UTILITIES ARE SHOWN OR THAT THE GIVEN LOCATIONS ARE EXACT. CONFIRMATION OF EXISTENCE AND EXACT LOCATION OF ALL SERVICES MUST BE OBTAINED FROM THE INDIVIDUAL UTILITIES BEFORE PROCEEDING WITH CONSTRUCTION. |                          |          |     |
| NO.  | REVISIONS                | DATE     | BY  |
| 1  | ISSUED FOR TENDER        | 05.03.29 | GWM |
| 0  | ISSUED FOR CLIENT REVIEW | 05.02.28 | AJR |

|                |                    |
|----------------|--------------------|
| B.M. ELEV.     |                    |
| DESIGNED BY    | JKH, AJR           |
| CHECKED BY     | AJR                |
| DRAWN BY       | TAG                |
| APPROVED BY    | GWM                |
| HOR. SCALE:    | AS SHOWN           |
| VERTICAL:      | AS SHOWN           |
| AUTHORIZED BY: | R. FINGAS, P. ENG. |
| DATE           | 05.03.24           |
| DATE           | 04.09.24           |

**Stantec Consulting Ltd.**  
905 Waverley Street, Winnipeg, Manitoba  
Tel 204-489-5900 Fax 204-453-9012

DESIGNED BY: JKH, AJR  
CHECKED BY: AJR  
DRAWN BY: TAG  
APPROVED BY: GWM  
AUTHORISED BY: R. FINGAS, P. ENG.  
DATE: 05.03.24

ENGINEER'S SEAL

|  |
|--|
| ORIGINAL SEALED BY<br>A.J. RAPOSO<br>P. ENG.<br>05.03.24 |
| CONSULTANT DRAWING NO.<br>113703042-U22                  |

**THE CITY OF WINNIPEG**  
PUBLIC WORKS DEPARTMENT  
Winnipeg **ENGINEERING DIVISION**

**KENASTON UNDERPASS**  
STERLING LYON PARKWAY (EAST)

MISCELLANEOUS UNDERGROUND DETAILS

SHEET **52** OF **60**  
CAD FILE DRAWING NUMBER  
details-ug.dwg  
CITY DRAWING NUMBER  
**D-8632**

**APEGM**  
Certificate of Authorization  
Stantec Consulting Ltd.  
No. 1301 Expiry: April 30, 2005