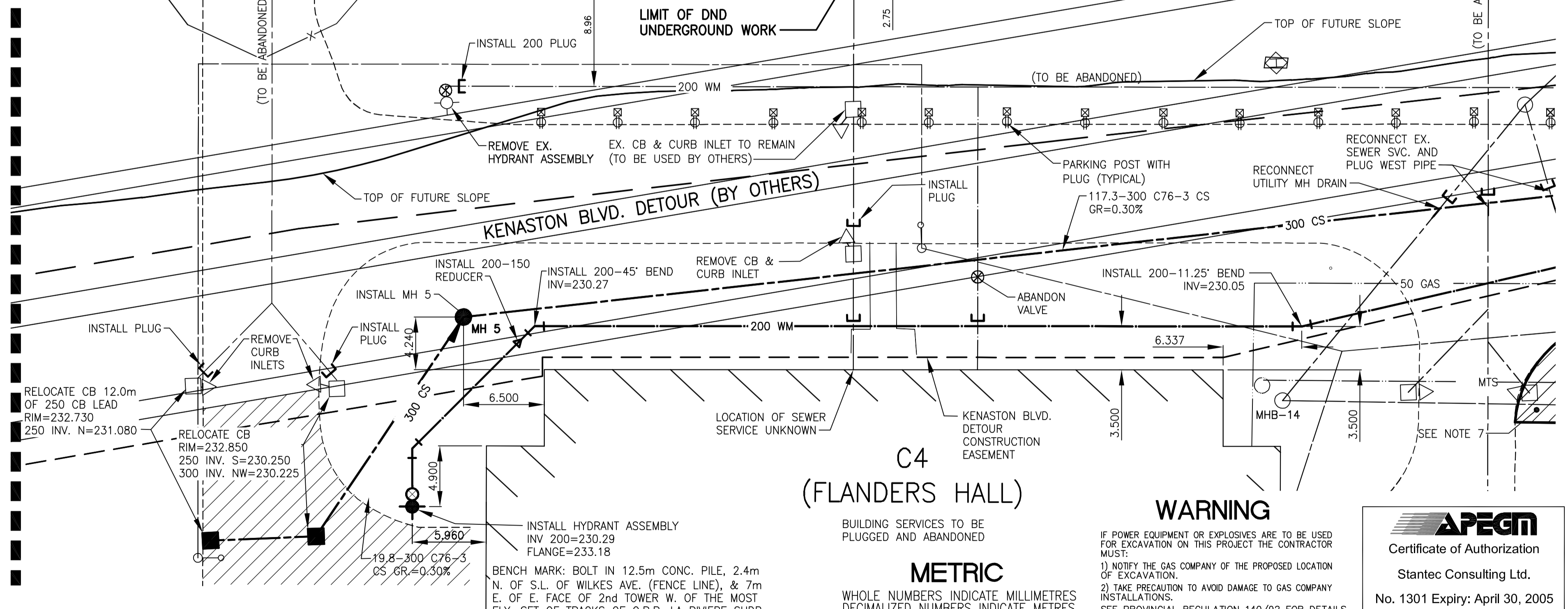


- NOTES**
- CONTRACTOR TO OBTAIN UNDERGROUND CLEARANCES FOR ALL EXISTING BURIED UTILITIES WITH THE INDIVIDUAL UTILITY COMPANIES PRIOR TO CONSTRUCTION.
 - ALL TRENCH, MANHOLE AND CATCH BASIN BACKFILL FOR WATER, SEWER AND PVC CONDUIT INSTALLATIONS SHALL BE CLASS 2 BACKFILL IN PAVEMENT AREAS AND CLASS 4 BACKFILL IN LANDSCAPED AREAS.
 - CONTRACTOR TO CONFIRM THE LOCATION, DEPTH AND SIZES OF ALL SERVICE CONNECTIONS PRIOR TO CONSTRUCTION. ANY CHANGES NECESSARY TO THE DESIGN GRADES WILL BE MADE BY THE CONTRACT ADMINISTRATOR PRIOR TO CONSTRUCTION OF THE NEW 300 CS.
 - CONTRACTOR TO CONFIRM ALL DIMENSIONS AND REPORT ANY DISCREPANCIES TO CONTRACT ADMINISTRATOR PRIOR TO CONSTRUCTION.
 - REFER TO DWG P-3258-31 FOR DND ELECTRICAL RELOCATIONS.
 - ALL EXISTING SEWER AND SERVICES FROM BUILDING P1 AND C8 ARE TO BE RECONNECTED TO NEW COMBINED SEWER AND WATERMAIN.
 - REMOVE EX. CURB, EXCAVATE BOULEVARD, ADJUST VALVE BOX AND CATCH BASIN FRAME AND COVER, REMOVE CURB INLET, INSTALL TEMPORARY ROAD ACCESS (100mm ASPHALT, 75mm OF BASE COURSE AND 150mm OF 50mm DIAMETER GRANULAR SUB-BASE).
 - EXISTING DUST COLLECTOR, BRACING, SUPPORTS, AND DUCTING ABOVE GRADE TO BE DISMANTLED/REMOVED FROM CURRENT LOCATION AND SALVAGED. CONTRACTOR TO PROVIDE CONSTRUCTION PROCEDURE SUBMISSION TO THE CONTRACT ADMINISTRATOR OUTLINING METHODS/EQUIPMENT TO BE USED IN SALVAGE OPERATIONS. CONTRACTOR SHALL BE RESPONSIBLE FOR DAMAGES CAUSED TO EXISTING MATERIALS IF APPROVED CONSTRUCTION PROCEDURES HAVE NOT BEEN FOLLOWED. CONTRACTOR TO PLACE SALVAGED MATERIALS IN APPROVED HOLDING AREA WITHIN DND LANDS AS DIRECTED BY CONTRACT ADMINISTRATOR.

NEW MANHOLES

MANHOLE	RIM ELEV.	BOTTOM	INVERT	BASE
MH 1	232.83±	230.200	230.210 N	1200# x1.220DP
MH 2	232.99±	229.840	229.846 E&S	1200# x1.220DP
MH 3	232.76±	229.710	229.720 N,E&W	1800# x1.220DP
MH 4	232.80±	229.800	229.813 W&S	1200# x1.220DP
MH 5	233.10±	230.160	230.165 N & SE	1200# x1.220DP



WARNING

IF POWER EQUIPMENT OR EXPLOSIVES ARE TO BE USED FOR EXCAVATION ON THIS PROJECT THE CONTRACTOR MUST:

- NOTIFY THE GAS COMPANY OF THE PROPOSED LOCATION OF EXCAVATION.
- TAKE PRECAUTION TO AVOID DAMAGE TO GAS COMPANY INSTALLATIONS.

SEE PROVINCIAL REGULATION 140/92 FOR DETAILS

METRIC

WHOLE NUMBERS INDICATE MILLIMETRES
DECIMALIZED NUMBERS INDICATE METRES

APEGM
Certificate of Authorization
Stantec Consulting Ltd.
No. 1301 Expiry: April 30, 2005

EXISTING	LEGEND - PLAN	NEW	EXISTING	LEGEND - PLAN	NEW	EXISTING	LEGEND - PLAN	NEW
○	GAS	○	●	MANHOLE	○	○	TREE	
□	MTS	□	■	CATCH BASIN/CATCH PIT	○	○	SIGN	
△	HYDRO	△	▲	C & G INLET WITH BOX	⊗	⊗	RAIL CROSSING SIGNAL	
◇	VIDEON	◇	◆	VALVE	—	—	CURB	
⊕	TRAFFIC SIGNALS	⊕	+	HYDRANT	—	—		
—	LAND DRAINAGE SEWER	—	○	ELECTRICAL OUTLET				
—	SANITARY/COMBINED SEWER	—	○	HYDRO POLE				
—	CATCHBASIN LEAD	—	⊕	HYDRO PEDESTAL				
—	WATERMAIN	—	⊕	SIGNAL PIT				
—	PLUG	—	○	LIGHT STANDARD				
—		—	○	TRAFFIC SIGNAL				

LOCATION APPROVED UNDERGROUND STRUCTURES

SUPV. U/G STRUCTURES COMMITTEE DATE

NOTE:
LOCATION OF UNDERGROUND STRUCTURES AS SHOWN ARE BASED ON THE BEST INFORMATION AVAILABLE BUT NO GUARANTEE IS GIVEN THAT ALL EXISTING UTILITIES ARE SHOWN OR THAT THE GIVEN LOCATIONS ARE EXACT. CONFIRMATION OF EXISTENCE AND EXACT LOCATION OF ALL SERVICES MUST BE OBTAINED FROM THE INDIVIDUAL UTILITIES BEFORE PROCEEDING WITH CONSTRUCTION.

B.M.	66-001		
ELEV.	233.425m		
1	ISSUED FOR TENDER	05.03.29	GWM
0	ISSUED FOR CLIENT REVIEW	05.02.28	AJR
NO.	REVISIONS	DATE	BY

Stantec Consulting Ltd.

905 Waverley Street, Winnipeg, Manitoba
Tel 204-489-5900 Fax 204-453-9012

DESIGNED BY	JKH, AJR	CHECKED BY	AJR
DRAWN BY	TAG	APPROVED BY	GWM
AUTHORIZED BY:	R. FINGAS	DATE:	05.03.24
R. FINGAS, P. ENG. BRIDGE PROJECTS ENGINEER			

ENGINEER'S SEAL

ORIGINAL SEALED BY
A.J. RAPOSO
P. ENG.
05.03.24

CONSULTANT DRAWING NO.
I13703042-U18

THE CITY OF WINNIPEG
PUBLIC WORKS DEPARTMENT
ENGINEERING DIVISION

Winnipeg

KENASTON UNDERPASS
STERLING LYON PARKWAY (EAST)

SHEET **48** OF **60**

CAD FILE DRAWING NUMBER
dnd ug dwg

CITY DRAWING NUMBER
D-8628

UNDERGROUND UTILITY RELOCATION PLAN