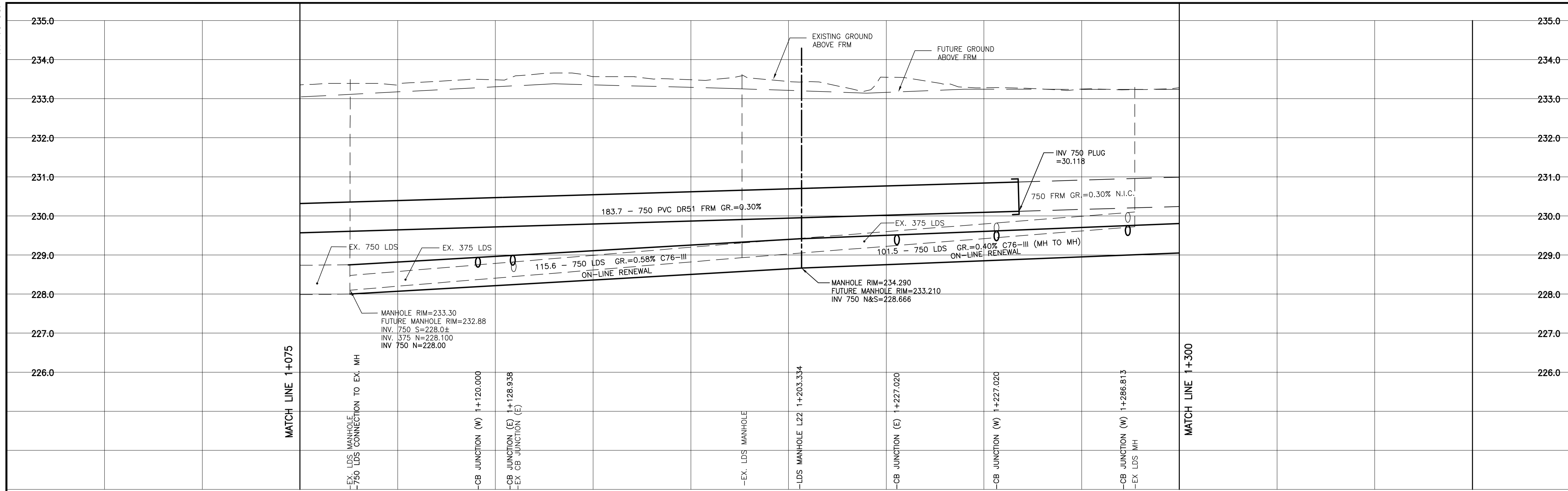
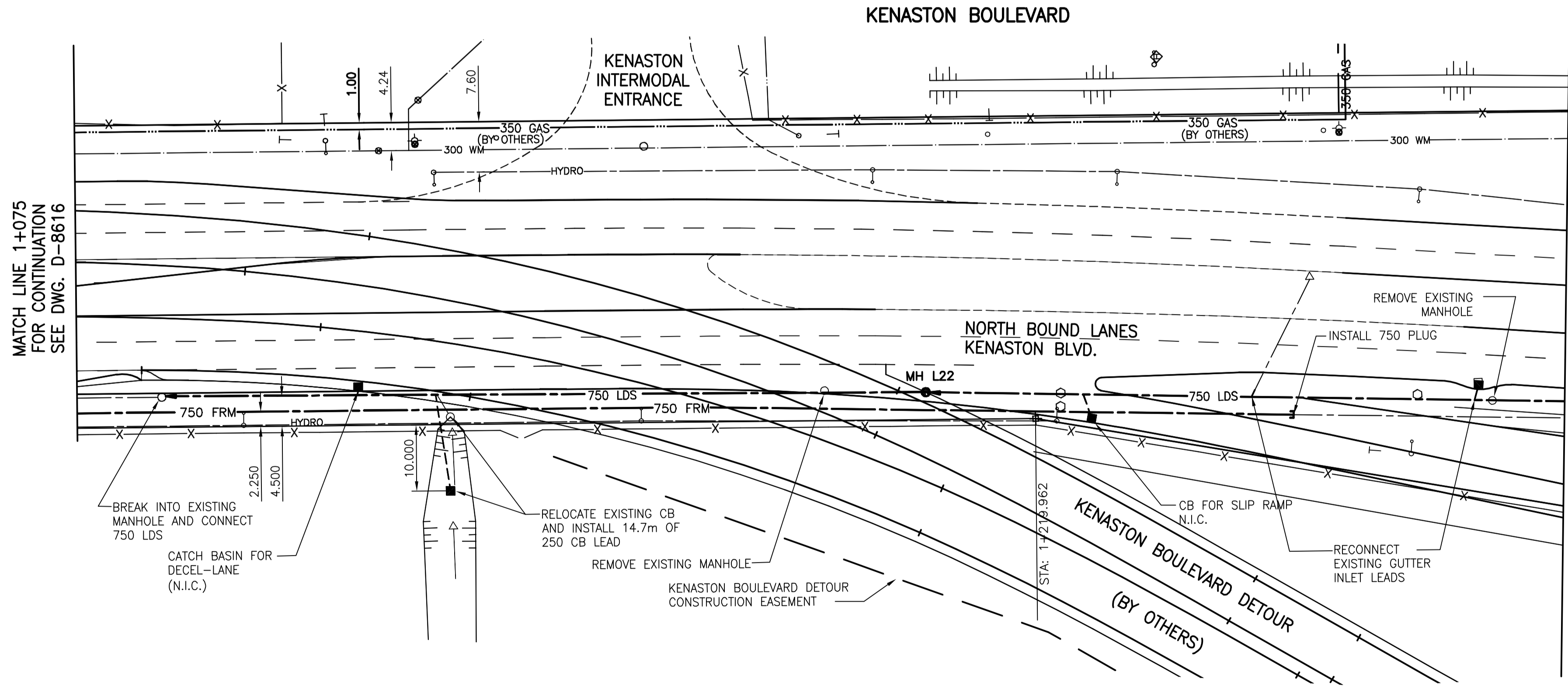


KU-46-661



1+100 1+150 1+200 1+250 1+300

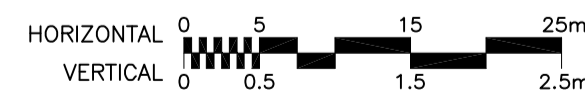
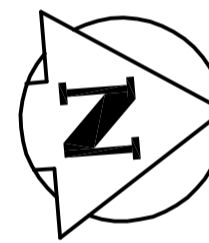
NOTE: STATIONS FOR LDS AND FORCEMAIN BASED ON CENTRELINE OF 750 FORCEMAIN.



MATCH LINE 1+300 FOR CONTINUATION SEE DWG. D-8627

NOTES:

- 1. DOUBLE INLETS TO BE SD-023 AND SD-024 WITH SD-108 COVER, SEE DETAIL DWG U20
2. ALL DOUBLE INLETS TO HAVE 250mm INTER CONNECTION PIPING AND 300 LEADS TO MAIN LINE, SEE DETAIL DWG U20
3. 750 LDS TO BE INSTALLED ON SAME ALIGNMENT AS EXISTING 375 LDS. EXISTING 375 LDS NOT SHOWN ON PLAN FOR CLARITY.
4. MULTI-USE SIDEWALK NOT SHOWN FOR CLARITY. REFER TO PAVEMENT DWG. P-3258-13 FOR ADDITIONAL INFORMATION.



BENCH MARK: BOLT IN 12.5m CONC. PILE, 2.4m N. OF S.L. OF WILKES AVE. (FENCE LINE), & 7m E. OF E. FACE OF 2ND TOWER W. OF THE MOST ELY. SET OF TRACKS OF C.P.R. LA RIVIERE SUBD.

METRIC

WHOLE NUMBERS INDICATE MILLIMETRES DECIMALIZED NUMBERS INDICATE METRES

WARNING

IF POWER EQUIPMENT OR EXPLOSIVES ARE TO BE USED FOR EXCAVATION ON THIS PROJECT THE CONTRACTOR MUST: 1) NOTIFY THE GAS COMPANY OF THE PROPOSED LOCATION OF EXCAVATION. 2) TAKE PRECAUTION TO AVOID DAMAGE TO GAS COMPANY INSTALLATIONS. SEE PROVINCIAL REGULATION 140/92 FOR DETAILS



Certificate of Authorization

Stantec Consulting Ltd.

No. 1301 Expiry: April 30, 2005

Legend table with columns for Existing and New symbols for various utilities and structures: GAS, MTS, HYDRO, VIDEON, TRAFFIC SIGNALS, LAND DRAINAGE SEWER, SANITARY/COMBINED SEWER, CATCH BASIN LEAD, WATERMAIN, SUBDRAIN, DITCH, MANHOLE, CATCH BASIN/CATCH PIT, C & G INLET WITH BOX, TREE, TEST HOLE, PROPERTY LINE, SURVEY BAR, GEODETIC MONUMENT, FENCE, BACK OF CURB, ELEVATION, HYDRANT, WATERMAIN VALVE, GAS LINE MARKER, LIGHT STANDARD, GUY WIRE, TRAFFIC SIGNAL, SIGN, SIGNAL PIT, HYDRO MARKER, BOLLARD, FORCEMAIN.

LOCATION APPROVED UNDERGROUND STRUCTURES

SUPV. U/G STRUCTURES COMMITTEE DATE

NOTE: LOCATION OF UNDERGROUND STRUCTURES AS SHOWN ARE BASED ON THE BEST INFORMATION AVAILABLE BUT NO GUARANTEE IS GIVEN THAT ALL EXISTING UTILITIES ARE SHOWN OR THAT THE GIVEN LOCATIONS ARE EXACT. CONFIRMATION OF EXISTENCE AND EXACT LOCATION OF ALL SERVICES MUST BE OBTAINED FROM THE INDIVIDUAL UTILITIES BEFORE PROCEEDING WITH CONSTRUCTION.

B.M. 66-001 ELEV. 233.425m

Stantec Consulting Ltd. logo and address: 905 Waverley Street, Winnipeg, Manitoba Tel 204-489-5900 Fax 204-453-9012

Revision table with columns: NO., REVISIONS, DATE, BY. Includes entries for ISSUED FOR TENDER (05.03.29), ISSUED FOR CLIENT REVIEW (05.02.28), and GUY WIRE (05.03.24).

ENGINEER'S SEAL

DESIGNED BY: JKH, CHECKED BY: AJR, DRAWN BY: TAG, APPROVED BY: GWM. ORIGINAL SEALED BY: A.J. RAPOSO P. ENG. 05.03.24. CONSULTANT DRAWING NO. I13703042-UI6

THE CITY OF WINNIPEG PUBLIC WORKS DEPARTMENT ENGINEERING DIVISION logo and name.

KENASTON UNDERPASS STERLING LYON PARKWAY (EAST) LAND DRAINAGE SYSTEM STA 1+075 TO STA 1+300. SHEET 46 OF 60. CAD FILE DRAWING NUMBER ken-frm-ug.dwg. CITY DRAWING NUMBER D-8626