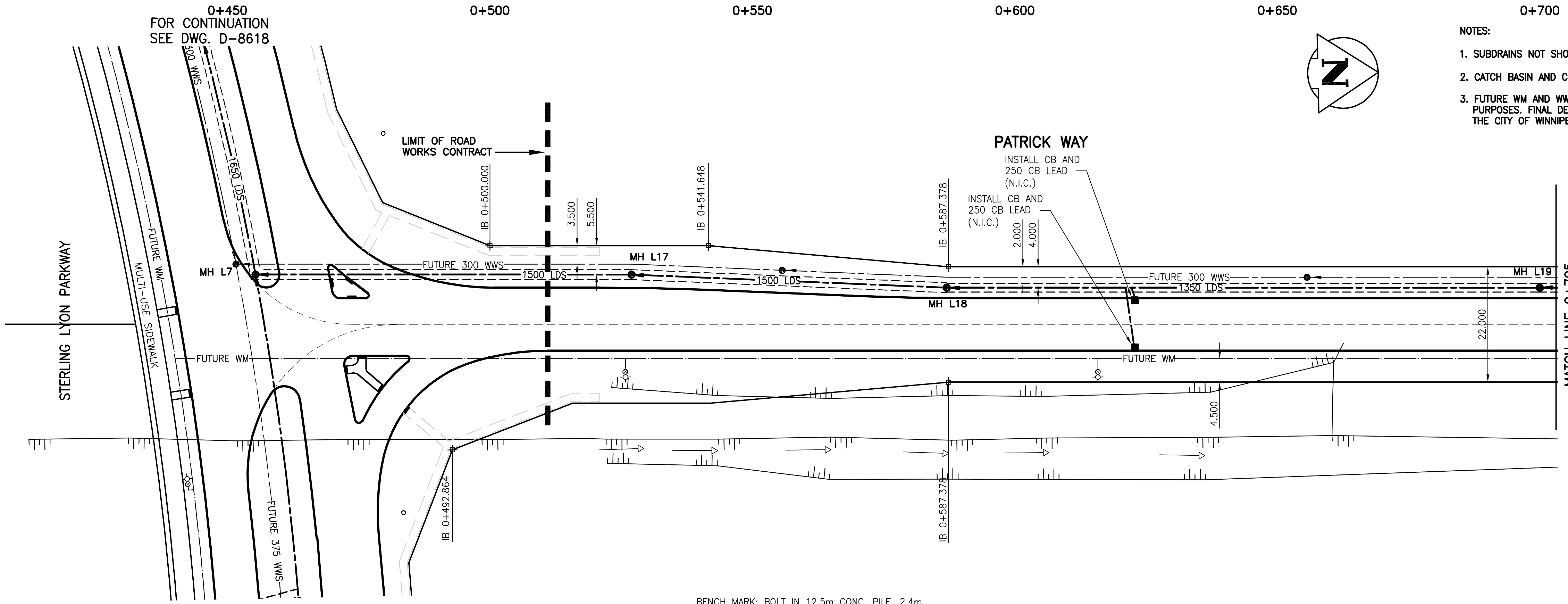
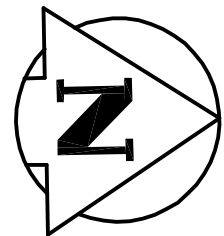


**NOTE:**  
STATIONS FOR ALL UNDERGROUND BASED ON CL OF PATRICK WAY.

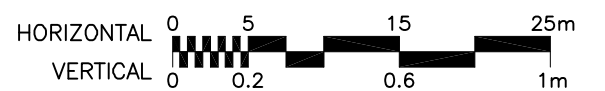
- NOTES:**
- SUBDRAINS NOT SHOWN FOR CLARITY, (N.I.C.)
  - CATCH BASIN AND CB LEADS (N.I.C.)
  - FUTURE WM AND WWS SHOWN FOR INFORMATION PURPOSES. FINAL DESIGN TO BE CONFIRMED BY THE CITY OF WINNIPEG, WATER AND WASTE DEPT.



**METRIC**  
WHOLE NUMBERS INDICATE MILLIMETRES  
DECIMALIZED NUMBERS INDICATE METRES

**WARNING**  
IF POWER EQUIPMENT OR EXPLOSIVES ARE TO BE USED FOR EXCAVATION ON THIS PROJECT THE CONTRACTOR MUST:  
1) NOTIFY THE GAS COMPANY OF THE PROPOSED LOCATION OF EXCAVATION.  
2) TAKE PRECAUTION TO AVOID DAMAGE TO GAS COMPANY INSTALLATIONS.  
SEE PROVINCIAL REGULATION 140/92 FOR DETAILS

BENCH MARK: BOLT IN 12.5m CONC. PILE, 2.4m N. OF S.L. OF WILKES AVE. (FENCE LINE), & 7m E. OF E. FACE OF 2nd TOWER W. OF THE MOST ELY. SET OF TRACKS OF C.P.R. LA RIVIERE SUBD.



EXISTING	LEGEND - PLAN	NEW	EXISTING	LEGEND - PLAN	NEW	EXISTING	LEGEND - PLAN	NEW
○	GAS	○	MANHOLE	●	HYDRANT	+	LOCATION APPROVED UNDERGROUND STRUCTURES	
□	MTS	□	CATCH BASIN/CATCH PIT	●	WATERMAIN VALVE	+		
△	HYDRO	△	C & G INLET WITH BOX	▲	GAS LINE MARKER	+		
◇	VIDEO	◇	TREE	+	LIGHT STANDARD	+		
⊙	TRAFFIC SIGNALS	⊙	TEST HOLE	+	GUY WIRE	+		
—	LAND DRAINAGE SEWER	—	PROPERTY LINE	+	TRAFFIC SIGNAL	+		
—	SANITARY/COMBINED SEWER	—	SURVEY BAR	+	SIGN	+		
—	CATCHBASIN LEAD	—	GEODETIC MONUMENT	+	SIGNAL PIT	+		
—	WATERMAIN	—	FENCE	+	HYDRO MARKER	+		
—	SUBDRAIN	—	BACK OF CURB	+	BOLLARD	+		
—	DITCH	—	ELEVATION	+	FORCEMAIN	+		

NO.	REVISIONS	DATE	BY
1	ISSUED FOR TENDER	05.03.29	GWM
0	ISSUED FOR CLIENT REVIEW	05.02.28	AJR

B.M.	66-001
ELEV.	233.425m

**Stantec Consulting Ltd.**  
905 Waverley Street, Winnipeg, Manitoba  
Tel 204-489-5900 Fax 204-453-9012

DESIGNED BY	JKH	CHECKED BY	AJR
DRAWN BY	TAG	APPROVED BY	GWM
AUTHORIZED BY:	R. FINGAS, P. ENG.	DATE:	05.03.24

ENGINEER'S SEAL  
ORIGINAL SEALED BY  
A.J. RAPOSO  
P. ENG.  
05.03.24

**THE CITY OF WINNIPEG**  
PUBLIC WORKS DEPARTMENT  
ENGINEERING DIVISION

**Winnipeg**

**KENASTON UNDERPASS**  
STERLING LYON PARKWAY (EAST)

LAND DRAINAGE SYSTEM  
STERLING LYON PARKWAY EAST TO STA 0+705

SHEET 39 OF 60  
CAD FILE DRAWING NUMBER patrick-ug.dwg  
CITY DRAWING NUMBER D-8624