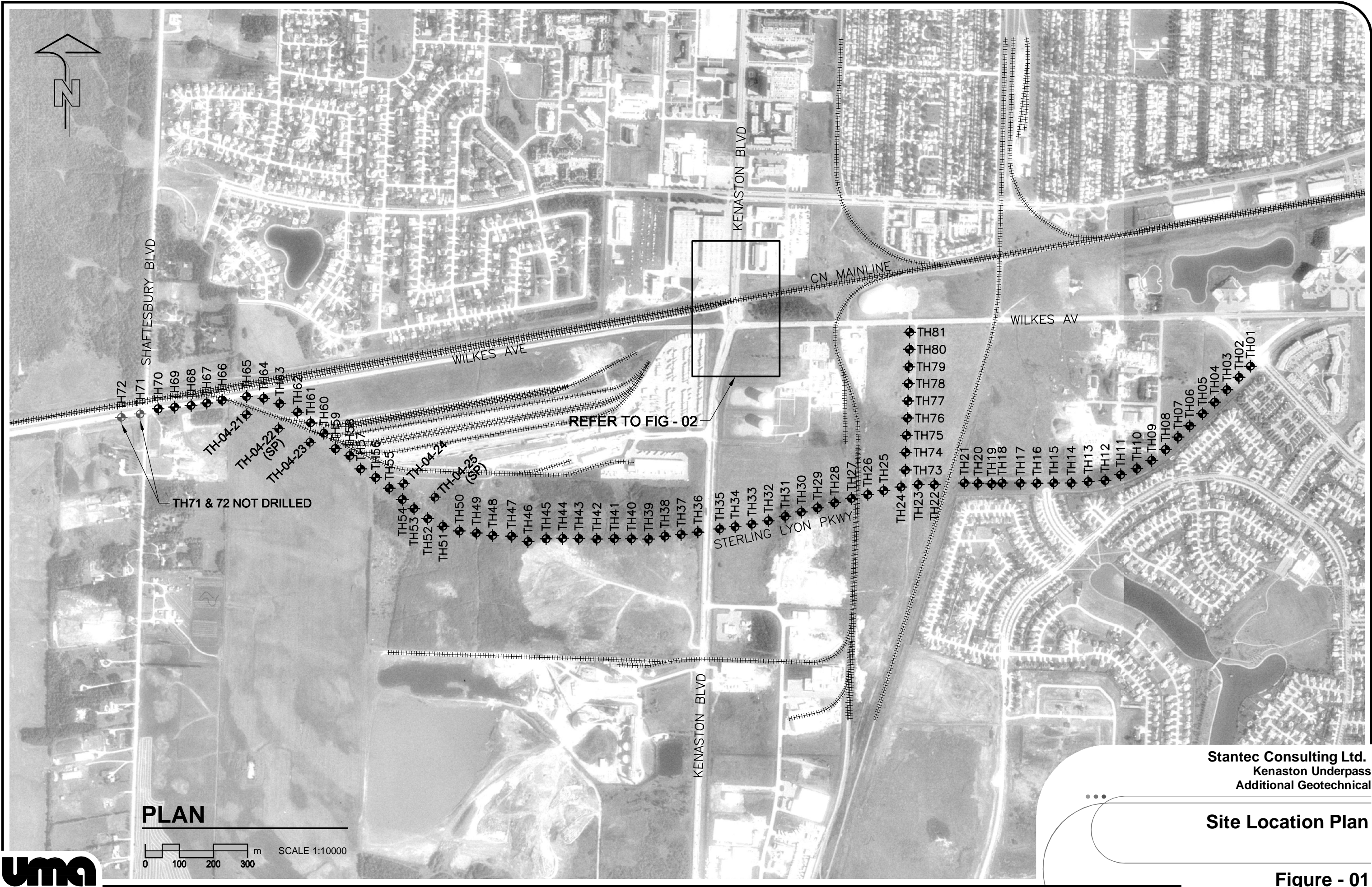
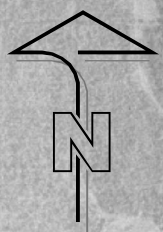
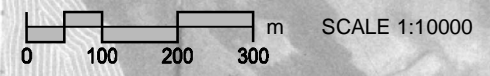


# **Geotechnical Report**

## **Figures**



**PLAN**



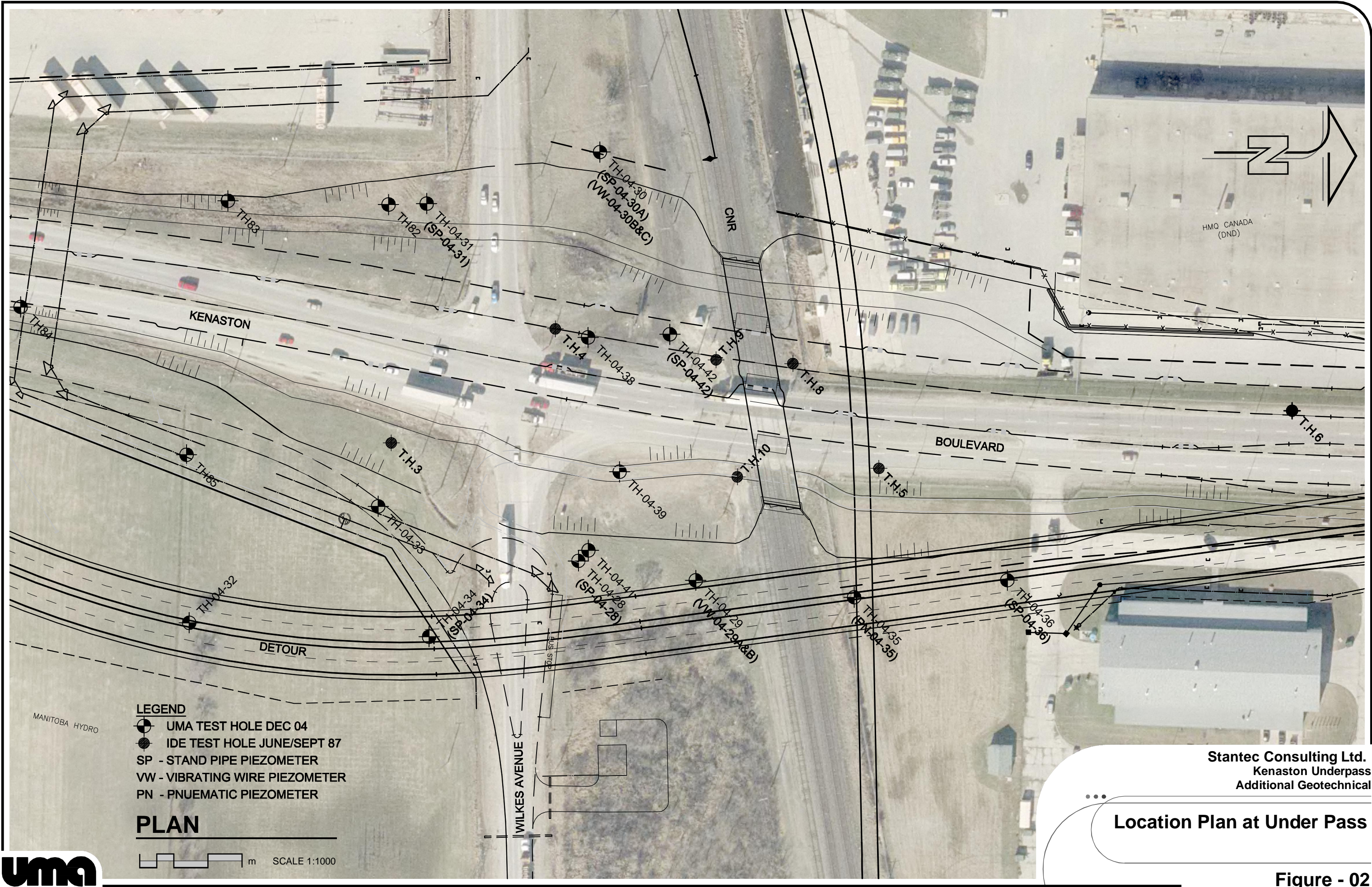
Stantec Consulting Ltd.  
Kenaston Underpass  
Additional Geotechnical

**Site Location Plan**

Figure - 01







**LEGEND**

- UMA TEST HOLE DEC 04
- IDE TEST HOLE JUNE/SEPT 87
- SP - STAND PIPE PIEZOMETER
- VW - VIBRATING WIRE PIEZOMETER
- PN - PNEUMATIC PIEZOMETER

**PLAN**

SCALE 1:1000

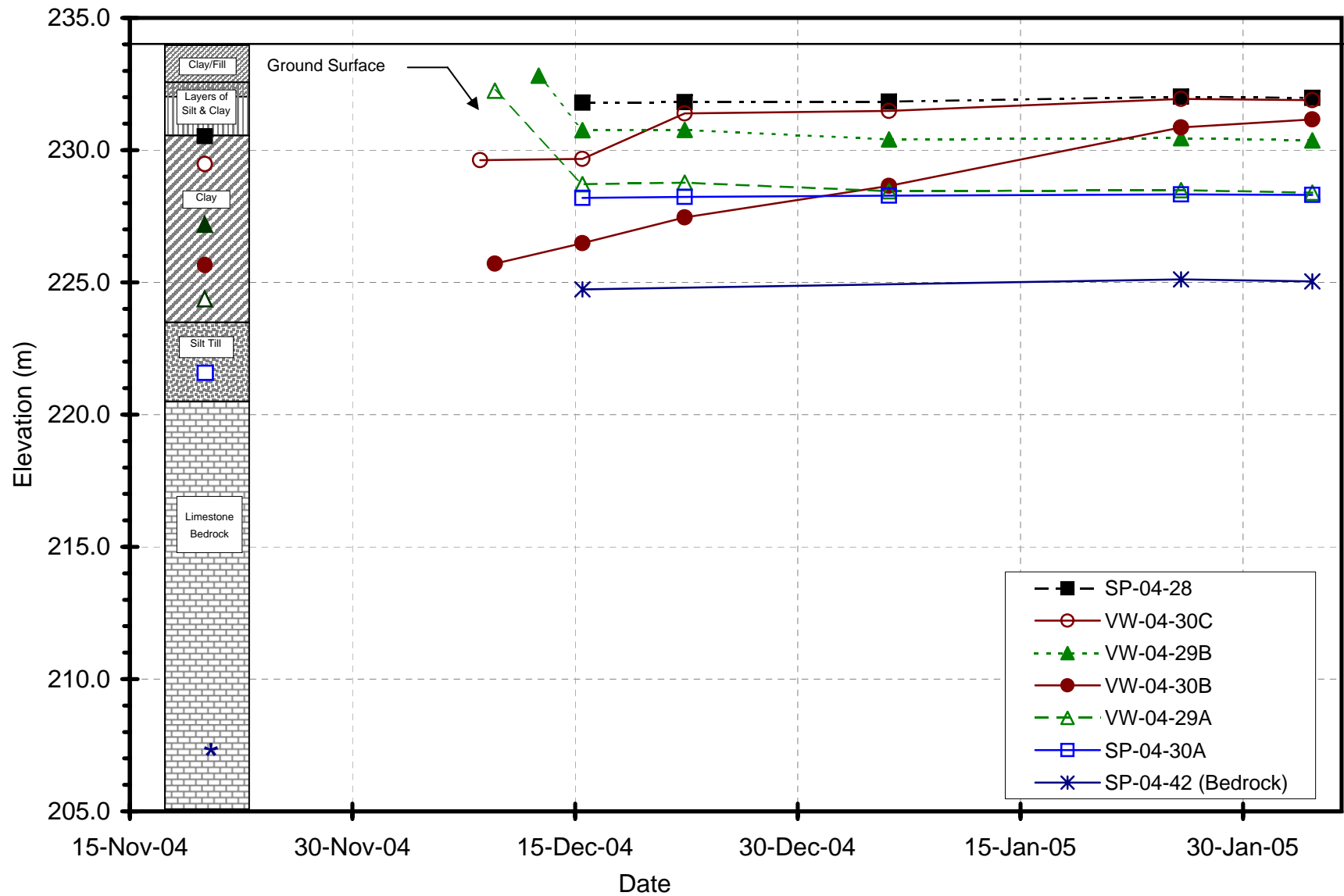
Stantec Consulting Ltd.  
 Kenaston Underpass  
 Additional Geotechnical

**Location Plan at Under Pass**

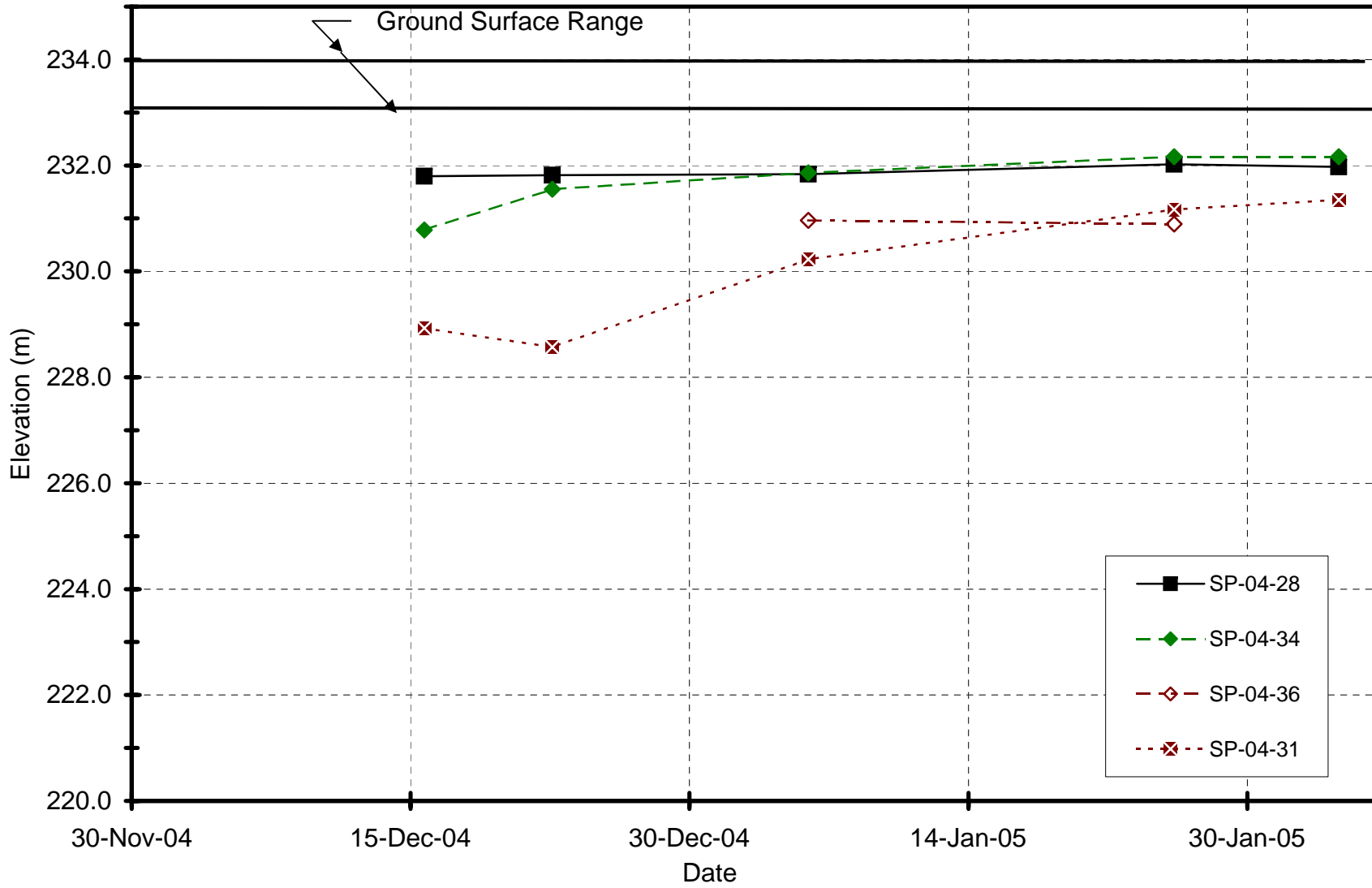


Figure - 02

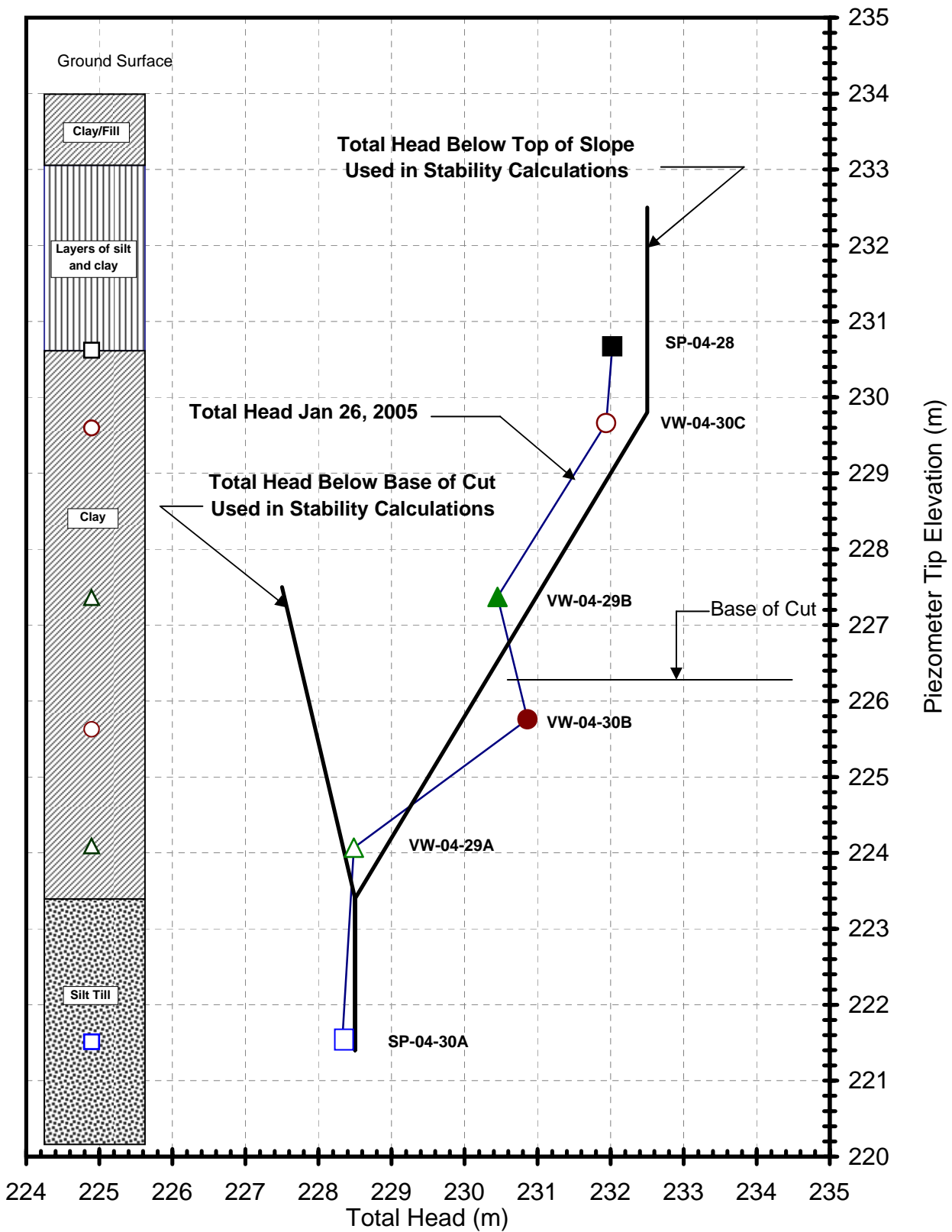




**Figure 3 - Piezometric Head vs. Time**  
**Piezometers Near Brigde**



**Figure 4 - Piezometric Head vs. Time  
Shallow Piezometers**



**Figure 5 - Head Distribution for Stability Calculations**

Title: Kenaston Underpass  
 Comments: Groundwater at Winter 2005 Levels  
 Name: 6.5 m cut, 5 to 1, 4 m bench 2.5 m fr bottom.gsz  
 Date: 2/28/2005

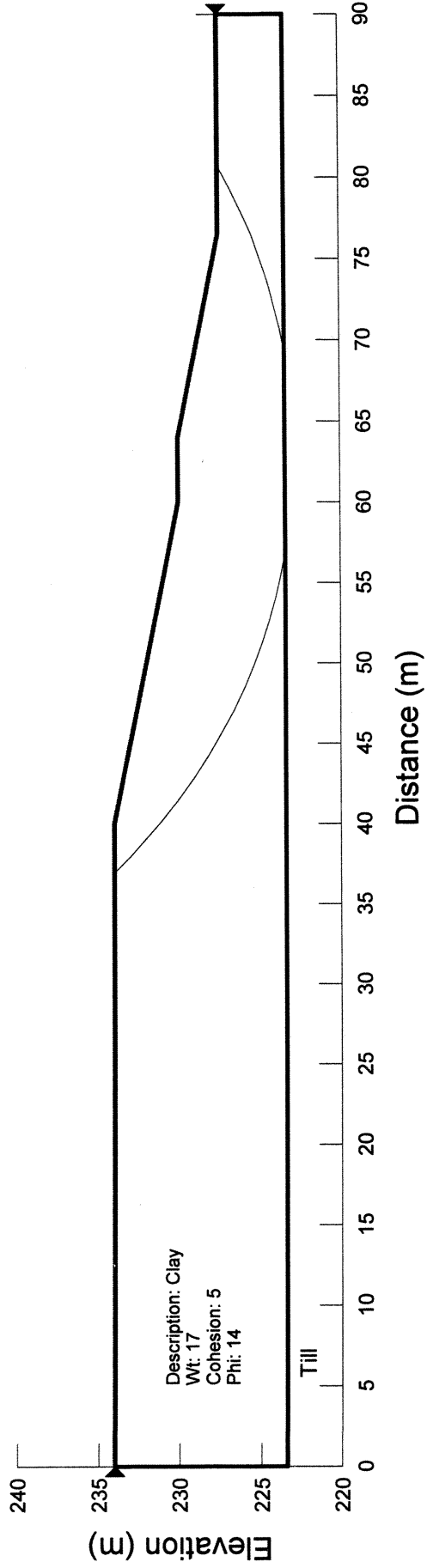
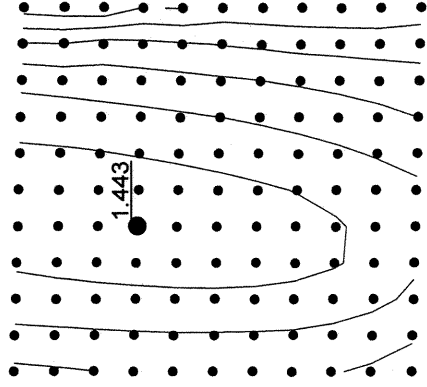


Figure 6 - Typical Slope Stability Output

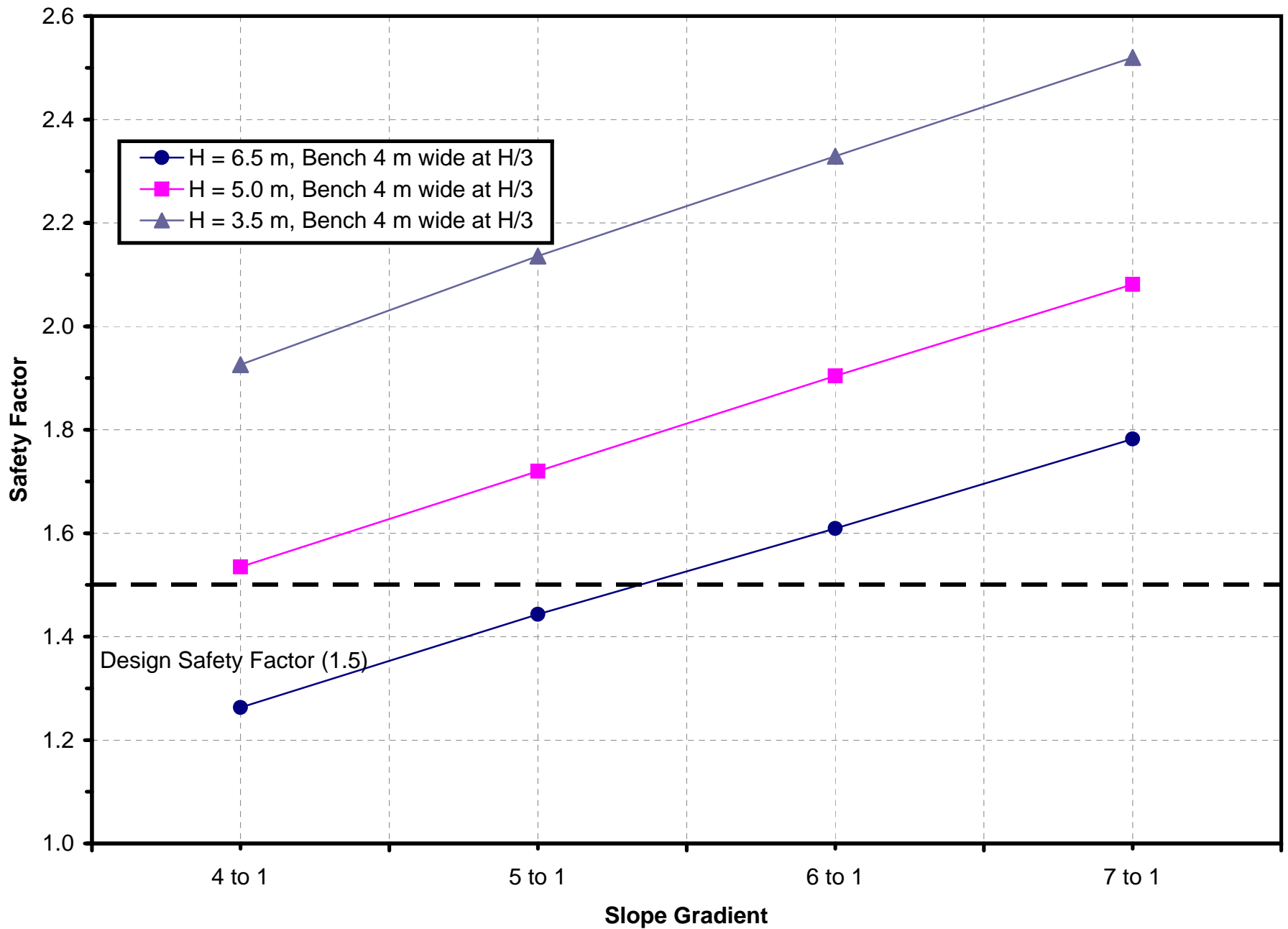
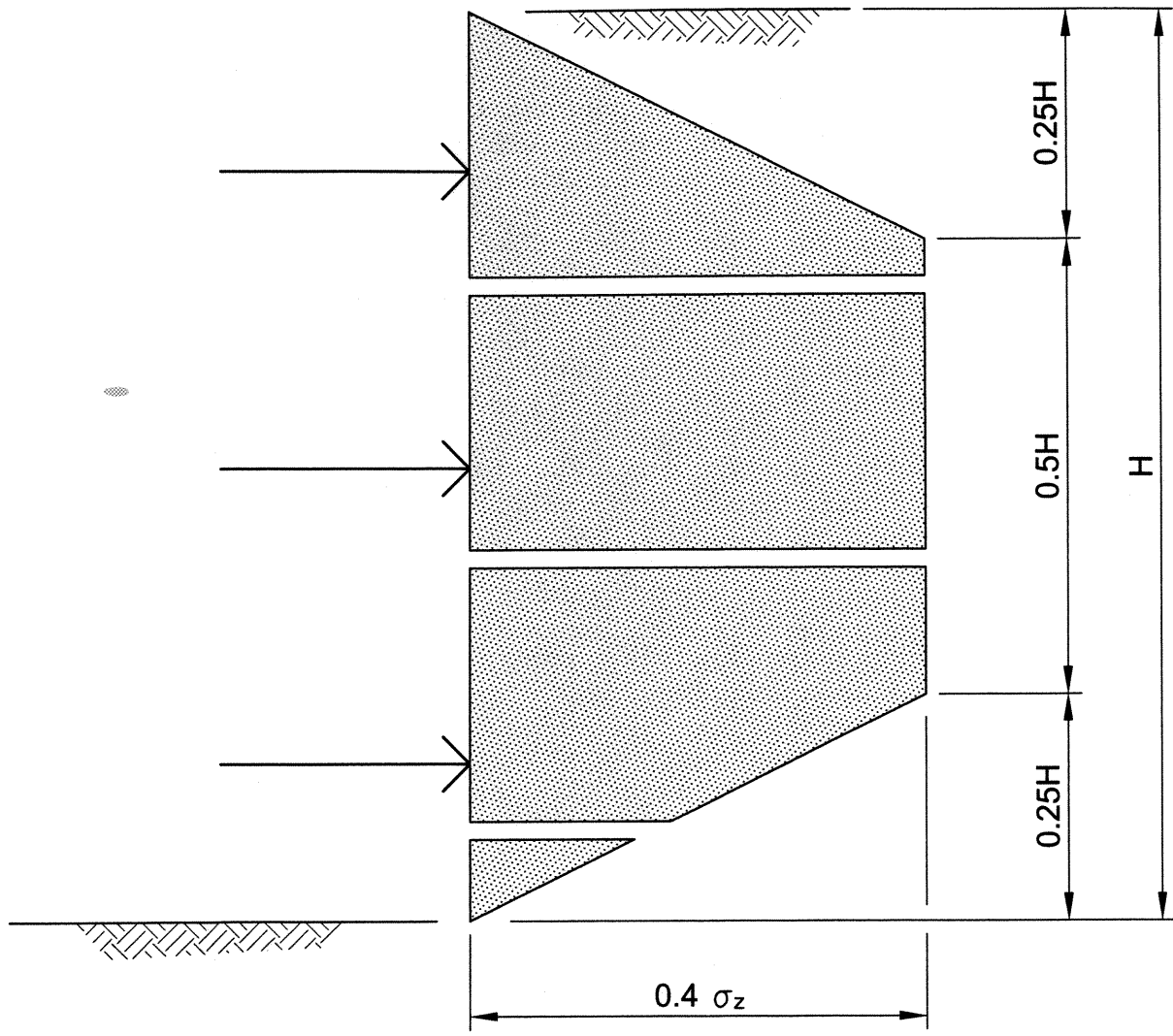


Figure 7 - Summary of Slope Stability Calculations





SOURCE: CANADIAN FOUNDATION ENGINEER MANUAL, 3rd EDITION.

Stantec Consulting Ltd.  
Kenaston Underpass

...  
**Apparent Earth Pressure Forces  
on Supports for Strutted Walls**