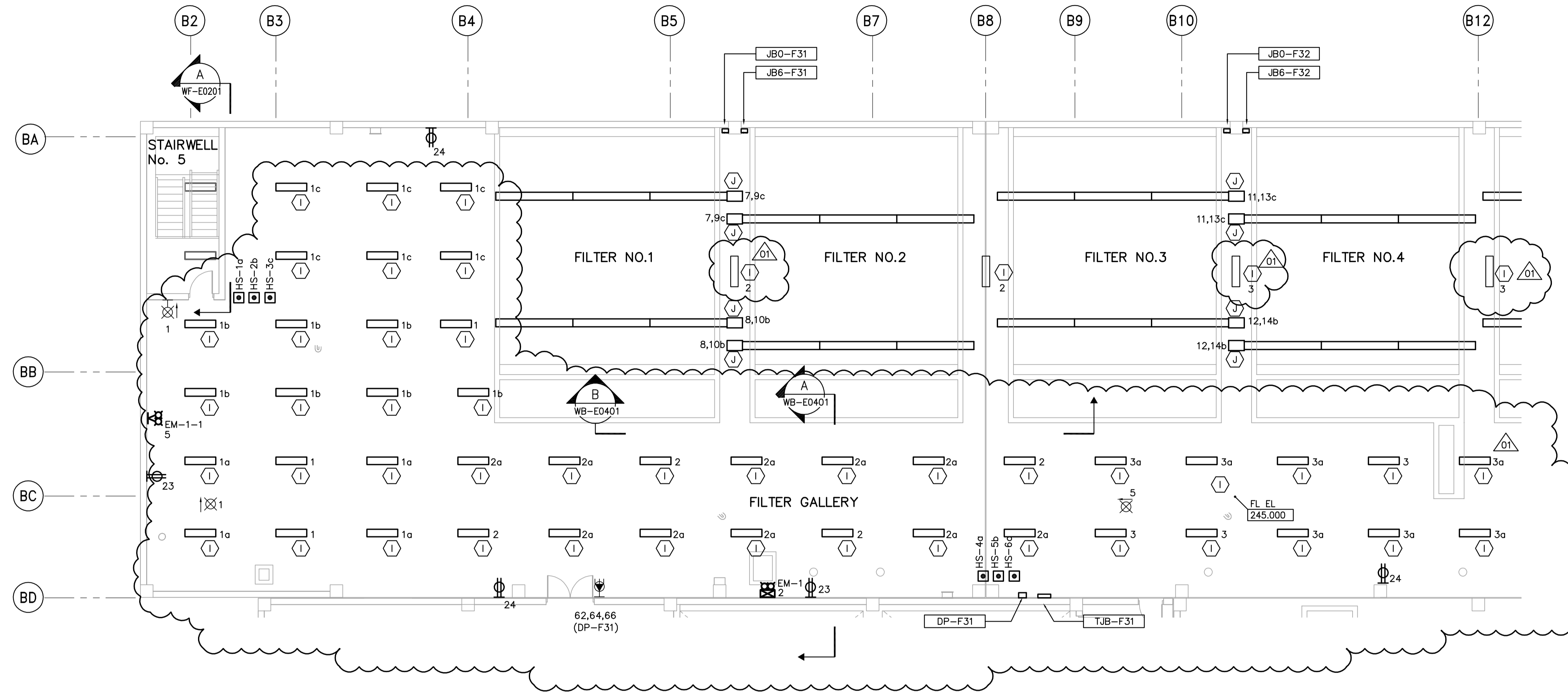
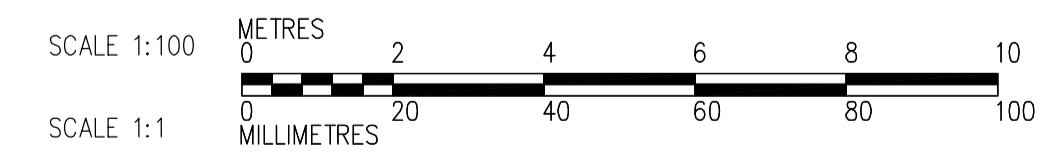
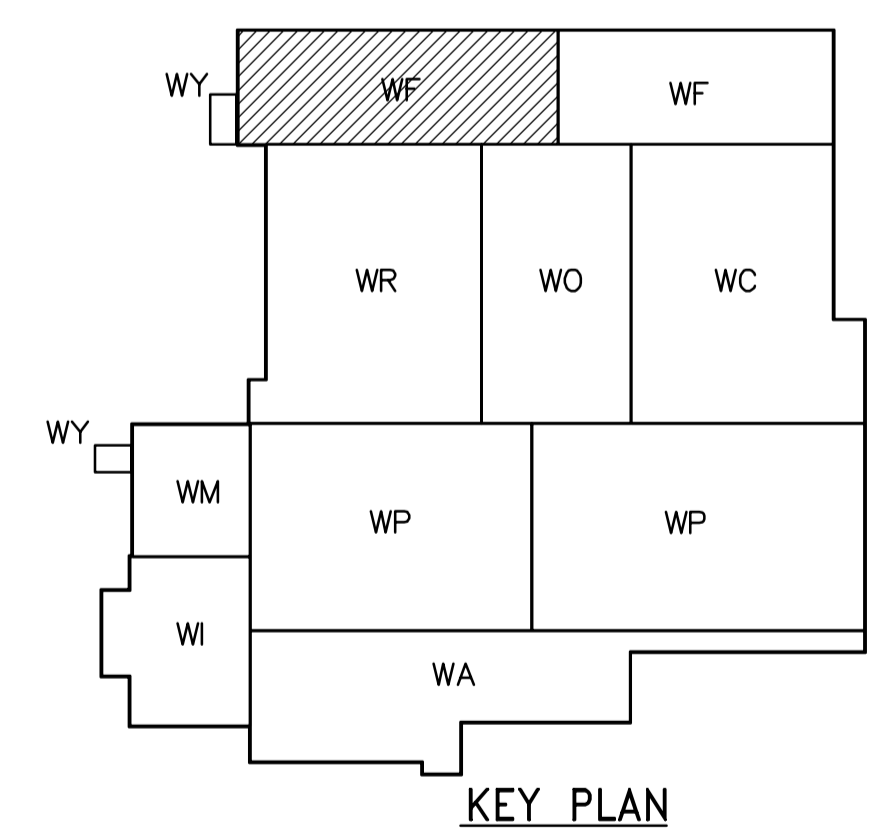


- NOTES:
1. ALL 120V AND 208V LOADS ARE FED FROM LP-H31
 2. EMERGENCY LIGHTING EM-X-1 ARE FED FROM BATTERY PACK EM-X.
 3. MOUNT TYPE A LUMINAIRE AT 3.0m ABOVE THE FLOOR.
 4. SEE DWG WB-E0401 FOR TYPE A FIXTURE MOUNTING DETAILS
 5. SEE DWG WB-E402 DET 2 FOR TYPE J FIXTURE MOUNTING DETAILS



THIRD FLOOR POWER AND LIGHTING PLAN (AREA 1)
1:100



<p>APEGN Certificate of Authorization CH2M HILL Canada Ltd. No. 1441 Expiry: April 30, 2007</p>	<p>B.M. ELEV.</p> <table border="1"> <tr><td> </td><td> </td><td> </td><td> </td></tr> <tr><td> </td><td> </td><td> </td><td> </td></tr> <tr><td> </td><td> </td><td> </td><td> </td></tr> <tr><td> </td><td> </td><td> </td><td> </td></tr> </table>																	<p>Frederickson Cooper ARCHITECTS</p>	<p>EarthTech A Tyco International Ltd. Company</p>	<p>ENGINEER'S SEAL</p> <p>ORIGINAL SIGNED BY L.D. LLEWELLYN 2006/03/29</p>	<p>THE CITY OF WINNIPEG WATER AND WASTE DEPARTMENT ENGINEERING DIVISION</p>	<p>WATER TREATMENT PLANT FILTRATION MECHANICAL AND ELECTRICAL</p>	<p>CITY FILE NUMBER</p> <p>SHEET OF</p>
<p>DESIGNED BY LL</p> <p>CHECKED BY ND</p> <p>DRAWN BY PS</p> <p>APPROVED BY AHL</p> <p>SCALE: 1:100</p> <p>RELEASED FOR CONSTRUCTION BY: R. SOROKOWSKI</p> <p>DATE 2005/07/13</p>	<p>CONSULTANT DRAWING NO. WF-E0135</p>	<p>CITY DRAWING NUMBER 1-0601F-A-E0135-001-01D</p>																					