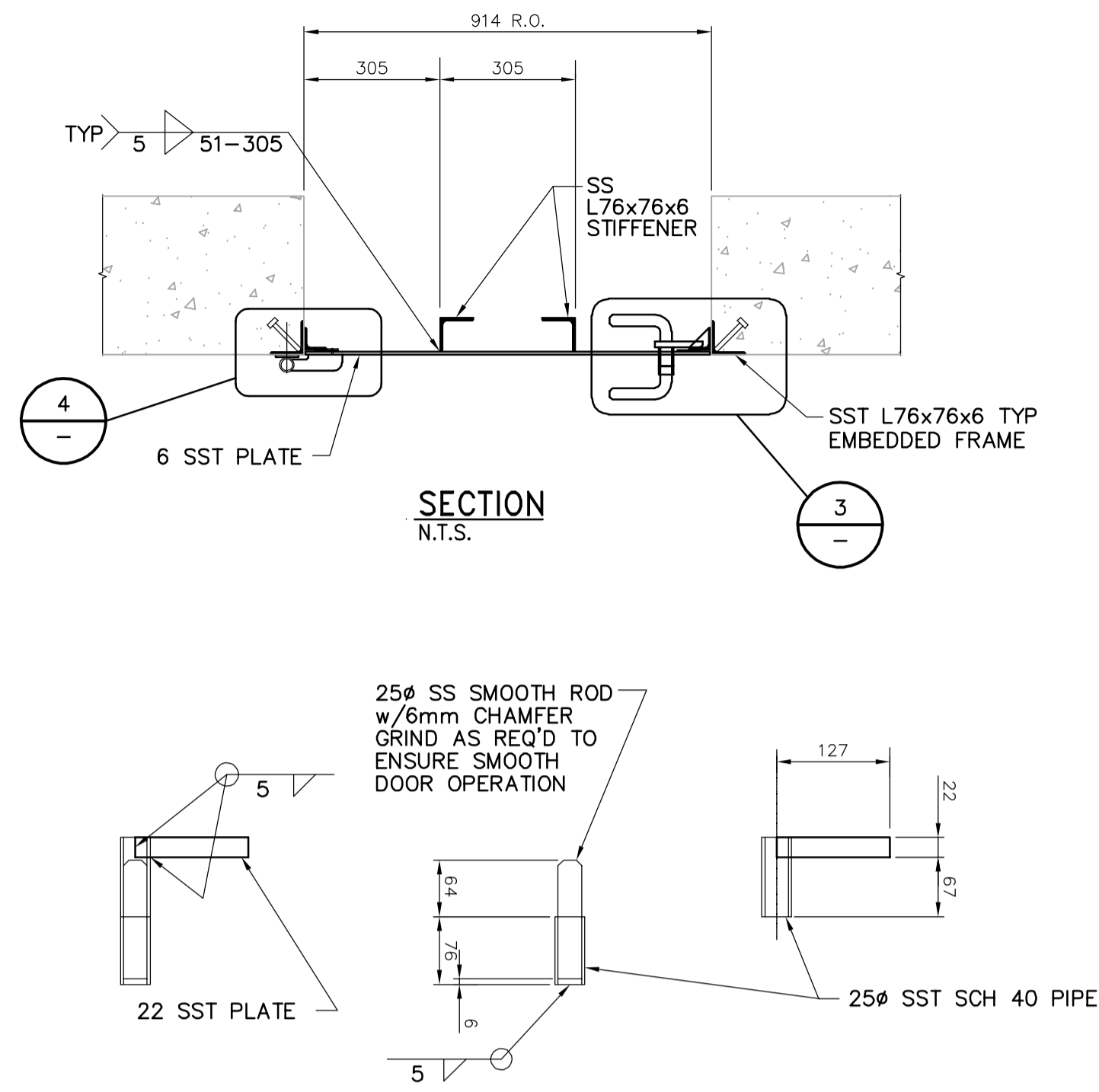


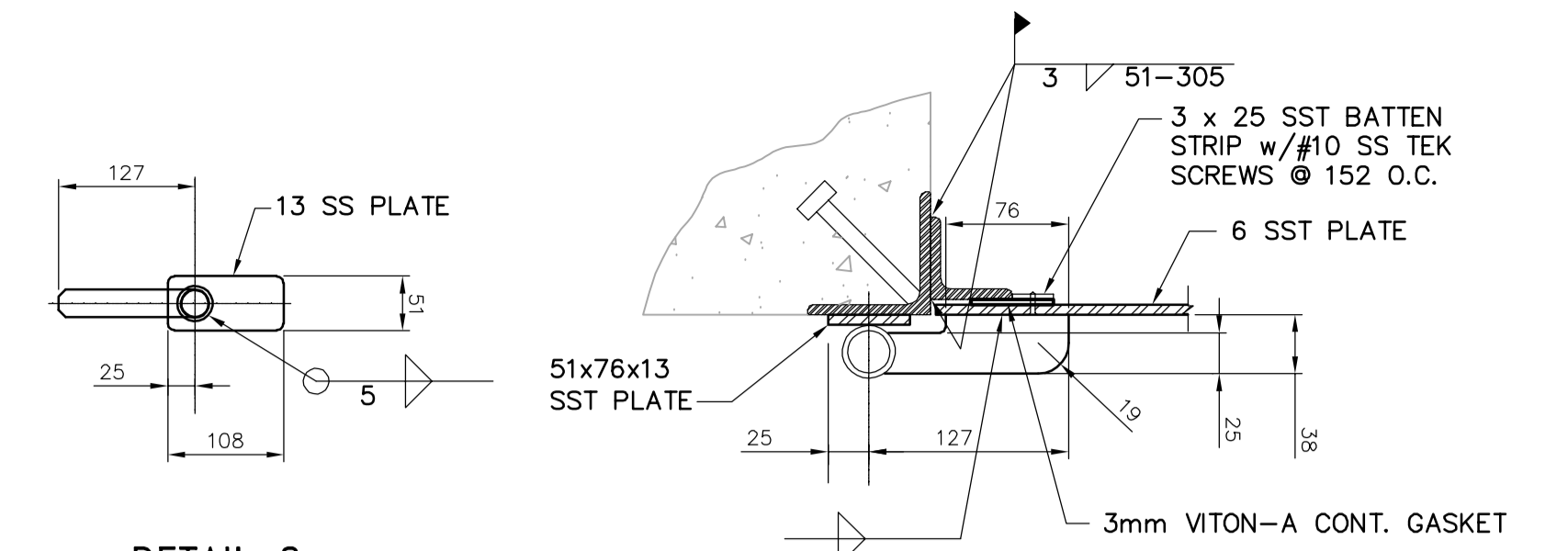
12 STAINLESS STEEL ACCESS DOOR
N.T.S.

NOTE:
ALL SST COMPONENTS TO 316.



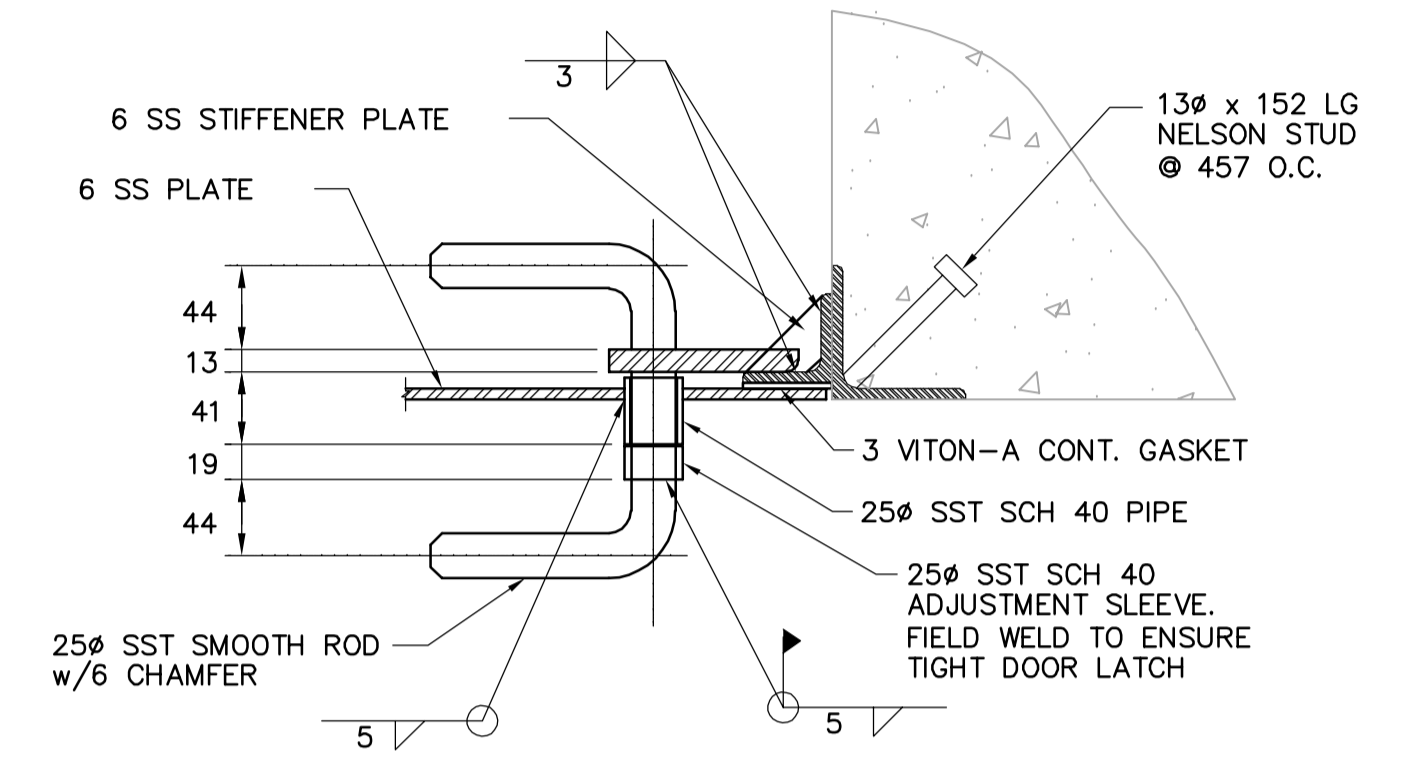
SECTION
N.T.S.

DETAIL 1
N.T.S.

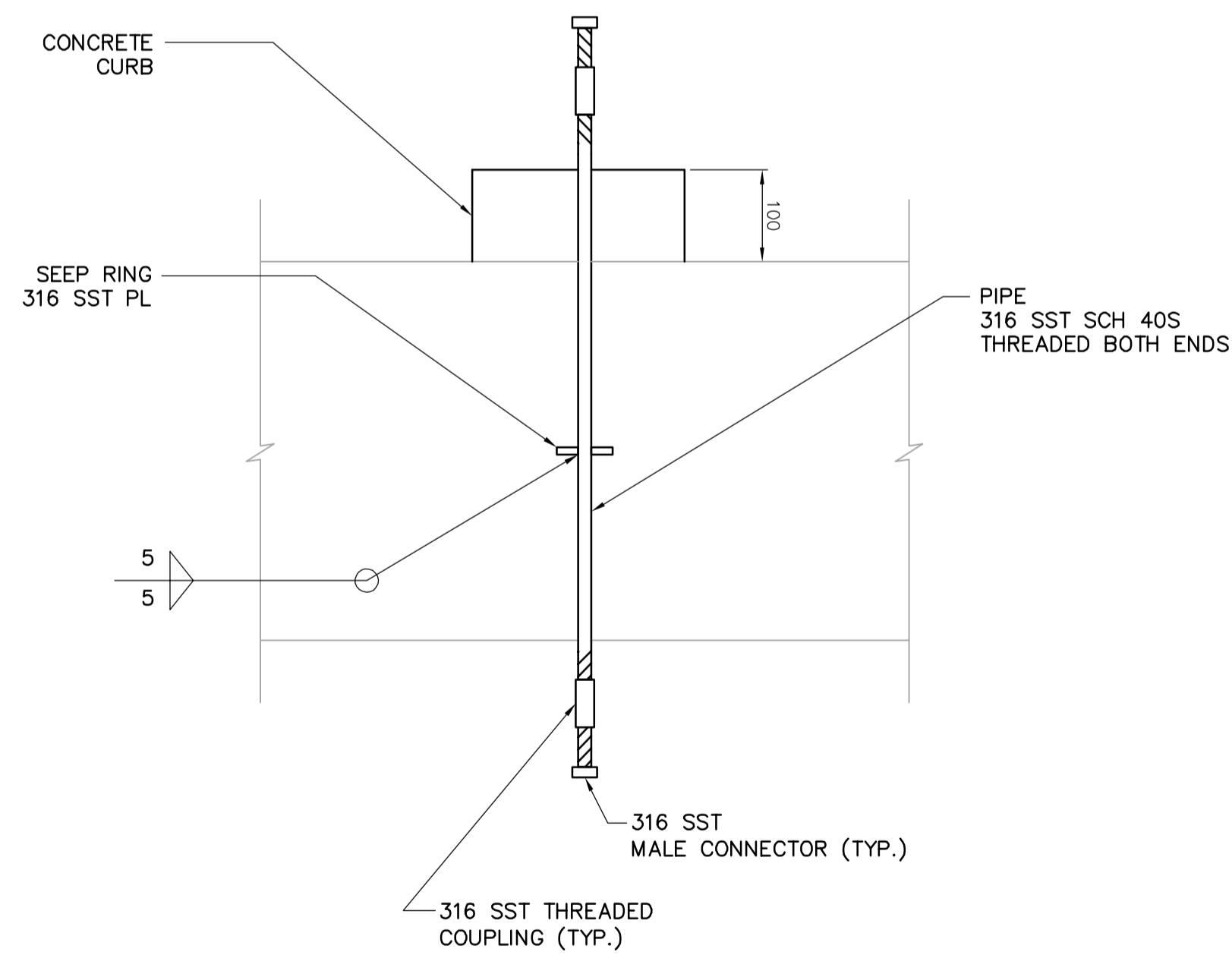


DETAIL 2
N.T.S.

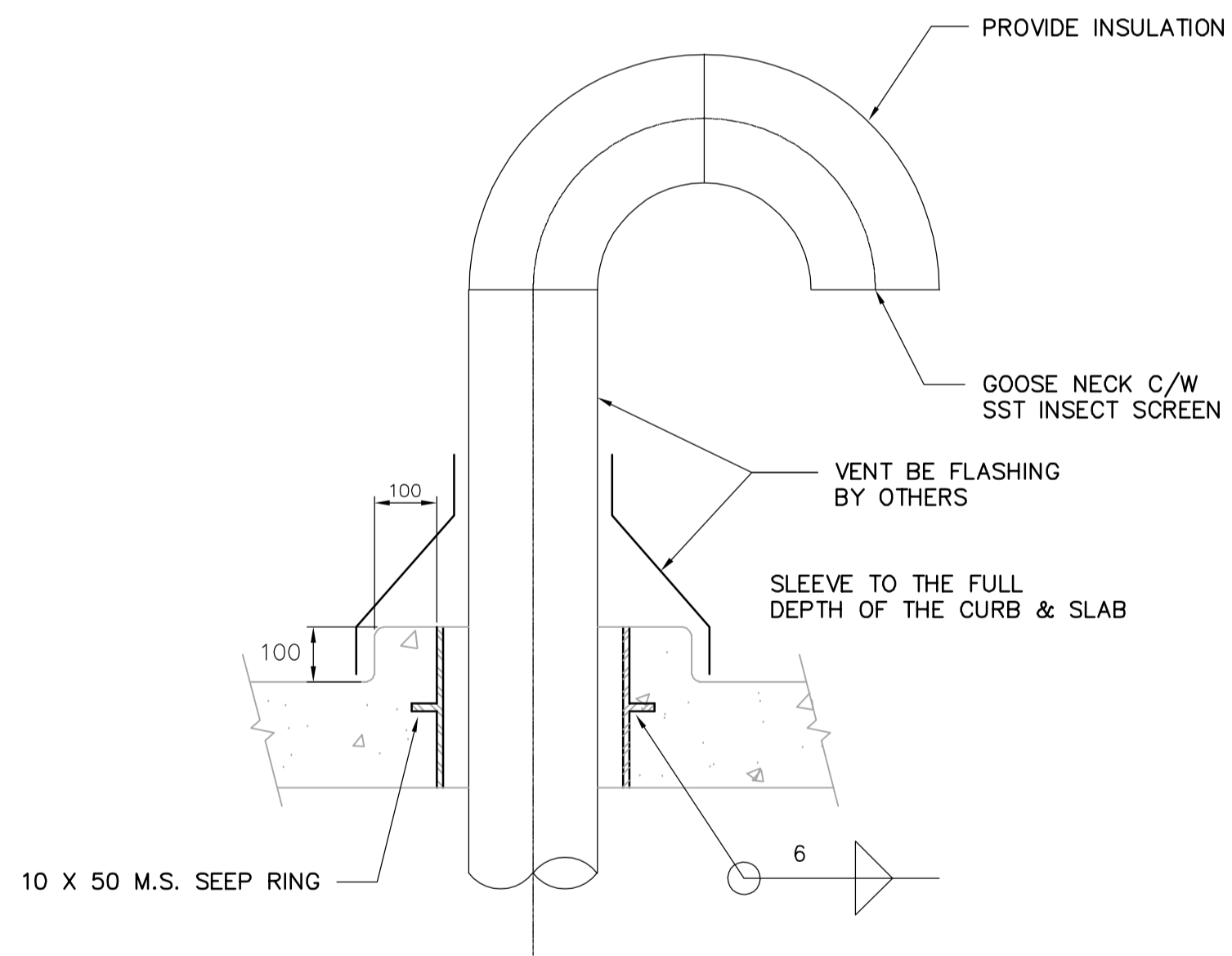
DETAIL 4
N.T.S.



DETAIL 3
N.T.S.



13 SAMPLE PIPING FLOOR PENETRATION
N.T.S.



14 GOOSENECK ROOF INTAKE OR DISCHARGE
N.T.S.

APECA
Certificate of Authorization
CH2M HILL Canada Ltd.
No. 1441 Expiry: April 30, 2007

NO.	REVISIONS	DATE	BY
01	742-2005 ADDENDUM 3	06/05/05	DC
00	ISSUED FOR TENDER	2006/02/03	DC

CH2MHILL
Frederickson Cooper
ARCHITECTS

EarthTech
A You International Ltd. Company

DESIGNED BY	DC	CHECKED BY	JS
DRAWN BY	EK	APPROVED BY	DJT
SCALE:	NONE	RELEASED FOR CONSTRUCTION BY:	R. SOROKOWSKI
DATE	2005/09/21	DATE	2006/02/08

ENGINEER'S SEAL
ORIGINAL SIGNED BY
P. WOBMA
2006/02/06
CONSULTANT DRAWING NO.
WB-M9453

THE CITY OF WINNIPEG
WATER AND WASTE DEPARTMENT
ENGINEERING DIVISION
WATER TREATMENT PLANT
MAIN BUILDING
MECHANICAL AND ELECTRICAL
PROCESS MECHANICAL
STANDARD DETAILS
CITY FILE NUMBER
SHEET OF
CITY DRAWING NUMBER
1-0601B-A-M9453-001-010