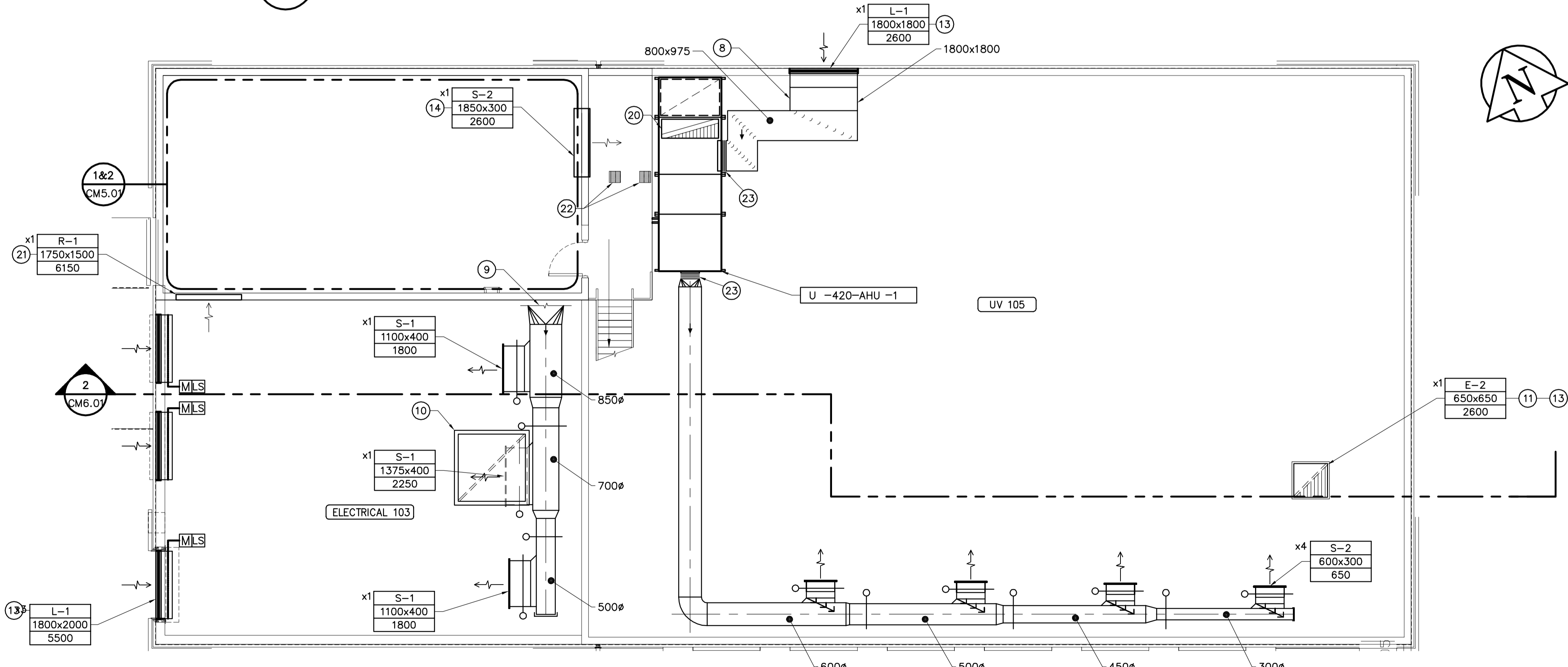


1 MAIN FLOOR LOWER VENTILATION PLAN
M4.01 SCALE 1:75



2 MAIN FLOOR UPPER VENTILATION PLAN
M4.01 SCALE 1:75

- DRAWING NOTES**
- 1 50mm THERMAL INSULATION ALONG ENTIRE LENGTH OF O/A DUCT.
 - 2 50mm ACOUSTICAL INSULATION INSIDE ENTIRE LENGTH OF RETURN AIR DUCT.
 - 3 CONNECT TO U-410-AHU-1.
 - 4 CONNECT TO U-419-EF.
 - 5 CONNECT TO WASTE HEAT DAMPER ON U-410-AHU-1.
 - 6 ALLOW CLEARANCE FOR FILTER REMOVAL.
 - 7 50mm THERMAL INSULATION ALONG ENTIRE 1600x200 DUCT.
 - 8 50mm THERMAL INSULATION FROM EXTERIOR WALL TO O/A OPENING ON U-420-AHU-1.
 - 9 SEE MECHANICAL PLAN CM5.01 FOR CONTINUATION.
 - 10 DRIP PAN OUTLINE FOR U-419-EF.
 - 11 EXHAUST GRILLE AND EXHAUST DUCT UP TO U-426-EF.
 - 12 THERMOSTAT AND HUMIDISTAT CONTROLS FOR U-420-AHU-1.
 - 13 INSECT SCREEN SHALL BE INSTALLED AT LOUVER.
 - 14 SUPPLY AIR DIFFUSER c/w FIRE DAMPER FROM WASTE HEAT DAMPER ON U-410-AHU-1.
 - 15 WASHROOM DOOR TO BE UNDERCUT BY 25mm TO ALLOW AIR TRANSFER.
 - 16 DIFFERENTIAL STATIC PRESSURE SENSOR FOR U-410-AHU-1.
 - 17 DIFFERENTIAL STATIC PRESSURE SENSOR FOR U-420-AHU-1 AND U-426-EF.
 - 18 OUTDOOR AIR TEMPERATURE SENSOR FOR COOLING SYSTEM.
 - 19 OUTDOOR AIR TEMPERATURE SENSOR FOR HEATING SYSTEM.
 - 20 EXHAUST AIR DUCT UP TO GH-2 ON ROOF.
 - 21 c/w FIRE DAMPER.
 - 22 300x300 ACCESS OPENINGS IN MEZZANINE FLOOR FOR PIPE LIFTING. SEE STRUCTURAL DRAWINGS FOR LOCATION.
 - 23 TYPICAL FLEX CONNECTION.

- GENERAL NOTES**
1. COORDINATE WITH OTHER TRADES SO AS TO PREVENT CONFLICTS.
 2. ALL SENSORS (THERMOSTATS, ETC.) SHALL BE MOUNTED 1500mm ABOVE FINISHED FLOOR.
 3. PROVIDE 100mm HOUSEKEEPING PADS UNDER ALL FLOOR MOUNTED AIR HANDLING EQUIPMENT, PUMPS AND AIR COMPRESSORS.

APEGM
Certificate of Authorization
Earth Tech Canada Inc.
No. 730 Expiry: April 30, 2005

B.M. ELEV.			
DESIGNED BY	PL	CHECKED BY	AMA
DRAWN BY	DC	APPROVED BY	DT
HOR. SCALE:	AS NOTED	RELEASED FOR CONSTRUCTION BY:	T. KJARTANSON
VERTICAL SCALE:	AS NOTED	DATE	2005-02-18
NO. REVISIONS	DATE	BY	DATE
0	ISSUED FOR TENDER	05/02/18	JEH
		2004/12/08	

EARTH TECH
Earth Tech (Canada) Inc. Winnipeg, Manitoba 204.477.5381

DESIGNED BY: PL
DRAWN BY: DC
CHECKED BY: AMA
APPROVED BY: DT

HOR. SCALE: AS NOTED
VERTICAL SCALE: AS NOTED

RELEASED FOR CONSTRUCTION BY: T. KJARTANSON
DATE: 2005-02-18

ENGINEER'S SEAL
ORIGINAL SIGNED BY
P.V. LAITINEN
FEB. 18/05
CONSULTANT DRAWING NO.
66303D-CM4.01

THE CITY OF WINNIPEG
Winnipeg WATER AND WASTE DEPARTMENT

**NEWPCC - SECONDARY EFFLUENT
UV DISINFECTION FACILITY**

MECHANICAL
MAIN FLOOR VENTILATION PLAN

CITY FILE NUMBER
SHEET 5 OF 18
CITY DRAWING NUMBER