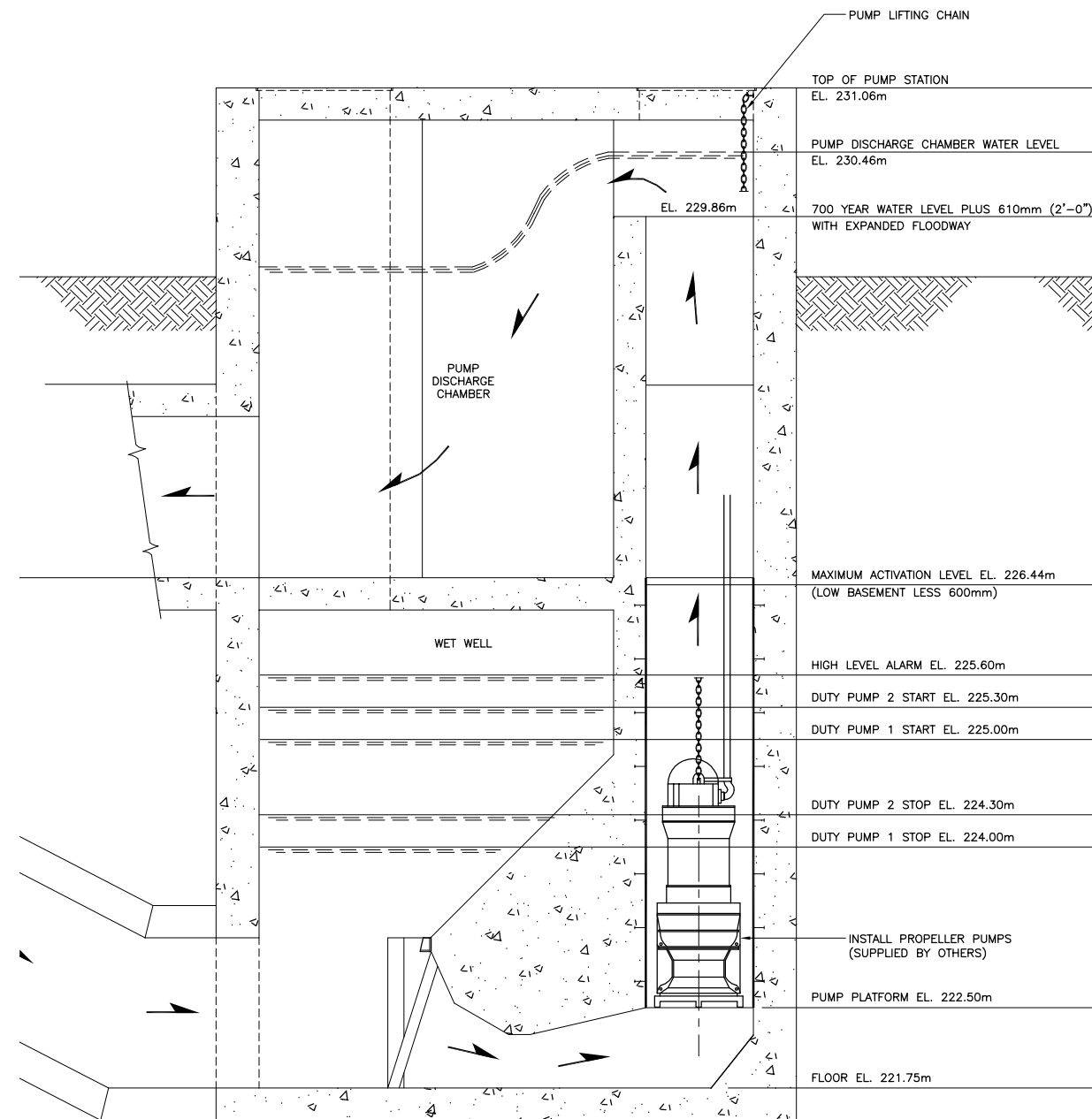
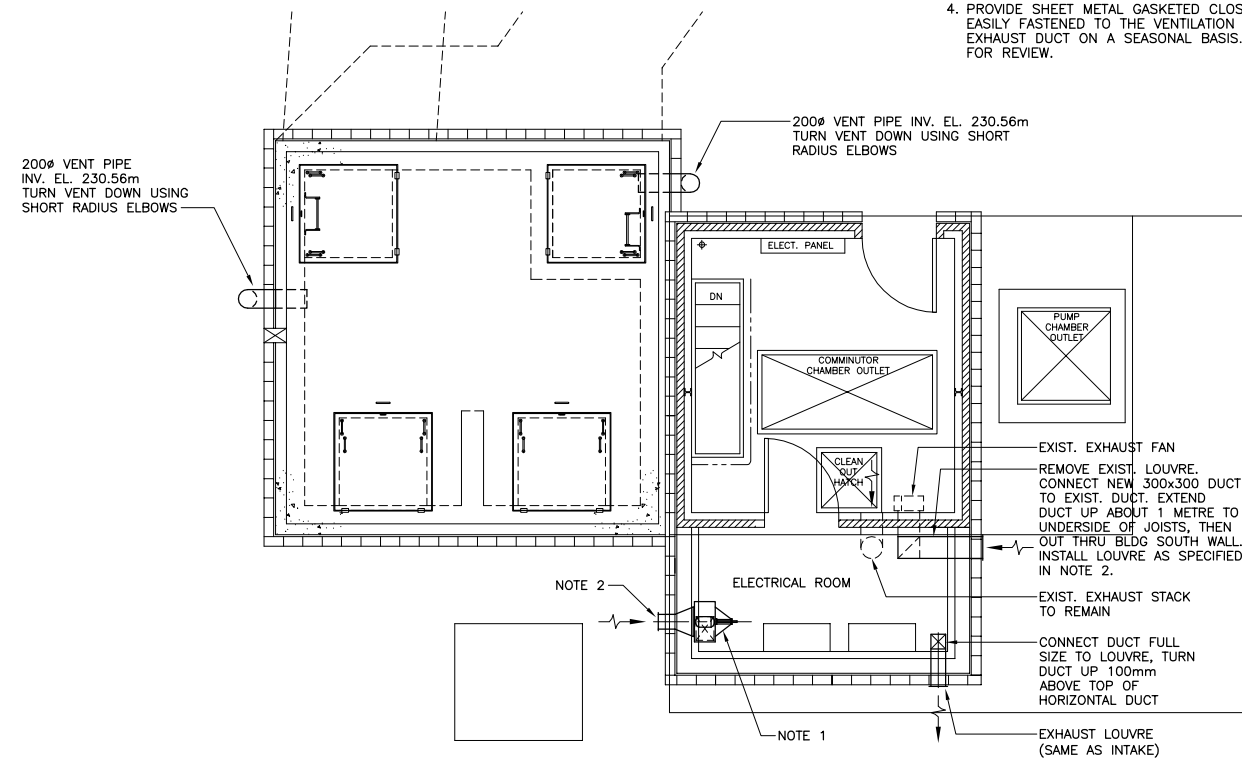


NOTES:

1. PROVIDE DUCT FROM LOUVRE TO VENTILATION FAN. SEAL DUCTWORK WATERTIGHT. SET FAN TO DISCHARGE DOWN. HANG FAN FROM ROOF FRAMING.
2. 450mm x 300mm LOUVRE SHALL BE "E.H. PRICE" K609 HP, FIXED BLADE c/w BIRD SCREEN OR APPROVED EQUAL.
3. BEFORE INSTALLING, CONFIRM AND COORDINATE EXACT HEIGHT OF VENTILATION FAN AND EXHAUST LOUVRE WITH OTHER TRADES AND CONTRACT ADMINISTRATOR.
4. PROVIDE SHEET METAL GASKETED CLOSURE PANELS THAT CAN BE EASILY FASTENED TO THE VENTILATION FAN AND ELECTRICAL ROOM EXHAUST DUCT ON A SEASONAL BASIS. SUBMIT SHOP DRAWINGS FOR REVIEW.



1 SECTION - FLOOD PUMP STATION
SCALE: 1:30



2 PLAN - ELECTRICAL ROOM
SCALE: 1:50

METRIC

WHOLE NUMBERS INDICATE MILLIMETRES
DECIMALIZED NUMBERS INDICATE METRES



SCALE: 1:250 METRIC A1
1:500 METRIC A3



Certificate of Authorization
KGS Group

No. 245 Expiry: April 30, 2006

B.M.	XX-XXX				
ELEV.	XXX.XXX				
0	ISSUED FOR CONSTRUCTION	05/12/05	RD		
	NO. REVISIONS	DATE	BY	DATE	05/11/08

KGS GROUP
CONSULTING ENGINEERS & PROJECT MANAGERS
WINNIPEG (204) 896-1209
THUNDER BAY (807) 345-2233

DESIGNED BY	CMS	CHECKED BY	CMS
DRAWN BY	EDC	APPROVED BY	
SCALE:	AS NOTED	RELEASED FOR CONSTRUCTION:	
		DATE	

ENGINEER'S SEAL
ORIGINAL DRAWING
SIGNED BY:
R. DERKSEN
05/12/07
CONSULTANT DRAWING NO.
05-0107-13_17

THE CITY OF WINNIPEG
WATER & WASTE DEPARTMENT

HAWTHORNE FLOOD PUMPING STATION UPGRADE

MECHANICAL DETAILS

SHEET **17** OF **24**
CAD FILE DRAWING NUMBER
05-0107-13_17
CITY DRAWING NUMBER
LD-3254