

SEWER SERVICE INFORMATION		
ADDRESS	SIZE	R DIST JUNCTION TIE
250 CENTENNIAL ST	-	5.79 N OF SL
RESIDENTIAL	-	84.42 S 2ND MH S ACADEMY RD
255 CENTENNIAL ST	-	6.10 S OF NL
RESIDENTIAL	-	91.44 S 2ND MH S ACADEMY RD
258 CENTENNIAL ST	-	4.27 S OF NL
RESIDENTIAL	-	92.04 S 2ND MH S ACADEMY RD
259 CENTENNIAL ST	-	3.96 S OF NL
RESIDENTIAL	-	93.50 N MH AT KINGSWAY
262 CENTENNIAL ST	-	4.27 S OF NL
RESIDENTIAL	-	CONNECTED TO 300 LDS
263 CENTENNIAL ST	-	3.96 N OF SL
RESIDENTIAL	-	78.20 N MH AT KINGSWAY
264 CENTENNIAL ST	-	2.44 S OF NL
RESIDENTIAL	-	69.50 N MH AT KINGSWAY
265 CENTENNIAL ST	-	70.70 N MH AT KINGSWAY
RESIDENTIAL	-	2.44 S OF NL
266 CENTENNIAL ST	-	62.30 N MH AT KINGSWAY
RESIDENTIAL	-	63.10 N MH AT KINGSWAY
267 CENTENNIAL ST	-	5.79 N OF SL
RESIDENTIAL	-	47.20 N MH AT KINGSWAY
270 CENTENNIAL ST	-	1.83 S OF NL
RESIDENTIAL	-	47.90 N MH AT KINGSWAY
274 CENTENNIAL ST	-	32.0 N MH AT KINGSWAY
RESIDENTIAL	-	3.35 N OF SL
275 CENTENNIAL ST	-	24.40 N MH AT KINGSWAY
RESIDENTIAL	-	7.01 N OF SL
278 CENTENNIAL ST	-	17.70 N MH AT KINGSWAY
RESIDENTIAL	-	1.22 S OF NL
281 CENTENNIAL ST	-	17.0 N MH AT KINGSWAY
RESIDENTIAL	-	-

WATER SERVICE INFORMATION					
ADDRESS	SIZE (mm)	SIZE (mm) & TYPE (STREET) (PROP)	SHORT & LONG MEASUREMENT	CORP. LOCATION	REMARKS
250 CENTENNIAL ST	20	COPPER	3.05 SNL HSE	0.3 S OF S/C	-
RESIDENTIAL	20	COPPER	1.98 SNL HSE	1.2 S OF S/C	-
255 CENTENNIAL ST	20	COPPER	92.05 NNL KINGSWAY	-	-
RESIDENTIAL	20	COPPER	1.52 SNL HSE	OPP S/C	-
258 CENTENNIAL ST	20	COPPER	89.0 NNL KINGSWAY	0.3 S OF S/C	-
RESIDENTIAL	20	COPPER	79.10 NNL KINGSWAY	-	-
262 CENTENNIAL ST	20	COPPER	ON NHL	OPP S/C	-
RESIDENTIAL	20	COPPER	74.13 NNL KINGSWAY	-	-
263 CENTENNIAL ST	20	COPPER	2.13 SNL HSE	0.45 N OF S/C	-
RESIDENTIAL	20	COPPER	69.49 NNL KINGSWAY	-	-
264 CENTENNIAL ST	20	COPPER	1.49 SNL HSE	OPP S/C	-
RESIDENTIAL	20	COPPER	59.74 NNL KINGSWAY	-	-
265 CENTENNIAL ST	20	COPPER	3.05 SNL HSE	OPP S/C	-
RESIDENTIAL	20	COPPER	59.74 NNL KINGSWAY	-	-
266 CENTENNIAL ST	20	COPPER	1.52 SNL HSE	OPP S/C	-
RESIDENTIAL	20	COPPER	50.29 NNL KINGSWAY	-	-
267 CENTENNIAL ST	20	COPPER	2.13 SNL HSE	0.45 S OF S/C	-
RESIDENTIAL	20	COPPER	81.38 NNL KINGSWAY	-	-
270 CENTENNIAL ST	20	COPPER	4.42 SNL HSE	0.92 N OF S/C	-
RESIDENTIAL	20	COPPER	62.30 NNL KINGSWAY	-	-
271 CENTENNIAL ST	20	COPPER	2.13 SNL HSE	0.61 N OF S/C	-
RESIDENTIAL	20	COPPER	35.66 NNL KINGSWAY	-	-
274 CENTENNIAL ST	20	COPPER	1.52 SNL HSE	OPP S/C	-
RESIDENTIAL	20	COPPER	7.82 OFF BLDG	-	-
275 CENTENNIAL ST	20	COPPER	1.98 SNL HSE	OPP S/C	-
RESIDENTIAL	20	COPPER	14.63 NNL KINGSWAY	-	-
278 CENTENNIAL ST	20	COPPER	2.29 SNL HSE	0.61 S OF S/C	-
RESIDENTIAL	20	COPPER	7.77 NNL KINGSWAY	-	-
281 CENTENNIAL ST	20	COPPER	5.03 SNL HSE	0.45 S OF S/C	-
RESIDENTIAL	20	COPPER	5.79 NNL KINGSWAY	-	-

SEWER JUNCTION INFORMATION FROM SEWER VIDEO INSPECTION S-MA60023428		
DISTANCE FROM S-MH60006393		
17.00	N	150 EAST JN
17.70	N	150 WEST JN
24.40	N	150 WEST CN
25.10	N	150 WEST JN
32.00	N	150 EAST JN
47.20	N	150 EAST JN
47.90	N	150 WEST JN
48.80	N	200 WEST CN
51.80	N	150 EAST JN
52.60	N	150 WEST JN
62.30	N	150 EAST JN
63.10	N	150 WEST JN
66.20	N	150 EAST CN
69.50	N	150 EAST JN
70.70	N	150 WEST JN
78.20	N	150 WEST JN
85.30	N	300 EAST CN
93.50	N	150 WEST JN

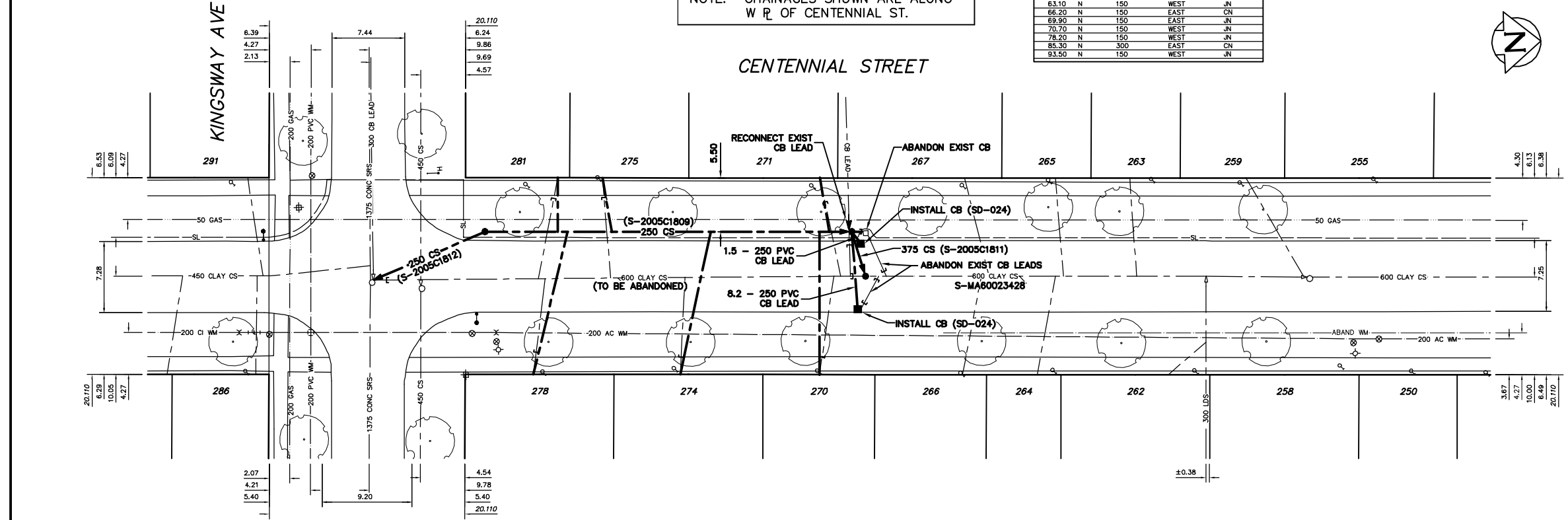
NOTE: CHAINAGES SHOWN ARE ALONG W R OF CENTENNIAL ST.



- CONSTRUCTION NOTES:**
- SEWER TO BE RENEWED BY TRENCHLESS METHODS.
 - CONFIRM THE LOCATION OF ALL SEWER SERVICES WITHIN LIMITS OF RENEWAL.
 - OBTAIN VIDEO INSPECTION OF ALL SEWER SERVICES AND CB LEADS FROM OPEN EXCAVATION TO PROPERTY LINE.
 - SEWER SERVICES TO BE INSTALLED AT A MINIMUM 1.0% SLOPE.
 - BACKFILL IN BOULEVARD TO BE CLASS 5.
 - BACKFILL UNDER PAVEMENT, IN SIDEWALKS, & WITHIN 1.0 m OF PAVEMENT TO BE CLASS 3.

WARNING

METRIC
WHOLE NUMBERS INDICATE MILLIMETRES
DECIMALIZED NUMBERS INDICATE METRES



200 WM	WATERMAIN	200 WM	SL, HYDRO	150 WM	WATERMAIN	150 WM
+	HYDRANT	+	MTS	+	HYDRANT	+
⊙	VALVE	⊙	TRAFFIC SIGNALS	⊙	VALVE	⊙
525 LDS	LAND DRAINAGE SEWER	525 LDS	GAS	300 LDS	LAND DRAINAGE SEWER	300 LDS
375 WWS	WASTEWATER SEWER	375 WWS	SURVEY BAR	250 WWS	WASTEWATER SEWER	250 WWS
○	MANHOLE	○	FENCE	⊕	PROFILE	⊕
□	CATCH BASIN	□	POLE - HYDRO, MTS	⊕	GROUND ABOVE PIPE	⊕
▽	CURB INLET	▽	CURB STOP	⊕	⊕ DITCH (NORTH & WEST)	⊕
⊕	JUNCTIONS	⊕	GUY ANCHOR	⊕	⊕ DITCH (SOUTH & EAST)	⊕
⊕	CULVERT	⊕	LIGHT STANDARD	⊕	⊕ GUTTER (NORTH & WEST)	⊕
⊕	ANODE	⊕	TREE	⊕	⊕ GUTTER (SOUTH & EAST)	⊕
EXISTING	LEGEND-PLAN	PROPOSED	EXISTING	LEGEND-PLAN	PROPOSED	EXISTING
---	LEGEND-PROFILE	---	---	LEGEND-PROFILE	---	---

LOCATION APPROVED UNDERGROUND STRUCTURES

SUPV. U/G STRUCTURES COMMITTEE DATE

NOTE: LOCATION OF UNDERGROUND STRUCTURES AS SHOWN ARE BASED ON THE BEST INFORMATION AVAILABLE BUT NO GUARANTEE IS GIVEN THAT ALL EXISTING UTILITIES ARE SHOWN OR THAT THE GIVEN LOCATIONS ARE EXACT. CONFIRMATION OF EXISTENCE AND EXACT LOCATION OF ALL SERVICES MUST BE OBTAINED FROM THE INDIVIDUAL UTILITIES BEFORE PROCEEDING WITH CONSTRUCTION.

B.M. ELEV. FIELD BOOK #

POSTED TO LISB

DESIGNED BY: NC CHECKED BY: TW

DRAWN BY: C/JH APPROVED BY: KZ

HOR. SCALE: 1:250

VERTICAL: 1:50

NO. REVISIONS DATE BY

DATE: 2005 12 09

CITY OF WINNIPEG WATER AND WASTE ENGINEERING DIVISION

ENGINEER'S SEAL

ORIGINAL SIGNED BY K.R. ZUREK 05/12/07

BID OPPORTUNITY: 683-2005

FILENAME: 05705_05706_Centennial_Full.dwg

PLOT DATE: 2005 12 09

THE CITY OF WINNIPEG WATER AND WASTE DEPARTMENT

2005 SEWER RENEWALS AND SEWER REPAIRS CONTRACT 18

CENTENNIAL STREET

MH AT KINGSWAY AVENUE TO 1ST MH N OF KINGSWAY AVENUE

SHEET 6 OF 10

CITY DRAWING NUMBER: 05705