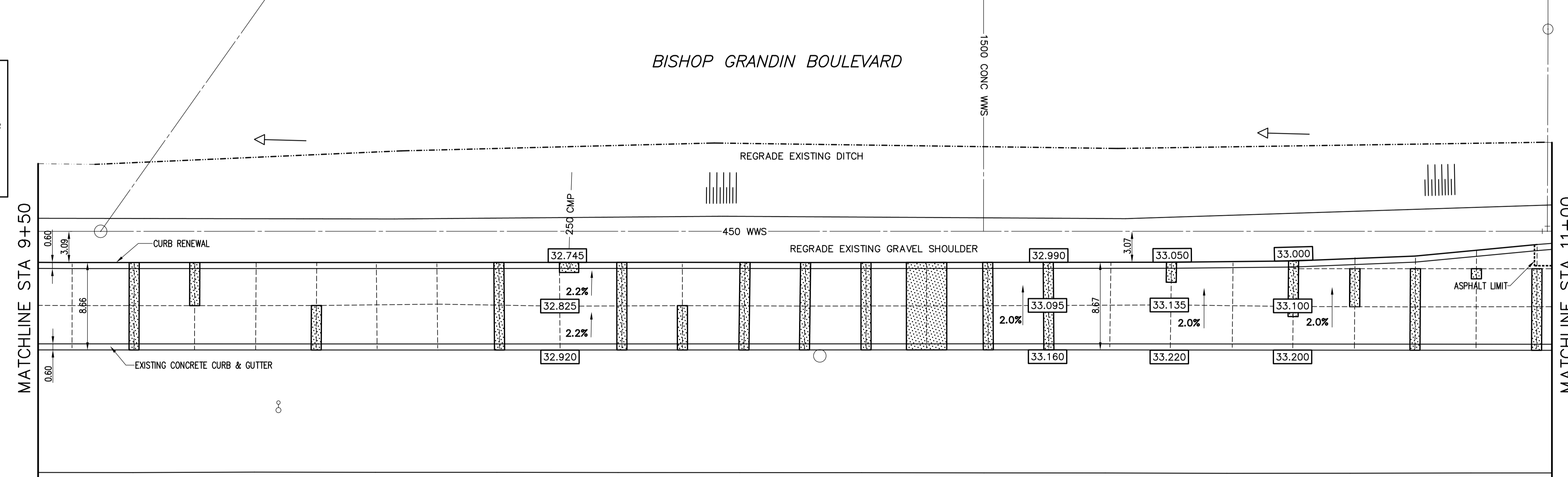


ALL CHAINAGES ARE MEASURED ALONG THE CENTER LINE OF BISHOP GRANDIN BOULEVARD

- CONSTRUCTION NOTES**
- 1) CURB AND GUTTER AND CURB REPLACEMENT AS DIRECTED BY THE CONTRACT ADMINISTRATOR
  - 2) ALL STREET RADIUS CURB UNDER 15M RADIUS SHALL BE REPLACED AS MODIFIED BARRIER CURB OR AS DIRECTED BY THE CONTRACT ADMINISTRATOR
  - 3) EXISTING ASPHALT SURFACE TO BE PLANED WITHIN THE CONSTRUCTION LIMITS AS DIRECTED BY THE CONTRACT ADMINISTRATOR
  - 4) PAVEMENT REPAIRS SHOWN ARE ONLY A REPRESENTATIVE SAMPLE OF THE TENDERED QUANTITIES

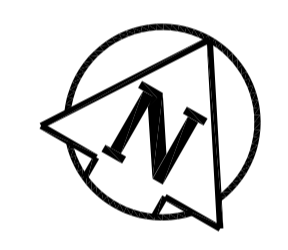


**WARNING**

IF POWER EQUIPMENT OR EXPLOSIVES ARE TO BE USED FOR EXCAVATION ON THIS PROJECT THE CONTRACTOR MUST:

- 1) OBTAIN CLEARANCE FROM THE GAS UTILITY PRIOR TO EXCAVATION.
- 2) TAKE PRECAUTION TO AVOID DAMAGE TO GAS UTILITY INSTALLATIONS.

SEE PROVINCIAL REGULATION 210/72 FOR DETAILS



**METRIC**  
WHOLE NUMBERS INDICATE MILLIMETRES  
DECIMALIZED NUMBERS INDICATE METRES

BID OPP.# 67-2005

EXISTING	LEGEND - PLAN	PROPOSED	EXISTING	LEGEND - PLAN	PROPOSED	EXISTING	LEGEND - PROFILE	PROPOSED
	WATERMAIN			HYDRO SWALE			WATERMAIN	
	HYDRANT VALVE			CONCRETE			SEWER	
	LAND DRAINAGE SEWER			LIMIT OF ASPHALT			SEWER	
	WASTE WATER SEWER			CURB RENEWAL			NORTH GUTTER	
	MANHOLE			GUARD RAIL			NORTH GUTTER Q PROFILE	
	CATCH BASIN			SIGNAL			SOUTH GUTTER	
	CURB INLET			SURVEY BAR			NORTH GUTTER DITCH	
	WOOD POLES			RAMP CURB				
	LAMP STANDARD							
	GAS							

**LOCATION APPROVED**  
UNDERGROUND STRUCTURES

SUPR. U/G STRUCTURES COMMITTEE DATE

NOTE:  
LOCATION OF UNDERGROUND STRUCTURES AS SHOWN ARE BASED ON THE BEST INFORMATION AVAILABLE, BUT NO GUARANTEE IS GIVEN THAT ALL EXISTING UTILITIES ARE SHOWN OR THAT THE GIVEN LOCATIONS ARE EXACT. CONFIRMATION OF EXISTENCE AND EXACT LOCATION OF ALL SERVICES MUST BE OBTAINED FROM THE INDIVIDUAL UTILITIES BEFORE PROCEEDING WITH CONSTRUCTION.

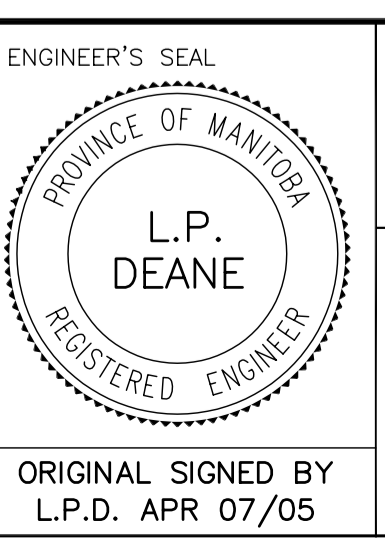
B.M. ELEV.	CBM 62-033	232.164m
NO.	REVISIONS	DATE BY

**ENGINEERING DIVISION**  
**TECHNOLOGY SERVICES BRANCH**  
106 - 1155 PACIFIC AVE

DESIGNED BY B.K.  
CHECKED BY B.K. A.J.P.  
DRAWN BY M.R.J.  
APPROVED BY L.P.D.

HOR. SCALE: 1 : 250  
VERTICAL: 1 : 20

DATE 2005/04/01



**THE CITY OF WINNIPEG**  
PUBLIC WORKS DEPARTMENT

**BISHOP GRANDIN BOULEVARD (WESTBOUND)**  
FROM ST. ANNE'S ROAD TO DAKOTA STREET  
ASPHALT RESURFACING  
FROM STA: 9+50  
TO STA: 11+00

CITY DRAWING NUMBER SE-05-07  
SHEET 7 OF 14  
7