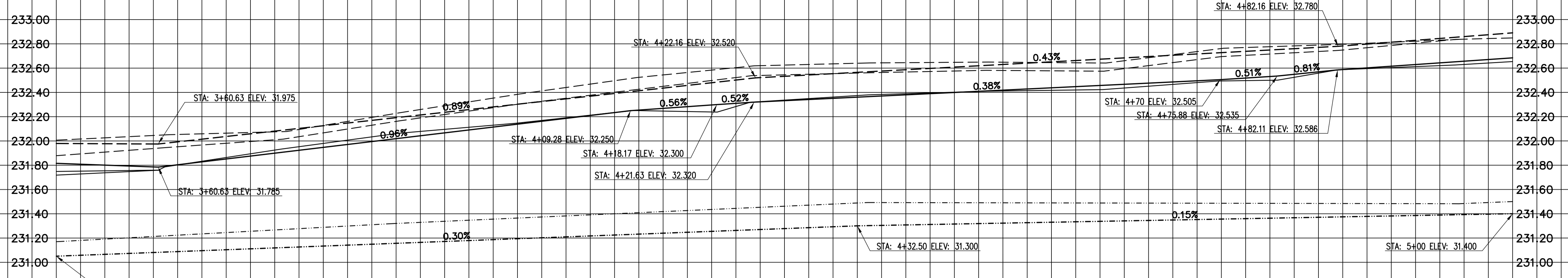


PAVEMENT PROFILES

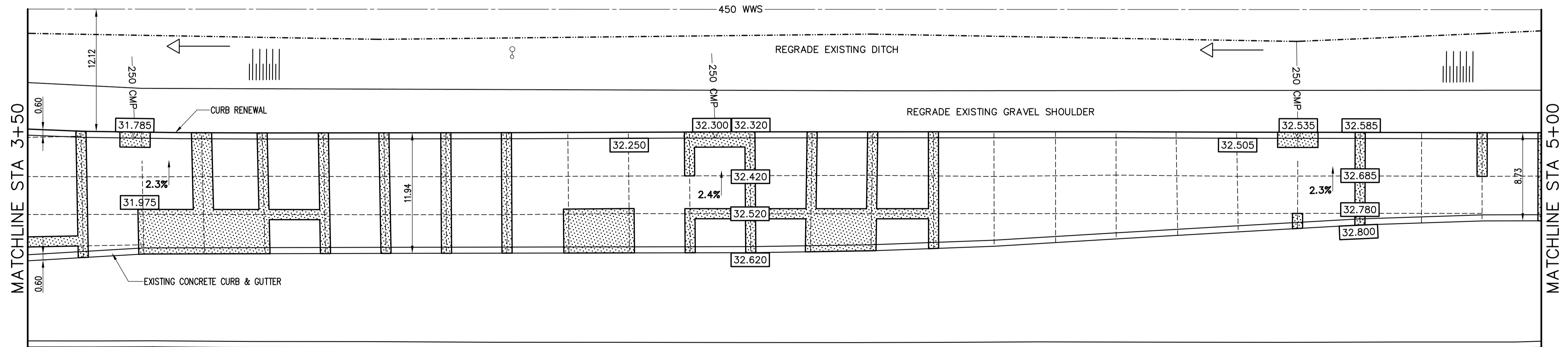
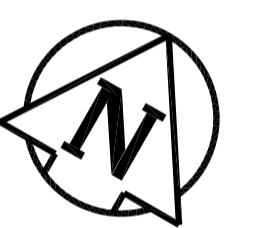


DITCH PROFILE

ALL CHAINAGES ARE MEASURED ALONG THE NORTH GUTTER LINE OF BISHOP GRANDIN BOULEVARD

- CONSTRUCTION NOTES**
- 1) CURB AND GUTTER AND CURB REPLACEMENT AS DIRECTED BY THE CONTRACT ADMINISTRATOR
 - 2) ALL STREET RADIUS CURB UNDER 15M RADIUS SHALL BE REPLACED AS MODIFIED BARRIER CURB OR AS DIRECTED BY THE CONTRACT ADMINISTRATOR
 - 3) EXISTING ASPHALT SURFACE TO BE PLANNED WITHIN THE CONSTRUCTION LIMITS AS DIRECTED BY THE CONTRACT ADMINISTRATOR
 - 4) PAVEMENT REPAIRS SHOWN ARE ONLY A REPRESENTATIVE SAMPLE OF THE TENDERED QUANTITIES

BISHOP GRANDIN BOULEVARD



WARNING

IF POWER EQUIPMENT OR EXPLOSIVES ARE TO BE USED FOR EXCAVATION ON THIS PROJECT THE CONTRACTOR MUST:

- 1) OBTAIN CLEARANCE FROM THE GAS UTILITY PRIOR TO EXCAVATION.
- 2) TAKE PRECAUTION TO AVOID DAMAGE TO GAS UTILITY INSTALLATIONS.

SEE PROVINCIAL REGULATION 210/72 FOR DETAILS

METRIC
WHOLE NUMBERS INDICATE MILLIMETRES
DECIMALIZED NUMBERS INDICATE METRES

BID OPP.# 67-2005

EXISTING	LEGEND - PLAN	PROPOSED	EXISTING	LEGEND - PLAN	PROPOSED	EXISTING	LEGEND - PROFILE	PROPOSED
150 mm WM	WATERMAIN	150 mm WM	HYDRO	150 mm WM	WATERMAIN	300 mm LDS	LAND DRAINAGE SEWER	300 mm LDS
Hydrant Valve	Hydrant Valve	Hydrant Valve	Swale Concrete	Hydrant Valve	Hydrant Valve	250 mm WWS	WASTE WATER SEWER	250 mm WWS
Manhole	Manhole	Manhole	Limit of Asphalt	Manhole	Manhole	300 mm LDS	SEWER	300 mm LDS
Catch Basin	Catch Basin	Catch Basin	Curb Renewal	Curb Renewal	Curb Renewal	North Gutter	North Gutter	North Gutter
Curb Inlet	Curb Inlet	Curb Inlet	Guard Rail	Guard Rail	Guard Rail	South Gutter	South Gutter	South Gutter
Wood Poles	Wood Poles	Wood Poles	Elevations	Elevations	Elevations	North & Ditch	North & Ditch	North & Ditch
Lamp Standard	Lamp Standard	Lamp Standard	Signal	Signal	Signal	Ramp Curb	Ramp Curb	Ramp Curb
Gas	Gas	Gas	Survey Bar	Survey Bar	Survey Bar			

LOCATION APPROVED UNDERGROUND STRUCTURES

SUPR. U/G STRUCTURES DATE COMMITTEE

NOTE:
LOCATION OF UNDERGROUND STRUCTURES AS SHOWN ARE BASED ON THE BEST INFORMATION AVAILABLE. BUT NO GUARANTEE IS GIVEN THAT ALL EXISTING UTILITIES ARE SHOWN OR THAT THE GIVEN LOCATIONS ARE EXACT. CONFIRMATION OF EXISTENCE AND EXACT LOCATION OF ALL SERVICES MUST BE OBTAINED FROM THE INDIVIDUAL UTILITIES BEFORE PROCEEDING WITH CONSTRUCTION.

B.M. ELEV.	GBM 62-033	232.164m
NO.	REVISIONS	DATE BY

ENGINEERING DIVISION
TECHNOLOGY SERVICES BRANCH
106 - 1155 PACIFIC AVE

DESIGNED BY B.K.
CHECKED BY B.K. A.J.P.
DRAWN BY M.R.J.
APPROVED BY L.P.D.

HOR. SCALE: 1 : 250
VERTICAL: 1 : 20

DATE 2005/04/01

ENGINEER'S SEAL
PROVINCE OF MANITOBA
L.P. DEANE
REGISTERED ENGINEER

ORIGINAL SIGNED BY
L.P.D. APR 07/05

THE CITY OF WINNIPEG
PUBLIC WORKS DEPARTMENT

BISHOP GRANDIN BOULEVARD (WESTBOUND)
FROM ST. ANNE'S ROAD TO DAKOTA STREET
ASPHALT RESURFACING
FROM STA: 3+50 TO STA: 5+00

CITY DRAWING NUMBER SE-05-03
SHEET 3 OF 14

3