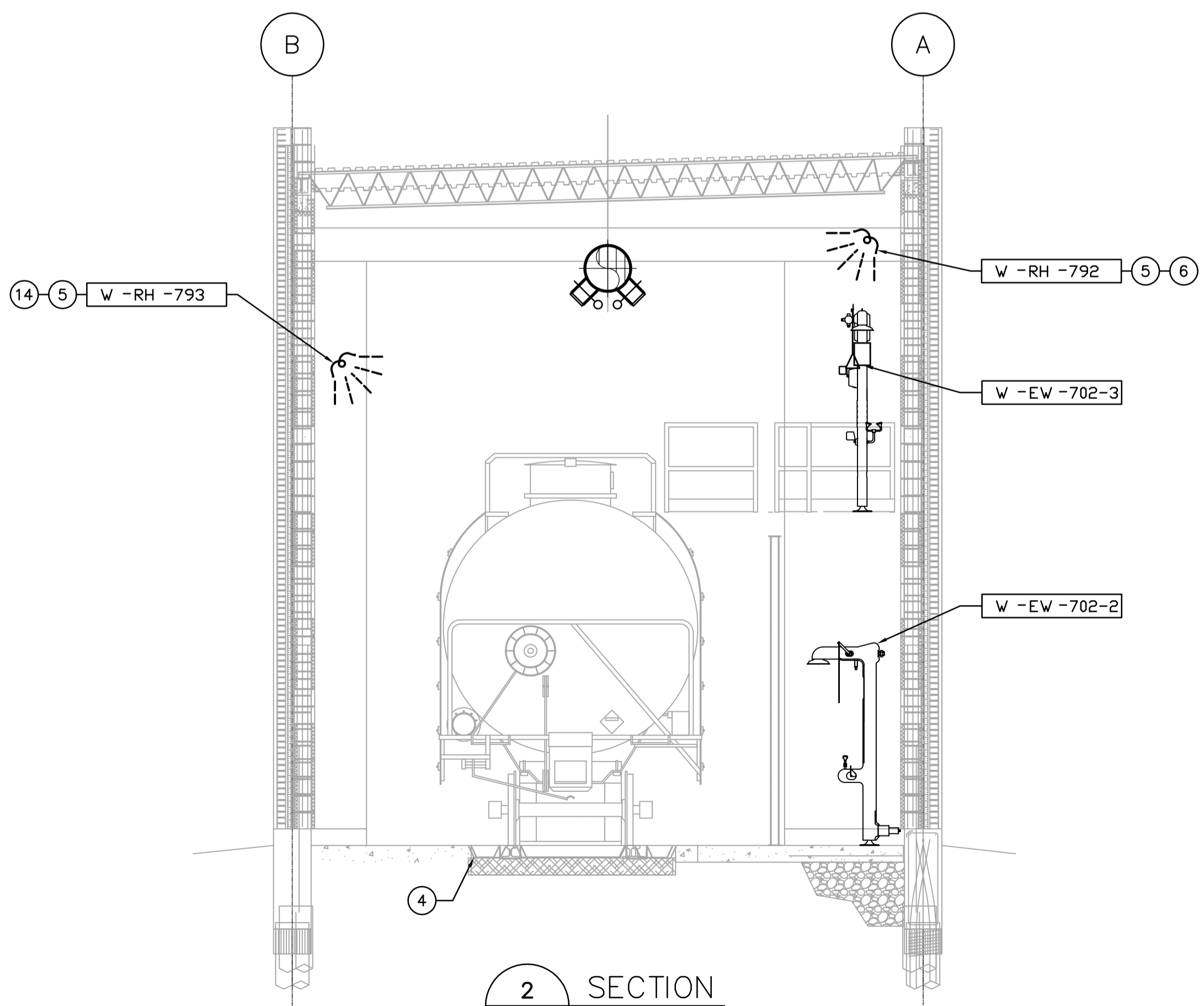
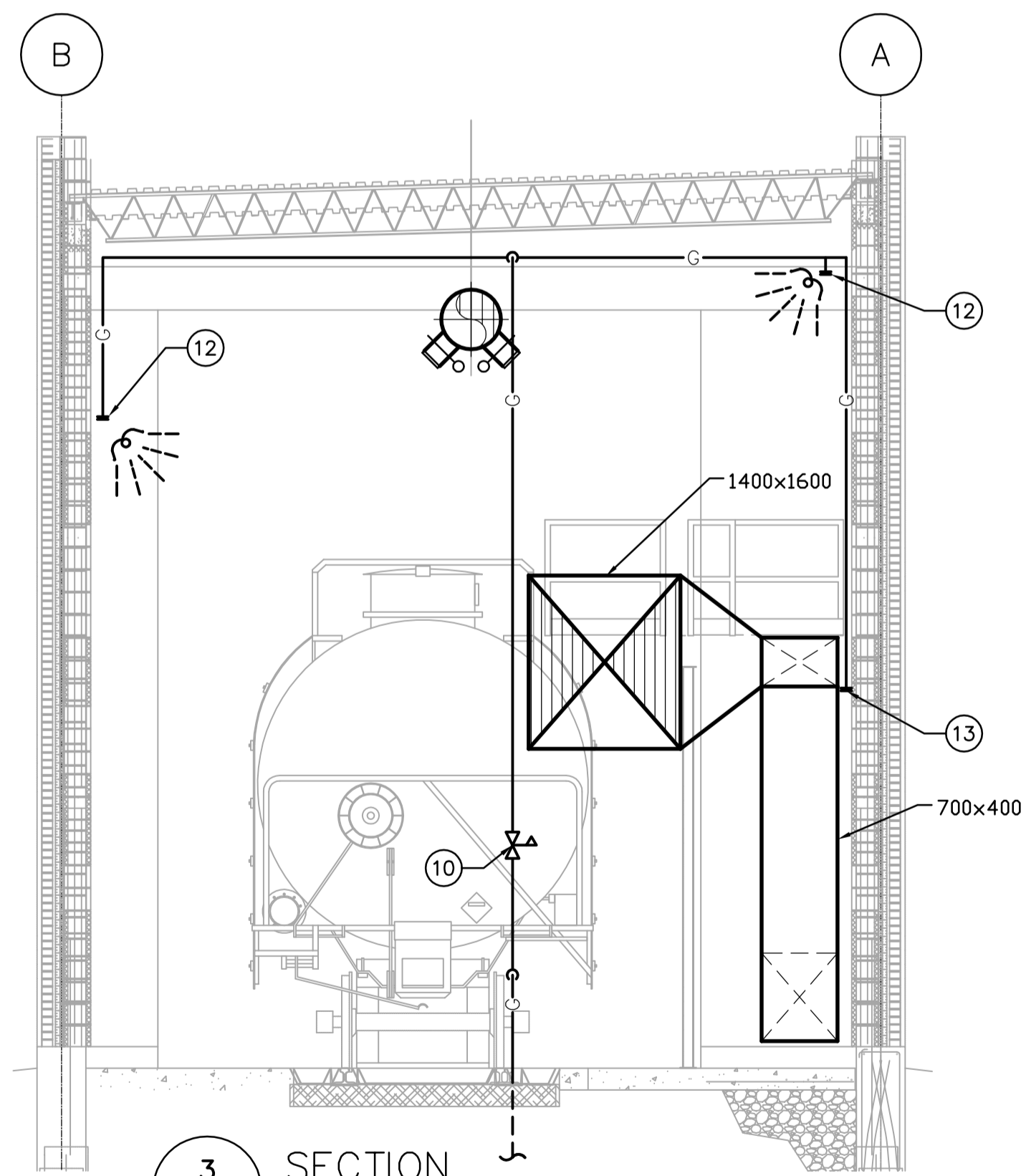


1 SECTION
CM1.02 SCALE 1:50



2 SECTION
CM1.02 SCALE 1:50



3 SECTION
CM1.02 SCALE 1:50

DRAWING NOTES

- ① FACTORY INSTALLED SAFETY INLET SCREEN.
- ② FIRE EXTINGUISHERS SHALL BE INSTALLED AS PER LOCAL CODES AND REGULATIONS.
- ③ ALL DOORS AND MAINTENANCE ACCESS POINTS FOR W-MAU-790 SHALL BE FREE OF OBSTRUCTIONS.
- ④ RAILCAR CONTAINMENT PAN.
- ⑤ RADIANT HEATERS SHALL BE TILTED 45° TOWARDS THE CENTER OF THE ROOM AND SUSPENDED FROM ROOF JOISTS.
- ⑥ MOUNT 2400mm ABOVE PLATFORM.
- ⑦ UTILITY STATION FOR COMPRESSED AIR AND DOMESTIC COLD WATER. SEE DRAWING CM5-03 FOR DETAILS AND STANDARDS.
- ⑧ COMPRESSED AIR HOSE REEL. SEE DRAWING CM5-03 FOR DETAILS AND STANDARDS.
- ⑨ EXTENDED GREASE FITTING WITHIN EASY REACH. GREASE LINE TO BE SECURELY AFFIXED TO WALL.
- ⑩ PRV LOCATED AT 2000 AFF. VENT PIPE THROUGH ROOF c/w PITCH POCKET. REDUCE 35 kPa SUPPLY TO 1.7 kPa.
- ⑪ SUPPLY & INSTALL FLEX JOINT ON FAN. SEE DETAIL ON CM4.02.
- ⑫ 13 GAS LINE TO RADIANT HEATERS.
- ⑬ 25 GAS LINE TO MAKE-UP AIR UNIT.
- ⑭ SUPPORT RADIANT HEATER FROM WALL WHERE OVERHEAD DOOR INTERFERES WITH CEILING SUSPENSION.
- ⑮ HOSE REEL FOR DCW SUPPLY FROM UTILITY STATION.

GENERAL NOTES

- 1. COORDINATE WITH OTHER TRADES SO AS TO PREVENT CONFLICTS.
- 2. PROVIDE HOUSEKEEPING PADS UNDER ALL FLOOR MOUNTED AIR HANDLING EQUIPMENT, PUMPS & TANKS. COORDINATE WITH STRUCTURAL FOR PAD HEIGHT.
- 3. ALL DUCTWORK SHALL BE SUPPORTED AND SUSPENDED AS PER SPECIFICATIONS AND LOCAL CODES. (SEE DETAILS)



B.M. ELEV.	 A Tyco International Ltd. Company		ENGINEER'S SEAL	
			DESIGNED BY: DC	CHECKED BY: AA
	DRAWN BY: DC	APPROVED BY: D. TANIGUCHI	2005/12/02	
	SCALE: 1:50	RELEASED FOR CONSTRUCTION BY: K. MARTENS	CONSULTANT DRAWING NO. CM1.03	
01 611-2005 ADDENDUM 4 06/01/23 DC	DATE	DATE	2005/09/21	
00 ISSUED FOR TENDER 05/12/2 DC	DATE	DATE	05/12/02	
NO. REVISIONS	DATE	DATE	2005/09/21	

 THE CITY OF WINNIPEG WATER AND WASTE DEPARTMENT ENGINEERING DIVISION		CITY FILE NUMBER
NEWPCC CENTRATE NUTRIENT TREATMENT PHOSPHORUS REMOVAL FACILITY CONTRACT No. 1		SHEET OF
MECHANICAL RAILCAR SHELTER SECTIONS		CITY DRAWING NUMBER 1-0101F-A-M0003-001-01-D