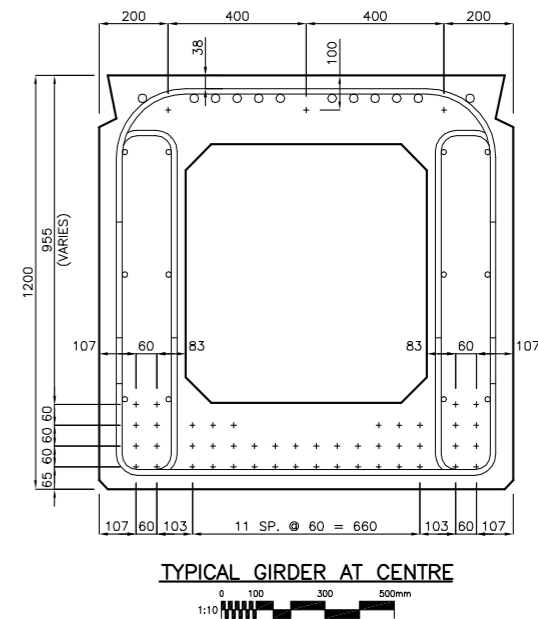
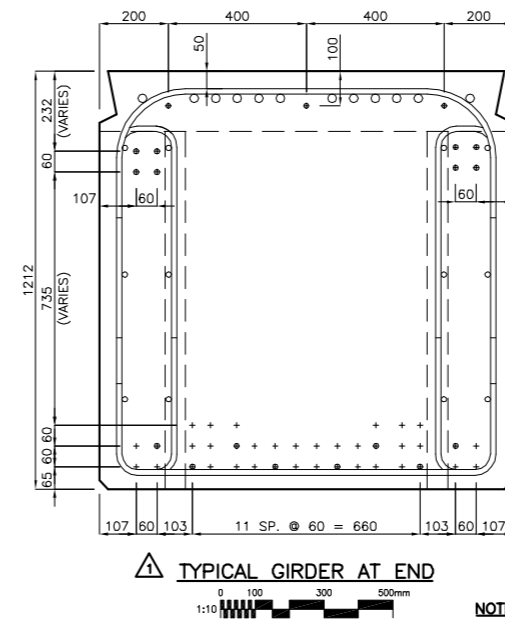
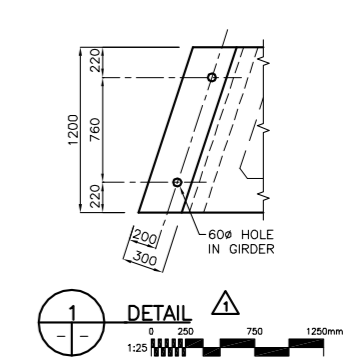
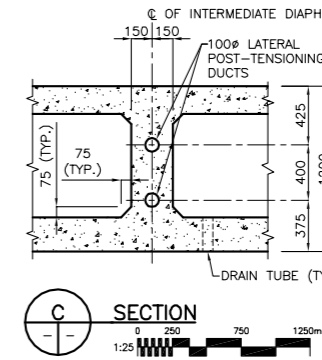
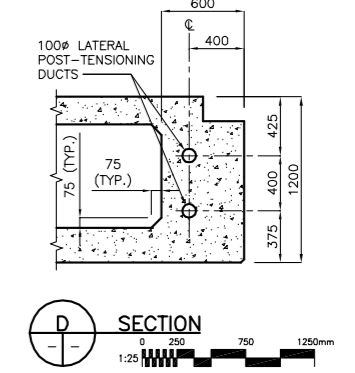
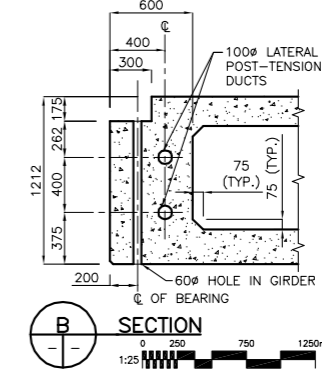
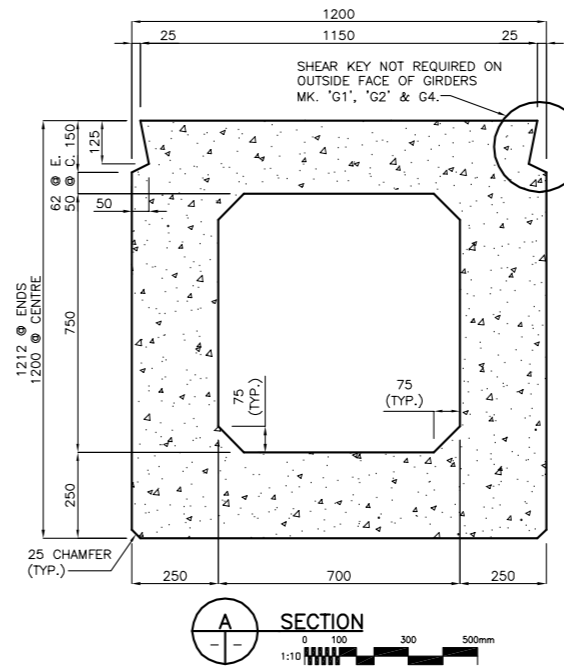


NOTE:
SHOWING VARIABLE DEPTH OF GIRDER TO ELIMINATE CAMBER ON TOP SURFACE AFTER DESTRESSING



- NOTE:**
- + - INDICATES STRAND LOCATION
 - - INDICATES DEBONDED STRAND LOCATION, FOR DEBONDED LENGTH SEE TYPICAL GIRDER ELEVATION
- LATERAL POST TENSION WITH 3-15Ø PRESTRESSING STRANDS PER POST-TENSIONING STRAND. EACH STRAND STRESSED TO 0.7 fpu. FORCE PER STRAND 132KN (FINAL STRESS). PRESSURE GROUT AFTER LATERAL POST TENSIONING IS COMPLETE.
 - CONCRETE FOR BOX GIRDER SHALL BE PLACED MONOLITHICALLY

METRIC
WHOLE NUMBERS INDICATE MILLIMETRES
DECIMALIZED NUMBERS INDICATE METRES



LOCATION APPROVED UNDERGROUND STRUCTURES

SUPV. U/G STRUCTURES COMMITTEE	DATE

NOTE:
LOCATION OF UNDERGROUND STRUCTURES AS SHOWN ARE BASED ON THE BEST INFORMATION AVAILABLE BUT NO GUARANTEE IS GIVEN THAT ALL EXISTING UTILITIES ARE SHOWN OR THAT THE GIVEN LOCATIONS ARE EXACT. CONTRIBUTION OF EXISTENCE AND EXACT LOCATION OF ALL SERVICES MUST BE OBTAINED FROM THE INDIVIDUAL UTILITIES BEFORE PROCEEDING WITH CONSTRUCTION.

B.M. ELEV.			

NO.	REVISIONS	DATE	BY
1	ISSUED FOR ADDENDUM No.2	05.11.15	MJB
0	ISSUED FOR TENDER	05.10.26	MJB

Stantec Consulting Ltd.
905 Waverley Street, Winnipeg, Manitoba
Tel 204-489-5900 Fax 204-453-9012

DESIGNED BY: MJB	CHECKED BY: PD
DRAWN BY: JMB/JGF	APPROVED BY: MJB
AUTHORIZED BY: R. FINGAS, P. ENG. 05.10.26	
BRIDGE PROJECTS ENGINEER	

HOR. SCALE: AS SHOWN
VERTICAL: AS SHOWN
DATE: 05.08.27

ENGINEER'S SEAL

ORIGINAL SEALED BY
M.J. BOISSONNEAULT
P. ENG.
05.10.26

CONSULTANT DRAWING NO.
I13703042-S14

THE CITY OF WINNIPEG
PUBLIC WORKS DEPARTMENT
ENGINEERING DIVISION

Winnipeg

KENASTON UNDERPASS
KENASTON BLVD. / CN RIVERS SUB. MILE 5.18
RAILWAY BRIDGE CONSTRUCTION

PRECAST PRESTRESSED CONCRETE BOX GIRDER
CONCRETE & STRESSING DETAILS

SHEET **16** OF **21**
CAD FILE DRAWING NUMBER
KU-15-664.dwg
CITY DRAWING NUMBER
P-3258-140